



[Manuals.plus](#) /

> [Jafända](#) /

> Jafanda True HEPA 13 Replacement Filter for JF239 & JF268 User Manual

## Jafända JF239 Air Purifiers Replacement Filter

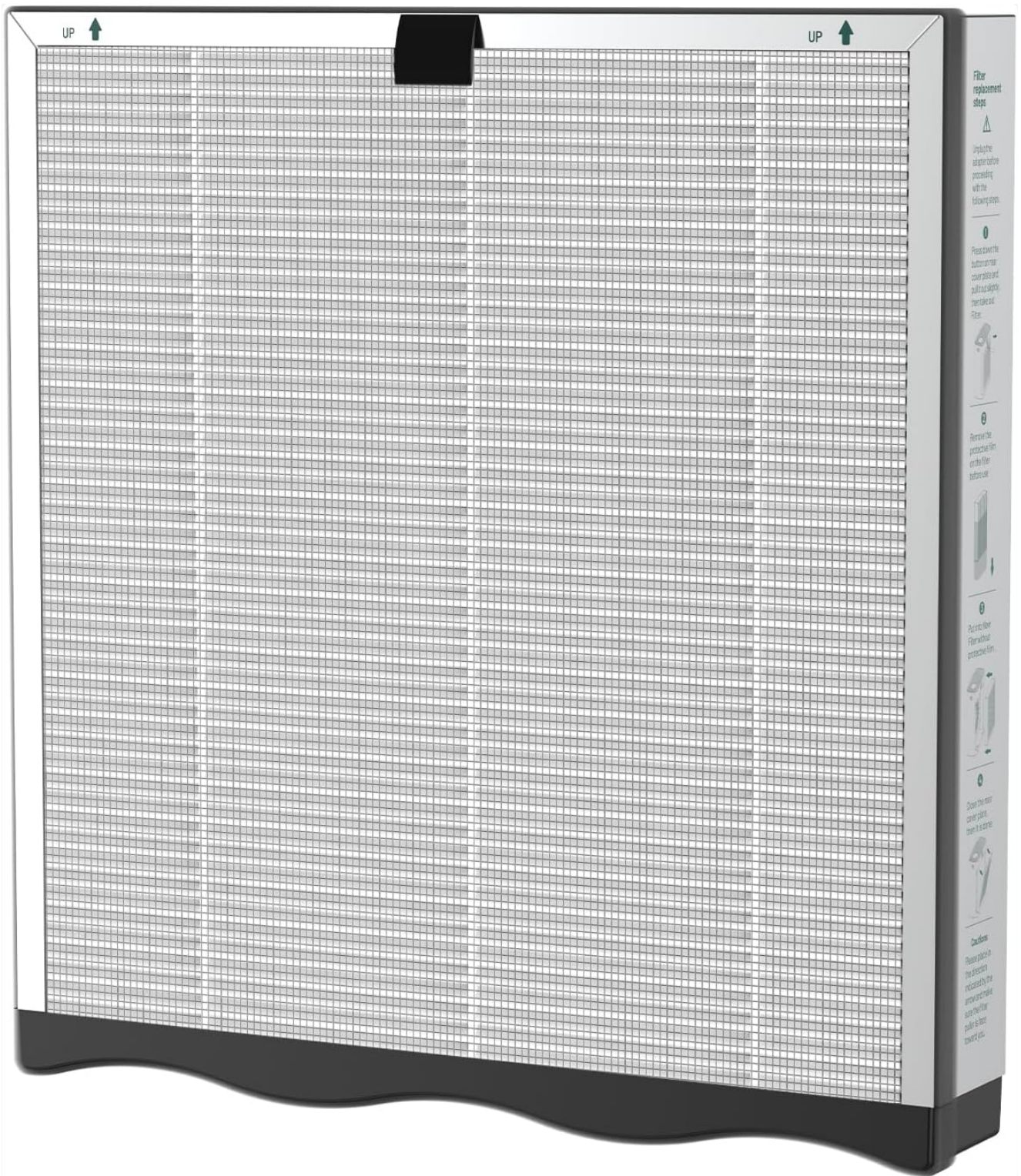
# Jafända True HEPA 13 Replacement Filter User Manual

Model: JF239 Air Purifiers Replacement Filter (Compatible with JF239 & JF268 Air Purifiers)

## INTRODUCTION

This manual provides essential information for the proper installation, operation, and maintenance of your Jafända True HEPA 13 Replacement Filter. Designed for optimal performance, this 3-in-1 filter is compatible with Jafända JF239 and JF268 air purifiers, ensuring cleaner and healthier air in your environment.

## PRODUCT OVERVIEW



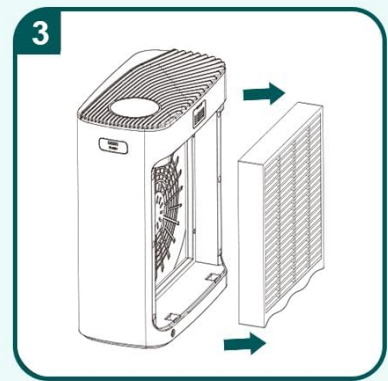
**Figure 1:** Jafānda True HEPA 13 Replacement Filter. This image shows the front view of the filter, highlighting its pleated structure and sturdy frame.



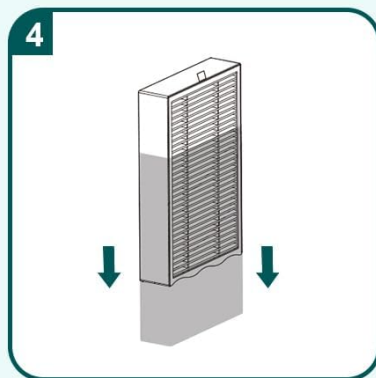
1. Press down down the button on rear cover plate and pull it out slightly, then take out Filter.



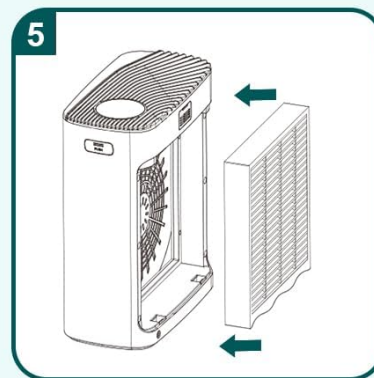
2. Lift the filter cover from the air purifier.



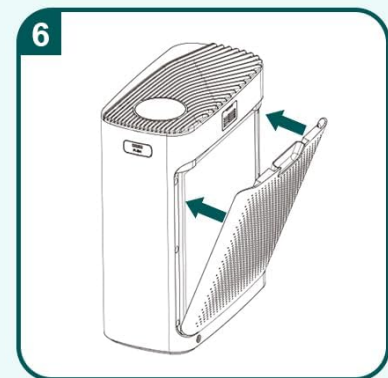
3. Take out the new filters with plastic packaging.



4. Remove the protective film on the filter before use.



5. Put into New Filter without protective film.



6. Close the rear cover plate, then it is done.

**Figure 2:** Filter Dimensions. The filter measures 262mm in height, 247mm in width, and 42mm in depth, ensuring a precise fit for compatible air purifiers.

## Key Features:

- **Genuine Performance & Compatibility:** This official Jafānda replacement filter is specifically designed for JF239 & JF268 air purifiers, ensuring optimal performance and a perfect fit.
- **True HEPA 13 Filtration:** Captures 99.97% of airborne particles as small as 0.3 microns, including dust, pollen, pet dander, and other allergens. It can even filter particles down to 0.015 microns.
- **Powerful Odor Elimination:** Features an activated carbon filter that effectively absorbs common household odors such as cooking smells, pet odors, smoke, and volatile organic compounds (VOCs).
- **Extended Filter Life:** Includes a pre-filter layer that traps larger particles like dust, lint, and pet fur, thereby extending the lifespan and efficiency of the True HEPA filter.
- **3-Stage Filtration System:** Combines a pre-filter, True HEPA 13 filter, and activated carbon filter for comprehensive air purification.

# Powerful 3-Stage Filtration



**Eliminate Dust, Allergens,  
and Pollutants for a Cleaner,  
Healthier Home.**

**Figure 3:** Illustration of the 3-Stage Filtration System. Air passes through the pre-filter, then the True HEPA filter, and finally the activated carbon filter for thorough purification.

## INSTALLATION AND SETUP

Follow these steps to properly install your new Jafanda replacement filter into your JF239 or JF268 air purifier.

1. **Prepare the Air Purifier:** Ensure the air purifier is turned off and unplugged from the power outlet before beginning the filter replacement process.
2. **Open the Filter Compartment:** Press down the button on the rear cover plate of the air purifier and pull it out slightly to release it.
3. **Remove the Filter Cover:** Lift the filter cover from the air purifier to access the old filter.
4. **Remove Old Filter:** Carefully take out the old filter. Dispose of it according to local regulations.
5. **Remove Plastic Packaging: Important:** Remove all plastic packaging from the new filter before installation. Operating the air purifier with the plastic packaging on the filter can damage the unit and prevent proper air purification.
6. **Insert New Filter:** Place the new Jafanda filter into the air purifier, ensuring the "UP" arrows on the filter align

with the corresponding indicators on the air purifier.

7. **Close the Cover:** Close the rear cover plate securely until it clicks into place.

## Engineered for Peak Performance

This genuine Jafanda filter is custom-designed for your JF239 air purifier. Rigorous testing ensures maximum purification, optimal coverage & whisper-quiet operation



**Figure 4:** Step-by-step visual guide for filter replacement. This diagram illustrates the process from opening the unit to inserting the new filter and closing the cover.

Your browser does not support the video tag.

**Video 1:** Jafanda Air Purifier JF239 Overview. This video demonstrates the unboxing, filter installation, and basic operation of the Jafanda JF239 air purifier, providing a visual guide to the filter replacement process.

### OPERATING THE AIR PURIFIER (WITH NEW FILTER)

Once the new filter is installed, you can operate your Jafanda air purifier. The air purifier features smart capabilities and an air quality indicator.

- **Power On:** Plug in the air purifier and press the power button on the control panel.
- **Air Quality Indicator:** The light on the air purifier indicates the current air quality in your room. Green typically signifies good air quality, while other colors may indicate moderate or poor air quality.

- **Smart Connectivity:** The JF239 and JF268 air purifiers can connect to smart home systems like Google Home and Alexa, allowing for remote control and customized settings via a smartphone app.
- **Quiet Operation:** The air purifier is designed for quiet operation, making it suitable for bedrooms and other quiet spaces.

## Breathe Easy with Genuine Air Filters

Safeguard your air purifier's performance and maximize its lifespan



Eliminate Dust, Allergens,  
and Pollutants for a Cleaner,  
Healthier Home.

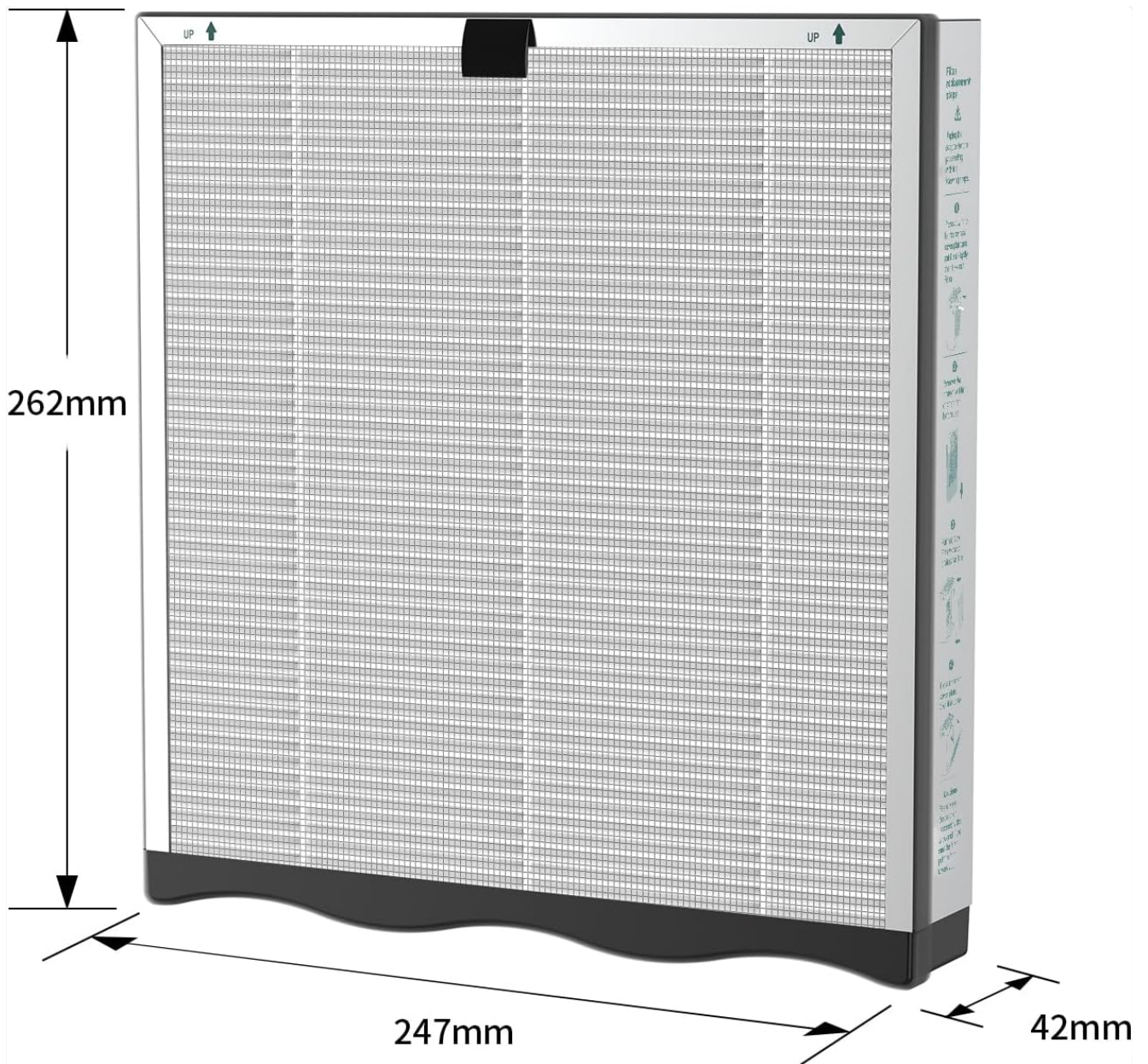


**Figure 5:** Jafānda Air Purifier with a new filter being installed. This image emphasizes the seamless integration of the filter within the air purifier unit.

## MAINTENANCE

Regular maintenance of your filter ensures the longevity and efficiency of your air purifier.

- **Pre-Filter Cleaning:** It is recommended to clean the pre-filter every month. This can be done using a soft brush or a vacuum cleaner to remove accumulated dust and debris.
- **Filter Replacement Reminder:** The JF239 & JF268 Air Purifier Filter Light will turn red when it's time to replace the filter. This typically occurs after 4-6 months of continuous use, depending on air quality and usage.
- **Genuine Filters:** Always use genuine Jafānda replacement filters to maintain optimal performance and avoid potential damage to your air purifier.



**Figure 6:** Cleaning the pre-filter with a vacuum cleaner. Regular cleaning helps maintain purification efficiency and extends the life of the filter.

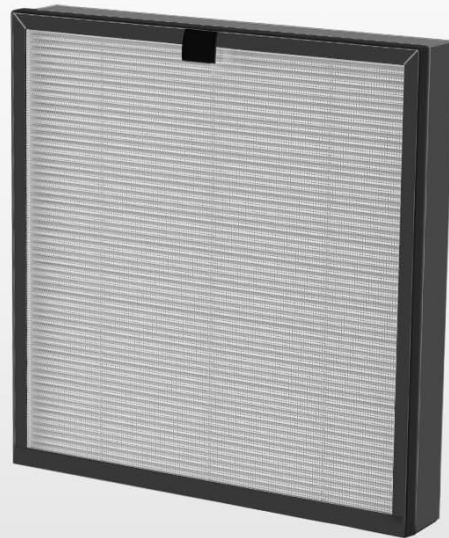
# Trusted Jafanda Quality

Protect yourself and your air purifier from damage caused by unofficial replacement filters



## Jafanda JF239 Filters

Our patented, high-quality air filters are designed to ensure optimal performance for your Jafanda air purifier



## Non-Genuine Alternatives

Third-party filters may not meet our strict quality standards, potentially leading to reduced performance, early replacement, air purifier damage

**Figure 7:** Comparison of Genuine Jafanda Filters and Non-Genuine Alternatives. Using genuine filters ensures optimal performance and protects your air purifier from damage.

## TROUBLESHOOTING

If you encounter issues with your air purifier after filter replacement, consider the following:

- **Air Purifier Not Turning On:**

- Ensure the air purifier is properly plugged into a working power outlet.
- Verify that the filter's plastic packaging has been completely removed. The air purifier will not operate if the filter is still wrapped.
- Check if the filter compartment cover is securely closed.

- **Reduced Airflow or Purification:**

- Check if the pre-filter is clogged and requires cleaning.
- Confirm that the filter is installed correctly with the "UP" arrows facing the correct direction.
- If the filter light is red, it's time for a replacement.

- **Unusual Odors:**

- Ensure the filter is new and has had its plastic packaging removed.
- If the filter is old, it may be saturated with odors and require replacement.

## SPECIFICATIONS

Attribute	Detail
Brand	Jafānda
Model Number	JF239 Air Purifiers Replacement Filter
Compatibility	Jafānda JF239 & JF268 Air Purifiers
Filtration Type	True HEPA 13, Activated Carbon, Pre-Filter (3-in-1)
Particle Retention Size	0.3 Micrometer (captures 99.97%), down to 0.015 microns
Product Dimensions	2 x 4.29 x 8.26 inches (5.08 x 10.89 x 20.98 cm)
Item Weight	1.41 ounces (40 grams)
Color	Black

## WARRANTY AND SUPPORT

For any questions, technical assistance, or warranty inquiries regarding your Jafānda product, please contact Jafānda customer support. Using genuine Jafānda filters is crucial for maintaining your air purifier's warranty and ensuring its long-term performance.

You can often find support information on the official Jafānda website or through the retailer where you purchased the product.