

Tibuta A20

User Manual for Tibuta Android 13 Tablet

MODEL: A20

1. Getting Started

Thank you for choosing the Tibuta Android 13 Tablet. This manual provides essential information to help you set up, operate, and maintain your device.

Package Contents:

- Tibuta Android 13 Tablet (Model A20)
- Protective Case
- USB-C Charging Cable
- Power Adapter



Image: The Tibuta Android 13 Tablet shown with its protective case, highlighting the device's sleek design and the added protection provided by the case.

2. Setup

2.1 Device Layout and Ports:



Image: A detailed diagram illustrating the location of the 5MP front-facing camera, USB-C (2.0) port, 8MP rear camera, 3.5mm stereo jack, volume buttons, power button, built-in microphone, and speaker on the Tibuta tablet.

- **Power Button:** Located on the side, used to power on/off or wake/sleep the device.
- **Volume Buttons:** Adjust audio output.
- **USB-C (2.0) Port:** For charging and data transfer.
- **3.5mm Stereo Jack:** For connecting headphones or external audio devices.
- **Microphone:** For audio input.
- **Speakers:** For audio output.
- **Front Camera (5MP):** For video calls and selfies.
- **Rear Camera (8MP):** For capturing photos and videos.

2.2 Initial Charging:

Before first use, fully charge the tablet using the provided USB-C cable and power adapter. The 5000mAh battery provides approximately 12 hours of general usage.

2.3 Powering On/Off:

- **To Power On:** Press and hold the Power button until the screen lights up.
- **To Power Off:** Press and hold the Power button, then select "Power off" from the options.
- **To Sleep/Wake:** Briefly press the Power button.

2.4 Initial Setup Wizard:

Upon first power-on, follow the on-screen instructions to complete the initial setup, including selecting your language, connecting to a Wi-Fi network, and setting up your Google account.

2.5 Inserting a TF Card:

To expand storage, locate the TF card slot (usually covered by a small flap on the side) and gently insert a TF card (up to 128GB) until it clicks into place. Ensure the tablet is powered off before inserting or removing the card.

3. Operating Instructions

3.1 Basic Navigation:

The tablet features a sensitive 10.1-inch IPS HD display (1280x800 pixels). Navigate by tapping, swiping, pinching, and spreading gestures.

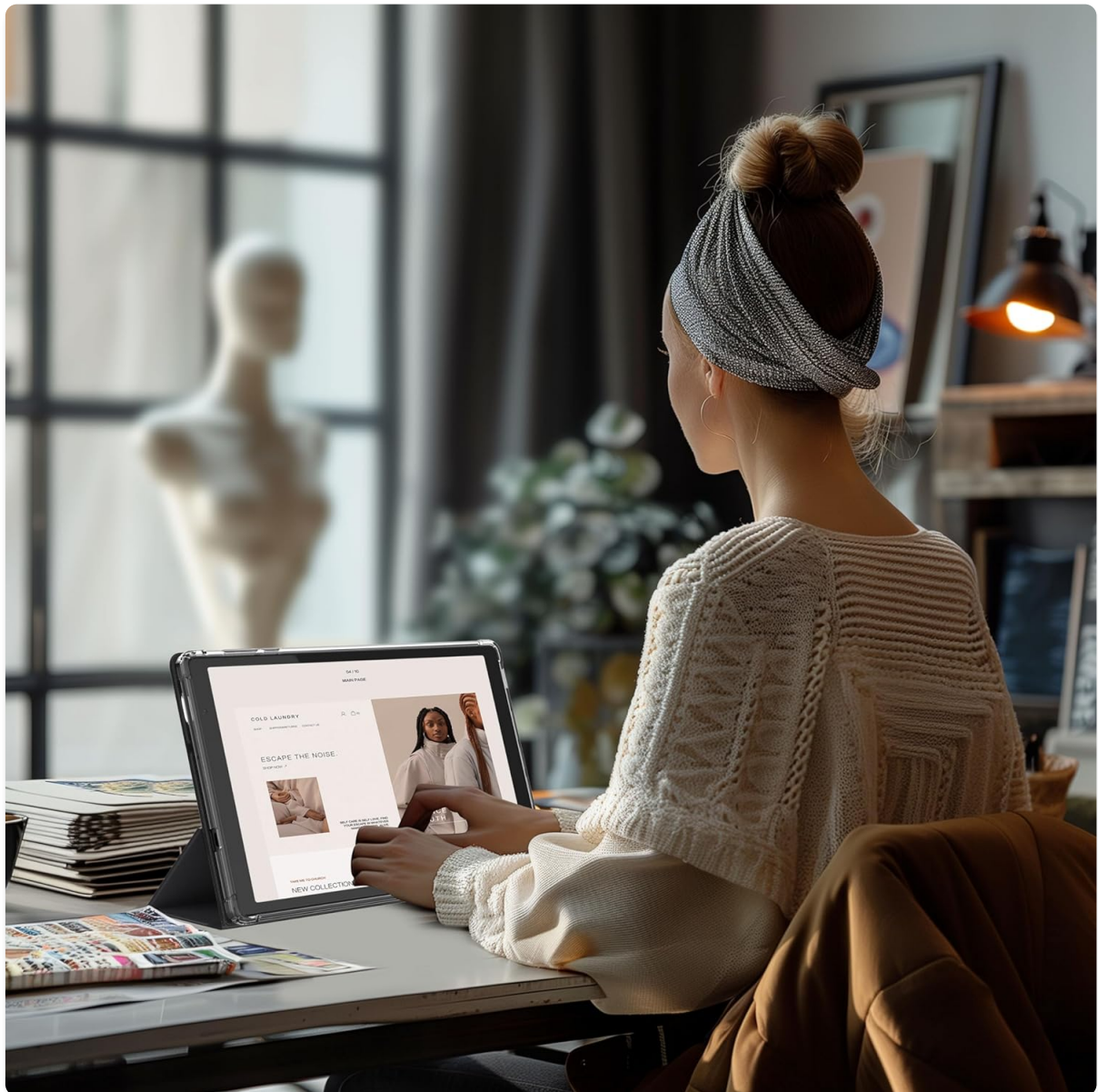


Image: A user interacting with the Tibuta tablet, demonstrating its use for web browsing and general tasks, highlighting the clear display and responsive touch screen.

3.2 Connectivity:

- **Wi-Fi:** Connect to 2.4G Wi-Fi networks via Settings > Network & internet > Wi-Fi.
- **Bluetooth:** Pair with Bluetooth 4.2 devices (e.g., headphones, keyboards) via Settings > Connected devices > Bluetooth.

3.3 Camera Usage:

The tablet is equipped with a 5MP front camera and an 8MP rear camera. Open the Camera app to capture photos and videos.



Image: The tablet screen displaying a vibrant image, illustrating the quality of photos captured by its 5MP front and 8MP rear dual cameras.

3.4 Audio:

Enjoy audio through the built-in high-fidelity speakers or connect headphones via the 3.5mm stereo jack. The integrated microphone allows for voice recording and video calls.

3.5 Applications:

The tablet runs on the GMS certified Android 11 system and comes with Google Play pre-installed, allowing access to a wide range of applications including Facebook, Twitter, YouTube, TikTok, Line, and Instagram. The Quad-core CPU and 2GB RAM ensure smooth multitasking.

4. Maintenance

4.1 Cleaning:

Use a soft, lint-free cloth to clean the screen and body of the tablet. Avoid using abrasive cleaners or solvents.

4.2 Battery Care:

To prolong battery life, avoid extreme temperatures and do not allow the battery to fully discharge frequently. The 5000mAh battery can last up to 10 days on standby.

Large Capacity Battery



8 hours



9 hours



10 hours

Image: The tablet screen displaying content, with icons indicating approximate battery life for video playback (8 hours), reading (9 hours), and music listening (10 hours).

4.3 Software Updates:

Regularly check for system updates via Settings > System > System update to ensure optimal performance and security.

4.4 Storage Management:

The tablet has 32GB of internal storage, expandable up to 128GB with a TF card. Regularly manage your files and uninstall unused applications to free up space and maintain performance.

5. Troubleshooting

Common Issues and Solutions:

- **Tablet is Slow or Unresponsive:**

- Close unused applications.
- Clear cache for frequently used apps.
- Restart the tablet.
- Ensure sufficient storage space is available.

- **Wi-Fi Connectivity Issues:**

- Ensure Wi-Fi is enabled in settings.
- Forget the network and reconnect.
- Restart your Wi-Fi router.
- Move closer to the Wi-Fi router.

- **Tablet Not Charging or Not Holding Charge:**

- Ensure the charging cable and adapter are securely connected and undamaged.
- Try a different power outlet.
- If the issue persists, contact customer support.

- **Apps Crashing or Not Loading:**

- Clear the app's cache and data (Settings > Apps > [App Name] > Storage > Clear cache/Clear data).
- Uninstall and reinstall the app.
- Ensure the tablet's software is up to date.

If you encounter issues not covered here, or if troubleshooting steps do not resolve the problem, please refer to the Warranty and Support section.

6. Specifications

Excellent Performance



Android 13.0



Quad-Core



5000mAh



1280*800IPS



4(2+2)GB



128GB Expand



2.4G WIFI



5MP+8MP

Image: Visual representation of the tablet's key performance features, including Android 13.0, Quad-Core processor, 5000mAh battery, 1280*800 IPS display, 4(2+2)GB RAM, 128GB expandable storage, 2.4G WiFi, and 5MP+8MP cameras.

Feature	Description
Brand	Tibuta
Model	A20
Operating System	Android 11 (GMS Certified)
Processor	Quad-core CPU
RAM	2GB
Internal Storage	32GB

Expandable Storage	Up to 128GB (TF Card)
Screen Size	10.1 Inches
Screen Resolution	1280 x 800 pixels (IPS HD Display)
Front Camera	5MP
Rear Camera	8MP
Battery Capacity	5000mAh
Average Battery Life	12 Hours (general usage)
Connectivity	Wi-Fi (2.4G), Bluetooth 4.2
Ports	USB-C (2.0), 3.5mm Stereo Jack, MIC Port
Dimensions	24.3 x 15.3 x 0.8 cm
Weight	1.19 kg
Included Accessories	Protective Case, USB-C Cable, Power Adapter

7. Warranty and Support

For warranty information, please refer to the documentation included with your purchase. If you require technical assistance or have questions about your Tibuta tablet, please contact the seller or manufacturer's customer support through the platform where the product was purchased.

Please retain your proof of purchase for warranty claims.