



[Manuals.plus](#) /

> [PawHut](#) /

> PawHut 65-inch Wooden Pet Hutch (Model D51-353V01GY) Instruction Manual

PawHut D51-353V01GY

PawHut 65-inch Wooden Pet Hutch Instruction Manual

Model: D51-353V01GY

1. INTRODUCTION

This manual provides instructions for the assembly, operation, and maintenance of your PawHut 65-inch Wooden Pet Hutch, Model D51-353V01GY. This enclosure is designed to provide a safe and comfortable living space for small animals such as rabbits, guinea pigs, chickens, and ducks. Please read these instructions carefully before assembly and use to ensure proper function and safety.

2. SAFETY INFORMATION

- Ensure all parts are securely fastened during assembly.
- Regularly inspect the hutch for any damage or loose components that could compromise pet safety.
- Place the hutch on a level, stable surface.
- This product is intended for outdoor use. Provide adequate shelter from extreme weather conditions.
- Keep small children away from the hutch during assembly and ensure adult supervision when children interact with pets in the hutch.
- Do not overload the hutch with more animals than recommended (1-3 rabbits, depending on size).

3. SETUP AND ASSEMBLY

Assembly of the PawHut pet hutch is required. Follow the included assembly guide for detailed step-by-step instructions. Key components include the main housing, an attached run area, a side storage box, and wheels for mobility.

3.1 Key Features Overview



MULTIPLE ENTRANCES

Easily access to your lovely pets

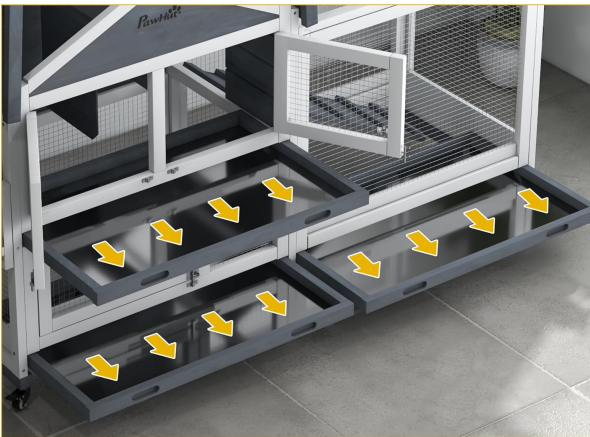


Spacious Living Area: This diagram highlights the 3.34 sq.ft upper living area and 6.56 sq.ft lower run area, indicating ample space for 1-3 rabbits.

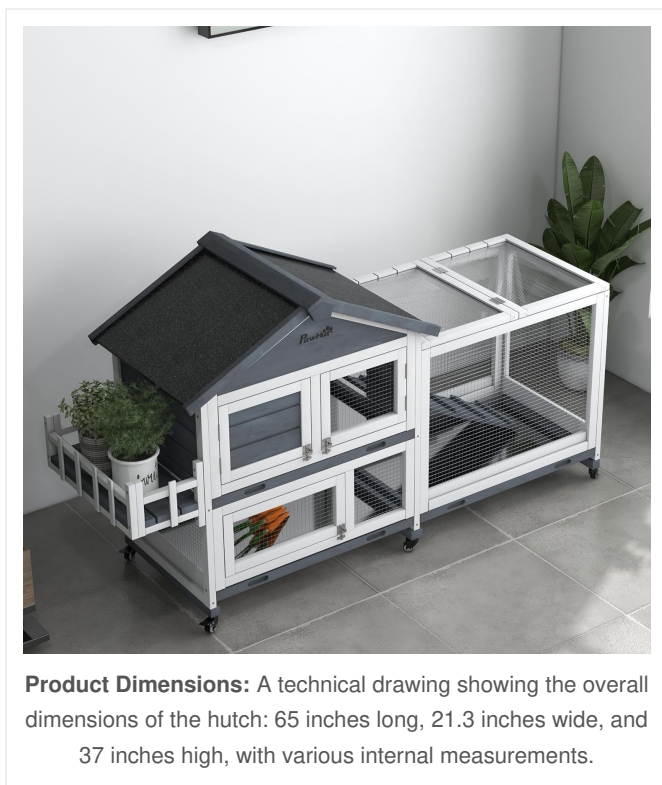
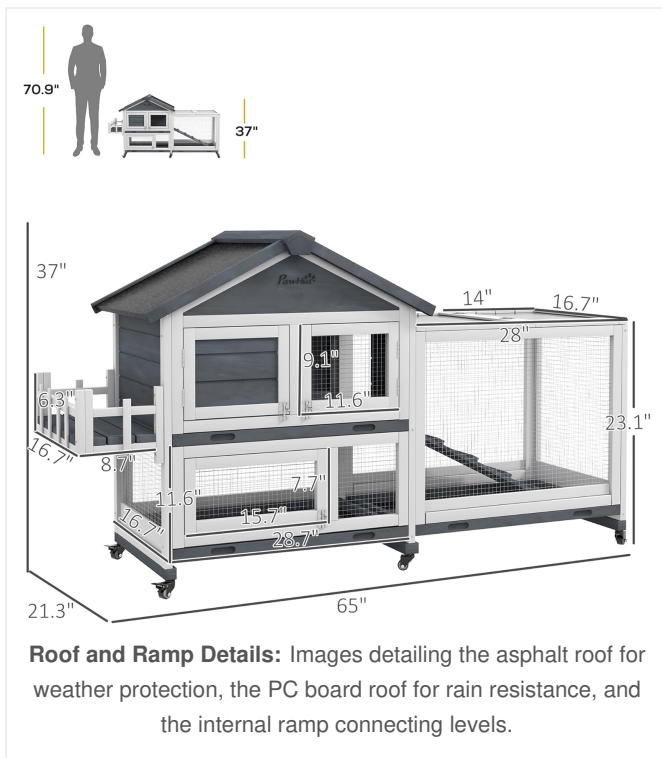


SLIDE-OUT TRAY

Make cleaning work so much easier



Multiple Entrances: An exploded view diagram illustrating the openable roofs, lockable doors, and slide-out trays for easy access and cleaning.



4. OPERATING INSTRUCTIONS

4.1 Accessing the Hutch

The hutch features multiple access points for interacting with your pets and for cleaning. The asphalt roof on the main house and the PC board roof on the run area can be opened. Additionally, there are four large doors on the front of the hutch, equipped with lockable latches to secure your pets inside.

4.2 Mobility

The hutch is equipped with six wheels, two of which have brakes. To move the hutch, ensure the brakes are disengaged. Once the hutch is in the desired position, engage the brakes to secure it in place.

4.3 Side Storage Space

A side storage box is integrated into the design, providing a convenient area to store pet supplies or to place small potted plants.

4.4 Internal Ramp

An internal ramp connects the upper living area to the lower run area, allowing pets to move freely between levels.

5. MAINTENANCE

Regular cleaning and maintenance will extend the life of your pet hutch and ensure a healthy environment for your animals.

5.1 Cleaning

- **Slide-Out Trays:** The hutch features three built-in slide-out trays located under the nesting box and run area. These trays can be easily removed for quick and efficient cleaning of waste. Clean these trays daily or as needed.
- **General Cleaning:** Wipe down all surfaces (fir wood, PC board, steel wires) with a damp cloth and a mild, pet-safe cleaning solution. Rinse thoroughly and allow to air dry completely before returning pets to the hutch.
- **Roof Care:** The asphalt and PC board roofs are designed for weather resistance. Periodically check for debris and clean as necessary to maintain their protective qualities.

MORE DETAILS



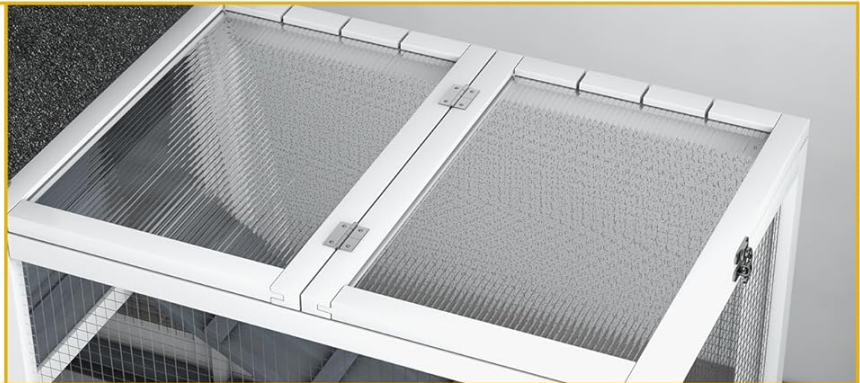
ASPHALT ROOF

Keep home
dry and warm



PC BOARD ROOF

Resist the rain



A RAMP

Easy up & downstairs



Slide-Out Tray System: A close-up view showing the three slide-out trays being removed from the hutch for convenient cleaning.

5.2 Storage

When not in use, or during periods of extreme weather, it is recommended to keep the hutch in a dry place to preserve the wood and other materials.

6. TROUBLESHOOTING

This section addresses common issues you might encounter with your pet hutch.

- **Difficulty Moving Hutch:** Ensure the brakes on the wheels are disengaged. Check for any obstructions under the wheels.
- **Doors Not Latching Securely:** Inspect the latches and hinges for any misalignment or damage. Adjust if necessary, or contact support if parts are broken.
- **Water Leakage:** Verify that the asphalt and PC board roofs are properly installed and free of damage. Ensure the hutch is placed on a level surface to prevent water pooling.
- **Unusual Odor:** New wooden products may have a slight odor. Ensure proper ventilation and allow the hutch to air out for a few days before introducing pets. Regular cleaning will also help prevent odors.

7. SPECIFICATIONS

| | |
|---------------------------------------|---|
| Brand | PawHut |
| Model Number | D51-353V01GY |
| Overall Dimensions (L x W x H) | 65.2" x 21.3" x 37" |
| Item Weight | 38.6 Pounds |
| Material | Fir Wood, PC Board, Steel Wires |
| Special Features | Lockable, Multi-Level, Weather Resistant |
| Included Components | Ramp, Removable Trays |
| Target Audience | Small Animals (Rabbits, Guinea Pigs, Chickens, Ducks) |
| Specific Uses | Outdoor |

8. WARRANTY

This PawHut pet hutch comes with a 1-year warranty against manufacturer defects. Please retain your proof of purchase for warranty claims. The warranty covers defects in materials and workmanship under normal use. It does not cover damage resulting from misuse, accidents, or unauthorized modifications.

9. SUPPORT

For further assistance, missing parts, or warranty inquiries, please contact the manufacturer, Aosom LLC, or visit the official PawHut brand store. Contact information can typically be found on the packaging or the retailer's website where the product was purchased.

You can also visit the [PawHut Store on Amazon](#) for more information and products.

