

manuals.plus /

› [Tibuta](#) /

› [Tibuta 10-inch Android Tablet User Manual](#)

Tibuta A20

Tibuta 10-inch Android Tablet User Manual

Model: A20

INTRODUCTION

Thank you for choosing the Tibuta 10-inch Android Tablet. This manual provides essential information for setting up, operating, and maintaining your device. Designed for versatility, this tablet is ideal for entertainment, education, and daily tasks, featuring a responsive IPS display, dual cameras, and robust connectivity options.



Image: The Tibuta 10-inch Android Tablet shown with its protective case, highlighting its sleek design and display.

PACKAGE CONTENTS

Please check the package contents upon unboxing:

- Tibuta 10-inch Android Tablet (Model A20)
- Protective Case
- Charger
- User Manual (this document)

SETUP

1. Initial Charging

Before first use, fully charge your tablet. Connect the provided charger to the USB-C port on the tablet and plug it into a power outlet. The battery indicator on the screen will show charging progress.

2. Power On/Off

- **To Power On:** Press and hold the Power button (located on the side) until the Tibuta logo appears.
- **To Power Off:** Press and hold the Power button until the power options menu appears, then select "Power off".

5 MP front-facing camera

Usb-c (2 . 0) port

8MP rear camera

3 . 5mm
stereo jack

Volume buttons

Power button

Built-in microphone

speaker



Image: A detailed diagram illustrating the location of the USB-C port, 3.5mm stereo jack, volume buttons, power button, built-in microphone, and speaker on the tablet.

3. Initial Setup Wizard

Upon first power-on, the tablet will guide you through an initial setup wizard. Follow the on-screen prompts to:

- Select your language.
- Connect to a Wi-Fi network.
- Sign in with your Google account or create a new one.
- Set up screen lock (PIN, pattern, or password).
- Review and accept terms and conditions.

OPERATING YOUR TABLET

1. Navigating the Android Interface

Your tablet runs on Android 11. Common gestures include:

- **Tap:** Select an item or open an app.
- **Long Press:** Access contextual menus or move icons.
- **Swipe:** Scroll through pages, menus, or switch between home screens.
- **Pinch-to-Zoom:** Zoom in or out on images and web pages.

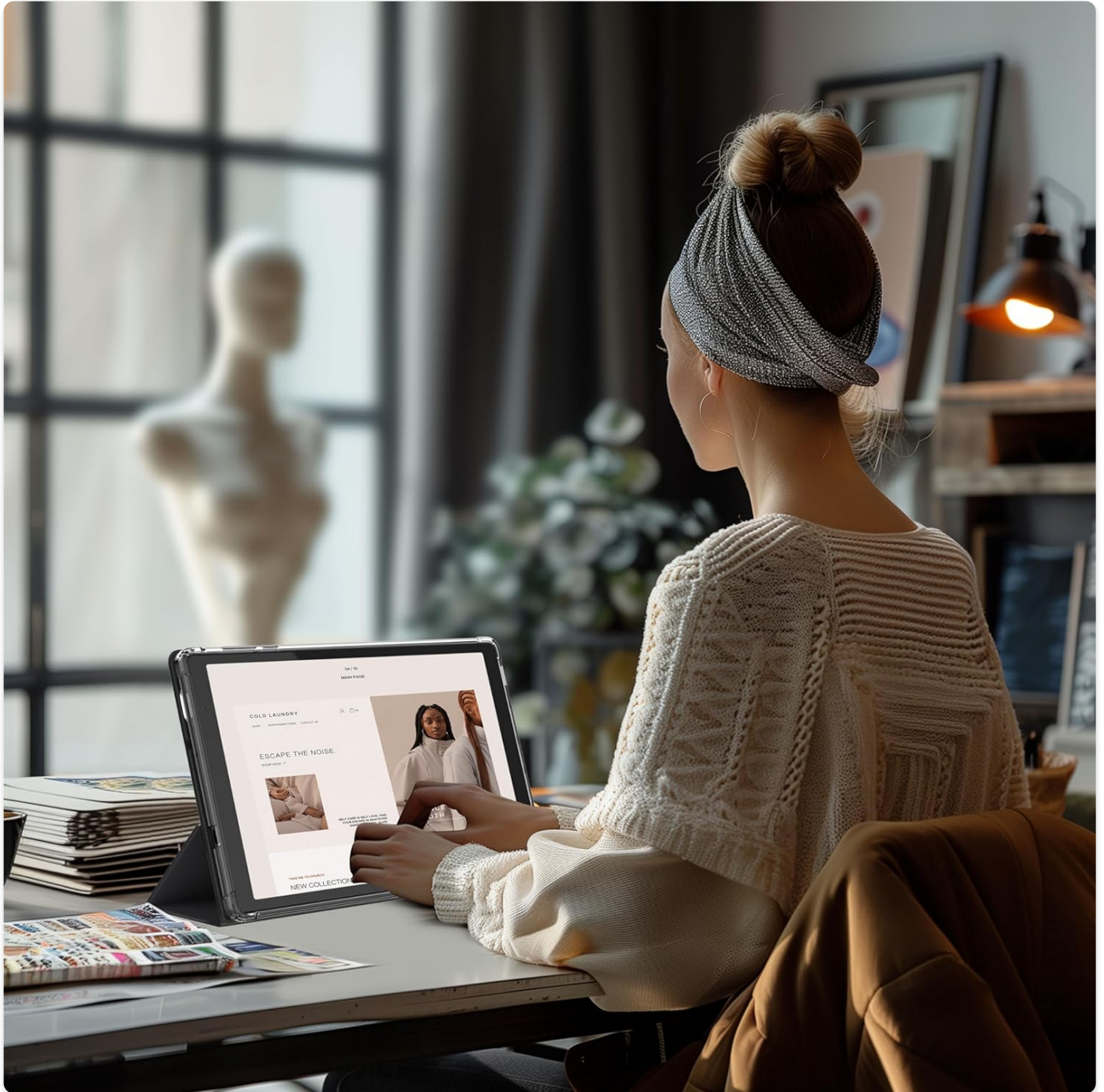


Image: A user interacting with the Tibuta tablet, demonstrating its use for browsing or productivity tasks.

2. Connecting to Wi-Fi

1. Go to **Settings > Network & internet > Wi-Fi**.

2. Toggle Wi-Fi **On**.
3. Select your desired network from the list.
4. Enter the password if prompted, then tap **Connect**.

3. Using Cameras

Your tablet features a 5MP front camera and an 8MP rear camera. Open the Camera app to capture photos and videos.



Image: The tablet screen showing a vibrant image, illustrating the quality of photos captured by its 5MP front and 8MP rear cameras.

4. Storage and Memory

The tablet comes with 32GB of internal storage and 4GB (2+2GB) RAM. You can expand storage up to 128GB using a microSD card (not included).

Save All Your Precious Memories

4(2+2)GB RAM+**32GB** ROM (expandable up to **128GB**)



Image: Visual representation of the tablet's 4GB (2+2GB) RAM and 32GB ROM, with an indication of expandability up to 128GB via TF card.

5. Battery Life

The 5000mAh battery provides approximately 8 hours of general usage and up to 10 days of standby time. Battery life varies based on usage patterns and settings.

Large Capacity Battery



8 hours



9 hours



10 hours

Image: Icons indicating battery life for different activities: 8 hours for video playback, 9 hours for reading, and 10 hours for music playback.

6. Multimedia and Applications

The tablet supports various video decoding formats and comes with Google Play pre-installed, allowing access to a wide range of applications like Facebook, YouTube, TikTok, and more.

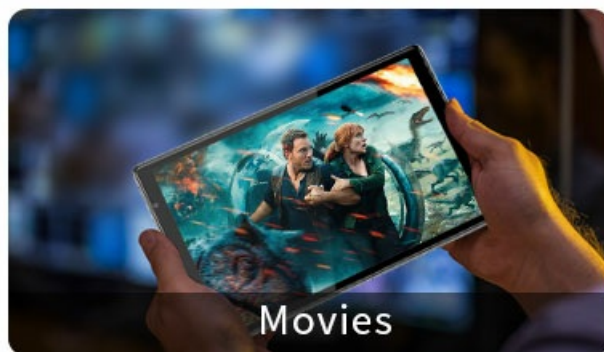
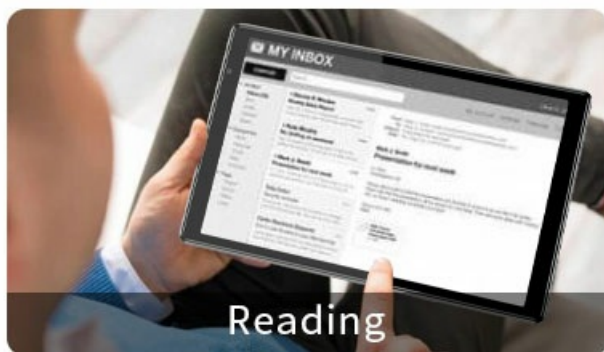


Image: A collage of images demonstrating the tablet's versatility for studying, online shopping, video consumption, reading, and watching movies.

MAINTENANCE

- **Cleaning:** Use a soft, lint-free cloth to clean the screen and body. Avoid abrasive cleaners or solvents.
- **Software Updates:** Regularly check for system updates in **Settings > System > System update** to ensure optimal performance and security.
- **Battery Care:** Avoid extreme temperatures. Do not let the battery fully drain frequently. For long-term storage, charge the tablet to about 50%.
- **Storage Management:** Periodically clear unnecessary files and apps to free up storage space and maintain performance.

TROUBLESHOOTING

Problem	Solution
Tablet won't turn on.	Ensure the tablet is charged. Connect the charger and wait a few minutes before attempting to power on again. If it still doesn't turn on, try holding the power button for 10-15 seconds.
Wi-Fi connection issues.	Restart your Wi-Fi router. On the tablet, go to Wi-Fi settings, forget the network, and then reconnect. Ensure you are within range of the Wi-Fi signal.

Problem	Solution
Apps are slow or crashing.	Close background apps. Clear app cache (Settings > Apps > [App Name] > Storage > Clear cache). Restart the tablet. Ensure sufficient free storage space.
Screen is unresponsive.	Perform a forced restart by holding the power button for about 10 seconds until the tablet reboots.
Battery drains quickly.	Reduce screen brightness. Turn off Wi-Fi/Bluetooth when not in use. Close unnecessary background apps. Limit usage of power-intensive applications.

SPECIFICATIONS

Feature	Detail
Model	A20
Operating System	Android 11 (GMS Certified)
Processor	Quad-Core Allwinner
Display	10.1-inch IPS HD (1280x800 pixels)
RAM	4GB (2GB + 2GB virtual)
Internal Storage	32GB ROM
Expandable Storage	Supports TF card up to 128GB
Front Camera	5.0MP
Rear Camera	8.0MP
Battery	5000mAh
Connectivity	Wi-Fi (802.11 b/g/n/ac, 2.4G), Bluetooth 4.2
Ports	USB-C (2.0), 3.5mm Audio Jack
Dimensions (L x W x H)	24.3 x 15.3 x 0.8 cm
Weight	1.14 Kilograms

WARRANTY AND SUPPORT

The Tibuta tablet comes with a 1-year manufacturer's warranty. For technical support, warranty claims, or any inquiries, please contact Tibuta customer service through the retailer's platform or the official Tibuta website. Please retain your proof of purchase for warranty purposes.



