



[Manuals.plus](#) /

› [Spider Farmer](#) /

› Spider Farmer Glow30 LED Grow Lights Kits User Manual

Spider Farmer SF-Glow30

Spider Farmer Glow30 LED Grow Lights Kits User Manual

Model: SF-Glow30

1. INTRODUCTION

The Spider Farmer Glow30 LED Grow Lights Kits are designed to provide optimal lighting conditions for indoor plant growth. These supplemental light bars feature a full spectrum output, mimicking natural sunlight, to support plants through all growth stages from seedling to flowering. The IP65 waterproof design ensures safe and reliable operation in high-humidity environments, making them suitable for various indoor gardening setups.

This manual provides detailed instructions for the safe and efficient use of your Glow30 LED Grow Lights Kits. Please read it thoroughly before installation and operation.



Image: Four Spider Farmer Glow30 LED grow light bars connected, illustrating the product's design and connectivity.

2. PACKAGE CONTENTS

Verify that all components listed below are included in your package. If any items are missing or damaged, please contact customer support.

- 4 x Glow30 LED Grow Light Bars
- Mounting Kits (Adhesive-backed velcro and fixing clips)
- 1 x Timer
- 1 x User Manual
- Connect Cable (70cm / 25.56 inches)
- Power Cable (200cm / 78.74 inches)
- 4 x Bondage Straps
- 5 x Plastic Ties

PACKAGE INCLUDING

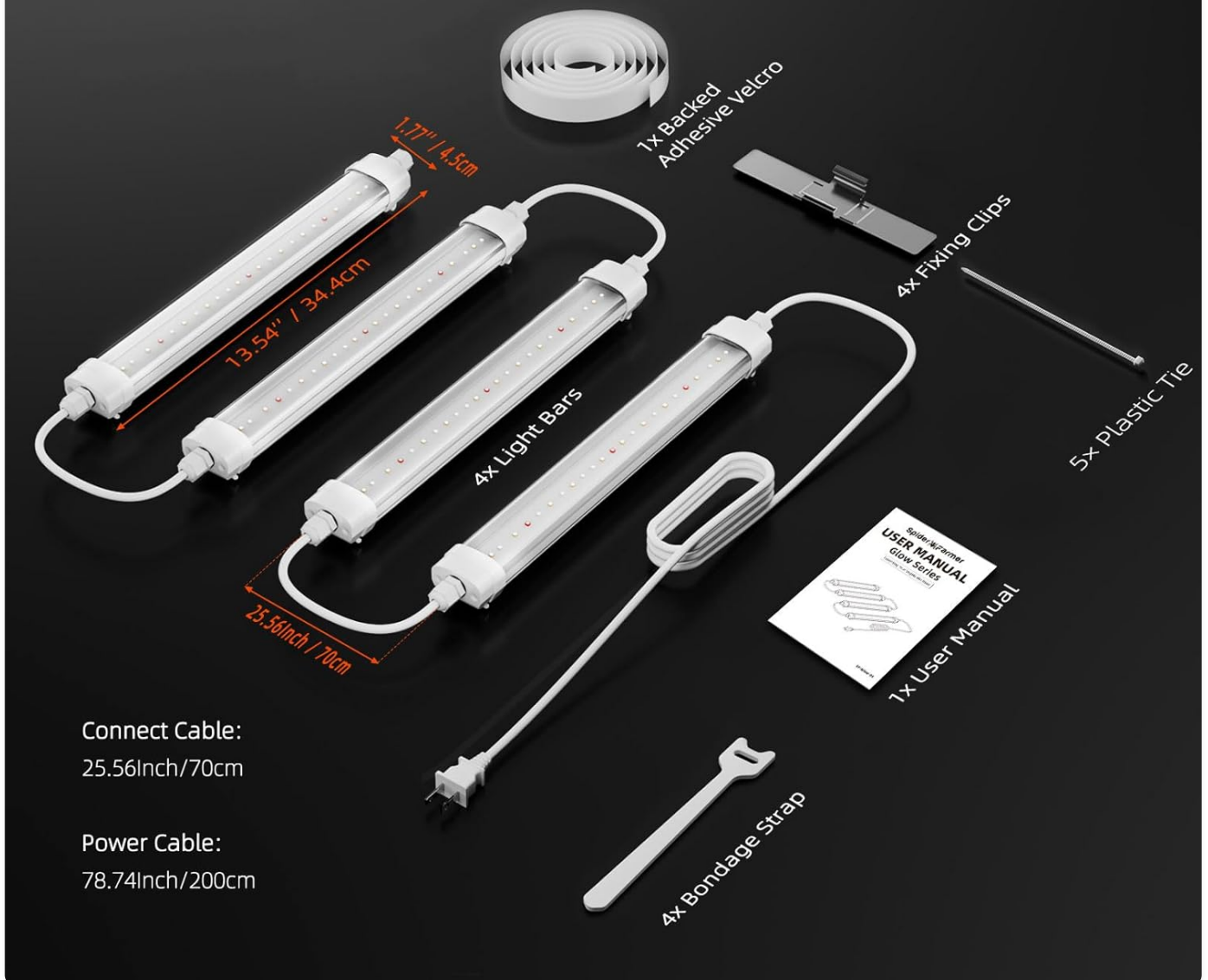


Image: A detailed view of all items included in the product package, showing the light bars, mounting hardware, and cables.

3. SPECIFICATIONS

Feature	Specification
Model Name	SF-Glow30
Light Source Type	LED
Spectrum	Full Spectrum (5000-5500K White, 3000-3500K Warm-White, 650-660nm Red)
Wattage	32 watts (Total for 4 bars)
Brightness	4800 Lumen
Voltage	2.3E+2 Volts

Product Dimensions	13.54"D x 1.77"W x 1.46"H (per bar)
Item Weight	1.7 Pounds (Total)
Material	Aluminum, Polycarbonate (PC)
Water Resistance Level	IP65 Waterproof
Indoor/Outdoor Usage	Indoor
Control Method	Touch (via timer)

4. SAFETY INFORMATION

WARNING: Read all safety warnings and instructions before using this product. Failure to follow the warnings and instructions may result in electric shock, fire, or serious injury.

- Do not look directly at the LED lights when they are operating. The intense light can cause eye strain or damage.
- Ensure the power supply voltage is compatible with the light's requirements (2.3E+2 Volts).
- Do not operate the lights with a damaged cord or plug.
- Keep the lights away from flammable materials.
- Although the lampshade is IP65 waterproof, avoid submerging the light bars in water.
- Do not attempt to disassemble or modify the light bars. This will void the warranty and may lead to electrical hazards.
- Always unplug the light from the power source before cleaning or performing any maintenance.
- Ensure proper ventilation around the light bars to prevent overheating.

IP65-RATED PROTECTION

Added transparent lampshade, usable in high humidity conditions



Image: The IP65 waterproof lampshade protecting the LED beads, ensuring safe use in humid conditions.

5. SETUP AND INSTALLATION

The Glow30 LED Grow Lights feature a unique installation design for easy setup.

1. **Prepare Mounting Surface:** Identify the desired location for your light bars. Ensure the surface is clean and dry.
2. **Apply Velcro:** Confirm the position for each light bar. Cut the supplied adhesive-backed velcro to the appropriate length, peel off the backing, and firmly stick it to the mounting surface.
3. **Attach Fixing Clips:** Secure the fixing clips to the mounting surface, aligning them with where the light bars will be placed. The clips allow for 360-degree rotation, enabling you to adjust the light direction.
4. **Snap Light Bars:** Gently snap each light bar onto the fixing clips. Ensure they are securely seated and then press the light bar firmly against the velcro for additional stability.
5. **Connect Light Bars:** Use the provided connect cables to link the light bars in series.

6. **Connect Power:** Plug the power cable into the first light bar in the series, and then plug the power cable into a standard electrical outlet.
7. **Optional Timer Setup:** If using the included timer, connect the power cable from the light bars to the timer, and then plug the timer into the electrical outlet. Refer to the timer's specific instructions for programming light cycles.

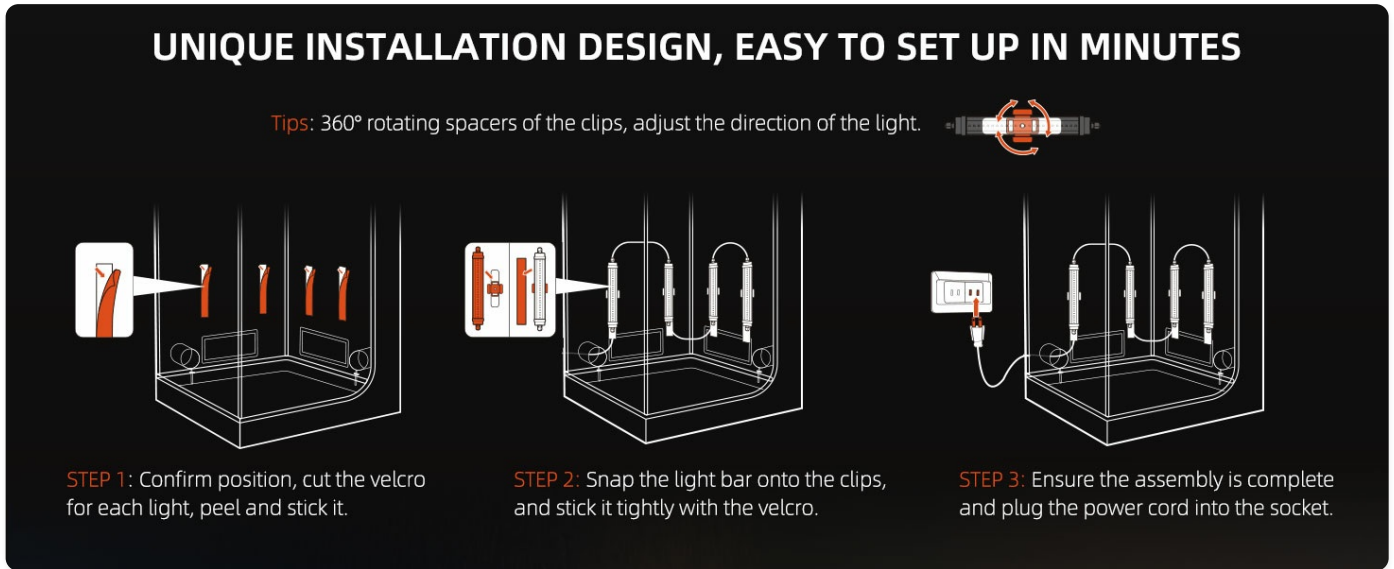


Image: Step-by-step visual guide for installing the light bars using adhesive velcro and adjustable fixing clips.

6. OPERATING INSTRUCTIONS

The Glow30 LED Grow Lights are designed for simple plug-and-play operation. Once installed and connected to power, they will illuminate.

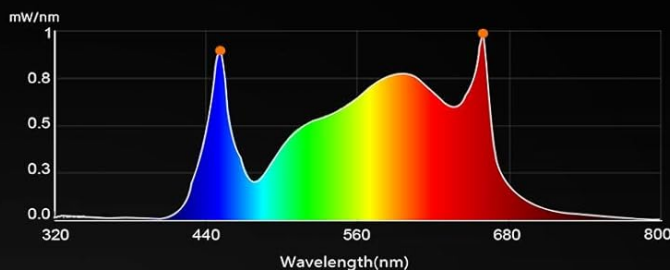
6.1 Full Spectrum Lighting

The Glow30 bars emit a full spectrum light, optimized for plant absorption. This includes:

- **5000-5500K White Light:** Supports overall plant health and boosts flowering.
- **3000-3500K Warm-White Light:** Promotes germination and early vegetative growth.
- **650-660nm Red Light:** Essential for photosynthesis, promoting robust growth, and increasing yield during budding and flowering stages.

FULL SPECTRUM SUNLIKE GROW LIGHTS

Everything Your Vegetables Need



5000K White Light
Boost Flowering



3000K Warm White Light
Promote Germination



660nm Red Light
Yield More Buds & Crops

Image: Visual representation of the full spectrum output, highlighting the different light components and their benefits for plant growth.

6.2 Supplemental Coverage

These 13-inch LED bars are ideal for supplemental lighting, providing expanded light coverage to areas that primary grow lights might not reach effectively. This helps optimize your grow setup and can boost plant yields by ensuring uniform light distribution.



Image: PPFD (Photosynthetic Photon Flux Density) map demonstrating the light coverage and intensity provided by four Glow30 light bars in a grow environment.

6.3 Using the Timer

The included digital programmable timer allows you to automate the on/off cycles of your grow lights. This is crucial for maintaining consistent light schedules for your plants.

- Plug the timer into the wall outlet.
- Plug the grow light power cable into the timer.
- Refer to the separate timer instruction manual for detailed programming steps. The timer typically supports multiple ON/OFF programs and 7-day programmability.

DIGITAL PROGRAMMABLE TIMER



ETL Safe Listed



20 ON /OFF Programs for timer



Max 15A 1875W



+ High Flame Retardant PC



7-Day Programmable



Image: The digital programmable timer included with the kit, allowing for automated light cycles.

7. MAINTENANCE

Regular maintenance ensures the longevity and optimal performance of your Glow30 LED Grow Lights.

- **Cleaning:** The IP65 waterproof lampshade makes cleaning easy. Disconnect the power before cleaning. Use a soft, damp cloth to wipe down the light bars. Do not use harsh chemicals or abrasive cleaners.
- **Inspection:** Periodically inspect the power cord, connect cables, and light bars for any signs of damage, fraying, or loose connections. If any damage is found, discontinue use and contact customer support.
- **Ventilation:** Ensure that the area around the light bars has adequate airflow to dissipate heat. While LEDs produce less heat than traditional grow lights, proper ventilation is still important for optimal performance and lifespan.

8. TROUBLESHOOTING

If you encounter issues with your Glow30 LED Grow Lights, refer to the following common problems and solutions:

Problem	Possible Cause	Solution
Lights do not turn on.	No power supply; loose connection; faulty outlet; timer not set correctly.	Check if the power cord is securely plugged into the outlet and the light bar. Test the outlet with another device. Ensure the timer is set to "ON" or programmed correctly.
Lights flicker or dim.	Unstable power supply; loose connection; light bar issue.	Ensure stable power. Check all connections between light bars and power source. If flickering persists, contact customer support.
One or more light bars are not working.	Faulty connection between bars; individual bar failure.	Check the connection cables between the non-working bar and the previous one. Try swapping the position of the non-working bar to isolate the issue.
Timer is not working.	Incorrect programming; timer malfunction.	Refer to the timer's specific instruction manual for programming. Ensure it is receiving power.

If the problem persists after attempting these solutions, please contact Spider Farmer customer support.

9. WARRANTY AND SUPPORT

Spider Farmer products are manufactured to high-quality standards. For information regarding warranty coverage and terms, please refer to the warranty card included in your package or visit the official Spider Farmer website. For technical support, troubleshooting assistance, or replacement parts, please contact Spider Farmer customer service:

- **Website:** www.spider-farmer.com
- **Email:** Refer to your warranty card or website for specific contact email.
- **Phone:** Refer to your warranty card or website for specific contact number.

When contacting support, please have your product model (SF-Glow30) and purchase information ready.

© 2024 Spider Farmer. All rights reserved.
This manual is subject to change without notice.