

## DEPSTECH DS520

# DEPSTECH DS520 Industrial Endoscope and 50FT Fish Tape Wire Puller User Manual

Model: DS520  
Brand: DEPSTECH

## PRODUCT OVERVIEW

The DEPSTECH DS520 Industrial Endoscope is a versatile inspection tool designed for examining hard-to-reach areas. It features a high-definition camera, a built-in display, and a flexible cable, making it suitable for various industrial, automotive, and household applications. This package also includes a 50FT fish tape wire puller for electrical and cabling tasks.

### Key Features:

- **0.21-inch Probe:** Small diameter for easy access to confined spaces.
- **1080P HD Digital Borescope:** Captures crisp pictures and fluent videos.
- **4.3-inch LCD Screen:** Wide-angle display for convenient viewing.
- **IP67 Waterproof:** Camera probe is resistant to water, suitable for wet environments.
- **Adjustable LED Lights:** 6 LED lights with Bluart 2.0 technology for clear visibility in dark conditions.
- **5M Semi-Rigid Cable:** Flexible yet holds shape for navigating narrow areas.
- **50FT Fish Tape Wire Puller:** Durable, waterproof PET resin tape for wire installations.
- **No Wi-Fi/Bluetooth/App Required:** Standalone operation for ease of use.
- **One-button 180° Rotation:** Easily switch camera orientation.
- **Built-in Rechargeable Battery:** Provides approximately 4 hours of continuous work.

## PACKAGE CONTENTS

The DEPSTECH DS520 Industrial Endoscope package includes the following items:

- DEPSTECH DS520 Industrial Endoscope Unit (with 4.3-inch LCD screen)
- 5M Semi-Rigid Camera Cable (0.21-inch probe)
- 50FT Fish Tape Wire Puller
- USB Charging Cable
- User Manual

- Accessories: Hook, Magnet, Mirror (for camera probe)
- 32GB TF Card (pre-installed or included)



A comprehensive view of the DEPSTECH DS520 Industrial Endoscope kit, including the main display unit, the coiled semi-rigid camera cable, the 50FT fish tape wire puller, and various small accessories.

## SETUP

### 1. Charging the Device:

Before first use, ensure the endoscope unit is fully charged. Connect the provided USB charging cable to the unit's input port (located under the rubber cover on the side) and to a suitable USB power adapter. The built-in rechargeable battery provides approximately 4 hours of continuous operation on a full charge.

### 2. Inserting the TF Card:

The device supports recording images and videos to a TF (MicroSD) card. Locate the TF card slot next to the charging port, under the protective rubber cover. Insert the provided 32GB TF card until it clicks into place.

### 3. Attaching the Camera Probe:

Connect the semi-rigid camera cable to the main endoscope unit by screwing it securely into the designated port on top of the unit.



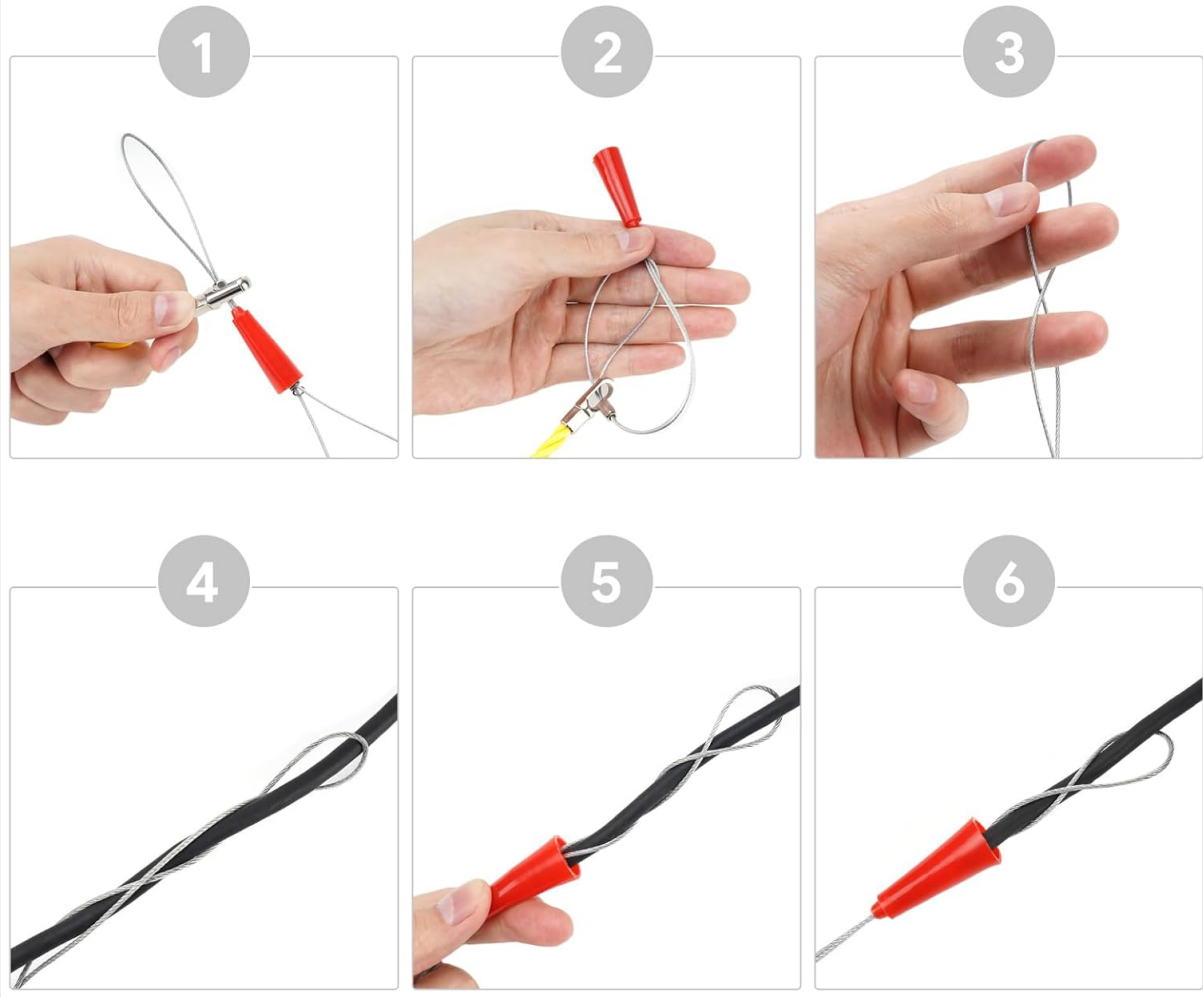


A hand holds the DEPSTECH DS520 endoscope unit, with the camera cable connected and inserted into an engine compartment, displaying the live feed on the 4.3-inch LCD screen.

#### **4. Attaching Accessories (Optional):**

For specific tasks, you can attach the included hook, magnet, or mirror to the tip of the camera probe. Simply screw the desired accessory onto the threaded end of the probe.

# Installation Method



A close-up of the small hook, magnet, and mirror attachments that can be screwed onto the end of the endoscope camera probe for retrieving objects or changing viewing angles.

## OPERATING INSTRUCTIONS

### 1. Powering On/Off:

Press and hold the power button (usually marked with a power symbol) on the unit to turn it on or off. The LCD screen will display the live camera feed upon startup.

### 2. Adjusting LED Lights:

The camera probe is equipped with 6 adjustable LED lights. Use the dedicated light adjustment buttons on the unit to cycle through different brightness levels to ensure optimal visibility in dark environments.

# High Quality



An illustration showing the endoscope camera probe with its 6 LED lights, demonstrating three different levels of adjustable brightness for varied inspection conditions.

### 3. Capturing Images and Videos:

To take a still picture, briefly press the photo capture button (usually marked with a camera icon). To record a video, press and hold the video capture button (usually marked with a video camera icon) to start recording, and press it again briefly to stop. All captured media will be saved to the inserted TF card.

### 4. 180° Image Rotation:

For better observation, the device supports one-button 180° image rotation. Use the designated rotation button to flip the image on the screen as needed.

### 5. Using the Fish Tape Wire Puller:

The 50FT fish tape wire puller is designed for routing wires through walls, conduits, and other tight spaces. Its semi-rigid yet flexible design allows it to navigate bends and maintain its shape.





A coiled yellow 50FT fish tape wire puller with a red and silver connector in the center, used for threading wires through difficult spaces.

## 6. Fish Tape Installation Method:

Follow the visual guide for proper installation of the wire onto the fish tape.

# 5.5MM ULTRA THIN LENS



A six-step visual guide demonstrating how to securely attach a wire to the fish tape puller, ensuring a strong connection for pulling through conduits.

## MAINTENANCE

---

### 1. Cleaning the Camera Lens:

After each use, especially in dirty or wet environments, gently wipe the camera lens with a soft, dry cloth. For stubborn dirt, use a lens cleaning solution and a microfiber cloth. Ensure the lens is dry before storing.

### 2. Storing the Device:

Store the endoscope unit and its accessories in a cool, dry place, away from direct sunlight and extreme temperatures. Coil the camera cable neatly to prevent kinks or damage.

## TROUBLESHOOTING

---

### 1. No Image on Screen:

- Ensure the camera cable is securely connected to the main unit.
- Check if the unit is powered on and has sufficient battery charge.
- Verify that the camera lens is not obstructed.

## 2. Poor Image Quality:

- Clean the camera lens as described in the Maintenance section.
- Adjust the LED light brightness to suit the environment.
- Ensure the camera is within the optimal focal range (1.96~3.93 inches / 5-10cm).

## 3. Device Not Charging:

- Check the USB charging cable for any damage.
- Ensure the charging adapter is functional.
- Verify the charging port on the unit is clean and free of debris.

## SPECIFICATIONS

Feature	Specification
Brand	DEPSTECH
Connectivity Technology	USB
Water Resistance Level	IP67 Waterproof
Video Capture Resolution	1080p
Shooting Modes	Picture
Screen Size	4.3 inches
Camera Probe Diameter	0.21 inches (6mm)
Cable Length	5 meters (approx. 16.4 ft) for endoscope, 50 ft for fish tape
Battery Life	Approx. 4 hours continuous use

## WARRANTY AND SUPPORT

For warranty information, technical support, or service inquiries, please refer to the official DEPSTECH website or contact their customer service directly. Keep your purchase receipt as proof of purchase. You can visit the DEPSTECH Store on Amazon for more products and support:[DEPSTECH Amazon Store](#)

## SAFETY INFORMATION

- Do not attempt to disassemble or modify the device.
- Keep the device away from extreme temperatures, corrosive liquids, and strong magnetic fields.
- Ensure the protective rubber cover for the charging and TF card ports is securely closed when operating in wet conditions.
- Use only the provided charging cable to prevent damage to the battery.