

## AkaGear DS10 Pro

# AkaGear DS10 Pro Keyless Entry Door Lock Instruction Manual

Model: DS10 Pro

### INTRODUCTION

The AkaGear DS10 Pro Keyless Entry Door Lock provides advanced security and convenient access to your home. This smart lock offers multiple unlocking methods including fingerprint, PIN code, smartphone app, and traditional mechanical keys. Designed for ease of use and robust protection, it integrates seamlessly into modern smart home environments. This manual provides detailed instructions for installation, operation, maintenance, and troubleshooting to ensure optimal performance and security.

Your browser does not support the video tag.

**Video Description:** An overview of the AkaGear DS10 Pro Keyless Entry Door Lock, showcasing its features and design. This video provides a general introduction to the product's capabilities and appearance.

### SETUP AND INSTALLATION

Proper installation is crucial for the functionality and security of your AkaGear DS10 Pro lock. Please follow these steps carefully.

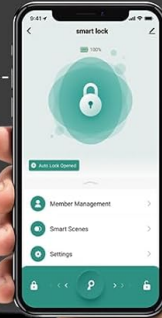
#### 1. Pre-Installation Checks

Before beginning installation, verify your door's compatibility and dimensions.

- The deadbolt smart lock is suitable for 2-1/8" (54mm) door holes. It is not compatible with 38mm door holes.
- Ensure your door is compatible with a single cylinder deadbolt. Mortise or integrated lock types are not supported.
- Door thickness should be between 1-3/8" to 2" (35mm or 50mm).
- Backset can be 2-3/8" or 2-3/4" (60mm or 70mm).

# Four Ways to Unlock Door

APP



Fingerprint



Code



Key



**Image Description:** This image illustrates different door latch hole types (chiseled vs. not chiseled) and door compatibility with various lock types (single cylinder, mortise, integrated). It highlights that the AkaGear DS10 Pro is compatible with single cylinder deadbolts and specific door hole configurations.

# Easy Installation



**Image Description:** A diagram showing how to measure door dimensions for compatibility, including backset, door thickness, and door hole diameter (2-1/8" or 54mm). It also indicates left-handed and right-handed door orientations.

## 2. Installation Steps

Follow these steps to install your new smart lock.

1. Remove your existing deadbolt lock.
2. Install the new latch into the door edge, ensuring the arrow points upwards. Secure it with screws.
3. Insert the keypad assembly into the door hole, feeding the cable through.
4. Mount the backplate onto the door, aligning it with the keypad and securing it with screws.
5. Connect the cable from the keypad to the back lock assembly.
6. Attach the back lock assembly to the mounting plate and secure it.
7. Install 4xAA alkaline (non-rechargeable) batteries (not included) into the battery compartment.
8. Replace the battery cover.



**Image Description:** A visual guide showing six steps for easy installation: 1) Install the bolt, 2) Install the keypad, 3) Install the mounting plate, 4) Connect the cable, 5) Install the back lock, 6) Install the batteries and cover. This provides a clear sequence for physical setup.

Your browser does not support the video tag.

**Video Description:** This video demonstrates the step-by-step process of installing the AkaGear Smart Door Lock. It covers removing the old lock, installing the new components, and securing the unit to the door, providing a visual aid for the installation process.

## OPERATING INSTRUCTIONS

Your AkaGear DS10 Pro offers multiple convenient ways to unlock and secure your door.

### 1. Unlocking Methods

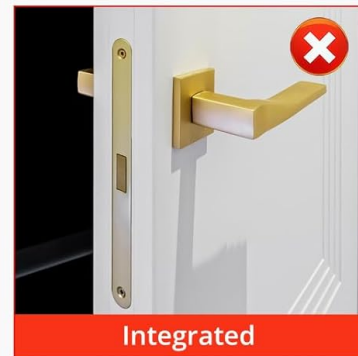
- **Fingerprint Unlock:** Place your registered finger on the fingerprint sensor for quick access (0.3-second recognition). The lock supports up to 50 unique fingerprints.
- **PIN Code Unlock:** Enter your programmed PIN code on the keypad. The anti-peeping password feature allows you to enter random digits before and after your actual code to prevent others from guessing it.
- **Smartphone App Unlock:** Use the dedicated smartphone app (via Bluetooth) to unlock the door remotely. You can also manage users, set permissions, and monitor access logs. (Note: Remote control via Alexa/Google Home Assistant requires a separate Gateway, ASIN: B0F5GKK5HY).
- **Mechanical Key Unlock:** Use the provided mechanical keys as a backup for manual unlocking.

## Check the Type of the Door before Purchase

### Latch Hole



### Door Compatibility



**Image Description:** This image highlights the fingerprint quick unlock feature, showing a finger on the sensor with details like 0.3s biometrics identification, 99.99% recognition rate, IP54 waterproof rating, and 500 DPI resolution.

# Security Auto-lock & One-touch Locking

Auto locks 05-59 seconds after closing the door.



If auto-lock is not set on, you can need to touch the key to lock the door.

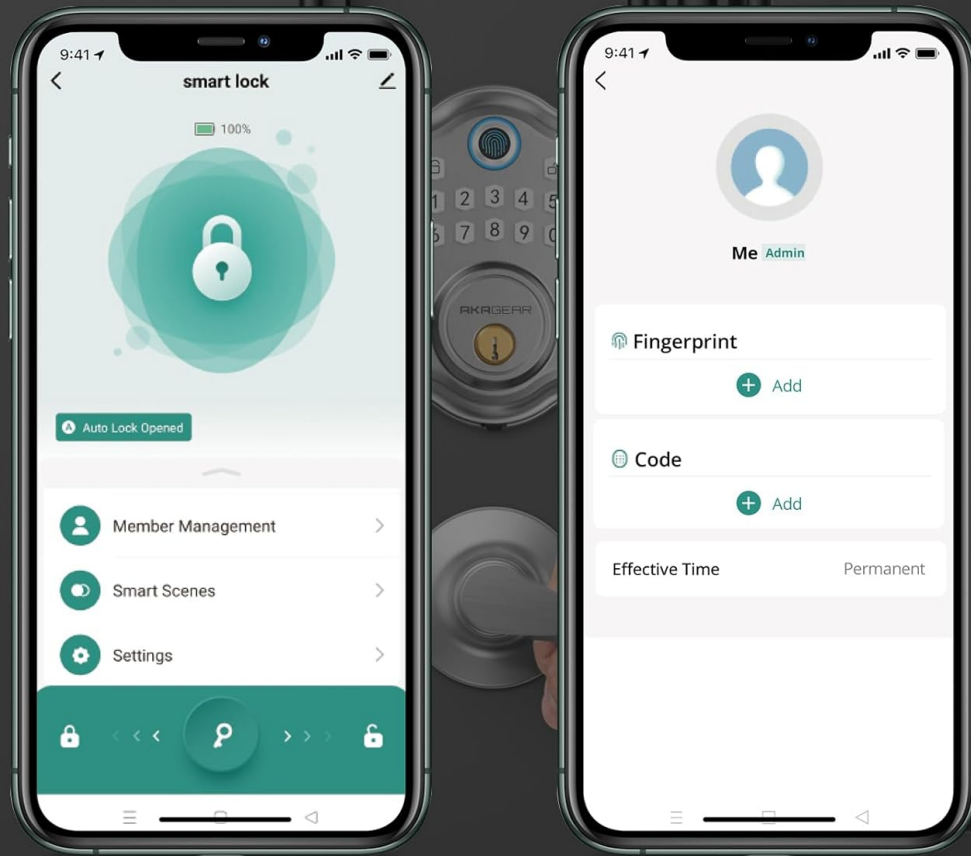
**Image Description:** A visual representation of the four unlocking methods: App, Fingerprint, Code, and Key. Each method is depicted with an icon and a corresponding image of the lock being used with that method.

## 2. Auto-Lock and Mute Mode

- **Auto-Lock:** The lock can be configured to automatically lock 5-59 seconds after closing the door, ensuring your home is always secure. If auto-lock is not set, you can manually lock by touching the lock button.
- **Mute Mode:** Enable mute mode for quiet entry and exit, ideal for not disturbing others during late hours.

## Easy Management via APP

Through the app, you can control your smart lock, view the lock status, and monitor lock activities.



\*Door handle is not included

**Image Description:** This image demonstrates the auto-lock feature, showing a person entering their home with groceries while the lock automatically secures the door within 5-59 seconds. It also mentions one-touch locking.

### 3. App Management and Programming

The smartphone app provides comprehensive control over your lock's settings and user management.

- Add or delete user fingerprints and PIN codes.
- Set temporary or one-time access codes for guests or service providers.
- View access logs to monitor who enters and exits your home.
- Adjust lock settings such as auto-lock delay and volume.



# Long Battery Life & Backup Power

Unlock up to 50,000 times



**Up to 12 Months  
Battery Life**

(4AA batteries are  
not included)



**Low Battery  
Indicator Light**

**Image Description:** Two smartphone screens displaying the AkaGear smart lock app interface. One screen shows the main lock status and options like Member Management, Smart Scenes, and Settings. The other screen shows the user management interface for adding fingerprints and codes.

Your browser does not support the video tag.

**Video Description:** This video provides a detailed guide on programming the DS10 / DS10 Pro Fingerprint Door Lock. It covers steps for changing the programming code, setting user codes, and adding user fingerprints, illustrating the process with on-screen instructions and keypad interactions.

## MAINTENANCE

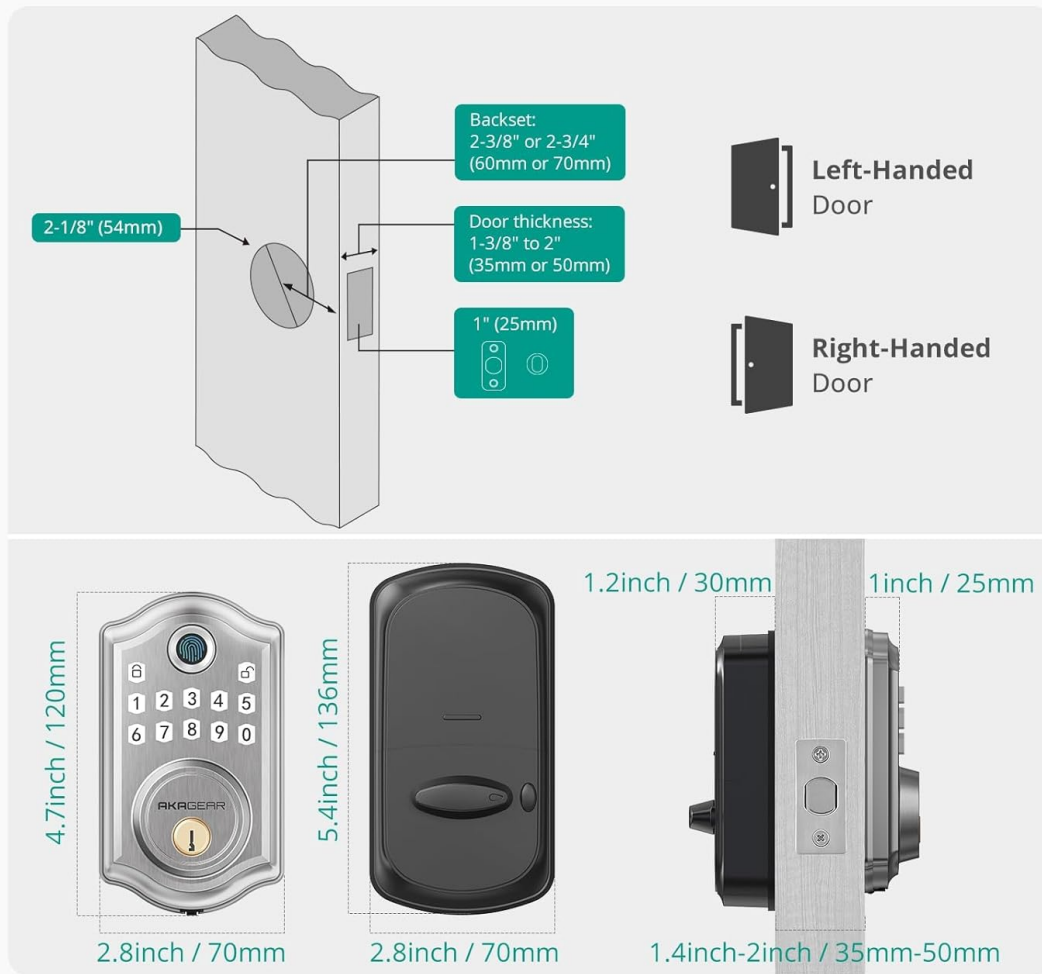
To ensure the longevity and reliable performance of your AkaGear DS10 Pro lock, follow these maintenance guidelines.

### 1. Battery Management

- The lock operates on 4xAA alkaline (non-rechargeable) batteries (not included).
- Expect up to 12 months of battery life or approximately 7,000 cycles.
- The lock will provide low-battery alerts when replacement is needed.
- In case of complete battery depletion, use the backup power feature via a USB-C port or the mechanical keys to gain access.



## Check The Size Before Your Purchase



**Image Description:** This image illustrates the long battery life of the lock, stating up to 12 months of battery life (4xAA batteries not included). It also shows a low battery indicator light on the keypad, signaling when batteries need replacement.

### 2. Cleaning and Care

- Wipe the keypad and sensor with a soft, dry cloth. Avoid abrasive cleaners or solvents.
- Ensure the fingerprint sensor is clean for optimal recognition.

## TROUBLESHOOTING

If you encounter issues with your AkaGear DS10 Pro lock, refer to these common solutions.

- **Lock not responding:** Check battery levels. If batteries are low or depleted, replace them or use the backup USB-C power port.
- **Fingerprint not recognized:** Ensure your finger is clean and dry. Try re-registering your fingerprint in the app. Ensure the sensor is clean.
- **PIN code not working:** Verify the correct PIN code is being entered. Ensure the lock is not in a programming mode. Try resetting the lock to factory settings if issues persist (refer to the app or manual).

for reset procedure).

- **App connectivity issues:** Ensure Bluetooth is enabled on your smartphone and you are within range of the lock. Restart the app or your phone if necessary.
- **Auto-lock not engaging:** Check the auto-lock settings in the app to ensure it is enabled and the delay time is set correctly.

## SPECIFICATIONS

Feature	Detail
Brand	AkaGear
Model Name	DS10 Pro
Lock Type	Biometric, Deadbolt, Keypad
Special Features	Anti-Peeping Password, Auto-Lock, Fingerprint, One-Touch Lock, Passcode Unlock
Material	Aluminum
Item Dimensions (L x W x H)	2.83 x 0.59 x 4.84 inches
Item Weight	1.68 pounds
Connectivity Protocol	Bluetooth
Control Method	App
Power Source	4xAA Batteries (not included)
Included Components	Fingerprint deadbolt door lock, 2 Standard Keys, Latch, Strike Plate, Screws, Installation Instructions
Door Hole Compatibility	2-1/8" (54mm)
Operating Temperature Range	158°F (70°C) to -25°F (-13°C)

## WARRANTY AND SUPPORT

AkaGear is committed to providing quality products and customer satisfaction.

- **Customer Commitment:** 30-day satisfaction guarantee.
- **Product Warranty:** 1-year warranty on all parts.
- **After-Sales Service:** Lifetime support, including online phone support from Monday to Friday, 9 AM to 5 PM PST, and 24/7 online email service.

For further assistance, please refer to the contact information provided with your product packaging or visit the

official AkaGear website.