

Dioche Diocheb1pn3yrti8

Dioche Keyless Electronic Deadbolt Door Lock Instruction Manual

Model: Diocheb1pn3yrti8

1. INTRODUCTION

This manual provides detailed instructions for the installation, operation, and maintenance of your Dioche Keyless Electronic Deadbolt Door Lock. Please read this manual thoroughly before installation and use to ensure proper function and safety. This electronic deadbolt offers enhanced security and convenient access control for various applications.

2. PRODUCT OVERVIEW AND COMPONENTS

The Dioche Keyless Electronic Deadbolt Door Lock is a high-security access control system designed for residential and commercial use. It features multiple unlocking methods including card, key, and remote control.

2.1 Package Contents

Verify that all components listed below are present in your package:

- 1 x Electric Control Lock Unit
- 1 x Lock Ear (Strike Plate)
- 1 x Lock Cylinder
- 3 x Mechanical Keys
- 10 x ID Keychains (RFID Tags)
- 1 x Lock Card (RFID Card)
- 1 x ID Card Reader
- 2 x Remote Controls
- Various Screws and Mounting Hardware (2 x Screws, 1 x Square Plate, 1 x Round Plate, 8 x Screws)



Image: All components included in the Dioche Keyless Electronic Deadbolt Door Lock package.

2.2 Product Features

- **Multiple Access Methods:** Unlock using RFID cards, mechanical keys, or remote controllers.
- **High Security:** Robust deadbolt mechanism designed to resist tampering.
- **Easy Battery Replacement:** Simple, tool-free battery access for continuous operation.
- **Simple Installation:** Designed for straightforward setup without professional assistance.
- **Durable Construction:** Made from stainless steel for longevity.



Image: Front view of the electronic deadbolt lock unit.

3. SPECIFICATIONS

Feature	Specification
Brand	Dioche
Model Number	Diocheb1pn3yrti8
Material	Stainless Steel
Unlock Method	Card, Key, Remote Control
Lock Power Supply	2 x 1.5V AA Batteries (not included)
Remote Control Power Supply	1 x 27A 12V 30mAH Dry Battery (built-in per remote)
Installation Method	Click
Item Weight	1.39 kg

Feature	Specification
Parcel Dimensions	18 x 12 x 9 cm



Image: Product dimensions of the electronic deadbolt lock.

4. SETUP AND INSTALLATION

The Dioche Keyless Electronic Deadbolt Door Lock is designed for simple installation. Follow these steps carefully:

4.1 Prepare the Door

1. Ensure your door is compatible with a standard deadbolt installation.
2. Measure the backset (distance from the door edge to the center of the bore hole) and door thickness to ensure proper fit.

4.2 Install the Lock Cylinder

1. Insert the lock cylinder into the door bore hole from the outside.
2. Secure it in place according to the provided hardware.

**High safety factor, simple installation,
durable**



Image: Electronic deadbolt lock installed on a door, showing key access.

4.3 Mount the Main Lock Unit

1. Align the main electric control lock unit with the lock cylinder and the door edge.
2. Secure the unit to the door using the provided screws. Ensure the wiring (if any) is properly connected and tucked away.
3. Install the lock ear (strike plate) on the door frame, aligning it with the deadbolt.

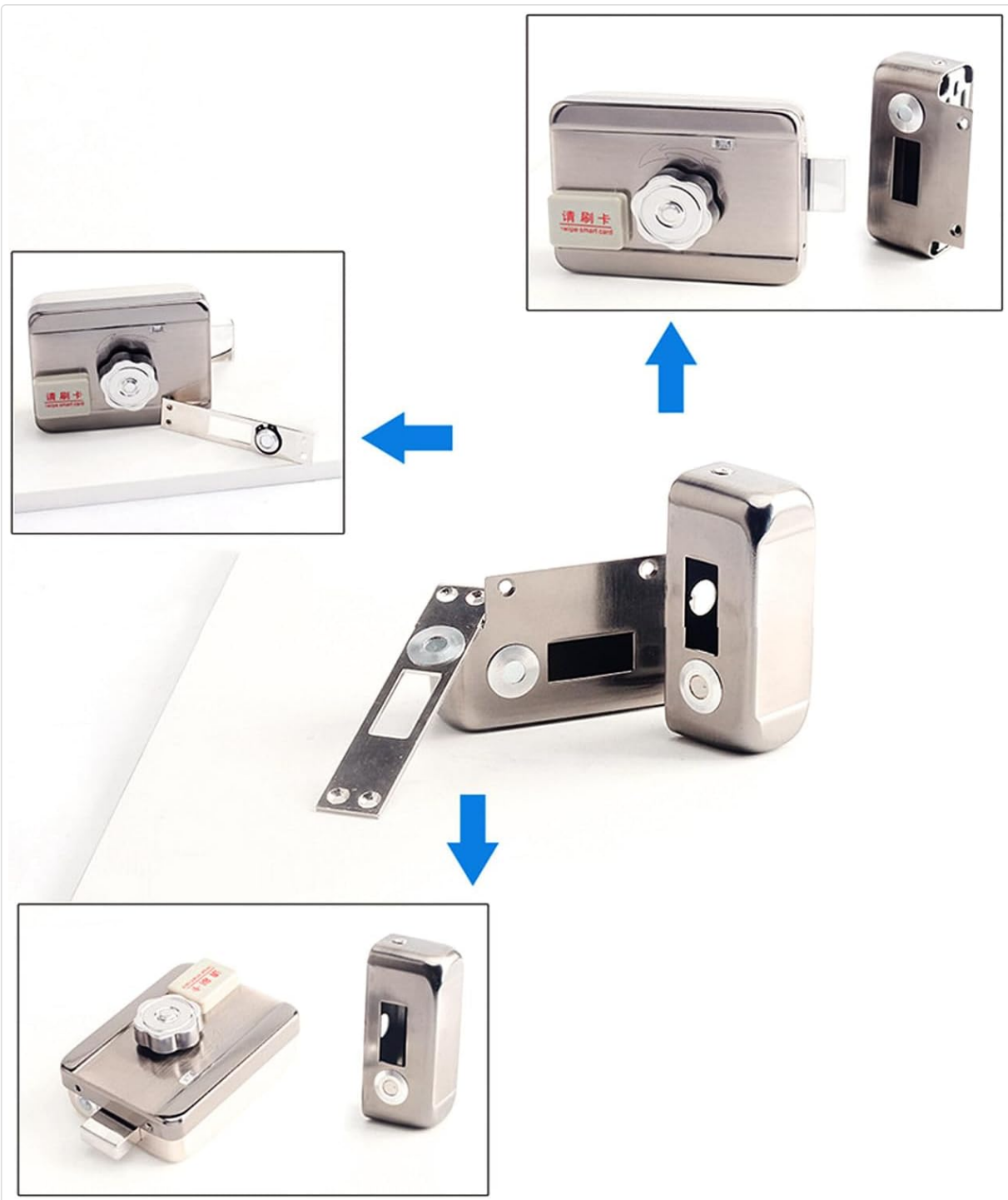


Image: Assembly diagram of the electronic deadbolt components.

4.4 Install Batteries

1. Open the battery compartment on the main lock unit.
2. Insert 2 x 1.5V AA batteries, ensuring correct polarity.
3. Close the battery compartment securely.

4.5 Test Functionality

1. Test the mechanical keys to ensure the deadbolt extends and retracts smoothly.
2. Test the remote controls and RFID cards/keychains to ensure they unlock the door.

5. OPERATING INSTRUCTIONS

Your Dioche Keyless Electronic Deadbolt Door Lock offers several convenient ways to secure and access your property.

5.1 Unlocking with RFID Card/Keychain

1. Present an authorized RFID card or keychain to the 'swipe smart card' reader on the lock unit.
2. The lock will emit a confirmation sound, and the deadbolt will retract, allowing the door to be opened.

5.2 Unlocking with Remote Control

1. Press the unlock button on one of the remote controllers.
2. The lock will retract the deadbolt, enabling door access.

5.3 Unlocking with Mechanical Key

1. Insert one of the provided mechanical keys into the external lock cylinder.
2. Turn the key to retract the deadbolt and open the door.

5.4 Locking the Door

1. From the inside, turn the manual knob on the lock unit to extend the deadbolt.
2. From the outside, the deadbolt will automatically extend after the door is closed, or can be manually extended using a key or remote if applicable to your specific setup.



Image: Manual turn knob for locking/unlocking from the inside.

6. MAINTENANCE

Regular maintenance ensures the longevity and optimal performance of your electronic deadbolt.

6.1 Battery Replacement

The lock unit is powered by 2 x 1.5V AA batteries. When the batteries are low, the lock may provide an

audible or visual indicator. Replace batteries promptly to avoid interruption of service.

1. Locate the battery compartment on the main lock unit.
2. Open the compartment cover (usually a slide or snap-on cover).
3. Remove the old AA batteries.
4. Insert two new 1.5V AA batteries, observing the correct polarity (+/-).
5. Close the battery compartment cover securely.

Remote controls use 1 x 27A 12V 30mAH dry battery each. Refer to the remote control's specific instructions for battery replacement if needed.

6.2 Cleaning

Wipe the lock's exterior with a soft, damp cloth. Avoid using abrasive cleaners or solvents, as these can damage the finish or electronic components.

6.3 Lubrication

Periodically apply a small amount of graphite lubricant to the mechanical keyway and deadbolt mechanism to ensure smooth operation. Do not use oil-based lubricants.

7. TROUBLESHOOTING

If you encounter issues with your Dioche Keyless Electronic Deadbolt Door Lock, refer to the following common problems and solutions:

- **Lock not responding to RFID card/keychain or remote control:**
 - Check if the batteries in the main lock unit are depleted. Replace them if necessary.
 - Ensure the RFID card/keychain or remote control is properly registered with the lock. Refer to programming instructions (not covered in this general manual).
 - Verify that the remote control battery is not depleted.
- **Deadbolt does not extend or retract smoothly:**
 - Check for any obstructions in the door frame or strike plate.
 - Ensure the lock is properly aligned with the strike plate. Adjust if needed.
 - Lubricate the deadbolt mechanism and keyway with graphite.
- **Lock makes unusual noises:**
 - This could indicate a mechanical issue or low batteries. Check battery levels first.
 - If the issue persists, contact customer support.

For issues not covered here, please contact Dioche customer support.

8. WARRANTY AND SUPPORT

For warranty information and customer support, please refer to the documentation provided at the time of purchase or visit the official Dioche website. Keep your purchase receipt as proof of purchase for warranty claims.

