



Manuals.plus /

› XYEIUGO /

› XYEIUGO Gobricks GDS-1591 Technic Beam 1x5 Instruction Manual

## XYEIUGO GDS-1591

# XYEIUGO Gobricks GDS-1591 Technic Beam 1x5 Instruction Manual

Model: GDS-1591

## INTRODUCTION

---

This manual provides essential information for the XYEIUGO Gobricks GDS-1591 Technic Beam 1x5 Thick with Alternating Holes. These components are designed for advanced building enthusiasts and adult collectors aged 16 and above, compatible with major brick brands. Please read these instructions carefully to ensure proper use and integration into your building projects.

## PRODUCT OVERVIEW

---

The Gobricks GDS-1591 Technic Beam 1x5 is a versatile building component featuring alternating holes, providing structural support and detail possibilities for custom creations (MOCs). Each pack contains 50 pieces, allowing for significant expansion of your collection and supporting a wide range of projects.

- **Structural Support:** Technic Beam 1x5 Thick with Alternating Holes (GDS-1591) offers robust structural support and detailing.
- **Consistent Color:** All pieces maintain a consistent color (Red for this variant) for a cohesive design aesthetic without color differences.
- **Durability:** Made from durable plastic material, supporting creative reuse and adaptation in various building projects.
- **Quantity:** Each package includes 50 pieces, ideal for expanding your building capabilities.

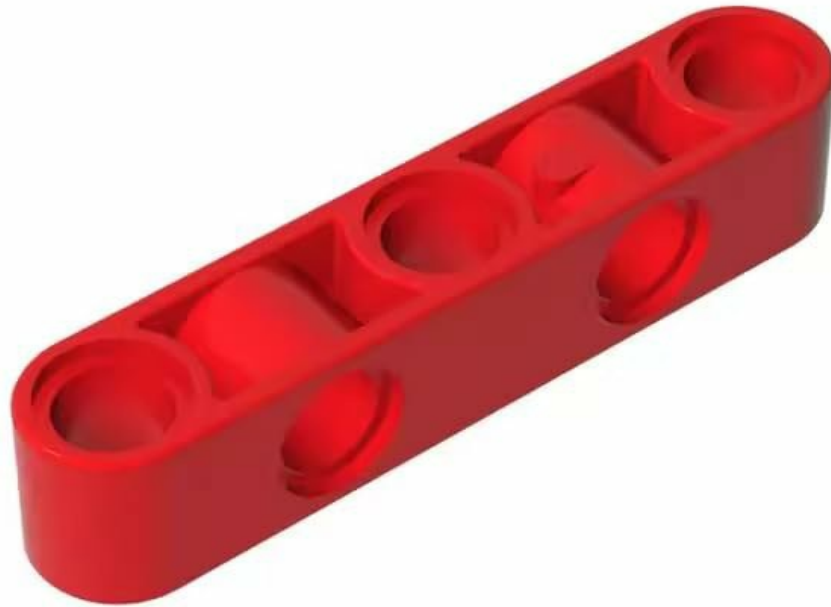


Image: A single red Gobricks GDS-1591 Technic Beam 1x5, showcasing its thick profile and alternating pin holes. This component is designed for structural integrity in advanced brick constructions.

## SETUP

---

1. **Unpack Components:** Carefully open the packaging and remove all 50 Technic beams.
2. **Prepare Workspace:** Ensure you have a clean, flat, and well-lit surface for building. This helps prevent loss of small parts and facilitates assembly.
3. **Organize:** If integrating with other building blocks, consider organizing your components by type or color for efficient building.

## OPERATING (INTEGRATION AND USE)

---

The Gobricks GDS-1591 Technic Beams are designed for integration into various building block systems, particularly those utilizing Technic-style connections. Their alternating holes allow for flexible attachment points and structural reinforcement.

- **Connecting Beams:** Use Technic pins (not included) to connect these beams to other Technic elements or standard bricks with pin holes. The alternating holes provide options for offset connections.
- **Structural Reinforcement:** Employ these thick beams to add rigidity and strength to larger models, frames, or mechanisms.

- **Creative Applications:** Experiment with different orientations and combinations to create unique structures, moving parts, or aesthetic details in your MOCs.
- **Compatibility:** These beams are compatible with major brick brands that use the standard Technic connection system.

## MAINTENANCE

---

Proper care ensures the longevity and appearance of your Gobricks Technic beams.

- **Cleaning:** To clean the beams, gently wipe them with a soft, damp cloth. For more thorough cleaning, use mild soap and lukewarm water. Rinse thoroughly and air dry. Avoid harsh chemicals or abrasive materials.
- **Storage:** Store the beams in a clean, dry place away from direct sunlight and extreme temperatures to prevent discoloration or material degradation.
- **Handling:** Avoid excessive force when connecting or disconnecting parts to prevent stress marks or breakage.

## TROUBLESHOOTING

---

If you encounter issues while using your Gobricks Technic beams, consider the following:

- **Parts Not Fitting:** Ensure you are using compatible Technic pins or connectors. Verify that the holes are clear of any debris.
- **Loose Connections:** If connections feel loose, check for worn pins or holes. While these beams are durable, repeated stress can affect fit over time.
- **Lost Parts:** Due to their small size, individual beams can be misplaced. Always work in a contained area and consider using sorting trays.
- **Color Discrepancy:** While Gobricks aims for consistent color, slight variations can occur between different production batches or materials. If a significant discrepancy is observed, contact the seller.

## SPECIFICATIONS

---

<b>Model Number</b>	GDS-1591
<b>Brand</b>	XYEIUGO (Gobricks)
<b>Type</b>	Technic Beam 1x5 Thick with Alternating Holes
<b>Material</b>	Plastic
<b>Color</b>	Red
<b>Number of Pieces</b>	50
<b>Item Weight</b>	2.24 ounces (approx. for 50 pieces)
<b>Recommended Age</b>	16+ years (Designed for collectors and adult enthusiasts)
<b>Educational Objective</b>	Construction Skills

## SAFETY INFORMATION

---

Please observe the following safety guidelines:

- **Small Parts Warning:** This product contains small parts which may pose a choking hazard. Keep away from

young children and pets.

- **Age Recommendation:** This product is intended for individuals aged 16 years and older. It is not a toy for young children.
- **Supervision:** Adult supervision is recommended when younger individuals (though above 16) are using these components.

## **WARRANTY AND SUPPORT**

---

Information regarding specific product warranty is not provided in this manual. For any questions, concerns, or support needs related to your Gobricks GDS-1591 Technic Beams, please contact the seller directly through the platform where the purchase was made. They can provide assistance with product inquiries, returns, or replacements.

For general inquiries about XYEIUGO products, you may visit the manufacturer's website if available.