



[Manuals.plus](#) /

> [WONNIE](#) /

> WONNIE Uhale 21.5 Inch Digital Picture Frame (Model: 215KZ) Instruction Manual

WONNIE 215KZ

WONNIE Uhale 21.5 Inch Digital Picture Frame (Model: 215KZ) Instruction Manual

Comprehensive guide for setup, operation, and maintenance of your digital photo frame.

INTRODUCTION

The WONNIE Uhale 21.5 Inch Digital Picture Frame provides a vibrant display for your cherished photos and videos. Featuring a 1920x1080 FHD IPS screen, dual-band Wi-Fi connectivity, and 64GB of built-in memory, this frame allows for easy sharing and display of digital memories. This manual will guide you through the setup, operation, and features of your new digital picture frame.

PACKAGE CONTENTS

- 21.5 Inch Digital Picture Frame
- Remote Control (with 2 AAA batteries)
- Power Adapter
- Table Stand
- Wall Mount Hardware
- User Manual

Package Contents

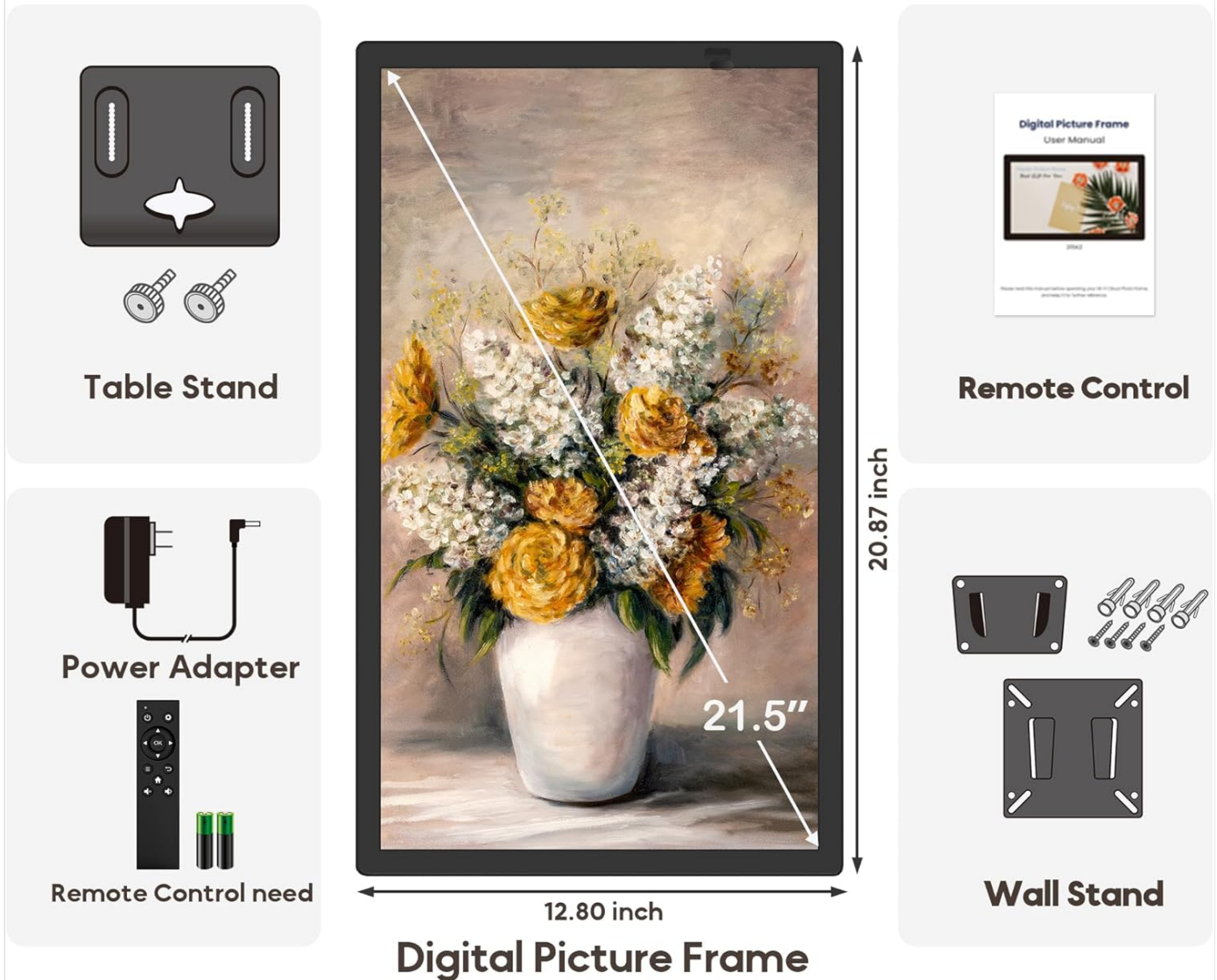


Image: The package contents including the digital picture frame, remote control, power adapter, table stand, wall mount hardware, and user manual.

SPECIFICATIONS

Brand	WONNIE
Model Number	215KZ
Screen Size	21.5 Inches
Resolution	1920 x 1080 (FHD)
Display Type	IPS
Internal Memory	64GB (stores over 50,000 photos)
Expandable Memory	Supports USB flash drive (up to 128GB) and SD card (up to 128GB)
Connectivity	2.4G & 5G WiFi
Supported Image Formats	JPG, JPEG, BMP, PNG
Supported Video Formats	MP4

Product Dimensions	20.8 x 12.7 x 0.99 inches
Item Weight	8.58 pounds

SETUP GUIDE

1. Initial Power On and Language Selection

1. Connect the digital frame to the power supply using the provided adapter.
2. Wait patiently for the frame to boot up.
3. Use the remote control to select your preferred language (e.g., English) on the screen.

Your browser does not support the video tag.

Video: This video demonstrates the initial power-on sequence, language selection, and Wi-Fi connection process for the digital picture frame.

2. Connecting to Wi-Fi

1. From the "Connect Wi-Fi" screen, use the remote control to select your home network.
2. Enter your Wi-Fi password using the on-screen keyboard and the remote control. Ensure the remote is aimed at the infrared receiving window.
3. Select "Done" and then "Connect" to establish the Wi-Fi connection.
4. The frame supports both 2.4GHz and 5GHz frequencies for reliable performance.

3. Setting Date and Time

1. After Wi-Fi setup, you will be prompted to set the date and time. Use the remote to adjust these settings.
2. You can also enable "Auto sync date & time" for automatic synchronization.

4. Naming Your Frame

1. Personalize your frame by giving it a unique name and specifying its location (e.g., "Living Room Frame"). This helps in managing multiple frames via the app.
2. You can skip this step if desired by pressing the right button on the remote.

5. Downloading and Pairing the Uhale App

1. Scan the QR code displayed on the frame screen with your mobile phone or search for "Uhale" in the App Store (iOS) or Google Play Store (Android) to download the app.
2. Open the Uhale app on your phone.
3. To connect your phone to the digital frame, scan the QR code or enter the provided ID code displayed on the frame. The QR code and ID code are valid for 12 hours.



Image: Instructions for downloading the Uhale app and connecting it to the digital frame using a QR code or ID code.

6. Uploading Photos and Videos

- **Via Uhale App:** Select photos or videos from your phone's gallery within the Uhale app. You can add captions and then send

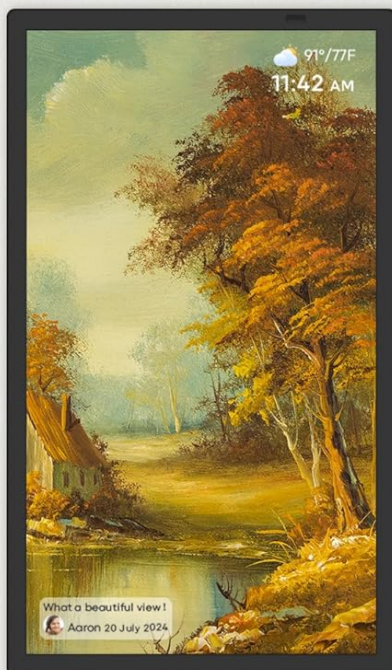
them to the frame. The app supports uploading up to 100 photos at once and videos up to 120 seconds long. You can monitor the transfer progress in the app's history.

- **Via USB Flash Drive or SD Card:** Insert a USB flash drive (up to 128GB) or SD card (up to 128GB) into the designated slots on the frame. You can directly play photos and videos from these devices or import/export them to the frame's internal 64GB memory.

Note: Please ensure the SD card and USB drive are formatted to "FAT32" before use. For optimal compatibility, a 32GB storage device is recommended, as larger capacities (e.g., 64GB/128GB) may not function correctly with this frame.

- **Via Uhale Web:** Connect your frame to Wi-Fi, log in to the Uhale web interface on a computer, and drag photos to upload them.

Instantly and Privately Sharing



Up to **100** pictures can be sent at a time



2 minutes videos uploaded via the Uhale app



Uhale

Instant Wireless Sharing



Download the **Uhale App** on android & ios



Image: The Uhale app interface showing how to select and send photos and videos to the digital frame.

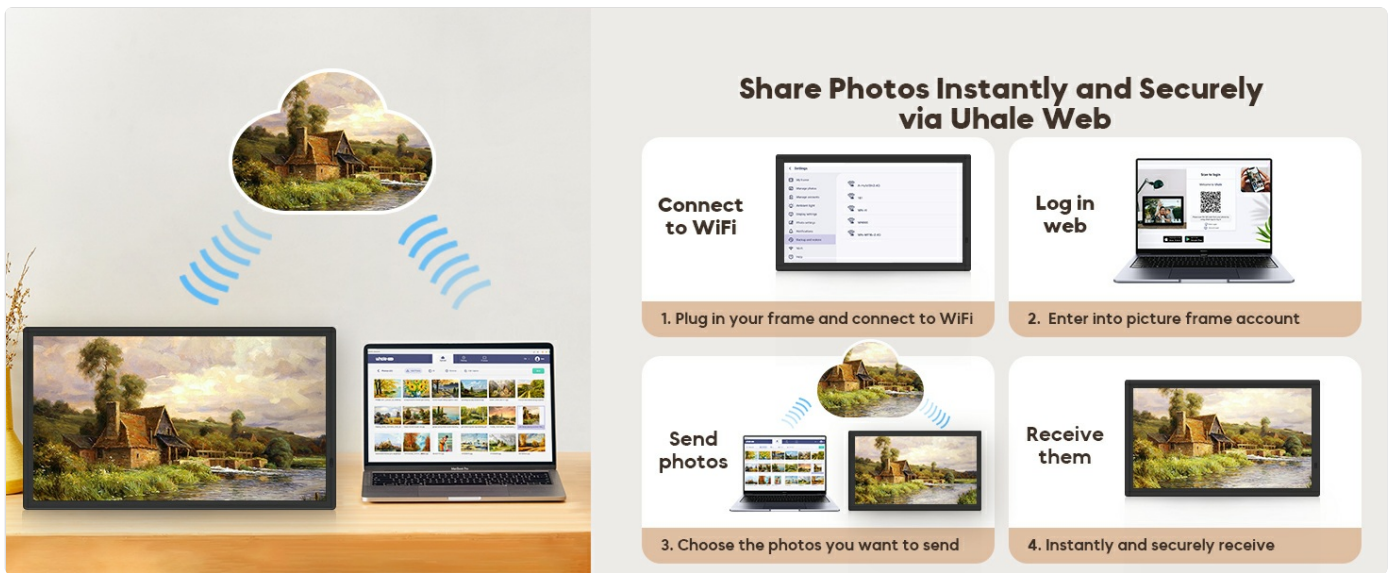


Image: A visual guide illustrating three methods for sharing content: via the Uhale app, Uhale web, and directly through SD card/USB flash drive.

OPERATING INSTRUCTIONS

1. Navigating Photos and Videos

- Use the provided remote control to navigate through your photos and videos. The remote allows you to slide photos left and right for convenient browsing.
- The frame supports automatic rotation, adjusting the display for both landscape and portrait orientations.

Remote Control

More Convenient to Switch Photos



Image: A hand holding the remote control, demonstrating its use to switch between photos on the digital frame.

Adjustable Frame Stand Angle and Wall-amount

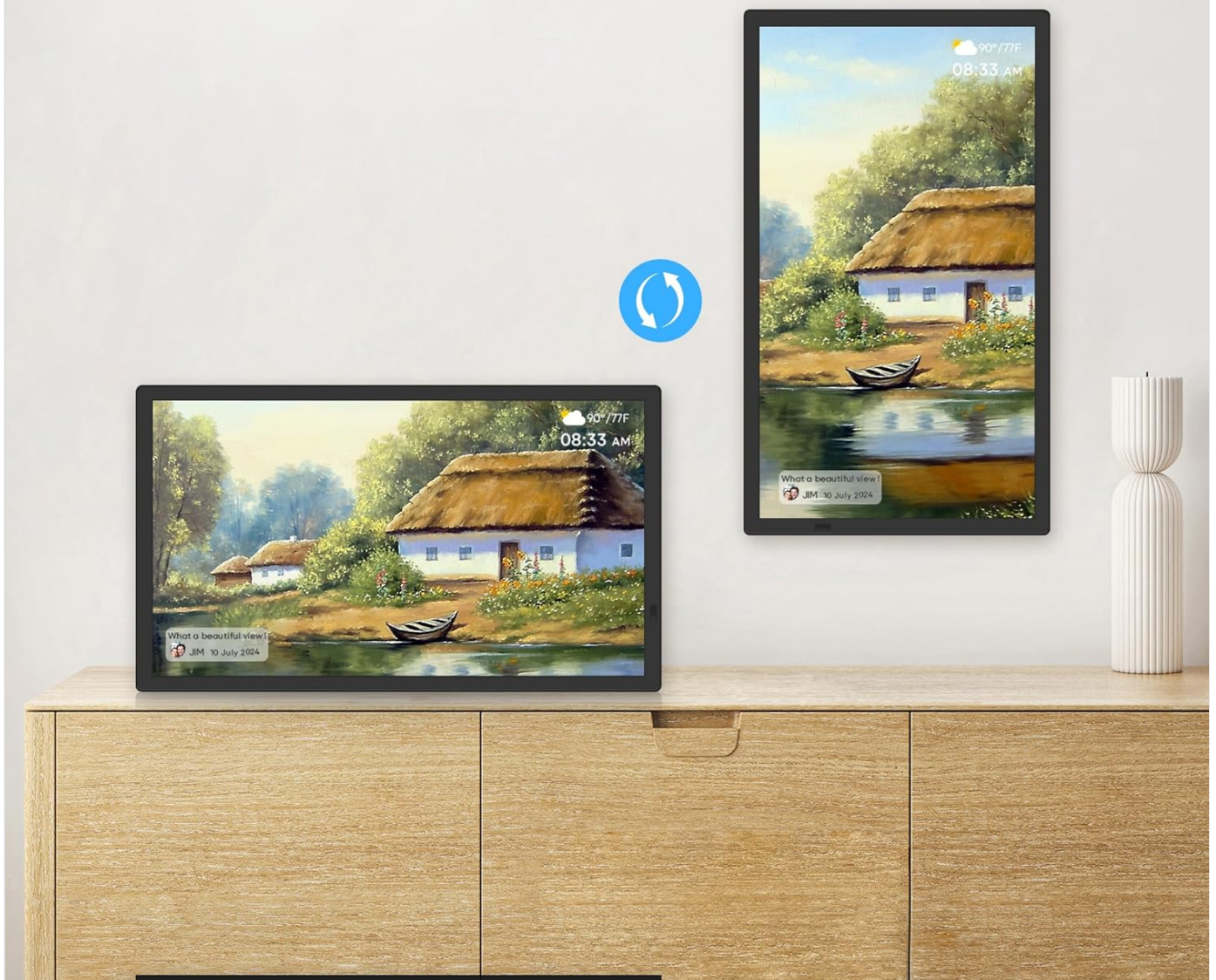


Image: The digital picture frame displayed on a desktop with an adjustable stand and also mounted on a wall, illustrating its versatile placement options.

2. Display Settings

- **Slideshow Mode:** The frame automatically plays a slideshow of your uploaded content. You can customize the playback order and transition effects.
- **Adjusting Photos:** Access multi-functional custom settings to adjust photos, such as filling the frame, displaying photo titles, and adjusting brightness.
- **Video Playback:** The frame supports video playback. Videos uploaded via SD/USB have no time limit, while videos uploaded through the Uhale app are limited to 120 seconds.

3. Sleep Mode

- Utilize the sleep mode feature to schedule display and turn-off times, enhancing energy efficiency.
- During sleep mode, the frame can function as a clock, displaying the time and temperature.

4. Audio Control

- Adjust the sound volume for videos directly using the remote control.

MAINTENANCE

- Keep the screen clean by gently wiping it with a soft, dry cloth. Avoid abrasive cleaners.
- Ensure proper ventilation around the frame to prevent overheating.
- Regularly back up your photos and videos to an external storage device to prevent data loss.

TROUBLESHOOTING

- **Frame not turning on:** Ensure the power adapter is securely connected to both the frame and a working power outlet.
- **Cannot connect to Wi-Fi:** Double-check your Wi-Fi password. Ensure the frame is within range of your Wi-Fi router and that the network is operational. The frame supports 2.4GHz and 5GHz networks.
- **Photos not displaying:** Verify that the image files are in supported formats (JPG, JPEG, BMP, PNG). Check if the SD card or USB drive is correctly formatted to "FAT32" and inserted properly.
- **Videos not playing:** Confirm that video files are in MP4 format. Note the 120-second limit for videos uploaded via the Uhale app. Videos from SD/USB have no time limit.
- **Remote control not working:** Check if the AAA batteries are correctly inserted and have sufficient power. Ensure there are no obstructions between the remote and the frame's infrared receiver.

WARRANTY AND SUPPORT

WONNIE offers a One-Year Easy Replacement Policy. Should you experience any issues with your smart photo frame, their dedicated after-sales team is committed to resolving them promptly within 24 hours. For support, please refer to the contact information provided in your product packaging or visit the official WONNIE website.