



Manuals.plus /

› MACTREM /

› MACTREM 22-inch Ring Light with 75-inch Tripod Instruction Manual

MACTREM 22-P

MACTREM 22-inch Ring Light with 75-inch Tripod Instruction Manual

INTRODUCTION

This manual provides comprehensive instructions for the setup, operation, and maintenance of your MACTREM 22-inch Ring Light with 75-inch Tripod. Please read this manual carefully before use to ensure optimal performance and safety.

WHAT'S IN THE BOX

- 22-inch (56cm) LED Ring Light x 1
- 75-inch (190cm) Tripod x 1
- Phone/Tablet Clip x 1
- Hot Shoe Adapter x 1
- Ring Light Remote Controller x 1
- Bluetooth Remote Control CH-3 x 1
- Ring Light Storage Bag x 1
- Phone Clip x 3
- Instruction Manual x 1

SETUP INSTRUCTIONS

1. **Assemble the Tripod:** Extend the tripod legs to a stable position. Adjust the height by loosening the locking knobs on the tripod sections, extending to the desired height, and then tightening the knobs securely. The tripod can extend up to 75 inches (190cm).



Image: The tripod stand is shown at different heights, illustrating its adjustable nature, from compact to its full 75-inch extension. The ring light is mounted on top.

2. **Attach the Ring Light:** Mount the 22-inch LED ring light onto the top of the tripod stand. Ensure it is securely fastened. The ring light can rotate 360 degrees for optimal positioning.

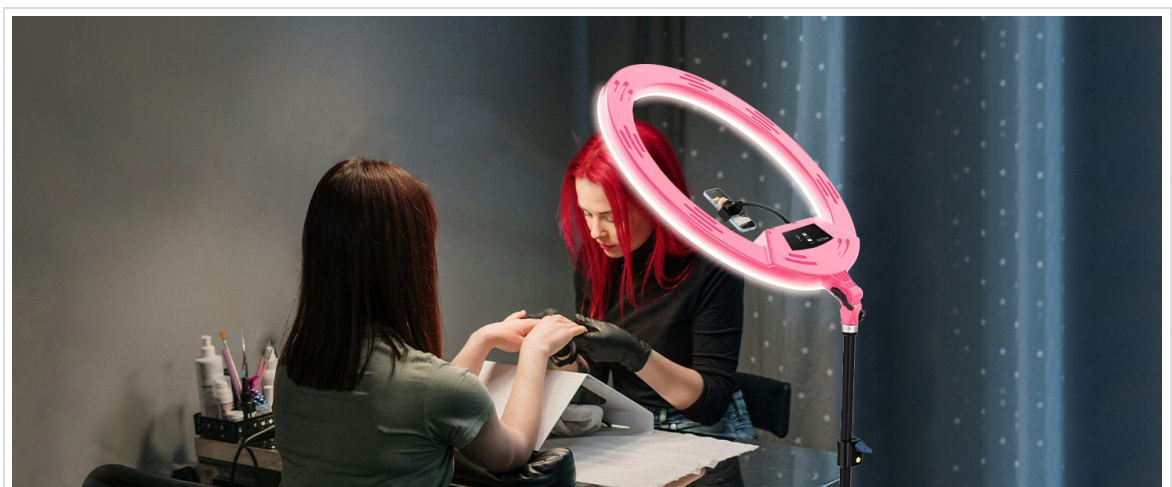


Image: A diagram illustrating the ring light's ability to tilt and rotate 180 degrees on its mount, allowing for flexible lighting angles.

3. **Install Device Holders:** Insert the phone clips (up to 3) and the tablet clip (compatible with 4-12.9" tablets) into the designated slots on the ring light. If using a DSLR camera, attach it via the cold shoe adapter.



Image: A close-up of the ring light's central panel, showing the three flexible phone holders and the camera mount in the middle, ready for device attachment.

4. **Connect Power:** Plug the power adapter into the ring light and then into a standard electrical outlet.

OPERATING INSTRUCTIONS

1. **Power On/Off:** Press the "ON/OFF" button on the control panel or the remote control to turn the light on or off.
2. **Adjust Brightness:** Use the "+" and "-" buttons on the control panel or the remote control to adjust the brightness from 1% to 100%. The LCD display will show the current brightness level.

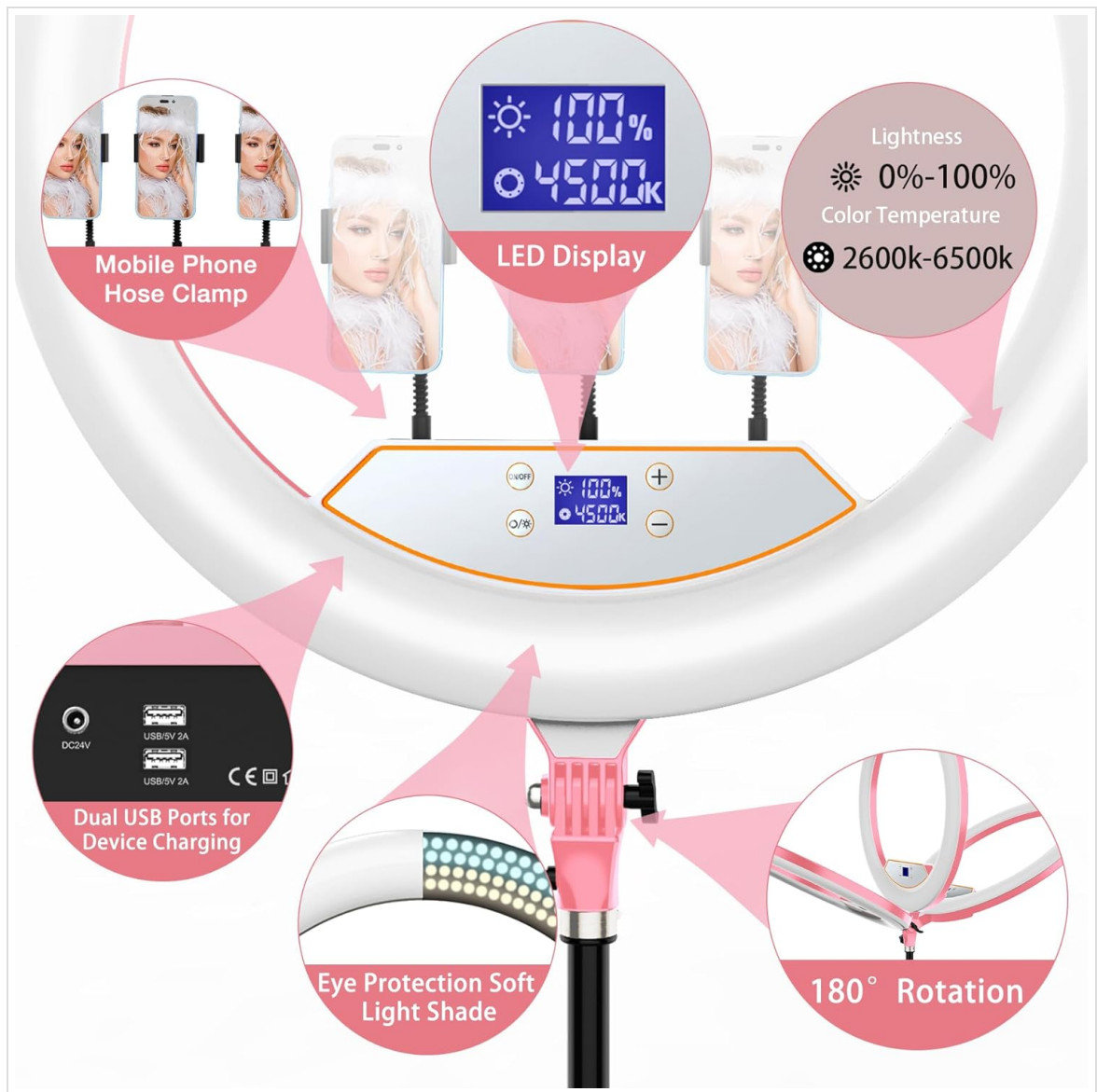


Image: The central control panel of the ring light, featuring an LCD screen that displays the current brightness percentage and color temperature in Kelvin. Buttons for power, mode, brightness adjustment, and color temperature adjustment are visible.

3. **Adjust Color Temperature:** Press the "O/*" button (mode button) on the control panel or the remote control to cycle through different color temperature modes (warm yellow, cool white, mixed). Use the "K+" and "K-" buttons on the remote to fine-tune the Kelvin temperature from 2700K to 6500K. The LCD display will show the current Kelvin temperature.

3 Light Modes & 10 Brightness Levels

512 PCS
LED Beads

2600-6500K
Bi-color

1%-100%
Dimming Range



6500K

4500K

2600K



Image: A visual representation of the ring light's three main color temperature settings (2600K warm, 4500K neutral, 6500K cool) and its 1% to 100% dimming capability, demonstrated with a model's portrait under each light.

4. Using Remote Controls:

- **IR Remote Control:** Point the remote control towards the ring light's sensor (within 5 meters/16.4 feet) to adjust brightness and color temperature.
- **Bluetooth Remote Control (CH-3):** Pair the Bluetooth remote with your smartphone or tablet to remotely trigger photos or start/stop video recording. Refer to your device's Bluetooth settings for pairing instructions.

Bluetooth Remote Control Operation Instructions



1 Suitable for Apple system and Android system



2 Indicator light strobe
Waiting for connection



3 Turn on Bluetooth
Click to Connect "AB Shutter3"



4 Press the photo key on
the Bluetooth remote control

Wireless Remote Control Operation Instructions

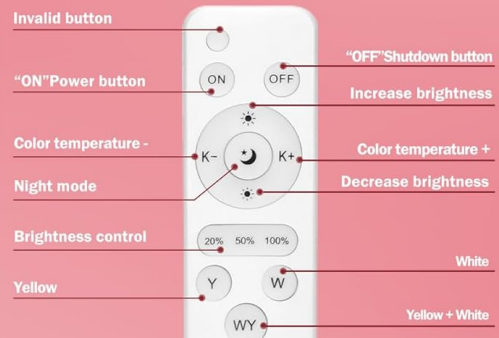


Image: A step-by-step guide on how to connect the Bluetooth remote control to both Android and iOS devices, alongside a detailed diagram of the IR remote control's buttons and their functions for adjusting light settings.

5. **USB Charging Ports:** The ring light features two USB charging ports (5V/2A) to power your devices during extended use.

FEATURES

- **Large 22-inch LED Ring Light:** Equipped with 512 LED beads for bright, even illumination.
- **Adjustable 75-inch Tripod:** Heavy-duty stand capable of holding up to 18 lbs (8kg), with 360° rotation for flexible lighting angles.
- **LCD Display:** Provides intuitive real-time feedback on brightness percentage and color temperature.
- **Dimmable & Color Adjustable:** Brightness from 1% to 100% and color temperature from 2700K (warm yellow) to 6500K (cool white).
- **Multiple Device Holders:** Includes 1 tablet holder (4-12.9" compatible), 1 cold shoe adapter for DSLR cameras, and 3 universal phone holders.
- **Dual USB Charging Ports:** Two 5V/2A USB ports for convenient device charging during use.
- **Remote Control Options:** Comes with an IR remote for light adjustments and a Bluetooth remote for camera shutter control.



Image: A composite image showcasing the versatility of the ring light in different settings such as professional photography, interviews, makeup tutorials, video blogging (vlogging), and live streaming, highlighting its adaptability for various content creation needs.

MAINTENANCE

- **Cleaning:** Use a soft, dry cloth to clean the ring light and tripod. Avoid abrasive cleaners or solvents.
- **Storage:** When not in use, disassemble the ring light and tripod and store them in the provided storage bag to protect them from dust and damage.
- **Handling:** Handle the ring light and tripod with care to prevent drops or impacts that could damage the LED beads or internal components.

TROUBLESHOOTING

Problem	Possible Cause	Solution
Light does not turn on.	Power cable not connected properly; power outlet issue.	Check all power connections. Try a different power outlet.
Remote control not working.	Low battery in remote; remote out of range; sensor blocked.	Replace remote battery. Ensure remote is within 5m and pointed at the sensor. Clear any obstructions.
Bluetooth remote not pairing.	Bluetooth not enabled on device; remote battery low.	Ensure Bluetooth is on and discoverable on your device. Replace remote battery.
Tripod is unstable.	Legs not fully extended or locked; uneven surface.	Ensure tripod legs are fully extended and all locking knobs are tightened. Place on a flat, stable surface.

SPECIFICATIONS

- **Product Dimensions:** 22"L x 11"W x 75"H
- **Item Weight:** 7.58 pounds
- **Item Model Number:** 22-P
- **Brand:** MACTREM
- **Connectivity Technology:** USB
- **Hardware Interface:** USB
- **LED Beads:** 512 PCS
- **Dimming Range:** 1%-100%
- **Color Temperature:** 2700K-6500K
- **Tripod Max Height:** 75 inches (190cm)
- **Tripod Load Capacity:** Up to 18 lbs (8kg)
- **USB Output:** 5V/2A (x2 ports)

WARRANTY AND SUPPORT

Your MACTREM 22-inch Ring Light comes with a 1-year free replacement warranty for faulty goods. For any questions or support needs, please contact our 7*24 Customer Service. We are available to assist you anytime.