



[Manuals.plus](#) /

› [Andoer](#) /

› Andoer Mini WiFi Action Camera L11 User Manual

Andoer L11

Andoer Mini WiFi Action Camera L11 User Manual

Model: L11

1. INTRODUCTION

This manual provides detailed instructions for the safe and effective operation of your Andoer Mini WiFi Action Camera L11. This compact digital video camera is designed for capturing high-quality 1080P video at 30 frames per second, featuring a 0.96-inch LCD screen, built-in rechargeable battery, motion detection, and versatile mounting options. Please read this manual thoroughly before using the device.



Image: Front and back view of the Andoer Mini WiFi Action Camera L11, showing the lens and the 0.96-inch LCD screen.

2. PACKAGE CONTENTS

Verify that all items listed below are included in your package. If any items are missing or damaged, please contact customer support.

- 1 x Andoer Mini WiFi Action Camera L11
- 1 x Protective Cover
- 1 x 1/4in Adapter Mount
- 1 x Back Clip Mount
- 1 x Card Reader
- 1 x Type-C Cable
- 1 x User Manual (this document)

3. PRODUCT FEATURES

- **High-Quality Video:** Records in 1080P at 30 frames per second, suitable for various applications including live broadcasting and video conferencing.

- **Compact and Portable:** Super mini size allows for easy portability and discreet placement.
- **Magnetic Body:** Features a magnetic base for secure attachment to smooth metal surfaces.
- **Seamless WiFi Connectivity:** Connects wirelessly to a dedicated app for live view and control.
- **Versatile Mounting:** Includes a 1/4-inch adapter mount and a back clip mount for diverse installation options.

APPLICATION SCENARIOS



Image: Examples of application scenarios for the camera, including parachute jumping, cycling, parent-child activities, and skiing.

Portable Video Recorder

Camp



Ride



Climb



Sports



Image: The camera being used as a portable video recorder in various outdoor activities like camping, cycling, climbing, and sports.

4. SETUP

4.1 Charging the Battery

Before first use, fully charge the camera's built-in 400mAh battery. Connect the provided Type-C cable to the camera's USB port and the other end to a standard USB power adapter (5V, $\geq 1A$). The charging indicator light will typically show the charging status and turn off or change color when fully charged.

4.2 Inserting a Memory Card

The camera supports TF (Micro SD) cards up to 128GB. Ensure the card is formatted to FAT32 for optimal performance. Gently insert the TF card into the designated slot until it clicks into place. To remove, press the card in slightly until it springs out.

Note: A memory card is required for recording video and taking photos.

4.3 Powering On/Off

- **To Power On:** Press and hold the Power button (usually marked with a power symbol) for a few seconds until the screen illuminates.

- **To Power Off:** Press and hold the Power button again for a few seconds until the screen turns off.

5. OPERATING INSTRUCTIONS

5.1 Basic Operation

The 0.96-inch color display provides visual feedback for modes and settings. Use the navigation buttons (if present, typically 'M' for Mode and another for selection/shutter) to cycle through options and confirm selections.

5.2 Recording Video

In video mode, press the Shutter/Record button to start recording. Press it again to stop. Videos are saved in AVI format at 1920x1080P resolution. The camera supports loop recording with 3-minute segments.

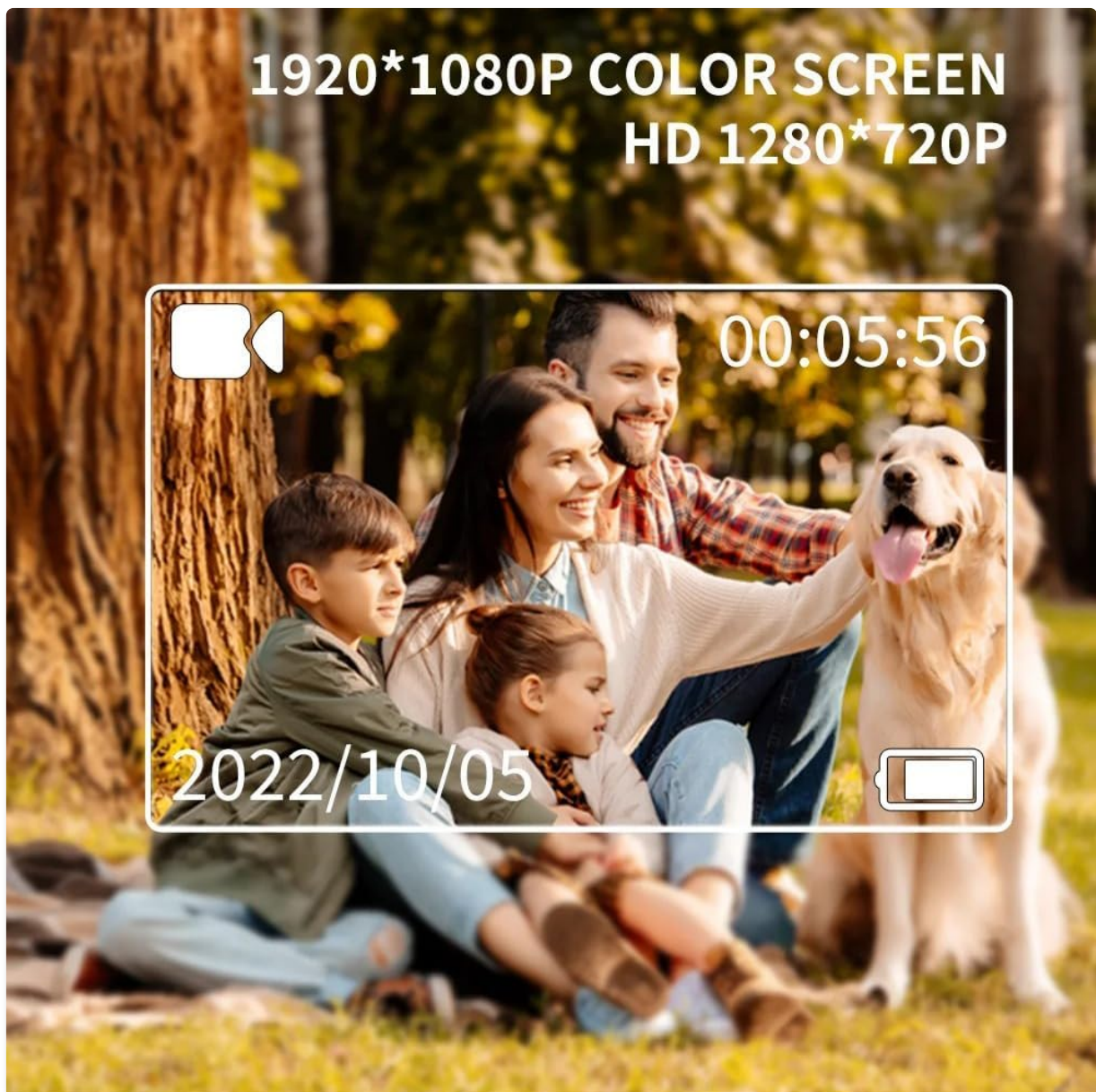


Image: The camera's screen displaying a family scene, indicating video recording at 1920x1080P resolution.

5.3 Taking Photos

Switch to photo mode using the Mode button. Press the Shutter button to capture a still image. Photos are saved in JPG format.

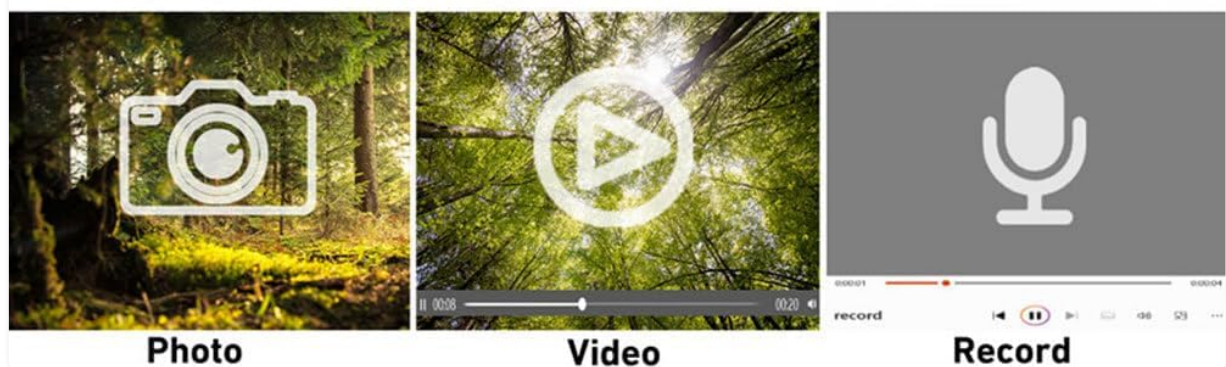


Image: Icons representing photo, video, and audio recording modes, illustrating the camera's ability to capture various moments.

5.4 Motion Detection

The camera features motion detection capabilities. Refer to the on-screen menu or the dedicated app for instructions on how to activate and configure this feature. When enabled, the camera will automatically begin recording when motion is detected within its field of view.

6. WiFi CONNECTIVITY

The Andoer L11 camera supports wireless WiFi connectivity for remote control and live viewing via a smartphone application. Follow these general steps:

1. Download the official Andoer camera app from your device's app store (iOS or Android).
2. Power on the camera and activate its WiFi mode (refer to the camera's on-screen menu).
3. On your smartphone, go to WiFi settings and connect to the camera's WiFi network (SSID and password will be displayed on the camera screen or in the app).
4. Open the Andoer app. You should now see a live view from the camera and be able to control recording and settings remotely.

WiFi Live View on Phone



Image: A smartphone displaying a live view from the camera, demonstrating the WiFi connectivity feature.

7. MOUNTING OPTIONS

The Andoer L11 offers flexible mounting solutions:

- **Magnetic Mount:** The camera body has a magnetic feature, allowing it to be securely attached to smooth metal surfaces like refrigerator doors or metal poles.
- **1/4-inch Adapter Mount:** Use the included 1/4-inch adapter mount to attach the camera to standard tripods, monopods, or other accessories with a 1/4-inch screw.
- **Back Clip Mount:** The back clip mount allows you to attach the camera to clothing, backpacks, or other thin objects for hands-free recording.

8. MAINTENANCE

- **Cleaning:** Use a soft, dry cloth to clean the camera body. For the lens, use a specialized lens cleaning cloth and solution. Avoid harsh chemicals.
- **Storage:** Store the camera in a cool, dry place away from direct sunlight and extreme temperatures.
- **Battery Care:** For long-term storage, charge the battery to about 50% every few months to maintain its health.

- **Firmware Updates:** Check the official Andoer website periodically for any available firmware updates to ensure optimal performance and new features.

9. TROUBLESHOOTING

| Problem | Possible Solution |
|---|--|
| Camera does not power on. | Ensure the battery is fully charged. Connect to a power source and try again. |
| Cannot record video/take photos. | Check if a TF card is inserted and properly formatted. Ensure there is sufficient storage space. |
| WiFi connection issues. | Ensure WiFi is enabled on the camera and your smartphone. Restart both devices. Verify the correct app is installed. |
| Poor video/image quality. | Ensure the lens is clean. Check lighting conditions. Verify camera settings are correct (e.g., resolution). |
| Camera freezes or becomes unresponsive. | Perform a soft reset by holding the power button until it turns off, then restart. If persistent, remove and reinsert the memory card. |

10. SPECIFICATIONS

| Feature | Detail |
|-------------------------|------------------------------|
| Machine Type | L11 |
| Lens Angle | 140 degrees |
| TFT Display | 0.96 inches Color Display |
| Video Resolution | 1920 * 1080P |
| Battery | 400mAh |
| Video File Format | AVI |
| Photo Format | JPG |
| Loop Video | 3 minutes |
| Recording File Format | WAV (Audio) |
| Working Humidity | 30% |
| Operating Temperature | -25 to +75°C (-13 to +167°F) |
| Power Supply | USB voltage 5V, current ≥1A |
| Memory Card | TF card, supports up to 128G |
| Connectivity Technology | Wi-Fi |
| Form Factor | Compact |

| Feature | Detail |
|--------------------|---------------------------|
| Item Weight | 4.2 ounces (approx. 119g) |
| Package Dimensions | 3.94 x 2.36 x 1.97 inches |

11. SAFETY INFORMATION

- Do not expose the camera to extreme temperatures outside the specified operating range (-25°C to +75°C).
- Avoid operating the camera in humidity levels exceeding 30%.
- Keep the device away from water and other liquids unless explicitly stated as waterproof.
- Do not attempt to disassemble or modify the camera, as this will void the warranty and may cause damage.
- Use only the specified power supply (USB 5V, ≥1A) for charging.
- Keep out of reach of children.