

MICTUNING P1s Wireless 8 Gang Switch Panel and C2 Curved RGBW Rock Lights

MICTUNING P1s Wireless 8 Gang Switch Panel and C2 Curved RGBW Rock Lights User Manual

Model: P1s, C2

Brand: MICTUNING

INTRODUCTION

This manual provides instructions for the MICTUNING P1s Wireless 8 Gang Switch Panel and the accompanying C2 Curved RGBW Rock Lights. Please read carefully before installation and operation to ensure proper use and longevity of the product.



An overview image displaying the MICTUNING P1s Wireless 8 Gang Switch Panel alongside the C2 Curved RGBW Rock Lights and their packaging.

PRODUCT COMPONENTS

The package typically includes the following components:

- MICTUNING P1s Wireless 8 Gang Switch Panel
- Control Box
- C2 Curved RGBW Rock Lights (quantity may vary, e.g., 8 pieces)
- Switch Panel Holder
- Type-C Charging Cable
- Wiring Harnesses and various installation accessories



A detailed view of the MICTUNING P1s Wireless 8 Gang Switch Panel, its control box, various wiring components, and a sheet of customizable switch labels.

SETUP AND INSTALLATION

Wireless Switch Panel Setup

The P1s switch panel operates wirelessly, eliminating the need for direct wiring between the panel and the control box. This allows for flexible placement and use as a remote control.

A dedicated holder is provided for convenient placement and removal of the switch panel within your vehicle.



NO CORDS ATTACHED

CORDLESS PANEL FLEXIBLE LIKE A REMOTE CONTROL

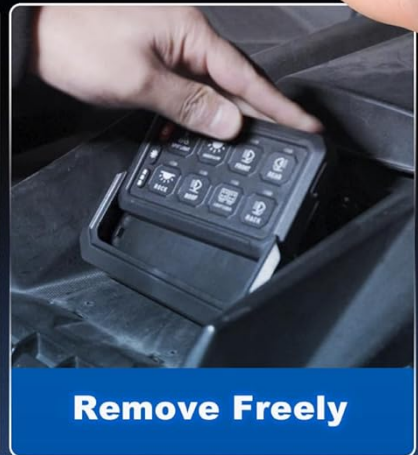
Ideal Distance up to **165FT**



**Wireless,
Cordless Control**



**Turn on Lights
in Advance**



Remove Freely



INSTALLATION TIP: Put antenna on the right A pillar of the car

An image illustrating the wireless capability of the MICTUNING P1s switch panel, showing it being used as a remote control up to 165 feet from the vehicle.

Installation Tip: For optimal wireless performance and signal reception, it is recommended to position the antenna on the right A-pillar of the vehicle.

Initial Charging

Before the first use, ensure the wireless switch panel is fully charged using the provided Type-C charging cable.

- The charging indicator light will display red while the device is charging.
- The indicator will turn green once the battery is fully charged.
- A full charge typically takes 2-3 hours and provides approximately 14 days of standby time or 8 hours of continuous use.



LONG LASTING BATTERY



**2-3 HOURS CHARGE
FOR 14 DAYS STANDBY TIME**



A close-up image showing the MICTUNING P1s Wireless Switch Panel being charged via a Type-C cable, with indicators for charging status and battery level.

C2 RGBW Rock Lights Installation

The C2 RGBW Rock Lights are designed for vehicle underbody or accent lighting. For detailed wiring diagrams, mounting instructions, and specific installation procedures for the C2 Rock Lights, please refer to the separate C2 Rock Lights manual or the MICTUNING official website.



An image displaying the MICTUNING C2 RGBW LED Rock Lights kit, including eight light pods, a control box, and wiring.

OPERATING INSTRUCTIONS

Switch Panel Functions

Each of the 8 gangs on the switch panel can be customized to control various accessories with different operational modes:

- **Constant Mode:** Provides continuous power to connected accessories, suitable for items like fog lights or auxiliary driving lights.
- **Momentary Mode:** Activates the accessory only while the button is pressed, ideal for functions such as a horn or momentary warning lights.
- **Strobe Mode:** Causes connected lights to flash, useful for emergency or warning applications.



An image demonstrating the customization capabilities of the MICTUNING P1s switch panel, showing options for constant light, strobe, and momentary functions, along with brightness levels and color choices.

Backlight and Brightness Adjustment

The switch panel features customizable backlighting with 8 color options. These colors can be displayed in various modes, including Gradient, Jump, and Breathing effects.

Additionally, there are 5 levels of brightness adjustment for the panel's display, allowing you to optimize visibility according to ambient light conditions.

C2 RGBW Rock Lights Control (via App)

The C2 RGBW Rock Lights are controlled wirelessly through the dedicated "Mictuning" mobile application, available for download on your smartphone.

- **Bluetooth Connection:** The system utilizes an advanced Broadcom chip to ensure a stable and quick Bluetooth connection between your mobile device and the rock lights' control module.
- **App Features:** The "Mictuning" app allows you to easily customize the colors of your rock lights and control multiple sets simultaneously (up to 8 sets of 4pcs or 8pcs rock lights).

The C2 RGBW lights are designed to produce pure colors and include a separate pure white light, ensuring vibrant

and clear illumination.

1 SET MICTUNING C2 ROCK LIGHTS = 5 SET OTHER ROCK LIGHTS

	MICTUNING C2	OTHERS
RATED POWER	5 W/pod	2~2.5 W/pod
MEASURED POWER	4 W/pod	0.5~1.5 W/pod
LUMEN	320lm/pod	< 64lm/pod
	2560lm/ 8pods	< 500lm/ 8pods
LED CHIP		
PURITY		
SCENE		

Say goodbye to mottled color, Don't be fooled by other

An image highlighting the pure color output and wide illumination angle of the MICTUNING C2 RGBW Rock Lights, emphasizing their 4-in-1 LED chip technology.

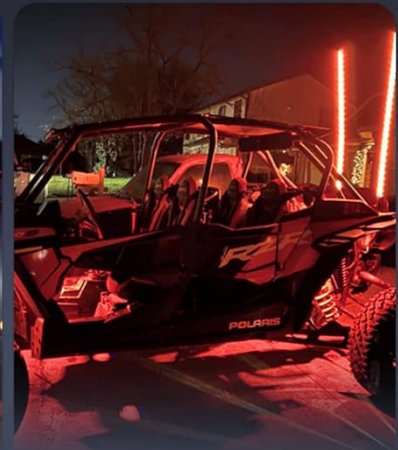
MAKE YOUR LIFE MORE COLORFUL



PICKUP



TRUCK



UTV



CAR



JXXP



MARINE

A collage of images showing the MICTUNING C2 RGBW Rock Lights installed on different types of vehicles, including pickups, trucks, UTVs, cars, Jeeps, and marine vessels, demonstrating their versatile application.

MAINTENANCE

Charging the Switch Panel

Recharge the wireless switch panel promptly when the battery indicator shows low power. Always use the provided Type-C charging cable to ensure compatibility and prevent damage.

Cleaning

To clean the switch panel and rock lights, gently wipe them with a soft, damp cloth. Avoid using abrasive cleaners, harsh chemicals, or solvents, as these can damage the product's finish or electronic components.

TROUBLESHOOTING

Switch Panel Not Responding

- Ensure the switch panel is adequately charged. Check the battery indicators for current power level.

- Verify that the main control box is powered on and correctly installed with all connections secure.
- Check the distance between the wireless switch panel and the control box. The ideal operational range is up to 165 feet.
- Ensure there are no significant physical obstructions (e.g., thick metal barriers) blocking the wireless signal path.

Bluetooth Connection Issues (C2 Rock Lights)

- Confirm that Bluetooth is enabled on your mobile device.
- Make sure the "Mictuning" app is installed, updated to the latest version, and has necessary permissions.
- Try restarting the app and attempting to reconnect.
- Ensure the C2 Rock Lights control module is receiving power.

Lights Not Functioning

- Inspect all wiring connections for both the C2 Rock Lights and the main control box to ensure they are secure and correctly wired.
- Verify the power supply to the control box is active and sufficient.
- Ensure the correct operational mode (Constant, Momentary, Strobe) is selected for the specific switch on the panel.

SPECIFICATIONS

MICTUNING P1s Wireless 8 Gang Switch Panel

- **Wireless Range:** Up to 165 feet (under ideal conditions)
- **Battery Life:** Approximately 14 days standby, 8 hours continuous use
- **Charging Time:** 2-3 hours (via Type-C port)
- **Backlight Colors:** 8 options (Gradient, Jump, Breathing modes)
- **Brightness Levels:** 5 adjustable levels

MICTUNING C2 RGBW LED Rock Lights

- **LED Type:** RGBW 4-in-1 Chip
- **Rated Power per Pod:** 5 W
- **Measured Power per Pod:** 4 W
- **Lumen per Pod:** 320 lm
- **Total Lumen (8 pods):** 2560 lm
- **Beam Angle:** 160° Wider
- **Control:** Bluetooth via "Mictuning" App

BRIGHTEST & PUREST COLOR

Unique WATER DROP design, make the light output more UNIFORM

160° WIDER



The more you see, the safer you are

PURE COLOR
RGBW 4-IN-1 CHIP

40W
HIGH POWER


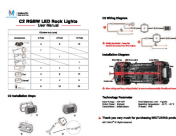


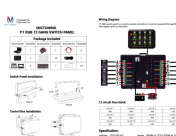
2560LM
SUPER BRIGHT

A table comparing the specifications of MICTUNING C2 Rock Lights, such as rated power, measured power, lumen output, and LED chip type, against other rock light products, highlighting the C2's superior performance.

WARRANTY AND SUPPORT

For detailed warranty information, product registration, and technical support, please visit the official MICTUNING website or contact MICTUNING customer service directly. Specific warranty terms and conditions are not provided within this user manual.

Related Documents - P1s Wireless 8 Gang Switch Panel and C2 Curved RGBW Rock Lights

	<p>MICTUNING Q1 RGB Rock Lights FAQ</p> <p>Frequently asked questions and answers regarding the MICTUNING Q1 RGB Rock Lights, covering app connectivity, Bluetooth signals, color control, flashing lights, and power status.</p>
	<p>MICTUNING C2 RGBW LED Rock Lights User Manual</p> <p>Comprehensive user manual for the MICTUNING C2 RGBW LED Rock Lights, covering installation, wiring, technical specifications, and troubleshooting.</p>
	<p>MICTUNING P1s APP Control Switch Panel User Manual</p> <p>Detailed user manual for the MICTUNING P1s APP Control Switch Panel. Covers installation guides for switch panels and control boxes, comprehensive wiring diagrams for 8-gang and 12-gang configurations, fuse block specifications, control mode settings (Constant, Momentary, Strobe), Bluetooth app integration, backlight customization, and frequently asked questions. Essential guide for automotive accessory installation.</p>
	<p>MICTUNING C3 RGBW LED Rock Lights - Installation and User Manual</p> <p>Comprehensive guide for MICTUNING C3 RGBW LED Rock Lights, covering installation, wiring, control box operation, Bluetooth APP features, and troubleshooting. Enhance your vehicle with customizable multi-color lighting.</p>
	<p>MICTUNING Q1 RGBW LED Rock Lights User Manual and Installation Guide</p> <p>Comprehensive user manual and installation guide for MICTUNING Q1 RGBW LED Rock Lights. Includes product specifications, installation steps, wiring diagrams, and accessory details for 4-pod and 8-pod kits.</p>
	<p>MICTUNING P1 RGB 12 Gang Switch Panel User Guide</p> <p>Comprehensive guide for the MICTUNING P1 RGB 12 Gang Switch Panel, covering installation, wiring, lighting modes, and troubleshooting.</p>