

Dorman 540-850

Dorman 540-850 Suspension Control Arm Bushing: Installation and Maintenance Manual

Model: 540-850

1. INTRODUCTION

This manual provides essential information for the Dorman 540-850 Front Passenger Side Lower Rearward Suspension Control Arm Bushing. It covers product details, compatibility, installation guidelines, maintenance, and specifications. This bushing is designed as a direct replacement for the original equipment on specific Subaru vehicles, ensuring proper fit and performance.

2. SAFETY INFORMATION

Warning: Automotive repair can be dangerous. Always follow proper safety procedures and use appropriate tools. If you are not experienced with automotive repairs, it is recommended to seek professional assistance from a qualified mechanic.

- Always wear appropriate personal protective equipment (PPE), including safety glasses and gloves.
- Ensure the vehicle is securely supported on jack stands before working underneath it. Never rely solely on a jack.
- Disconnect the vehicle's battery before performing any electrical work.
- Refer to the vehicle manufacturer's service manual for specific torque specifications and procedures.
- Keep children and pets away from the work area.

3. PRODUCT OVERVIEW

The Dorman 540-850 is a front passenger side lower rearward suspension control arm bushing. It is engineered to provide a reliable replacement for worn or damaged original equipment bushings, restoring proper suspension function and handling.



Figure 3.1: Dorman 540-850 Suspension Control Arm Bushing. This image shows the complete bushing assembly, featuring the metal housing and the rubber insert, designed for the front passenger side lower rearward position.

Key Features:

- **Direct Replacement:** Designed to fit and perform like the original equipment bushing.
- **Reliable Fit:** Precision-engineered to match the design and dimensions of original components.
- **Durable Construction:** Manufactured to strict standards using sturdy, safe materials for longevity.
- **Rigorously Tested:** Undergoes thorough quality control measures to ensure performance and durability.

4. COMPATIBILITY

This Dorman 540-850 suspension control arm bushing is compatible with the following vehicles:

- **Subaru Forester:** 2001, 2002

Note: Always verify fitment for your specific vehicle make, model, and trim level before installation.

5. INSTALLATION GUIDELINES

The following are general guidelines for replacing a suspension control arm bushing. Specific procedures may vary by vehicle. Refer to your vehicle's service manual for detailed instructions.

Required Tools (Typical):

- Vehicle jack and jack stands
- Wheel chocks
- Socket set and wrenches
- Torque wrench

- Bushing press tool or suitable alternative (e.g., ball joint press, large C-clamp with appropriate adapters)
- Pry bar
- Penetrating oil
- Wire brush

Installation Steps (General):

1. **Prepare Vehicle:** Park the vehicle on a level surface, engage the parking brake, and place wheel chocks on the wheels that will remain on the ground. Loosen the lug nuts on the wheel corresponding to the bushing to be replaced.
2. **Lift and Secure:** Jack up the vehicle and place it securely on jack stands. Remove the wheel.
3. **Access Control Arm:** Locate the lower rearward control arm and the bushing to be replaced. It may be necessary to remove other suspension components (e.g., sway bar link, ball joint) to gain access or allow the control arm to move freely.
4. **Remove Old Bushing:**

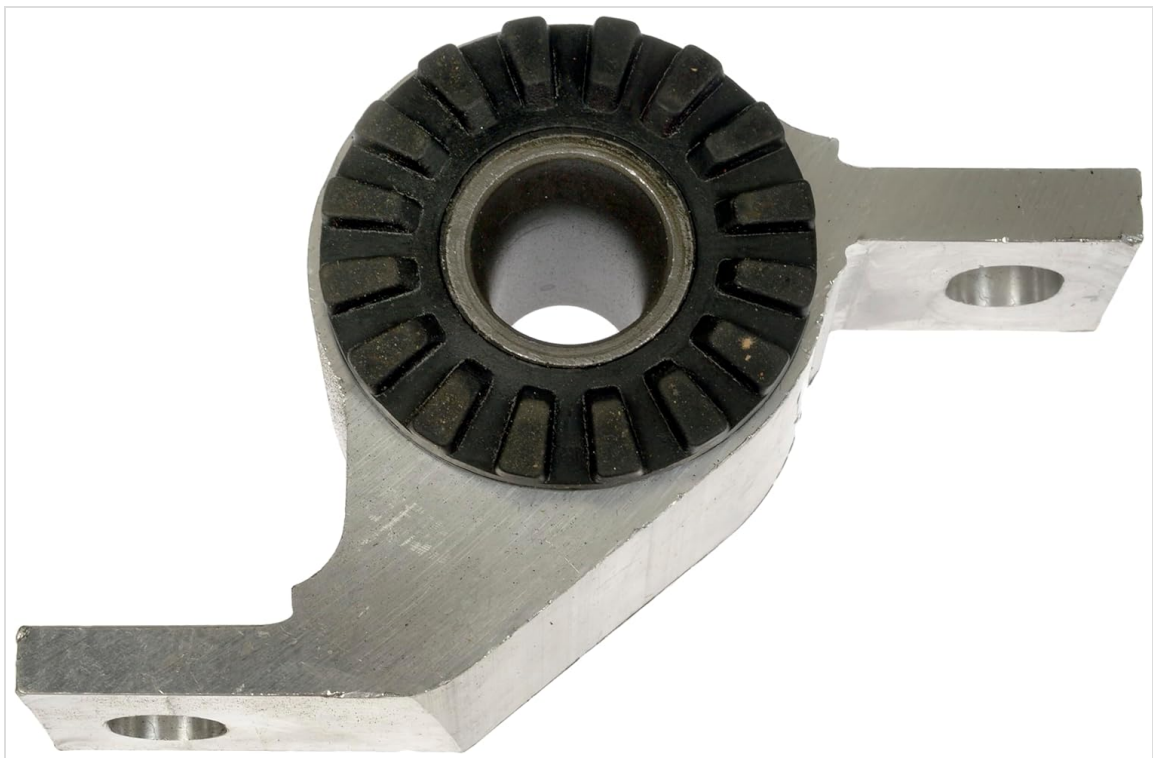


Figure 5.1: Side view of the Dorman 540-850 bushing, showing the mounting bracket and the rubber bushing insert. This perspective helps in understanding how the bushing is seated within the control arm.

Using a bushing press tool or a suitable alternative, carefully press out the old bushing from the control arm. This may require significant force. Clean the control arm's bushing bore thoroughly with a wire brush to remove any rust or debris.

5. **Install New Bushing:**



Figure 5.2: Angled view of the Dorman 540-850 bushing, highlighting the robust construction and precise fitment. This view is useful for identifying the orientation during installation.

Apply a thin layer of appropriate lubricant (e.g., silicone grease, not petroleum-based) to the outer surface of the new bushing and the inner surface of the control arm bore. Using the bushing press tool, carefully press the new Dorman 540-850 bushing into the control arm. Ensure it is seated squarely and fully.



Figure 5.3: Top-down view of the Dorman 540-850 bushing, showing the width and overall profile. This helps in confirming the correct dimensions and alignment during the pressing process.

6. **Reassemble:** Reinstall any removed suspension components. Tighten all fasteners to the vehicle manufacturer's specified torque values.
7. **Final Steps:** Reinstall the wheel and tighten lug nuts to specification. Lower the vehicle to the ground and perform a final torque check on all fasteners.

Important: After any suspension work, it is highly recommended to have a professional wheel alignment performed to ensure proper vehicle handling and tire wear.

6. MAINTENANCE

Suspension bushings are generally maintenance-free components. However, regular inspection of your vehicle's suspension system is recommended to identify any signs of wear or damage.

- **Visual Inspection:** Periodically inspect the bushings for cracks, tears, or excessive play.
- **Listen for Noises:** Clunking, squeaking, or rattling noises from the suspension can indicate worn bushings.
- **Check Handling:** Poor handling, steering looseness, or uneven tire wear can also be symptoms of worn suspension components.

If any issues are detected, consult a qualified mechanic for diagnosis and repair.

7. TROUBLESHOOTING COMMON ISSUES

If you experience issues after replacing a control arm bushing, consider the following:

- **Persistent Noise:** Ensure all fasteners are tightened to specification. Check for proper seating of the bushing and other suspension components.
- **Poor Handling/Alignment Issues:** A professional wheel alignment is crucial after suspension work. Incorrect installation or damaged adjacent components can also contribute.
- **Premature Wear:** Ensure the correct bushing was installed for the application. Over-tightening or under-tightening fasteners can affect bushing lifespan.

For complex issues, professional diagnosis is recommended.

8. SPECIFICATIONS

Attribute	Value
Manufacturer	Dorman Products
Brand	Dorman
Item Weight	1.9 pounds
Package Dimensions	5.75 x 4.63 x 3.63 inches
Item Model Number	540-850
Manufacturer Part Number	540-850
OEM Part Number	20201FC100
What's in the Box	1 Bushing

9. WARRANTY AND SUPPORT

Dorman products are manufactured to high-quality standards. For specific warranty information or technical support, please refer to the official Dorman website or contact Dorman customer service directly. Keep your purchase receipt as proof of purchase.

Dorman Website: www.dormanproducts.com

© 2024 Dorman Products. All rights reserved.

This manual is for informational purposes only. Dorman Products is not responsible for any damage or injury resulting from improper installation or use of this product.