

Xtrem Bots Bobby

Xtrem Bots Programmable Robot Dog Bobby User Manual

Model: Bobby | Brand: Xtrem Bots

1. INTRODUCTION

This manual provides comprehensive instructions for the setup, operation, and maintenance of your Xtrem Bots Programmable Robot Dog Bobby. This interactive robot dog offers remote control functionality, programmable actions, realistic sounds, and expressive LED lights, designed to engage users aged 5 and above.

2. SAFETY INFORMATION

- **Age Recommendation:** Suitable for children aged 5 years and older.
- **Battery Safety:** Do not mix old and new batteries. Do not mix alkaline, standard (carbon-zinc), or rechargeable (nickel-cadmium) batteries. Insert batteries with correct polarity. Remove batteries if the product is not used for an extended period.
- **Choking Hazard:** This product contains small parts. Not suitable for children under 3 years.
- **Supervision:** Adult supervision is recommended during play.

3. PACKAGE CONTENTS

Please ensure all items are present in the package:

- 1 x Xtrem Bots Robot Dog Bobby
- 1 x Remote Control
- 1 x USB Charging Cable (for robot)
- Instruction Manual



Image: The product box for Xtrem Bots Bobby Robot Dog, displaying the robot and its remote control.

4. SETUP

4.1 Battery Installation

1. **Robot Dog Bobby:** The robot dog comes with a built-in rechargeable battery. Connect the provided USB charging cable to the charging port on the robot and to a compatible USB power source. The LED indicator will show charging status.
2. **Remote Control:** The remote control requires 2 x AAA batteries (not included). Open the battery compartment on the back of the remote control using a small screwdriver. Insert the batteries, ensuring correct polarity (+/-). Close the compartment securely.

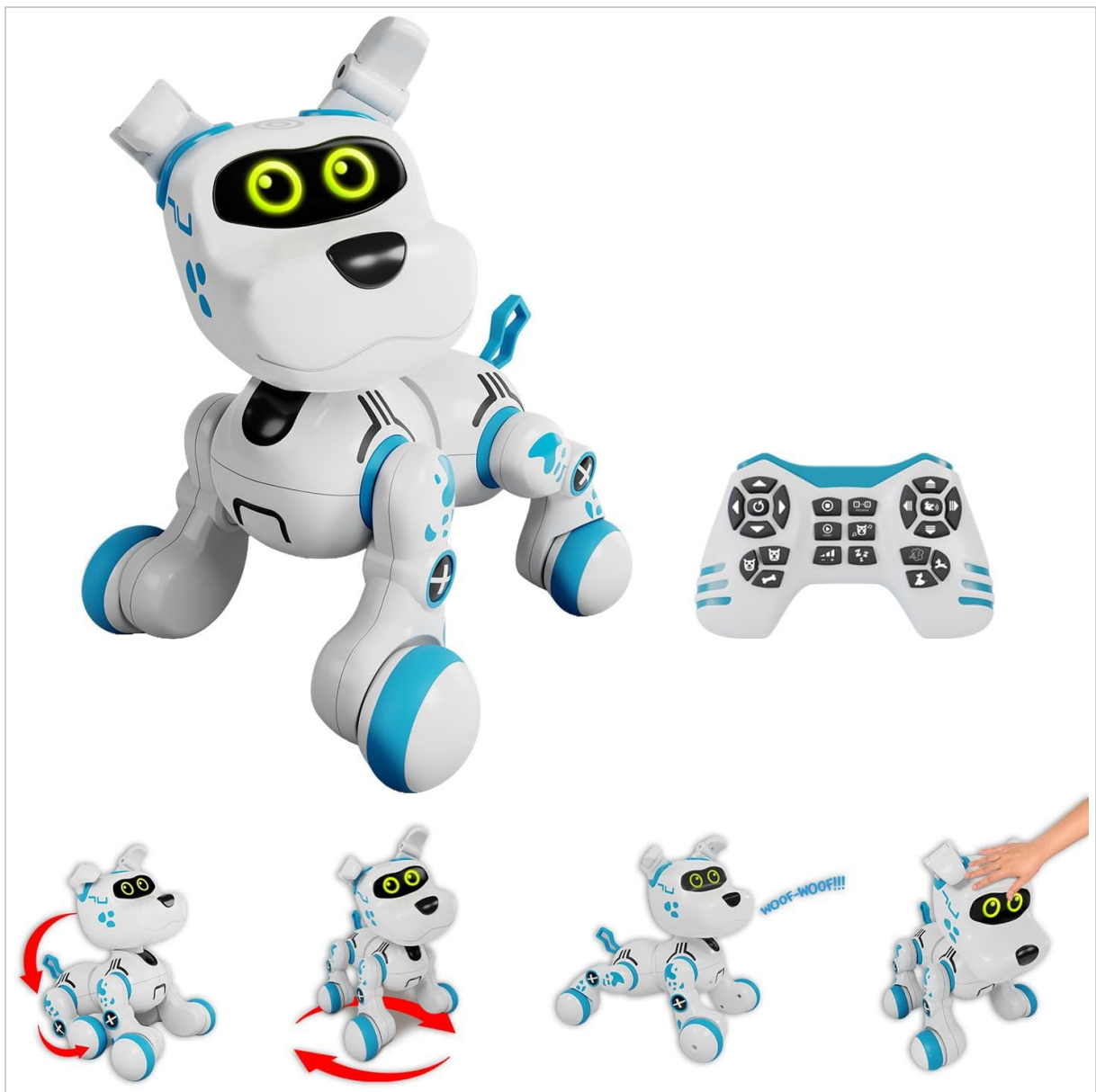


Image: The Xtrem Bots Bobby Robot Dog and its remote control, illustrating the components requiring power.

4.2 Powering On/Off

- **Robot Dog:** Locate the power switch on the robot (usually on its underside or back). Slide it to the 'ON' position. The robot's eyes will light up, indicating it is powered on.
- **Remote Control:** Press the power button on the remote control. An indicator light on the remote will illuminate.

4.3 Pairing the Remote Control

The robot and remote control should automatically pair when both are powered on. If they do not connect, turn both devices off and then on again. Ensure there are no obstructions between the remote and the robot.

5. OPERATING INSTRUCTIONS

5.1 Remote Control Functions

The remote control allows for various movements and actions. Familiarize yourself with the buttons:

- **Directional Buttons:** Control forward, backward, left, and right movements.

- **Action Buttons:** Trigger specific pre-programmed actions such as sitting, lying down, or performing tricks.
- **Sound Button:** Activates various robot dog sounds, including barking.
- **Light Button:** Controls the LED lights on the robot's eyes and body.
- **Program Button:** Initiates and confirms programming sequences.

CONTROL OR PROGRAM

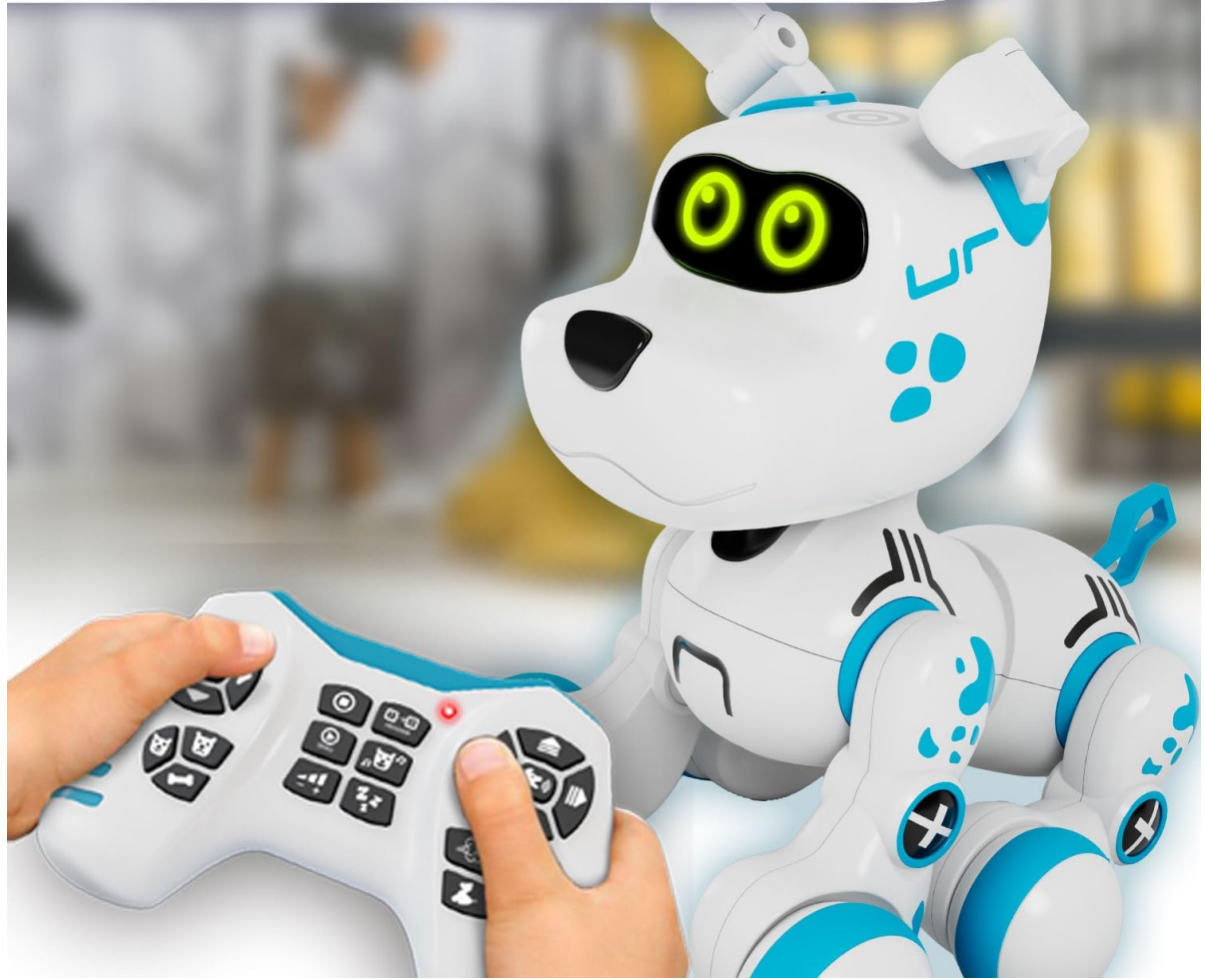


Image: A child's hands holding the remote control, directing the Xtrem Bots Bobby Robot Dog.

5.2 Programmable Actions

The Bobby Robot Dog can be programmed with up to 20 sequential actions:

1. Press the **Program Button** on the remote control to enter programming mode. The robot's eyes may change color or blink to indicate it's ready.
2. Input your desired sequence of movements and actions using the directional and action buttons on the remote. Each button press will be recorded.
3. Press the **Program Button** again to save and exit programming mode.
4. To execute the programmed sequence, press the dedicated **Play Program Button** (or the Program button again, depending on the remote design). The robot will perform the recorded actions.

5.3 Interactive Features

- **Sounds and Lights:** Bobby emits various robotic sounds and barks, accompanied by dynamic LED lights in its eyes and body, enhancing its expressive capabilities.
- **Movement:** Bobby can walk, turn, sit, and lie down, mimicking a real dog's movements.

SITS OR LIES DOWN



Image: The Xtrem Bots Bobby Robot Dog in a sitting position, demonstrating one of its interactive movements.

***SOUNDS LIKE A
REAL DOG***



Image: The Xtrem Bots Bobby Robot Dog with a 'Woof-Woof' speech bubble, indicating its sound capabilities.

6. MAINTENANCE

- **Cleaning:** Wipe the robot and remote control with a soft, dry cloth. Do not use harsh chemicals or abrasive cleaners. Avoid exposing the product to water or excessive moisture.
- **Storage:** Store the robot and remote control in a cool, dry place away from direct sunlight when not in use.
- **Battery Care:** For optimal battery life, fully charge the robot's internal battery before first use and after each play session. If storing the robot for an extended period, ensure the battery is partially charged (around 50%) and recharge every few months to prevent deep discharge. Remove AAA batteries from the remote control if it will not be used for a long time.

7. TROUBLESHOOTING

Problem	Possible Cause	Solution
Robot does not turn on.	Low or depleted battery; Power switch off.	Charge the robot's battery; Ensure power switch is in 'ON' position.

Problem	Possible Cause	Solution
Remote control not working.	Low or incorrectly installed batteries; Not paired.	Replace AAA batteries, check polarity; Re-pair remote with robot (power cycle both).
Robot not responding to commands.	Out of range; Interference; Not paired.	Move closer to the robot; Avoid obstacles; Re-pair remote.
Programmed actions are incorrect.	Incorrect sequence recorded.	Clear the program and re-record the desired sequence of actions.

8. SPECIFICATIONS

- **Model Name:** Bobby
- **Product Dimensions (L x W x H):** 26 x 23 x 27.5 cm
- **Weight:** 1.1 kilograms
- **Recommended Age:** 5 years and up
- **Educational Value:** Develops STEM skills, logical thinking, and motor skills through interactive play.
- **Main Material:** Plastic
- **Robot Power:** Integrated rechargeable battery (included)
- **Remote Control Power:** 2 x AAA batteries (not included)
- **Manufacturer Reference:** 8436598038521

9. WARRANTY AND SUPPORT

Xtrem Bots products are manufactured to high-quality standards. For information regarding warranty coverage, please refer to the warranty card included with your product or visit the official Xtrem Bots website. For technical support or inquiries, please contact Xtrem Bots customer service through their official channels.