

XTU SV-32YW

XTU Trail Camera SV-32YW User Manual

Your guide to setting up, operating, and maintaining your XTU WiFi Bluetooth Trail Camera.

1. INTRODUCTION AND OVERVIEW

The XTU SV-32YW Trail Camera is designed for wildlife monitoring, outdoor security, and hunting applications. It features high-quality 2.7K video and 48MP image capture, motion activation, and robust weather resistance. With integrated Wi-Fi and Bluetooth, you can easily manage settings and media directly from your smartphone.



Figure 1: XTU Trail Camera SV-32YW

2. WHAT'S IN THE BOX

Your XTU Trail Camera package includes the following items:

- 1 x WiFi wildlife camera
- 1 x Installation strap
- 1 x USB cable
- 1 x Metal bracket
- 1 x Screwdriver
- 4 x Screws
- 4 x Rubber plugs
- 1 x Metal base
- 1 x 64GB SD card
- 1 x User manual

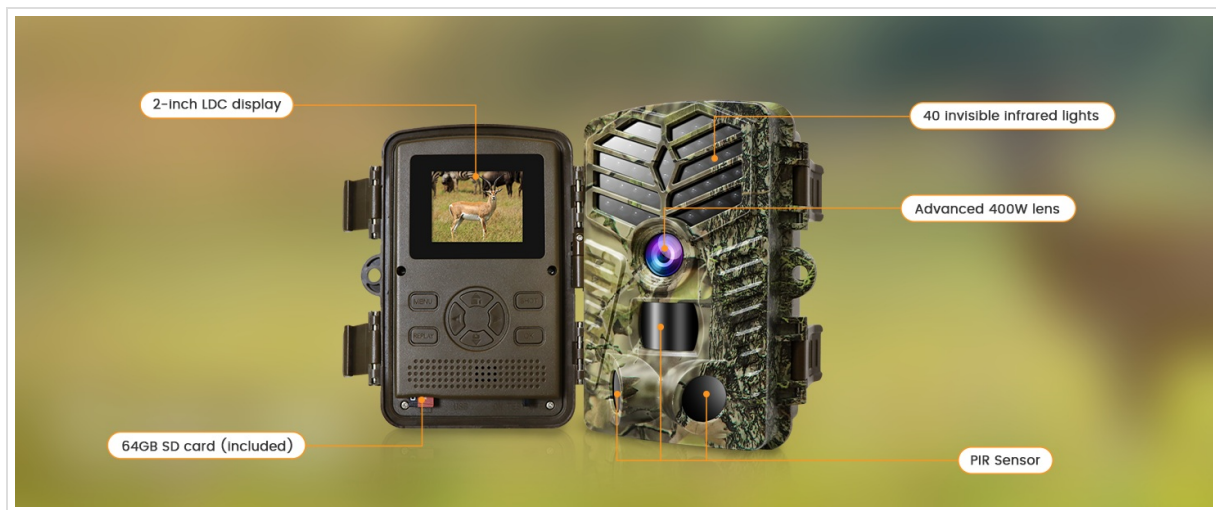


Figure 2: Package Contents

3. SETUP GUIDE

3.1 Battery and SD Card Installation

The camera requires 8 x 1.5V AA batteries (not included). Ensure correct polarity when inserting. The included 64GB Micro SD card should be inserted into the designated slot. It is recommended to format the SD card before first use to ensure optimal performance.

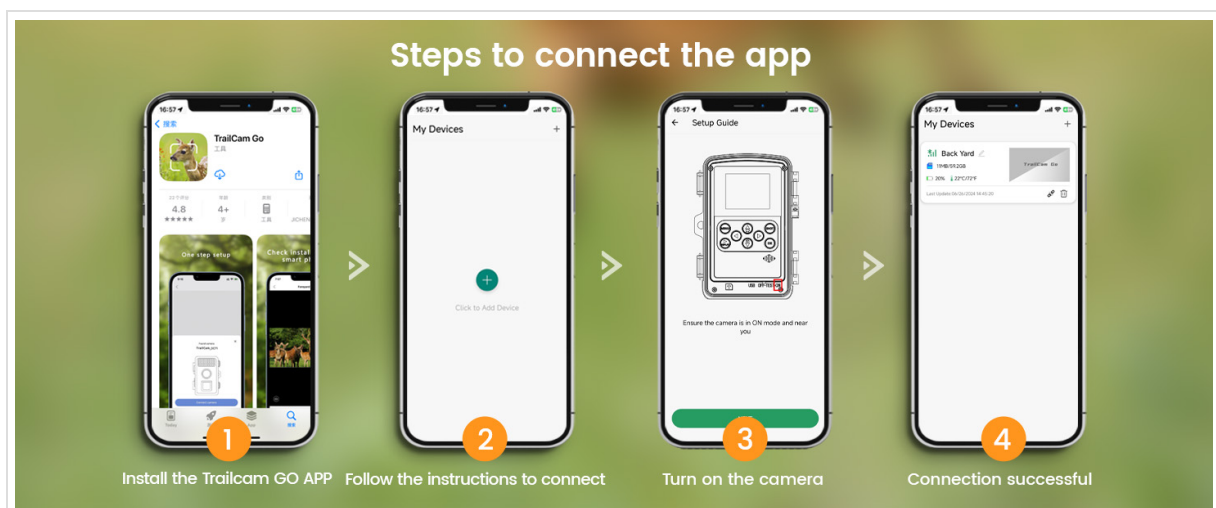


Figure 3: Quick Installation Steps

3.2 Initial Camera Configuration

Switch the camera to the "TEST" (middle) position to access the menu. Navigate through the settings using the control buttons. It is crucial to format the Micro SD card before using the camera for the first time.

Video 1: How to use this XTU 2.7 wildlife camera (Seller Video). This video demonstrates the initial setup, including SD card formatting and basic menu navigation.

4. OPERATING INSTRUCTIONS

4.1 Setting Operating Mode

The camera offers various operating modes. For power efficiency, it is recommended to select "Motion Detection" mode. You can also set a "Working Time" to define specific hours for the camera to record.

4.2 Photo and Video Settings

Configure your desired photo and video parameters:

- **Photo Resolution:** Recommended at 48MP for clearest images.
- **Video Resolution:** Recommended at 2.7K for high-quality video.
- **Photo Burst:** Set up to 5 consecutive shots per trigger.
- **Video Length:** Adjust video recording duration. Longer videos consume more power.
- **Audio Recording:** Enable or disable audio capture.



Figure 4: High-Quality Video and Image

5. MOTION DETECTION AND NIGHT VISION

5.1 Motion Detection

The camera features 3 PIR sensors with a 0.2-second trigger speed and a 120° wide detection angle, covering up to 25 meters (75 feet). Adjust PIR sensitivity (Low, Middle, High) based on environmental temperature to prevent false triggers. Set to Low in high-temperature environments and High in low-temperature environments.

0.2s trigger speed

Equipped with 3 PIR sensors, the detection range reaches 120° and the detection distance is 25 m, the motion detection is triggered quickly within 2 seconds.

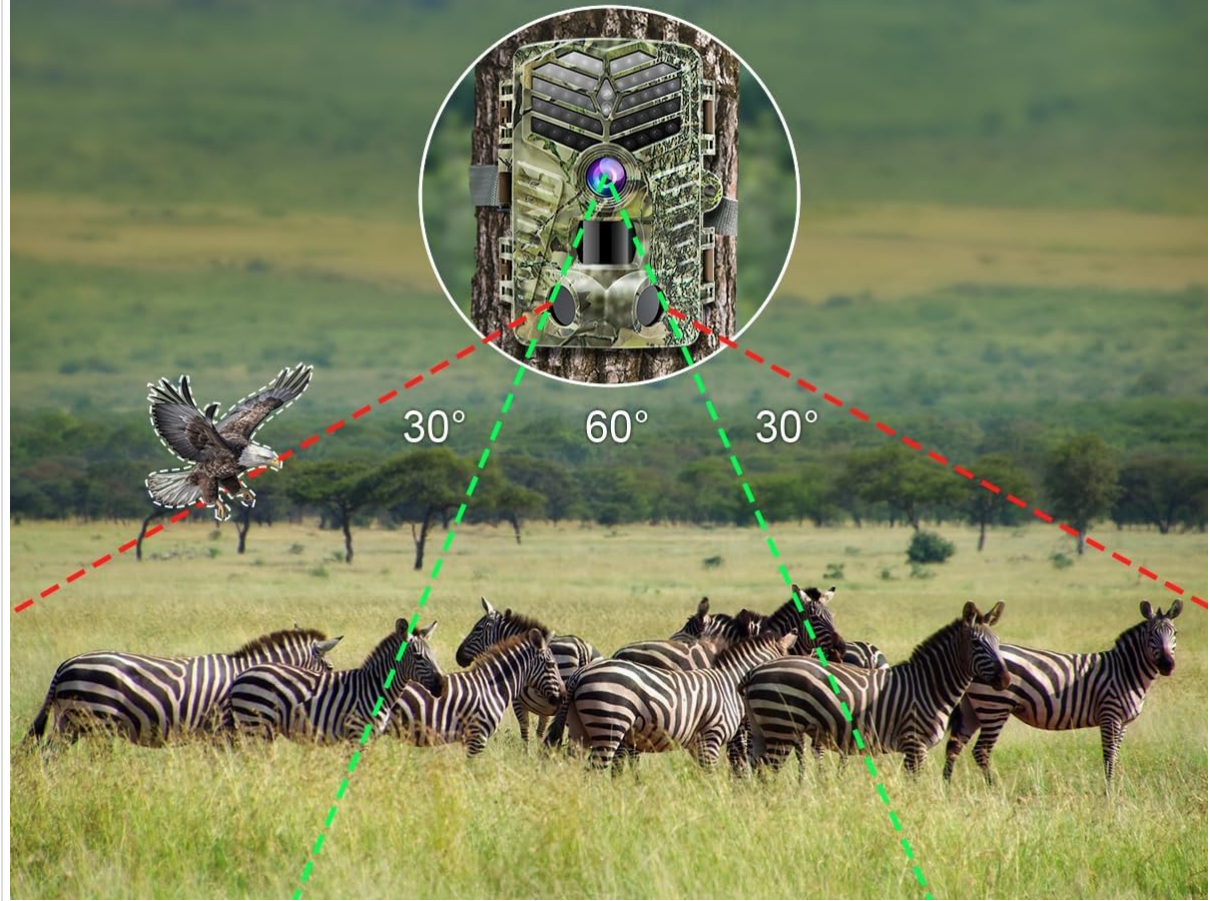


Figure 5: 0.2s Trigger Speed and 120° Detection Angle

5.2 Night Vision

Equipped with 40pcs No Glow 950nm infrared lights, the camera captures clear black and white images at night without disturbing wildlife. The fill light technology prevents overexposure or over-dimming. Set the infrared fill light distance to "Far" for enhanced night vision.



Figure 6: Excellent Night Vision

6. CONNECTIVITY (Wi-Fi & BLUETOOTH)

The XTU Trail Camera features integrated Wi-Fi and Bluetooth for convenient access via the dedicated app. Note that the camera connects to the app via its hotspot Wi-Fi and does not support connection to home Wi-Fi networks. The connection range is up to 20 meters.

6.1 App Connection Steps

1. Install the "TrailCam Go" app on your smartphone.
2. Follow the in-app instructions to add a device.
3. Turn on the camera and ensure it's in "ON" mode.
4. The app will connect to the camera's hotspot Wi-Fi.



Figure 7: Wi-Fi and Bluetooth Connection

Video 2: How to connect the trail camera to app (Seller Video). This video provides a step-by-step guide on connecting your camera to the mobile application.

7. MEDIA MANAGEMENT

You have several options to browse and manage your captured photos and videos:

- **Via App:** View and download files directly to your phone using the Wi-Fi and Bluetooth connection.
- **USB Cable:** Connect the camera to a PC using the included USB cable to transfer files.
- **SD Card Reader:** Insert the Micro SD card into a card reader to access files on a computer.

Enable loop recording in the settings to automatically overwrite the oldest videos and photos when the Micro SD card is full.

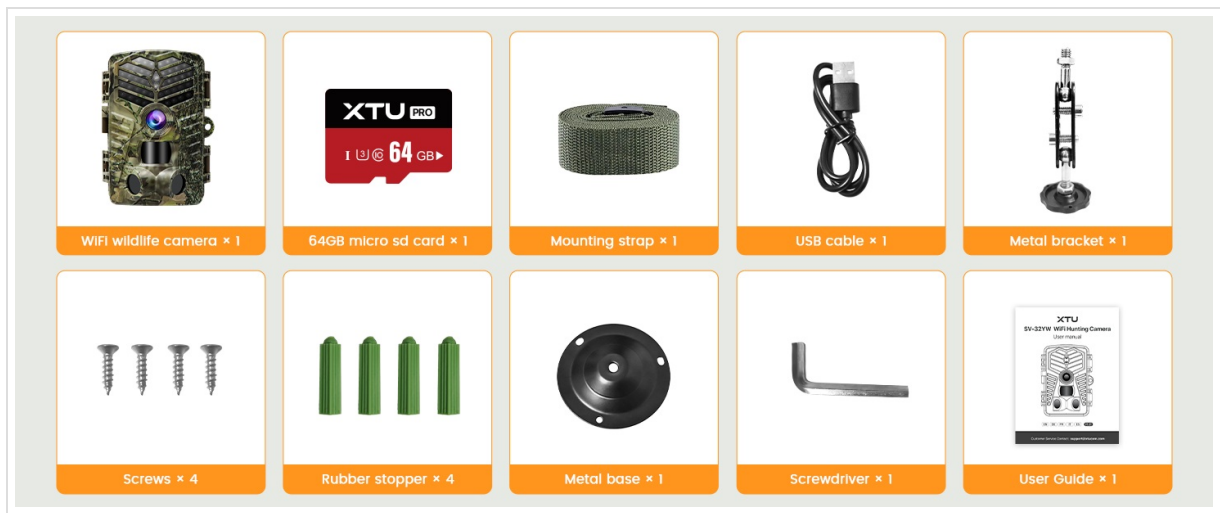


Figure 8: File Browsing Options

8. POWER AND BATTERY

The XTU Trail Camera is powered by 8 x 1.5V AA batteries. For continuous operation, external power options such as a 6V 1.5A solar panel or a 6V 1.5A power cord with a 3.5x1.35mm power plug can be used. Please note that these external power accessories are not included with the camera and must be purchased separately.

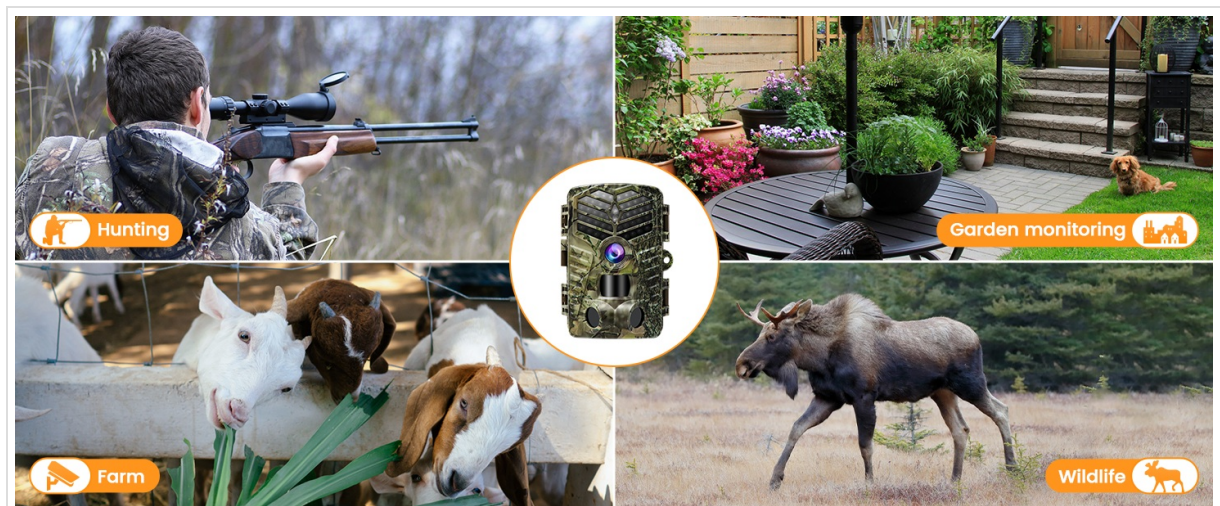


Figure 9: Power Options (Batteries and External Power)

9. MAINTENANCE

The camera is designed with a robust IP66 waterproof casing, allowing it to operate effectively in various weather conditions including rain, snow, and heat. The operating temperature range is -30°C to 70°C (-22°F to 158°F).



Figure 10: IP66 Waterproof Design

To ensure longevity and optimal performance, regularly check the camera for any debris or dirt, especially around the lens and sensors. Keep the battery compartment dry and clean.

10. TROUBLESHOOTING

If you encounter issues with your XTU Trail Camera, consider the following:

- **No Power:** Ensure batteries are correctly inserted and fully charged. Check for proper battery type (1.5V AA).
- **No Recordings:** Verify the SD card is inserted correctly and formatted. Check the camera's operating mode and working time settings. Ensure PIR sensitivity is appropriate for the environment.
- **False Triggers:** Adjust PIR sensitivity to a lower setting, especially in high-temperature environments or areas with frequent non-wildlife motion.
- **Connectivity Issues:** Ensure Bluetooth and Wi-Fi are enabled on your phone. Make sure you are within the 20M connection range.
- **Factory Reset:** If problems persist, resetting the camera to factory default settings can resolve many issues. Note that this will erase all custom settings.

11. SPECIFICATIONS

Feature	Specification
Model Name	SV-32YW
Video Resolution	2.7K
Photo Resolution	48 MP
Detection Angle	120 Degrees
Night Vision Range	75 Feet
Trigger Speed	0.2 seconds
Connectivity	Bluetooth, Wi-Fi
Water Resistance	IP66 Waterproof
Power Source	Battery Powered (8 x 1.5V AA)
Flash Memory	64 GB Micro SD (included), supports up to 256 GB
Operating Temperature	-30°C to 70°C (-22°F to 158°F)
Dimensions	5.39 x 3.82 x 2.99 inches
Weight	9.1 ounces

12. WARRANTY AND SUPPORT

XTU is committed to providing quality wildlife cameras and excellent customer service. For any technical assistance or warranty inquiries, please refer to the contact information provided in your product packaging or visit the official XTU website. XTU offers 24/7 professional technical support to address your needs.

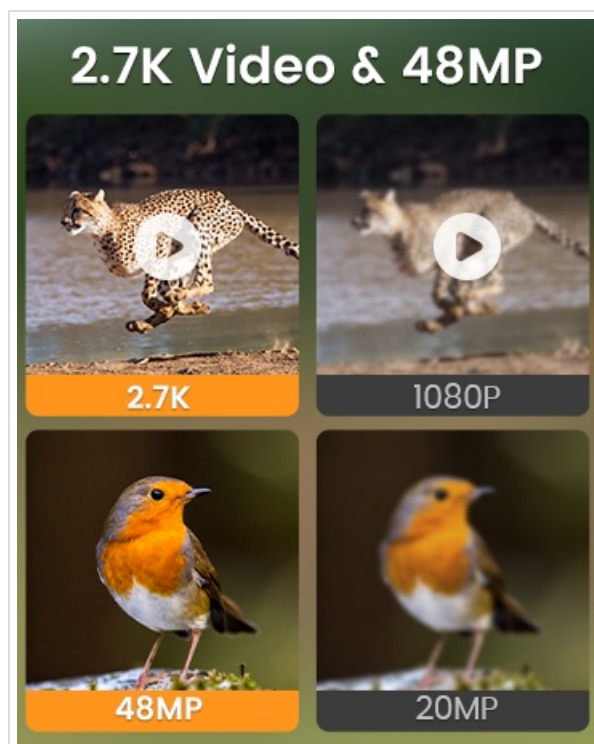


Figure 11: XTU Customer Support Promise

