

Phomemo M832

Phomemo M832 Portable Thermal Printer User Manual

Model: M832

1. INTRODUCTION AND OVERVIEW

The Phomemo M832 is a portable thermal printer designed for convenience and efficiency. It utilizes advanced direct thermal technology, eliminating the need for ink, toner, or ribbons. This printer supports various thermal paper sizes, including US Letter (8.5" x 11") and A4, making it suitable for a wide range of printing tasks on the go. Its compact design and wireless connectivity options ensure you can print documents, receipts, and more, wherever you are.

[illegible]

Attention: The Portable Printer Only Support Print Thermal Paper,Not for Regular (Copy) Paper

Key Features:

- **Inkless Thermal Printing:** No need for ink cartridges, toner, or ribbons, reducing operational costs.
- **Wireless Bluetooth Connectivity:** Connects to iOS and Android phones/tablets via the "Phomemo" app.
- **USB Wired Connectivity:** Compatible with Windows (7 and later), macOS (10.14 and later), Linux, and Chrome OS via USB cable.
- **Wide Paper Compatibility:** Supports US Letter (8.5" x 11"), A4, and thermal paper rolls of 10 cm, 8.14 cm, and 5.8 cm widths.
- **High Resolution:** 300 dpi for clear and crisp prints.
- **Portable Design:** Lightweight and compact, ideal for travel, home, office, or school use.

- **Long-lasting Battery:** Built-in 2600 mAh rechargeable battery, capable of printing up to 150 US Letter sheets on a full charge.

2. PACKAGE CONTENTS

Please check the box for the following items:

- 1 x Phomemo M832 Portable Thermal Printer (Gray)
- 1 x Phomemo M832 Printer Case
- 1 x USB Data Cable (80 cm)
- 1 x User Manual
- 1 x Thermal Paper Roll (21 x 28 cm, US Letter size)
- Additional thermal paper rolls (10 cm, 8.14 cm, 5 cm widths) may be included depending on the package.

3. PRODUCT DIAGRAM



Image 3.1: Phomemo M832 printer with its protective case and a document being printed. The image illustrates the compact

size and functionality.

The Phomemo M832 printer features a minimalist design. Key components include the paper input slot, paper output slot, power button, status indicator light, and USB-C port for charging and wired connection.

4. SETUP

4.1 Charging the Printer

Before initial use, fully charge the printer. Connect the provided USB-C cable to the printer's USB-C port and the other end to a compatible USB power adapter (not included) or a computer's USB port. The status indicator light will show charging status (e.g., red for charging, green for fully charged). The printer has a 2600 mAh rechargeable battery.

Note: Do not use chargers with an output above 5V. Fast charging is not supported.

4.2 Loading Thermal Paper

1. Open the paper cover of the printer.
2. Insert the thermal paper roll or stack of thermal sheets into the paper compartment, ensuring the printable side faces the print head.
3. Adjust the paper guides to fit the width of the paper snugly.
4. Close the paper cover. Ensure the paper is loaded correctly to prevent jams.

Support 5 Sizes Thermal Paper



Image 4.1: The Phomemo M832 printer demonstrating its compatibility with five different thermal paper sizes, including US Letter and A4, and highlighting jam-free operation.

5. OPERATING INSTRUCTIONS

5.1 Powering On/Off

- **To Power On:** Press and hold the power button until the status indicator light illuminates.
- **To Power Off:** Press and hold the power button until the status indicator light turns off.

5.2 Connecting via Bluetooth (for Phones/Tablets)

The Phomemo M832 connects to iOS and Android devices exclusively through the "Phomemo" application.

1. Download the "Phomemo" app from the App Store (iOS) or Google Play Store (Android).
2. Ensure your printer is powered on and Bluetooth is enabled on your phone or tablet.
3. Open the Phomemo app and follow the in-app instructions to search for and connect to your M832 printer.
4. Once connected, you can select documents or images within the app to print.

Important: Do not attempt to connect the printer directly via your phone's or tablet's Bluetooth settings. Connection must be initiated through the Phomemo app.



Image 5.1: Demonstrates connecting the Phomemo M832 printer to a mobile device using Bluetooth via the dedicated Phomemo application.

5.3 Connecting via USB (for Laptops/PCs)

The Phomemo M832 can be connected to Windows, macOS, Linux, and Chrome OS computers via a USB

data cable.

1. Ensure your printer is powered on.
2. Connect the printer to your computer using the provided USB data cable.
3. Your computer may automatically install the necessary drivers. If not, drivers can be downloaded from the official Phomemo website.
4. Once drivers are installed, the printer will appear in your computer's list of available printers. You can then print documents as you would with any standard printer.

Important: The Phomemo M832 does not support Bluetooth connection with laptops or PCs; only USB wired connection is available for these devices.



Image 5.2: Illustrates the USB wired connection between the Phomemo M832 printer and a laptop, compatible with various operating systems.

6. MAINTENANCE

6.1 Cleaning the Print Head

To maintain print quality, regularly clean the print head. Use a soft, lint-free cloth lightly dampened with isopropyl alcohol. Gently wipe the print head surface. Ensure the printer is powered off and completely dry before use.

6.2 Battery Care

- Avoid fully discharging the battery frequently.
- If storing the printer for an extended period, charge it to approximately 50% every three months to preserve battery life.
- Do not expose the printer to extreme temperatures.

6.3 Storage

Store the printer in a cool, dry place away from direct sunlight and excessive dust. When not in use, it is recommended to store the printer in its protective case to prevent damage.



Image 6.1: The Phomemo M832 protective case, designed to shield the printer from impacts and organize accessories.

7. TROUBLESHOOTING

Problem	Possible Cause	Solution
Printer does not power on.	Low battery or power button not pressed correctly.	Charge the printer. Press and hold the power button for a few seconds.

Problem	Possible Cause	Solution
Cannot connect via Bluetooth.	Not using the Phomemo app, Bluetooth is off, or printer is out of range.	Ensure you are connecting through the Phomemo app. Turn on Bluetooth on your device. Move the printer closer to your device (within 10 meters).
Poor print quality or blank pages.	Incorrect paper loading, low battery, or dirty print head.	Reload paper correctly (printable side facing print head). Charge the printer. Clean the print head as per maintenance instructions.
Paper jam.	Improper paper loading or foreign object.	Power off the printer. Carefully open the paper cover and remove any jammed paper. Ensure paper is loaded straight.
Printer not recognized by PC via USB.	Missing or outdated drivers.	Download and install the latest drivers from the official Phomemo website. Try a different USB port or cable.

8. SPECIFICATIONS

Feature	Detail
Model	M832
Printing Technology	Direct Thermal
Print Resolution	300 dpi
Connectivity	Bluetooth (for phones/tablets), USB-C (for laptops/PCs)
Compatible Devices	iOS (10+), Android (8+), Windows (7+), macOS (10.14+), Linux, Chrome OS
Max Media Size	21 x 28 cm (US Letter / A4)
Supported Paper Sizes	8.5" x 11" (US Letter), A4, 4.33" (110mm), 3.14" (80mm), 2.08" (53mm)
Max Sheet Input Capacity	150 sheets
Battery	2600 mAh rechargeable Lithium Polymer
Print Speed (Monochrome)	5 ppm
Product Dimensions	34.8 x 10.6 x 7.9 cm (13.7 x 4.17 x 3.11 inches)
Product Weight	700 g (1.54 lbs)
Memory	64 MB

9. WARRANTY AND SUPPORT





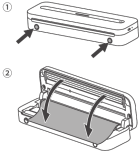
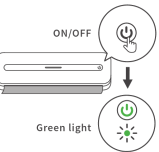
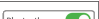
Phomemo products are designed for reliability and performance. For specific warranty details, please refer to the warranty card included with your product or visit the official Phomemo website. If you encounter any issues

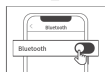
or have questions regarding your Phomemo M832 printer, please contact Phomemo customer support for assistance.

Customer Support: Please visit the Phomemo official website or refer to the contact information provided in your product packaging for support.

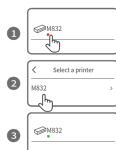
© 2024 Phomemo. All rights reserved.

Related Documents - M832

	<p>Phomemo M832 Printer Quick Start Guide</p> <p>A concise guide to setting up and using the Phomemo M832 printer with both computer and smartphone connections, including driver installation, paper loading, and Bluetooth pairing.</p>
<div><div><p>M832</p><p>Quick Start Guide</p></div><div><p>Smartphone-controlled スマートフォンと接続する Smartphone-Steuerung</p></div><div><p>1</p><p>English: Get/Install the Phomemo App. 日本語: Phomemoアプリをインストールする Deutsch: Holen/Installieren Sie die Phomemo App.</p></div><div><p>2</p><p>English: Follow the steps to load the paper roll properly. 日本語: 手順に従って紙ロールを正しくセットしてください。 Deutsch: Folgen Sie den Schritten, um die Papierrolle ordnungsgemäß zu laden.</p></div><div><p>3</p><p>ON/OFF</p><p>Green light</p><p>English: Press and hold for 3s to turn on the M832 printer. 日本語: 3秒を長押しすると、M832印刷機が起動します。 Deutsch: Halten Sie 3 Sekunden lang gedrückt, um den M832 Drucker einzuschalten.</p></div><div><p>4</p></div></div>	



5



6



FCC Warning

This device complies with part 15 of the FCC Rules. Operation is subject to the following two conditions: (1) This device may not cause harmful interference, and (2) this device must accept any interference received, including interference that may cause undesired operation.

Any Changes or modifications not expressly approved by the party responsible for compliance could void the user's authority to operate the equipment.

This equipment has been tested and found to comply with the limits for a Class B digital device, pursuant to Part 15 of the FCC Rules. These limits are designed to provide reasonable protection against harmful interference in a residential installation. This equipment generates uses and can radiate radio frequency energy and, if not used properly, may cause interference with the intended reception of radio communications. However, there is no guarantee that interference will not occur in a particular installation. If this equipment does cause harmful interference to you, you may wish to take one or more of the following measures to correct the interference:

- Reorient or relocate the receiving antenna.
- Increase the separation between the equipment and receiver.
- Connect the equipment into an outlet on a circuit different from that to which the receiver is connected.
- Consult the dealer or an experienced radio/TV technician for help.

The device has been evaluated to meet general RF exposure requirements.

The device has been evaluated to meet general RF exposure requirements. The device can be used in portable operation condition without restriction.

IC Warning

IC Caution:
Radio Standards Specification RSS-Gen, Issue 5-English:
This device contains license-exempt transmitter(s)/receiver(s) that comply with Innovation, Science and Economic Development Canada's license-exempt RSS(s). Operation is subject to the following two conditions:
This device may not cause interference.
This device must accept any interference, including interference that may cause undesired operation of the device.
RF exposure statement:

The device has been evaluated to meet general RF-exposure requirements. The device can be used in portable exposure conditions without restriction.

- French: Cet appareil contient des émetteurs / récepteurs exemptés de licence conformes aux RSS (RSS d'Innovation, Sciences et Développement économique Canada). Le fonctionnement est soumis aux deux conditions suivantes:

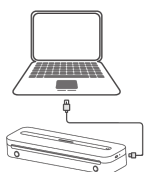
Cet appareil ne doit pas causer d'interférences.
Cet appareil doit accepter toutes les interférences, y compris celles
susceptibles de provoquer un fonctionnement indésirable de l'appareil.
Déclaration d'exemption RF:

L'appareil a été évalué pour répondre aux exigences générales d'exposition aux RF. L'appareil peut être utilisé dans des conditions d'exposition



Scan the QR code to view more instructions.
QRコードをスキャンして詳しい説明書を見る
Scannen Sie den QR-Code, um weitere Anweisungen anzuzeigen

Computer Printing with Data Cable
データケーブルを使用したコンピュータ印刷
Computerdruck mit Datenkabel



1



2



3

A concise guide to setting up and using the Phomemo M832 printer for both smartphone and computer printing. Learn how to connect via Bluetooth, load paper, install drivers, and print various file types.

<div><div><div><div><div><div>1</div><div>Plug in power</div><div>Bevor Sie den M832 an das Stromnetz anschließen, lesen Sie bitte die folgenden Anweisungen sorgfältig durch.</div></div><div><div>OK</div><div>Cancel</div></div></div><div><div><div>2</div><div>Insert the driver disk into the computer's drive</div><div>Inserting the driver disk into the computer's drive</div><div>The driver will be automatically installed on the computer.</div><div>Driver Name: M832</div><div>✓ Driver Installed</div><div>Driver Updated</div></div><div><div>Next</div><div>Cancel</div></div></div></div><div><div>English</div><div>日本語</div><div>Deutsch</div></div><div><p>Follow the above instructions to install the driver.</p><p>上記の手順でドライバーをインストールしてください。</p><p>Folgen Sie den obigen Anweisungen, um den Treiber zu installieren.</p></div><div><div><div>4</div><div><div>1</div><div>2</div></div><div></div></div><div><div>English</div><div>日本語</div><div>Deutsch</div></div><div><p>Follow the steps to load the paper roll properly.</p><p>手順にそって紙巻を正しくセットしてください。</p><p>Folgen Sie den Schritten, um die Papierrolle ordnungsgemäß zu laden.</p></div><div><div><div>5</div><div><div>ON/OFF</div><div>Green light</div></div><div></div></div><div><div>English</div><div>日本語</div><div>Deutsch</div></div><div><p>Press and hold for 3s to turn on the M832 printer.</p><p>3秒も長押しすると、M832は起動します。</p><p>Halten Sie 3 Sekunden lang gedrückt, um den M832-Drucker einzuschalten.</p></div><div><div><div>6</div><div></div></div><div><div>English</div><div>日本語</div><div>Deutsch</div></div><div><p>Connect the printer to your computer with a Type-C data cable.</p><p>Type-Cデータケーブルを使用してプリンターをコンピュータに接続します。</p><p>Schließen Sie den Drucker mit einem Typ-C-Datenkabel an Ihren Computer an.</p></div><div><div><div>7</div><div></div></div><div><div>English</div><div>日本語</div><div>Deutsch</div></div><div><p>Right click the file and click the print button.</p><p>ファイルを右クリックして、印刷ボタンをクリックします。</p><p>Klicken Sie mit der rechten Maustaste auf die Datei und klicken Sie auf die Schaltfläche „Drucken“.</p></div><div><div><div>8</div><div><div><div>Print</div><div>Copies: 1</div><div>Print</div><div>Printer</div><div>M832 Printer</div></div></div></div><div><div>English</div><div>日本語</div><div>Deutsch</div></div><div><p>Select M832 on your computer and start printing.</p><p>コンピュータでM832を選択し、印刷を開始します。</p><p>Wählen Sie M832 auf Ihrem Computer und starten Sie den Druckvorgang.</p></div></div></div></div></div></div></div></div>	<div><div>Phomemo M832 A4 Portable Thermal Printer User Guide and Tips</div><div>Information and usage tips for the Phomemo M832 A4 Portable Thermal Printer by Zoolion, including setup instructions and troubleshooting advice.</div></div>
<div><div></div><div><div>M832</div><div>Portable Printer</div><div>User Guide</div></div><div>Before using this product, please read this manual carefully.</div></div>	

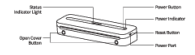
English

01. Package Contents



**Attention:* All pictures in this instruction manual are for illustration purposes only. The actual product may vary due to product enhancement.

02. Printer Components



Button Function	
[Power] Button Functions	Operation
Turn on the printer	Press and hold the button for around 3 seconds until the power indicator light turns on.
Print QR code	Double-press the button to print QR code. You can scan the QR code using the App on the phone and connect to the printer.
Turn off the printer	Press and hold the button for around 3 seconds until the power indicator light turns off.

	Status	Power Indicator	Status Indicator Light
Printer Status	Powered	ON (Green)	ON (Blue)
	Cover is open	ON (Green)	ON (Blue)
	Charging while powered on	OFF	ON (Blue)
	Charging while powered on	ON	ON (Blue Slowly Blink)
	Fully Charged	ON (Green)	ON (Blue Slowly Blink)
Communication	Low Power	ON (Green)	ON (Blue Slowly Blink)
		ON (Blue Slowly Blink)	
Connectivity	Bluetooth Connected	ON (Green)	ON (Blue)
		ON (Green)	ON (Blue)
Paper Status	Powered	ON (Green)	ON (Blue)
	No Paper / Paper Not Detected	ON (Red)	ON (Blue)
Others	Print Head is overheated	ON (Red)	ON (Blue)
	Reset Buttons	OFF	OFF

03. Precautions

- **Throttle cable** is **not** to be **clipped or changed**.
 - **Throttle cable** must be **adjusted** to the **proper adjuster** before **changing**, **gears gently** into **reverse** and **clipping the charging cable** to **change**, to **prevent** **damage** from **excessive** **revving**.
 - **After the change is completed**, **leave** the **charging cable** in **reverse**.
 - **When the engine is started**, **check** the **oil** **level**, **oil** **pressure**, **oil** **temperature**, **high** **humidity**, **heavy** **shock** and **dash**, **such as** in **barometer**, **dash** **read**, **to** **open** **gears**.
 - **Improve** **charging** **now** **can** **cause** **damage** **to** **the** **print** **head**.
 - **When** **the** **print** **head** **is** **not** **working**, **check** **the** **print** **head** **for** **damage**.
 - **The** **charging** **head**, **if** **any**, **please** **be** **careful** **to** **avoid** **contacting** **the** **print** **head**.
 - **If** **the** **print** **head** **is** **not** **working**, **check** **the** **print** **head** **for** **damage**.
- Battery warning instructions**
- * Is a battery to be discharged, it is, adjust the battery, or turn it on.
 - * If a battery is to be discharged, it is, adjust the battery, or turn it on.
 - * Do not place a battery in a high temperature environment, and it is strictly prohibited to use the battery in a high temperature environment.
 - * There is a danger of explosion if the battery is replaced by the wrong type. Be sure to dispose of the used battery according to the instructions.
 - * If a battery is a power source for a device, it is strictly prohibited to use the battery as a power source when the requirements of corresponding safety standards in a power source with GEL construction.

04. Install App

1. Download the App

Please search for "Phonemo" on your phone's App market and download the App.

Search for Phonemo in the Apple App Store, click to download and install

Search for Phonemo in the Google App Store, click to download and install

 Google Play
  App Store
 



2. How to download and install driver

Download the latest driver from the official website. Download the relevant driver according to the your operating system version and follow the instruction to install the driver.



05. instructions

1. Instructions for consumable usage

1. Press the two Open Cover Buttons at the same time to open the cover.
2. Take out the randomly included paper roll and unroll it.
3. Insert the paper roll back into the paper compartment and pull the paper out of the Paper Output Slot. Close the Cover.
4. Press and hold the power button for 3 seconds to start the printer.

→ **Here is how to differentiate the front and back of the printing paper**

- ① Take a piece of printing paper and scratch both sides of the paper with your fingernails. The front side is the side with ridges. Install the paper with the front side facing upward.
- ② This product can print different sizes of pages. Please adjust the position of the convertible holder according to the width of the consumables.
- ③ To achieve the best result, please use our genuine printing paper.

2. Instructions for single sheet paper and folded paper usage.

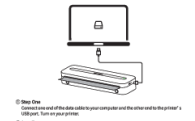
- ③ You can set the paper type to the corresponding type in the menu application.
- When using a single size of paper or loaded paper, set the paper to be loaded to hold the paper and the paper in its original size and shape. Then, insert the paper carefully into the printer. It is better when the paper is loaded in the printer to the optimal position. To achieve the best result, please use our guaranteed printing paper.
- ④ When you need to take out the printed paper, press the open cover button immediately, and the reaction time will gently pull paper out. Then, tear the paper.
- **NOTE**
- ① The paper must be inserted aligned to the paper feeder.
 - ② This product can print different size of papers. Please adjust the position of the cover to be loaded according to the width of paper.
 - ③ When using "loaded paper", after printing your documents, tear along the perforation line.

3-1. Connect the printer to the App



- Method 1**
Turn on the **Bluetooth** on your phone, launch the **Phenomena APP** on the icon at the upper right corner of the **Phenomena APP** main interface, and select the corresponding **model** from the drop-down list to establish a connection.
- Note: system needs to enable **positioning** and allow app to obtain relevant permissions.*
- Method 2**
Click on **press the printer's** power button to print a QR code. Open your **Phenomena APP** and press the button on the top-right of your **Phenomena APP** home page. On the scanner page, press scan and scan the QR code to connect to the printer.

3-2. Connect the printer to the computer



- Step One**
Connect one end of the data cable to your computer and the other end to the printer's USB port. Turn on your printer.
- Step Two**
Enter official website and download the printer's drivers, install the printer's driver.
- Official website: M832.phonememo.com

06. Official Printing Paper Type

- * Any issues with your printer arising from using non-official printing papers will not be covered under our warranty policy.

07. Warranty card

	<input type="checkbox"/> Return	<input type="checkbox"/> Exchange	<input type="checkbox"/> Repair
User Info	Name	Gender	Phone
	Address		
	Purchase date		
Product Info	Product order number		
	Product serial number		
Requirements of return (replacement, repair?)	Reason description		
Warranty service	Failure conditions		Warranty person
	Handling situation		Delivery date
	Maintenance (cost, burden)		Delivery date

08. FCC Warning

FCC Warning statement:
This device complies with part 15 of the FCC Rules. Operation is subject to the following two conditions: (1) This device may not cause harmful interference, and (2) this device must accept any interference received, including interference that may cause undesired operation.

Any changes or modifications not expressly approved by the party responsible for compliance could void the user's authority to operate the equipment.

This equipment has been tested and found to comply with the limits for a Class B digital device, pursuant to part 15 of the FCC Rules. These limits are designed to provide reasonable protection against harmful interference in a residential installation. This equipment generates and can radiate radio frequency energy and, if not installed and used in accordance with the instructions, may cause harmful interference to radio communications. However, there is no guarantee that interference will not occur in a particular installation. If it is found that this equipment is causing interference, the user is advised to consult the dealer or a qualified radio technician for additional suggestions.

- Increase the separation between the equipment and receiver.

- Decrease the separation between the equipment and receiver.
- Connect the equipment into an outlet on a circuit different from that to which the receiver is connected.
- Consult the dealer or an experienced radio/TV technician for help.

FCC RF exposure statement

This device has been evaluated and found to meet FCC exposure limits. This device was

09. IC Warning

09. IC Warning

2. This device cannot cause interference.

Le présent document est exempt de toute interférence, y compris les interférences qui pourraient provenir d'autres appareils de la même gamme.

1.A) appareil ne doit pas produire de brouillages
2.A) appareil doit accepter tout brouillage radioélectrique subi, même si le brouillage est susceptible d'être compensative si le fonctionnement.

RF exposure statement

IC RF exposure statement

The device has been evaluated to meet general IC RF exposure requirement. The device

IC Déclaration d'exposition aux RF:
L'appareil a été évalué pour répondre aux exigences générales d'exposition aux RF d'IC.
L'appareil peut être utilisé dans des conditions d'exposition portables sans restriction.

Phomemo M832 Portable Thermal Printer User Guide

User guide for the Phomemo M832 portable thermal printer, covering package contents, printer components, precautions, app installation, printing instructions, paper types, warranty, and FCC/IC compliance.



Before using this product, please read this manual carefully.

01. Package Contents



02. Printer Components



03. Precautions

- 1) Plug into 220V AC input for charging.
- 2) Please ensure the USB cable is the power adapter before charging, please gently pull or snap the charging cable to ensure, to prevent excessive force from damaging the port.
- 3) After the charge plug is completed, please snap the charging cable into the device.
- 4) Please ensure the power adapter is plugged into the power adapter after the device, high quality, heavy weight and in fact, it is a high-end, more than, more (super) than, etc.
- 5) To snap charging plug into the power adapter, please hold the plug.
- 6) Please do not pull the plug too fast and do not pull too fast.
- 7) The best way to find it, if you please, is to consult the user manual for details.
- 8) If the status is not as you want, I will do the best to let you know the machine.

Battery warning instructions

04. Install App

1. Download the App

Please search for "Phoneme" on your phone's App market and download the App.

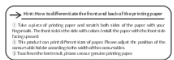
Search for Phoneme in the Apple App Store, click to download and install it!

Search for Phoneme in the Google App Store, click to download and install it!



1000000

05. Instructional



2. Instructions for single sheet paper and folded paper are given.



3-2. Connect the printer to the computer



06. Official Printing Paper Type

④ **Normal thermal paper:** Does it contain Bisphenol A.

⑤ **Whitish-Quartz drying thermal paper:** Thermal paper that does not contain Bisphenol A, contains whitening, and dries quickly.

The printing paper is not the same as the official printing paper.

*As you know with your printer and repair, using non-official drying paper will not be smooth under our security policy.

07. Warranty card

08. FCC Warning

This test is completed by part 15 of the FCC Rules. Operators subject to the following conditions: (1) this device may cause harmful interference; and (2) this device must accept any interference received, including interference that may cause undesired operation.

Ify Changes or modifications not expressly approved by the party responsible for compliance could void the user's authority to use the equipment.

This equipment has been tested and found to comply with the limits for a class B digital device, pursuant to part 15 of the FCC Rules. These limits are designed to provide reasonable protection against harmful interference in a residential installation. This equipment generates, uses, and can radiate radio frequency energy and, if not installed and used in accordance with the instructions, may cause harmful interference to radio communications. However, there is no guarantee that interference will not occur in a particular installation. If you experience interference, you are encouraged to take certain steps to reduce or eliminate the interference, such as reorienting the antenna, using a different power outlet, or using a different power cord. If these steps do not resolve the interference, you may wish to contact the manufacturer for assistance. The manufacturer is not responsible for any interference that may occur in a particular installation.

Comprehensive user manual for the Phomemo M832 portable printer, covering setup, operation, troubleshooting, and specifications. Learn how to connect, print, and maintain your device.

[illegible]

[Phomemo M832 Quick Start Guide: Computer and Smartphone Printing](#)

A concise guide to setting up and using the Phomemo M832 portable thermal printer for printing from computers via USB-C and smartphones via Bluetooth. Covers installation, connection, and basic operation.

Documents - Phomemo – M832



M832

Before using this product, please read this manual carefully.

English

01. Package Contents



*Attention: All pictures in this instruction manual are for illustration purposes only. The actual product may vary due to production enhancement.

02. Printer Components



Bluetooth Functions		
IP Query	Bluetooth Function	Operation on
	Turn on the printer	Press and hold the button for around 3 seconds until the power indicator light turns on.
	Print QR code	Double-press the button to print QR code. You can scan the QR code using the app on the phone and connect to the printer.
	Turn off the printer	Press and hold the button for around 3 seconds until the power indicator light turns off.

Indicator Light	Status	Power Indicator	Status Indicator Light
Printer Status	Normal	Light Green	Light Blue
	Cover is open	Off	Red
	Changing ink to powered on in 30 seconds	Off	Black/Standby (Yellow)
	Change ink to powered on	Off	Black/Standby (Yellow)
	Ready Chopped	Light Green	Light Blue
Connection Status	Low Power	Black/Standby (Red)	Black/Standby (Yellow)
	Bluetooth Connected	Light Green	Light Blue
Paper Status	Normal	Light Green	Light Blue
	No Paper / Paper Not Selected	Light Blue	Light Blue
Others	Paper Handover/overheat	Light Blue	Light Blue
	Self-Action	Light Blue	Light Blue

03. Precautions

- Please use the AC adapter for charging.
- Please connect the USB cable to the power adapter before charging, please gently insert or unplug the charging cable when charging, to prevent excessive force from damaging the port.
- After the charging is completed, please unplug the charging cable in time.
- In order to avoid danger, do not use or charge the device in high temperature, humid, flammable, highly heavy metal and dust, such as in the bathroom, shower room, near to open flame, etc.
- Improper charging may cause damage to the product.
- Do not touch the port head to prevent a short circuit or by overcharging.
- The hot red blade is sharp, please be careful to avoid touching it by mistake.

Battery warning lights are

- It is forbidden to disassemble, fix, squish the battery, or throw it into fire;
- If severe swelling occurs, please do not reuse it;
- Do not place in a high temperature environment, and it is strictly prohibited to use the battery after swelling in water;
- There is a danger of explosion if the battery is replaced by the wrong type. Be sure to dispose of the used battery according to the instructions;
- If consumers use a power adapter for power supply, they should purchase a power adapter that meets the requirements of corresponding safety standards or a power adapter with CCC certification.

04. Install App

1. Download the App

Please search for "Phonemo" on your phone's App market and download the App.

The App. Search for Phormena in the Apple App Store, click to download and use for free.

Search for Phormer in the Google App Store, click to download and install



2. How to download and install driver

Download the latest driver from the official website. Download the relevant driver according to the your operating system version and follow the instruction to install the driver.



PC Driver For Windows

PC Driver For MAC

05. Instructional

1. Instructions for consumable usage

- Press the two Open Cover Buttons at the same time to open the cover.
- Take out the randomly included paper roll and unfold it.
- Install the paper roll back into the paper compartment and pull the paper out of the Paper Output Slot. Close the Cover.
- Press and hold the power button for 3 seconds to boot the printer.

Hint: How to differentiate the front and back of the printing paper

- Take up one of printing paper and scratch both side of the paper with your fingernail. The front side of the paper will show the paper with the front side facing upwards.
- This product can print different size of paper. Please adjust the position of the consumable holder according to the width of the consumable.
- When using the barcode, please use our genuine printing paper.

2. Instructions for single sheet paper and folded paper usage.

- You can cut the paper type into the corresponding one in the application.
- When using a single sheet of paper or folded paper, use two hands to hold the paper and make sure it is straight and aligned. Insert the paper carefully into the printer's feeder until the rollers pull the paper into optimal position. To achieve the best result, please use our genuine printing paper.
- When you need to take out the printed paper, press the open cover button simultaneously, and the machine's top cover will gently pop open. Then, remove the paper.

Hint

- The paper must be oriented aligned to the paper feeder.
- This product can print different size of paper. Please adjust the position of the consumable holder according to the width of the consumable.
- When using "folded paper", after printing your documents, tear along the perforation line.

3.1. Connect the printer to the App



- Method 1**
Turn on the Bluetooth on your phone, launch the Phomemo APP, tap on the icon at the upper right corner of the Phomemo APP main interface, and select the corresponding model from the drop-down list to establish a connection.
**Note: system needs to enable positioning and allow app to obtain relevant permissions.*

- Method 2**
Double press the printer's power button to print a QR code. Open your Phomemo App and press the button on the top right of your Phomemo App home page. On the selection page, press scan and scan the QR code to connect to the printer.

3-2. Connect the printer to the computer



- Step One**
Connect one end of the data cable to your computer and the other end to the printer's USB port. Turn on your printer.

- Step Two**
Enter official website and download the printer's drivers. Install the printer's drivers.

Official website: M832.phomemo.com

- Step Three**
Add the printer to your computer and establish a connection. Once the connection is established, you can print your documents from your computer.

06. Official Printing Paper Type

- Normal thermal paper:** Does not contain Biphendol A.
- With Biphendol A Quick-drying thermal paper:** Thermal paper that does not contain Biphendol A, can be written on, and dries quickly.

*The printing papers mentioned above are official printing papers.

*Any issues with your printer arising from using non-official printing papers will not be covered under our warranty policy.

07. Warranty card

☐ Return ☐ Exchange ☐ Repair

User Info	Name:	Gender:	Phone:
	Address:		
Product Info	Purchase date:		
	Product order number:		
Requirements of return / replacement / repair	Product Serial Number:		
	Reason and description:		
Maintenance records	Failure condition:		Maintenance person:
	Handling situation:		Delivery date:
	Maintenance ticket number:		Delivery date:

08. FCC Warning

FCC Warning statement:

This device complies with part 15 of the FCC Rules. Operation is subject to the following

Phomemo M832 Portable Printer User Manual and Guide

Comprehensive user manual for the Phomemo M832 portable printer, covering setup, operation, troubleshooting, and specifications. Learn how to connect, print, and maintain your device.

lang:en score:52 filesize: 452.78 K page_count: 1 document date: 2024-10-30

may cause interference (2) The device may not cause harmful interference and (3) the device must accept any interference received, including interference that may cause undesired operation.

Any changes or modifications not expressly approved by the party responsible for compliance could void the user's authority to operate the equipment.

This equipment has been tested and found to comply with the limits for a Class B digital device, pursuant to part 15 of the FCC Rules. These limits are designed to provide reasonable protection against harmful interference in a residential installation. This equipment operates on and radiates radio frequency energy and, if not installed and used in accordance with the instruction, may cause harmful interference to radio communications. However, there is no guarantee that interference will not occur in a particular installation. If the equipment does cause harmful interference to radio or television reception, which can be determined by turning the equipment off and on, the user is encouraged to try to correct the interference by one or more of the following measures:

- Reorient or relocate the receiving antenna.
- Increase the separation between the equipment and receiver.
- Connect the equipment into an outlet on a circuit different from that to which the receiver is connected.
- Consult the dealer or an experienced radio/TV technician for help.

FCC RF exposure statement:

The device has been evaluated to meet general RF exposure requirement. The device can be used in portable exposure condition without restriction.

09. IC Warning

IC Warning statement:

This device contains license-exempt (transmission) hardware(s) that comply with Innovation, Science and Economic Development Canada's license-exempt (SSE(s)). Operation is subject to the following two conditions:

1. This device may not cause interference.
2. This device must accept any interference, including interference that may cause undesired operation in the device.

L'appareil contient des composants de licence-exempt dans le présent appareil et conforme aux CEI de l'innovation, Science et Développement économique Canada applicables aux appareils radio exempts de licence. L'exploitation est autorisée aux deux conditions suivantes:

1. L'appareil ne doit pas produire de brouillage.
2. L'appareil doit accepter tout brouillage radioélectrique subi, même si le brouillage est susceptible d'en compromettre le fonctionnement.

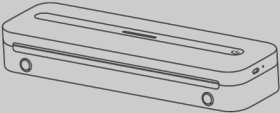
RF exposure statement

IC RF exposure statement:

The device has been evaluated to meet general IC RF exposure requirement. The device can be used in portable exposure condition without restriction.

IC Déclaration d'exposition aux RF:

L'appareil a été évalué pour répondre aux exigences générales d'exposition aux RF d'IC. L'appareil peut être utilisé dans des conditions d'exposition portable sans restriction.



M832

Quick Start Guide

Smartphone-controlled
スマートフォンと接続する
Smartphone-Steuerung

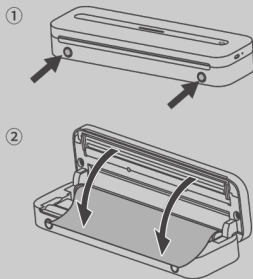


1



English Get/install the Phomemo App.
日本語 Phomemoアプリをインストールする
Deutsch Holen/Installieren Sie die Phomemo App.

2

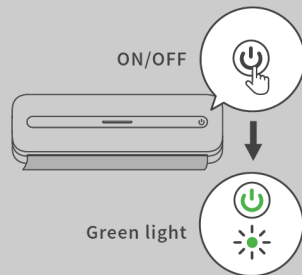


English Follow the steps to load the paper roll properly.

日本語 手順に従って紙ロールを正しくセットしてください。

Deutsch Folgen Sie den Schritten, um die Papierrolle ordnungsgemäß zu laden.

3

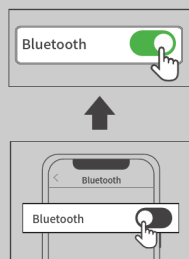


English Press and hold for 3s to turn on the M832 printer.

日本語 3秒を長押しすると、M832起動できる

Deutsch Halten Sie 3 Sekunden lang gedrückt, um den M832-Drucker einzuschalten.

4

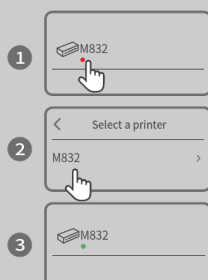


English Turn on Bluetooth from phone settings.

日本語 スマートフォンの設定からBluetoothをオンにする

Deutsch Aktivieren Sie Bluetooth über die Telefoneinstellungen.

5



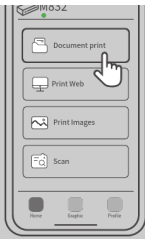
English Connect the printer via Bluetooth in the phomemo App.

日本語 phomemoアプリでBluetoothを利用してM832と接続する

Deutsch Verbinden Sie den Drucker über Bluetooth in der Phomemo App.

6





- English** Select the file in the Phomemo App to print.
- 日本語** Phomemoアプリでファイルを選択して印刷する
- Deutsch** Wählen Sie die zu druckende Datei in der Phomemo App aus.

FCC Warning

This device complies with part 15 of the FCC Rules. Operation is subject to the following two conditions:(1) This device may not cause harmful interference, and (2) this device must accept any interference received, including interference that may cause undesired operation. Any Changes or modifications not expressly approved by the party responsible for compliance could void the user's authority to operate the equipment.

This equipment has been tested and found to comply with the limits for a Class B digital device, pursuant to part 15 of the FCC Rules. These limits are designed to provide reasonable protection against harmful interference in a residential installation. This equipment generates uses and can radiate radio frequency energy and, if not installed and used in accordance with the instructions, may cause harmful interference to radio communications. However, there is no guarantee that interference will not occur in a particular installation. If this equipment does cause harmful interference to radio or television reception, which can be determined by turning the equipment off and on, the user is encouraged to try to correct the interference by one or more of the following measures:

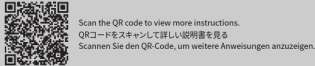
- Reorient or relocate the receiving antenna.
- Increase the separation between the equipment and receiver.
- Connect the equipment into an outlet on a circuit different from that to which the receiver is connected.
- Consult the dealer or an experienced radio/TV technician for help.

The device has been evaluated to meet general RF exposure requirement. The device can be used in portable exposure condition without restriction.

IC Warning

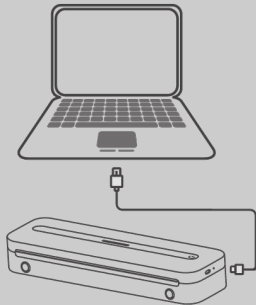
IC Caution:
Radio Standards Specification RSS-Gen, issue 5- English:
This device contains licence-exempt transmitter(s)/receiver(s) that comply with Innovation, Science and Economic Development Canada's licence-exempt RSS(s). Operation is subject to the following two conditions:
This device may not cause interference.
This device must accept any interference, including interference that may cause undesired operation of the device.
RF exposure statement:
The device has been evaluated to meet general RF exposure requirement. The device can be used in portable exposure condition without restriction.

- French:
Cet appareil contient des émetteurs / récepteurs exempts de licence conformes aux RSS (RSS) d'Innovation, Sciences et Développement économique Canada. Le fonctionnement est soumis aux deux conditions suivantes:
Cet appareil ne doit pas causer d'interférences.
Cet appareil doit accepter toutes les interférences, y compris celles susceptibles de provoquer un fonctionnement indésirable de l'appareil.
Déclaration d'exposition RF:
L'appareil a été évalué pour répondre aux exigences générales d'exposition aux RF. L'appareil peut être utilisé dans des conditions d'exposition portable sans restriction.



Scan the QR code to view more instructions.
QRコードをスキャンして詳しい説明書を見る
Scannen Sie den QR-Code, um weitere Anweisungen anzuzeigen.

Computer Printing with Data Cable
データケーブルを使用したコンピュータ印刷
Computerdruck mit Datenkabel



[Phomemo M832 Quick Start Guide: Smartphone and Computer Printing](#)

A concise guide to setting up and using the Phomemo M832 printer for both smartphone and computer printing. Learn how to connect via Bluetooth, load paper, install drivers, and print various file types.

lang:en score:40 filesize: 677.71 K page_count: 1 document date: 2025-04-14

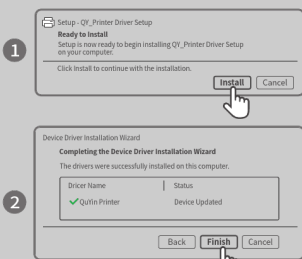
English Open the link: M832.phomemo.com
日本語 リンクを開きます: M832.phomemo.com
Deutsch Öffnen Sie den Link: M832.phomemo.com

2



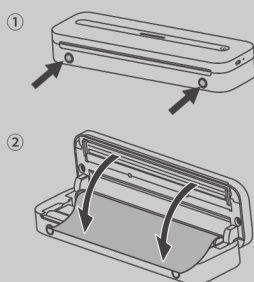
English Download the corresponding drive for your computer system.
日本語 コンピューターシステム向けのドライバをダウンロードします
Deutsch Laden Sie das entsprechende Laufwerk für Ihr Computersystem herunter.

3



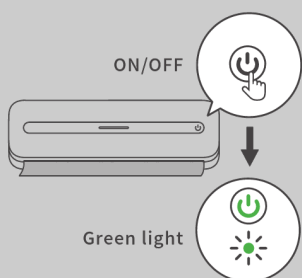
English Follow the above instructions to install the driver.
日本語 上記の手順でドライバーをインストールしてください
Deutsch Folgen Sie den obigen Anweisungen, um den Treiber zu installieren.

4



English Follow the steps to load the paper roll properly.
日本語 手順に従って紙ロールを正しくセットしてください。
Deutsch Folgen Sie den Schritten, um die Papierrolle ordnungsgemäß zu laden.

5

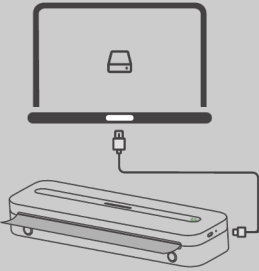


English Press and hold for 3s to turn on the M832 printer.
日本語 電源を長押しすると、M832起動する。

Deutsch

Halten Sie 3 Sekunden lang gedrückt, um den M832-Drucker einzuschalten.

6



English

Connect the printer to your computer with a Type-C data cable.


日本語

Type-Cデータケーブルを使用してプリンターをコンピューターに接続します

Deutsch

Schließen Sie den Drucker mit einem Typ-C-Datenkabel an Ihren Computer an.

7



English

Right-click the file and click the print button.

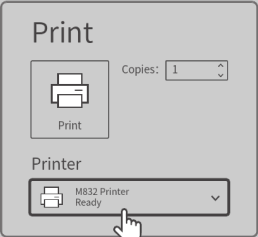
日本語

ファイルを右クリックして、印刷ボタンをクリックします

Deutsch

Klicken Sie mit der rechten Maustaste auf die Datei und klicken Sie auf die Schaltfläche „Drucken“.

8



English

Select M832 on your computer and start printing.

日本語

コンピューターでM832を選択し、印刷を開始します

Deutsch

Wählen Sie M832 auf Ihrem Computer und starten Sie den Druckvorgang.



[Phomemo M832 Printer Quick Start Guide](#)

A concise guide to setting up and using the Phomemo M832 printer with both computer and smartphone connections, including driver installation, paper loading, and Bluetooth pairing.

lang:en score:36 filesize: 538.88 K page_count: 1 document date: 2024-02-27



[Phomemo M832 A4 Portable Thermal Printer User Guide and Tips](#)

Information and usage tips for the Phomemo M832 A4 Portable Thermal Printer by Zoolion, including setup instructions and troubleshooting advice.

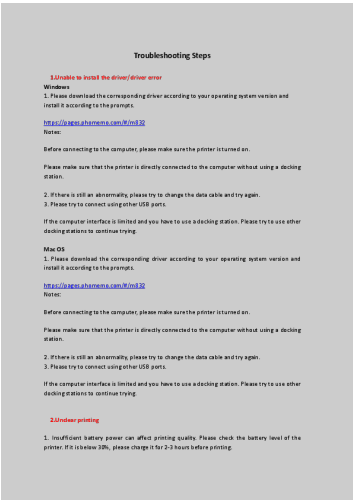
lang:en score:31 filesize: 58.24 K page_count: 1 document date: 2024-01-31



[Phomemo Brand Book 2025: Fun Memo](#)

Explore the Phomemo brand book for 2025, detailing the Phomemo story, products, and media presence. Discover the company's journey, its innovative printing solutions, and its vibrant community.

lang:en score:29 filesize: 5.61 M page_count: 39 document date: 2025-01-22

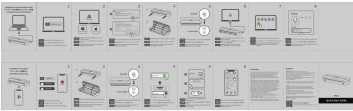


[\[pdf\] Installation Guide Troubleshooting Guide](#)

Z Troubleshooting Steps Please open the App Phomemo and connect printer via Bluetooth No need to setting on your phone Select model connect 81MHX4F60yL m media amazon images I |||

Troubleshooting Steps 1.Unable to install the driver/driver error Windows 1. Please download the corresponding driver according to your operating system version and install it according to the prompts. <https://pages.phomemo.com/#/m832> Notes: Before connecting to the computer, please make sure the pr...

lang:en score:26 filesize: 493.4 K page_count: 9 document date: 2024-10-25



[Phomemo M832 Quick Start Guide: Computer and Smartphone Printing](#)

A concise guide to setting up and using the Phomemo M832 portable thermal printer for printing from computers via USB-C and smartphones via Bluetooth. Covers installation, connection, and basic operation.

lang:en score:23 filesize: 538.89 K page_count: 1 document date: 2024-02-27