

ALLIANCE LAUNDRY SYSTEMS 202311P

ALLIANCE LAUNDRY SYSTEMS Washer Control Board Assembly (Model 202311P) Instruction Manual

1. INTRODUCTION

This instruction manual provides essential information for the proper installation, operation, and maintenance of the ALLIANCE LAUNDRY SYSTEMS Washer Control Board Assembly, Model 202311P. This component is designed as a direct replacement part for compatible Alliance Laundry Systems washers, ensuring optimal performance and functionality.

The control board, also referred to as ASSY CONTROL TLW C4 ROHS, PKG, is a critical electronic component responsible for managing various washer functions and cycles. Adherence to these instructions is crucial for safe and effective use.

2. SAFETY INFORMATION

WARNING: Before attempting any installation, maintenance, or repair, ensure the appliance is completely disconnected from its power source. Failure to do so can result in electric shock, serious injury, or death.

- Always wear appropriate personal protective equipment (PPE), such as safety gloves and eye protection.
- Installation and servicing should only be performed by qualified technicians.
- Handle the control board with care to avoid damage to electronic components. Avoid touching exposed circuitry.
- Ensure all connections are secure and correctly oriented before restoring power.
- This product contains chemicals known to the State of California to cause cancer and birth defects or other reproductive harm (Proposition 65 warning).

3. PRODUCT OVERVIEW

The ALLIANCE LAUNDRY SYSTEMS Washer Control Board Assembly (Model 202311P) is a genuine OEM replacement part designed for specific Alliance Laundry Systems washers. It is identified by part number 202311P and replaces previous part numbers 201967P, 202311, and 201967.

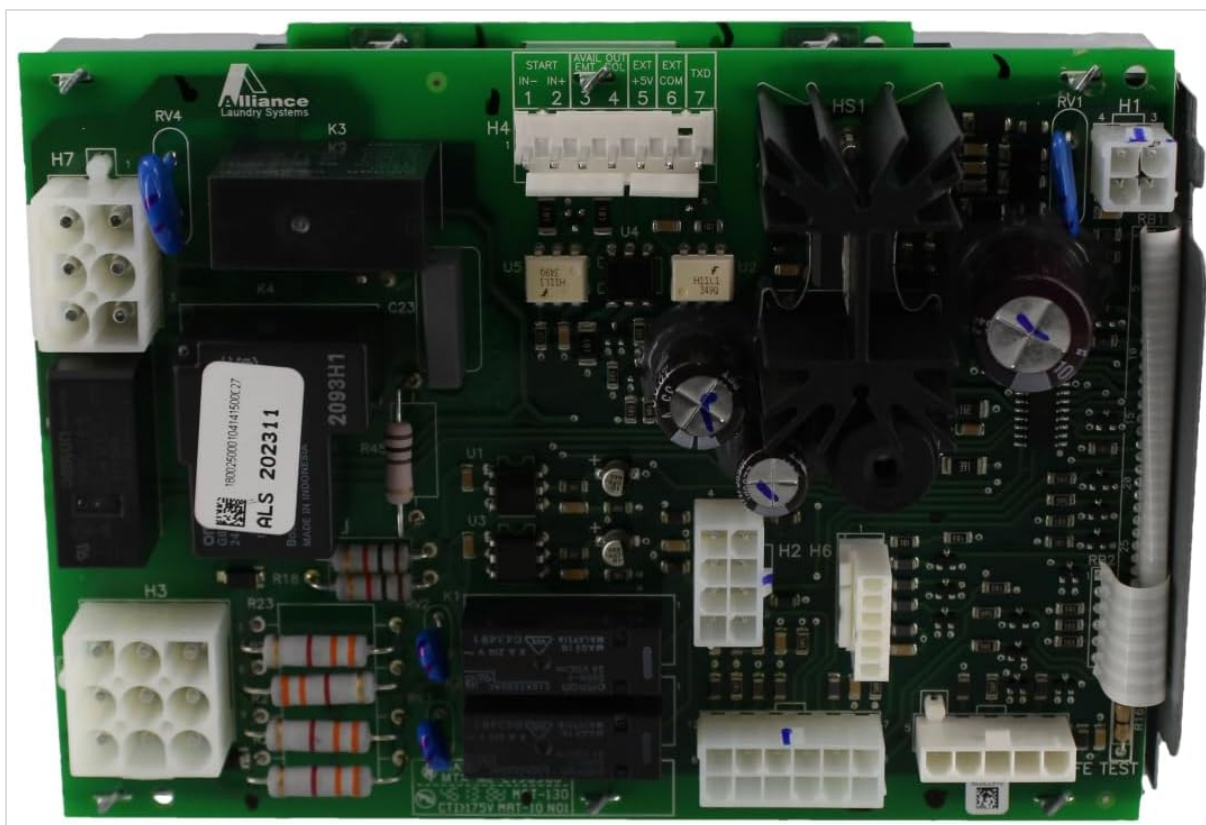


Figure 1: ALLIANCE LAUNDRY SYSTEMS Washer Control Board Assembly (Model 202311P).

This image displays the green circuit board with various electronic components. Visible elements include multiple white plastic connectors (H7, H4, H1, H2, H6, H3) for wiring harnesses, several black relays (K3, K4), capacitors, resistors, and integrated circuits (U1, U2, U3, U4, U5). A heatsink (HS1) is present for thermal management. A label on one of the components reads "ALS 202311" and "MADE IN INDONESIA". The board features clearly marked connection points such as "START", "IN-", "IN+", "AVAIL OUT", "EMT", "COL", "EXT", "EXT", "+5V COM", and "TXD".

4. INSTALLATION (SETUP)

This control board is intended for installation in compatible Alliance Laundry Systems washers. Professional installation is highly recommended due to the electrical nature of the component and the complexity of appliance repair.

4.1. Required Tools and Materials

- Screwdrivers (Phillips and flathead)
- Nut drivers or socket set (if applicable)
- Needle-nose pliers
- Multimeter (for testing, optional but recommended)
- Work gloves
- Safety glasses

4.2. Installation Procedure

1. **Disconnect Power:** Unplug the washer from the electrical outlet or turn off the circuit breaker supplying power to the appliance. Verify power is off using a multimeter.
2. **Access Control Board:** Depending on your washer model, this may involve removing the top panel, front panel, or rear access panel. Refer to your specific washer's service manual for detailed access instructions.
3. **Document Connections:** Before disconnecting any wires, take clear photographs or make detailed diagrams of all wiring connections to the existing control board. Pay close attention to the orientation

and color coding of each wire.

4. **Disconnect Old Board:** Carefully disconnect all wiring harnesses and mounting screws securing the old control board.
5. **Install New Board:** Position the new ALLIANCE LAUNDRY SYSTEMS Control Board (Model 202311P) in the same location as the old one. Secure it with the appropriate mounting screws.
6. **Reconnect Wiring:** Using your photographs or diagrams, carefully reconnect all wiring harnesses to the corresponding connectors on the new control board. Ensure each connection is firm and fully seated.
7. **Reassemble Washer:** Reattach any panels or covers that were removed to access the control board.
8. **Restore Power and Test:** Plug the washer back into the electrical outlet or turn on the circuit breaker. Perform a test cycle to ensure the washer functions correctly. Observe for any unusual noises, smells, or error codes.

5. OPERATION

The control board itself does not have user-operable controls. Its function is to interpret commands from the user interface (e.g., cycle selection, start/pause buttons) and manage the various components of the washer, such as the motor, water valves, drain pump, and heating elements, to execute the selected wash cycle.

Upon successful installation, the washer should resume normal operation according to its original design specifications. Refer to your washer's user manual for instructions on selecting wash cycles and operating the appliance.

6. MAINTENANCE

The ALLIANCE LAUNDRY SYSTEMS Control Board (Model 202311P) is a sealed electronic component and generally requires no routine maintenance. However, periodic inspection of the surrounding area and connections can help ensure its longevity.

- **Keep Dry:** Ensure the area around the control board remains dry and free from moisture, which can cause electrical shorts and damage.
- **Inspect Connections:** Periodically, with power disconnected, visually inspect the wiring harnesses connected to the board for any signs of corrosion, looseness, or damage.
- **Cleanliness:** If dust or debris accumulates on the board, gently remove it using a soft brush or compressed air (with power disconnected). Avoid using liquids or harsh chemicals.

7. TROUBLESHOOTING

If the washer experiences issues after the control board replacement, consider the following troubleshooting steps. Always disconnect power before inspecting internal components.

- **No Power:**
 - Check the main power supply to the washer (outlet, circuit breaker).
 - Verify all wiring connections to the control board are secure.
- **Incorrect Cycle Operation / Error Codes:**
 - Ensure all wiring harnesses are connected to the correct ports on the control board.
 - Consult your washer's specific service manual for error code definitions and diagnostic

procedures.

- A component other than the control board might be faulty (e.g., motor, water valve, sensor).

- **Partial Functionality:**

- Re-check all connections for looseness or incorrect placement.
- Inspect the wiring harnesses themselves for damage.

If issues persist after troubleshooting, it is recommended to contact a qualified appliance repair technician or Alliance Laundry Systems customer support for further assistance.

8. SPECIFICATIONS

Part Number	202311P
Description	Assy Control TLW C4 RoHS, Pkg
Brand	ALLIANCE LAUNDRY SYSTEMS
Compatibility	Fits Alliance Laundry Systems Washer
Replaces Part Numbers	201967P, 202311, 201967
Item Weight	2.29 pounds
Package Dimensions	12.75 x 8.1 x 6.35 inches
Item Package Quantity	1
ASIN	B0CXRLQK5R
Date First Available	March 11, 2024

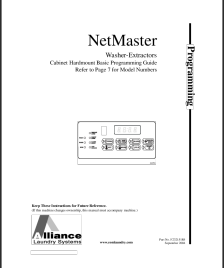
9. WARRANTY AND SUPPORT


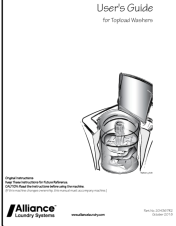
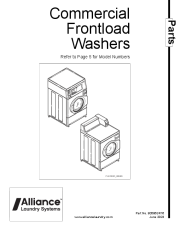

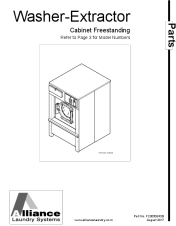
Specific warranty terms for the ALLIANCE LAUNDRY SYSTEMS Washer Control Board Assembly (Model 202311P) are typically provided by the manufacturer or the authorized seller at the time of purchase.

Please retain your proof of purchase for warranty claims.

For technical support, warranty inquiries, or to locate authorized service providers, please contact Alliance Laundry Systems directly or the retailer from whom the part was purchased. Refer to their official website or documentation for contact information.

Related Documents - 202311P

	<p>NetMaster Washer-Extractors: Basic Programming Guide</p> <p>This guide details programming for Alliance Laundry Systems' NetMaster washer-extractors, covering cycle configuration, vend prices, special features, and diagnostics for commercial laundry operations.</p>
---	--

	<p>Alliance Laundry Systems Washer-Extractor Parts Manual</p> <p>Comprehensive parts manual for Alliance Laundry Systems Washer-Extractor models, including detailed diagrams and part numbers for various components.</p>
	<p>Alliance Laundry Systems Topload Washer User's Guide</p> <p>Comprehensive user guide for Alliance Laundry Systems topload washers, covering safety, operation, clothing care, maintenance, and troubleshooting. Includes detailed instructions and important safety information.</p>
	<p>Alliance Laundry Systems Commercial Frontload Washers Parts Manual</p> <p>Detailed parts manual for Alliance Laundry Systems commercial frontload washers, featuring model identification, assembly diagrams, and part numbers for maintenance and repair.</p>
	<p>Alliance Laundry Systems Frontload Washer User's Guide - Operation and Maintenance</p> <p>This user's guide provides comprehensive instructions for operating, maintaining, and troubleshooting Alliance Laundry Systems frontload washers. Learn about safety precautions, control panel functions, wash cycles, and common issues.</p>
	<p>Alliance Laundry Systems Washer-Extractor Parts Manual</p> <p>Official parts manual for Alliance Laundry Systems Cabinet Freestanding Washer-Extractor models, including BF35PV, BF50PV, BF85PV, SF35PV, SF50PV, SF85PV, UF35PV, UF50PV, and UF85PV. Contains detailed diagrams and part numbers for maintenance and repair.</p>