

## Valera 55010002

# Valera Ultimate AI NightBlack User Manual

Model: 55010002

## INTRODUCTION

This manual provides essential information for the safe and effective use of your Valera Ultimate AI NightBlack hair dryer. Please read all instructions carefully before using the appliance and retain this manual for future reference.

The Valera Ultimate AI NightBlack is designed to provide professional-grade hair drying, ensuring healthy, shiny, and beautiful hair. It incorporates advanced technology for optimal performance and user comfort.

## IMPORTANT SAFETY INFORMATION

**WARNING:** Always observe proper use of the power cable to avoid the risk of electric shock. Do not use this appliance near water, in a bathroom, or near any other vessel containing water. Always unplug the appliance immediately after use.

- Ensure the voltage indicated on the appliance corresponds to your local mains voltage before connecting.
- Do not use the appliance with wet hands.
- Keep the appliance away from heat sources and direct sunlight.
- Do not block the air inlets or outlets during operation.
- This appliance is not intended for use by persons (including children) with reduced physical, sensory or mental capabilities, or lack of experience and knowledge, unless they have been given supervision or instruction concerning use of the appliance by a person responsible for their safety.
- Children should be supervised to ensure that they do not play with the appliance.
- If the supply cord is damaged, it must be replaced by the manufacturer, its service agent, or similarly qualified persons in order to avoid a hazard.

## SETUP

### Unboxing

Carefully remove the Valera Ultimate AI NightBlack hair dryer and all accessories from its packaging. Inspect the appliance for any signs of damage. If any damage is found, do not use the appliance and contact customer support.

### Connecting to Power

Plug the power cord into a suitable electrical outlet. Ensure the outlet meets the power requirements specified on the appliance label.



Image: The Valera Ultimate AI NightBlack hair dryer, showcasing its sleek black design and ergonomic handle. This is the main product image.

## OPERATING INSTRUCTIONS

---

### Powering On/Off

Locate the power switch on the handle of the hair dryer. Slide the switch to the "ON" position to start the appliance and to the "OFF" position to turn it off.

### Adjusting Temperature and Airflow

The Valera Ultimate AI NightBlack features multiple heat and speed settings. Use the dedicated buttons or switches on the handle to adjust the temperature (cool, warm, hot) and airflow speed (low, medium, high) according to your styling needs.

### Using Attachments

Attach the desired nozzle or diffuser by aligning it with the front of the hair dryer and twisting or pushing until it clicks into place. Ensure attachments are securely fastened before use.

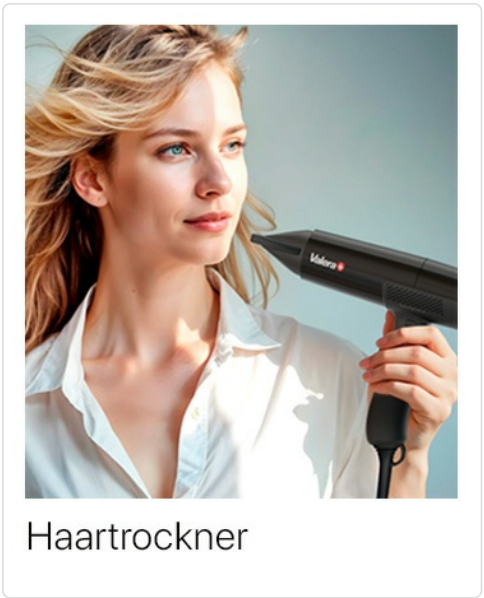


Image: A woman demonstrating the use of a Valera hair dryer, highlighting its ergonomic design and ease of handling during styling.

## MAINTENANCE

### Cleaning the Air Filter

Regularly clean the air filter located at the rear of the hair dryer to maintain optimal performance and prevent overheating. Turn off and unplug the appliance before cleaning. Remove the filter cover, gently brush away any dust or lint, and then reattach the cover.

### Storage

Store the hair dryer in a cool, dry place, away from direct sunlight and moisture. Do not wrap the power cord tightly around the appliance, as this can damage the cord.

## TROUBLESHOOTING

Problem	Possible Cause	Solution
Hair dryer does not turn on.	No power supply; faulty power cord; internal malfunction.	Check power outlet; inspect power cord for damage; contact customer support if problem persists.
Weak airflow or overheating.	Blocked air filter; blocked air inlets/outlets.	Clean the air filter; ensure air inlets/outlets are clear.
Unusual noise during operation.	Debris inside the appliance; motor issue.	Turn off and unplug; check for visible debris; contact customer support if noise continues.

## SPECIFICATIONS

**Brand:** Valera  
**Model Number:** 55010002  
**ASIN:** B0CXPVPYC3  
**Color:** Black  
**Wattage:** 2000W

**Power Source:** Corded Electric  
**Hair Type Compatibility:** All  
**Product Dimensions:** 6 x 25.5 x 24 cm; 1.24 Kilograms  
**Manufacturer:** Ligo Electric SA  
**First Available Date:** March 11, 2024

WARRANTY AND SUPPORT

For warranty information and customer support, please refer to the warranty card included with your product or visit the official Valera website. You can also contact your retailer for assistance.

**Valera Brand Story:** Healthy, shiny, beautiful hair, as well as well-being, safety, and sustainable development, are the cornerstones of our universe. With expertise and passion, we dedicate ourselves to the development of our Valera hair care devices, trusted by professional stylists and demanding users. Valera, Swiss Hair Specialists since 1955.



Image: The official Valera brand logo, representing Swiss quality and expertise in hair care.



Image: A promotional image featuring a Valera hair dryer alongside a "Plus X Award" for best customer satisfaction, set against a red background.