

KDD B0CXPBQHTP

KDD Tablet Pillow Stand Instruction Manual

Model: B0CXPBQHTP

Brand: KDD

1. INTRODUCTION

The KDD Tablet Pillow Stand is designed to provide a comfortable and versatile viewing experience for your electronic devices. This manual provides essential information on the product's features, setup, operation, maintenance, and specifications to ensure optimal use.



Figure 1: KDD Tablet Pillow Stand in its upright position, supporting a tablet.

2. KEY FEATURES

- **Flexible Angle Adjustment:** The stand features a Velcro fastening system, allowing for flexible adjustment of viewing angles to suit various positions such as sitting, lying down, or reclining.
- **Foldable & Portable Design:** Lightweight and fully foldable, this stand is easy to carry and ideal for use at home or during travel in cars or planes.
- **High-Quality Material with Stylus Mount:** Constructed from soft, skin-friendly plush material that is easy to clean. It includes two integrated stylus holders on the side for convenient storage.
- **Multi-Scenario Use:** Ergonomically designed for comfort during reading, media consumption, web browsing, and watching movies. It can be used on kitchen tables, desks, lounge chairs, beds, or during travel.
- **Outstanding Compatibility:** Compatible with a wide range of devices from 4.7 to 12.9 inches, including tablets, mobile phones, Nintendo Switch, iPads (Pro, Air, Mini), Surface Pro series, iPhones (15, 14, 13,

12, 11 Pro Max Plus mini), and books.



Figure 2: Visual comparison highlighting the KDD stand's portability and adjustable features.

3. SETUP

1. **Unfold the Stand:** Gently unfold the pillow stand from its compact, folded position.
2. **Adjust the Angle:** The stand features a large Velcro strip on the back. Separate the Velcro fasteners to adjust the angle of the device support flap. Position the flap to your desired viewing angle and firmly press the Velcro together to secure it.
3. **Place Your Device:** Place your tablet, phone, e-reader, or book into the front groove of the stand. Ensure the device rests securely against the adjusted support flap.



Angles Adjustment

This tablet stand is multi-angle adjustable to provide you with a more comfortable viewing angle.

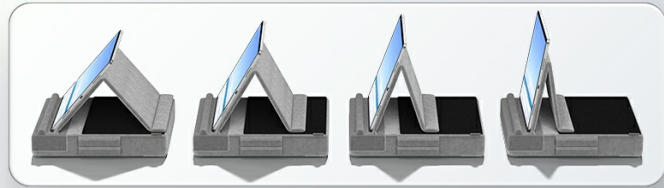


Figure 3: Illustration of the stand's adjustable angles for personalized viewing.

4. OPERATING INSTRUCTIONS

- **Device Placement:** The front lip of the stand is designed to hold devices securely. For optimal stability, ensure your device is centered and resting firmly in the groove.
- **Stylus Storage:** Utilize the two stylus holders located on the side of the stand to keep your stylus or pen within easy reach.
- **Usage Scenarios:** The stand is versatile for various environments. Place it on your lap while relaxing on a couch or bed, on a desk for hands-free viewing, or in a car or plane for entertainment during travel.

Your browser does not support the video tag.

Video 1: Demonstration of the KDD Multi-Angle Viewing iPad Holder for lap use, showcasing its stability and comfort.

Your browser does not support the video tag.

Video 2: Overview of the KDD Foldable & Multi-Angle Viewing iPad Pillow Holder, demonstrating its various features and portability.

5. MAINTENANCE

The outer cover of the KDD Tablet Pillow Stand is designed for easy cleaning. Locate the concealed zipper on the stand, unzip it, and remove the cover. The cover can be hand-washed or machine-washed on a gentle cycle with mild detergent. Air dry thoroughly before reattaching to the foam core.

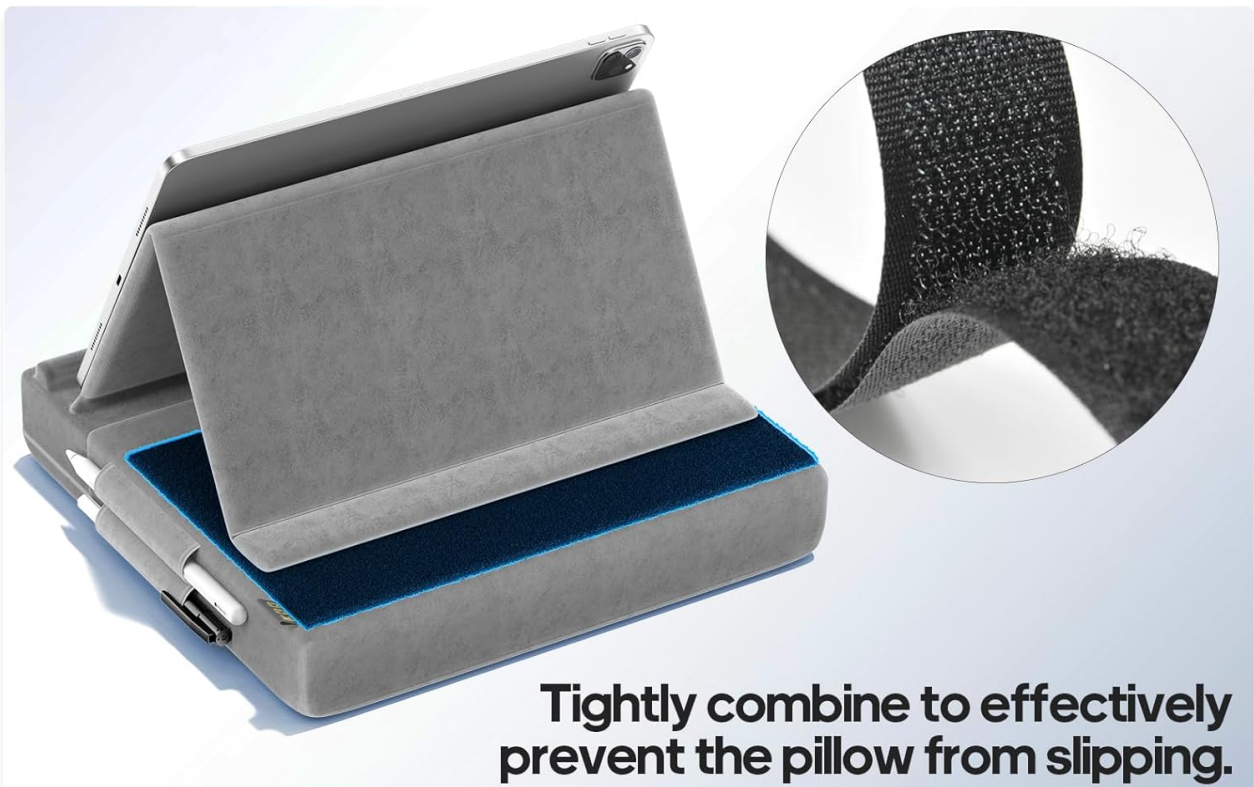


Figure 4: Detail of the soft, skin-friendly material and construction.

6. TROUBLESHOOTING

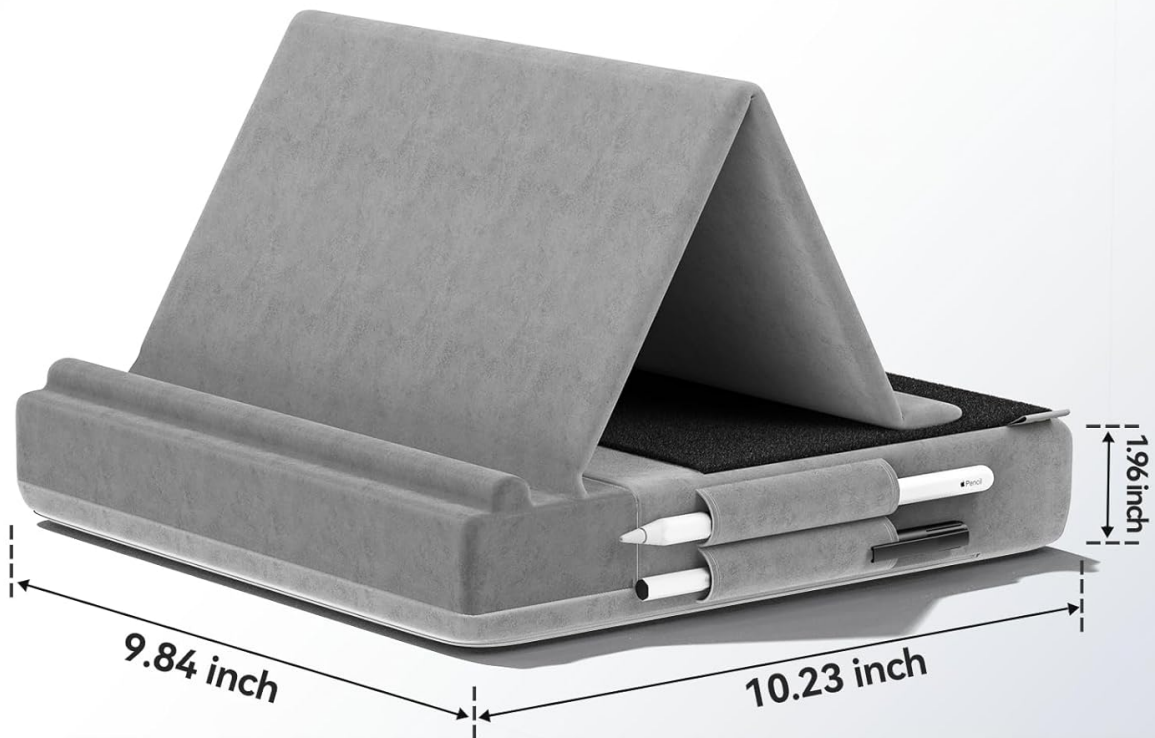
- **Device Slipping:** Ensure the Velcro fastening is securely engaged to maintain the desired angle. The front groove is designed to hold devices firmly; verify your device is properly seated.
- **Stylus Not Secure:** While the stylus holders are convenient, some styluses may fit loosely. Consider using a stylus with a clip or a slightly thicker stylus for a more secure fit if needed.

7. SPECIFICATIONS

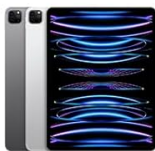
Attribute	Detail
-----------	--------

Brand	KDD
Model	B0CXPBQHTP
Color	Grey
Form Factor	Pillow
Compatible Devices	Tablets, Mobile Phones, Nintendo Switch, Books (4.7-12.9 inches)
Package Dimensions	10.43 x 10.04 x 3.03 inches
Item Weight	14.8 ounces
Manufacturer	KDD

Widely Compatible



Suitable for 4.7-12.9" devices



· Tablet



· Book



· Switch



· Cellphone

Figure 5: The stand demonstrating its wide compatibility with various devices.

8. WARRANTY AND SUPPORT

For any questions, concerns, or support needs regarding your KDD Tablet Pillow Stand, please refer to the contact information provided with your purchase or visit the official KDD website. Specific warranty details may vary; please consult your product packaging or the manufacturer's website for the most current information.