

## UKLISS DE-622-WHITE GOLD-32

# Ukliss 6-in-1 Air Styler Set Instruction Manual

Model: DE-622-WHITE GOLD-32

## 1. INTRODUCTION

---

Thank you for choosing the Ukliss 6-in-1 Air Styler Set. This versatile styling tool is designed to dry, straighten, curl, and volumize your hair with various interchangeable attachments. Please read this manual thoroughly before first use to ensure safe and effective operation. Keep this manual for future reference.

## 2. IMPORTANT SAFETY INSTRUCTIONS

---

- Always ensure your hands are dry before plugging in or unplugging the appliance.
- Do not use this appliance near water, in a bathroom, or over a sink.
- Keep the appliance away from children.
- The handle of the styler may become warm during use. This is normal.
- Always wear anti-scald gloves when changing the removable brush heads to prevent burns.
- During the first few minutes of use, a slight odor may be present. This is normal and will dissipate quickly.
- Do not block the air inlets or outlets during operation.
- Unplug the appliance immediately after use and before cleaning.
- Do not wrap the power cord around the appliance.

## 3. PACKAGE CONTENTS

---

Your Ukliss 6-in-1 Air Styler Set includes the following components:

- 1 x Main Styler Unit (Handle)
- 1 x Hairdryer Attachment
- 1 x Hair Straightener Brush

- 2 x Air Wrap Curlers (Left and Right)
- 1 x Round Brush
- 1 x Hot Air Brush (Volumizing Brush)

## 4. PRODUCT OVERVIEW

The Ukliss 6-in-1 Air Styler features a powerful 1000W motor and a 360° swivel cord for ease of use. It comes with six interchangeable attachments to achieve various hairstyles.



Image: Overview of the Ukliss 6-in-1 Air Styler Set, displaying the main unit and all six distinct attachments for various styling needs.

### Attachments:

- **Hairdryer Attachment:** For fast drying of wet hair.
- **Hair Straightener Brush:** For smoothing and straightening hair, adding shine.
- **Left/Right Air Wrap Curlers:** Utilizes the Coanda effect to automatically wrap hair for voluminous, natural curls.
- **Round Brush:** For drying, volumizing, and curling hair ends or bangs.
- **Hot Air Brush:** For volumizing and creating slightly curled ends and bangs.

## 5. SETUP

### Attaching and Detaching Accessories:

To attach an accessory, align the desired attachment with the main styler unit and push it firmly until it clicks into place. To detach, press and hold the release button on the main unit, then gently pull the attachment off. Always ensure the styler is unplugged and cool before changing attachments, and wear anti-scald gloves if the unit has been recently used.

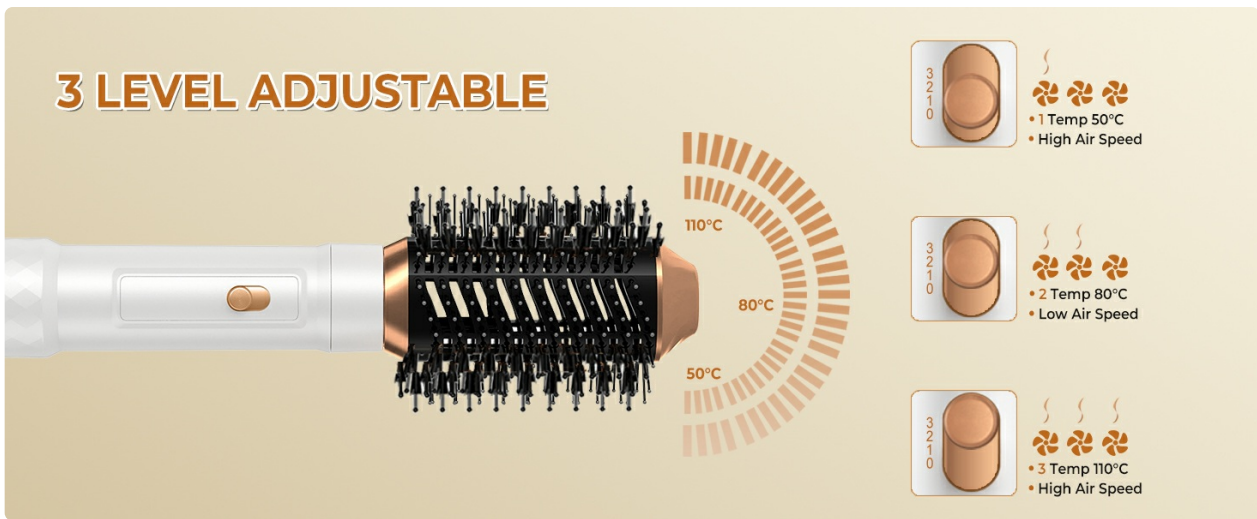


Image: Illustration demonstrating the one-click switch mechanism for easily attaching and detaching the styling heads from the main unit.

## 6. OPERATING INSTRUCTIONS

### Power and Temperature Settings:

The styler features 3 temperature settings and 1 wind speed setting, controlled by a switch on the handle:

- **Setting 1 (Low Temperature):** Approximately 50°C with high wind speed. Suitable for dry or fine hair, ideal for summer use.
- **Setting 2 (Medium Temperature):** Approximately 80°C with high wind speed. Suitable for semi-dry or normal hair, ideal for styling.
- **Setting 3 (High Temperature):** Approximately 110°C with high wind speed. Suitable for wet, thick, or curly hair, ideal for quick drying in winter.

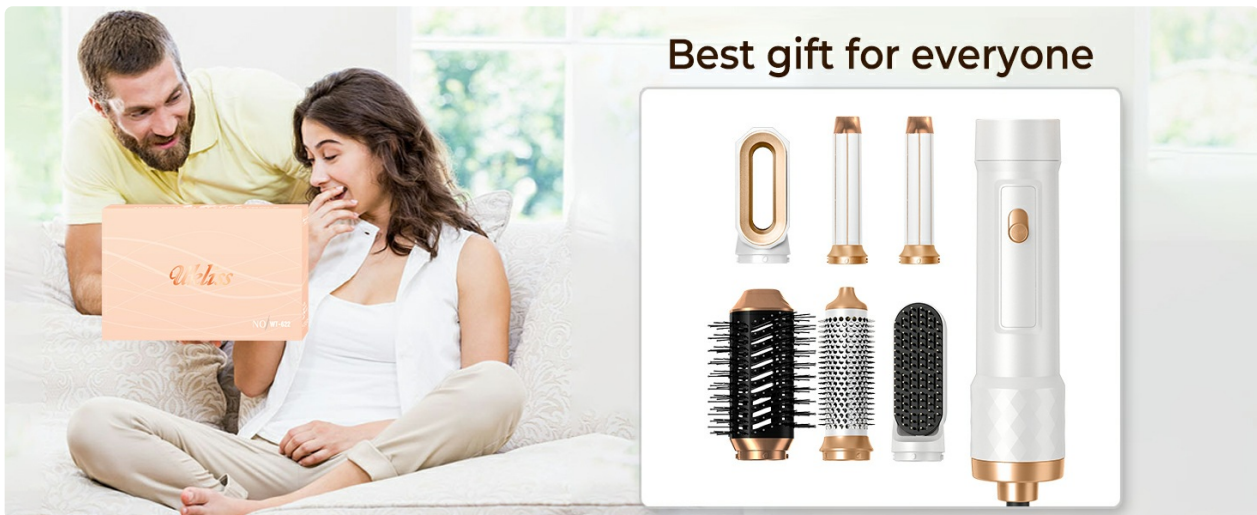


Image: Visual guide to the three temperature settings (50°C, 80°C, 110°C) and high wind speed, indicating their suitability for different hair conditions and seasons.

### Using the Hairdryer Attachment:

Select the hairdryer attachment for fast and efficient drying. Choose the appropriate temperature setting based on your hair type and desired drying speed.



Image: Step-by-step guide demonstrating the use of the hairdryer attachment for drying hair, showing different angles and temperature settings.

### Using the Hair Straightener Brush:

Attach the hair straightener brush. Begin with rough-dried or towel-dried hair. Section your hair as desired. For a smooth, sleek style, start by placing the brush close to the roots to engage the detangling bristles. Brush down your hair, ensuring the smoothing bristles gently grip the hair. Repeat on remaining sections until hair is dried into a smooth, straight style.



Image: Step-by-step instructions for using the hair straightener brush to achieve smooth, straight hair.

### Using the Left/Right Air Wrap Curlers:

Begin with dry hair, separated into 2-3 layers. Select the direction of the curls by choosing the corresponding Left or Right barrel. Hold the middle of a 1/2-inch to 1-inch section of hair. Let the ends dangle. Turn on the curling wand. Bring the barrel behind the dangling hair ends. The hair ends will automatically wrap around the barrel. Once the hair is wrapped, hold the styler in place for 10 seconds, then use the cool shot for at least 10 seconds. Repeat as needed.



Image: Detailed six-step guide illustrating how to use the left and right air wrap curlers to create curls, including tips for sectioning hair and using the cool shot.

## Using the Round Brush:

Attach the round brush. Begin with rough-dried or towel-dried hair. Section your hair as desired. For voluminous blowouts, start by placing the round brush under the hair close to the roots to engage the bristles. Brush the hair outwards. Repeat on remaining sections until hair has been dried into a bouncy, voluminous style.

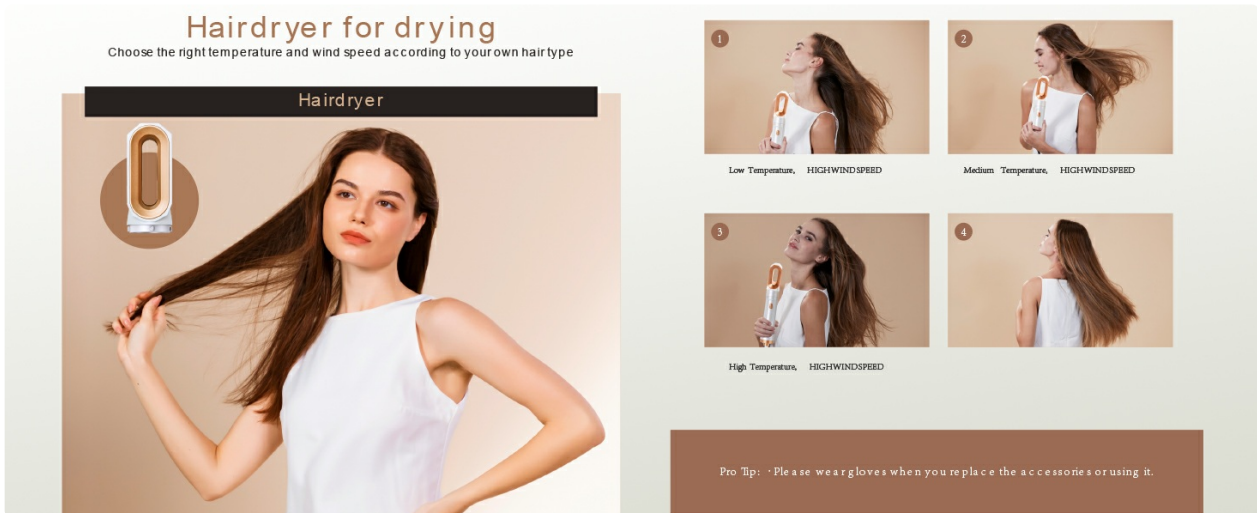


Image: Step-by-step instructions for using the round brush to add volume and shape to hair, showing how to engage bristles and brush outwards.

## Using the Hot Air Brush (Volumizing):

Attach the hot air brush. This brush is designed for drying and volumizing in one step, giving volume to the hairline and creating slightly curled ends or bangs. Brush through sections of hair from root to tip, lifting at the roots for added volume.



Image: Step-by-step guide for using the hot air brush to achieve volumized hair with curled ends, demonstrating brushing techniques.

## 7. MAINTENANCE AND CLEANING

- Always unplug the appliance and allow it to cool completely before cleaning.
- Wipe the main unit and attachments with a soft, damp cloth. Do not use abrasive cleaners or solvents.
- Regularly remove any hair or debris from the brush heads to maintain optimal performance.
- Ensure all parts are completely dry before storing.
- Store the appliance and its attachments in a dry place, away from direct sunlight and moisture.

## 8. TROUBLESHOOTING

- **Appliance not turning on:** Ensure the power cord is securely plugged into a working outlet. Check for any tripped circuit breakers.
- **Low airflow or heat:** Check if the air inlets or outlets are blocked by dust or hair. Clean them as described in the maintenance section.
- **Attachments not staying on:** Ensure the attachment is correctly aligned and pushed firmly until it clicks into place.
- **Unusual noise:** If the appliance makes an unusual noise, unplug it immediately and check for any obstructions in the air vents or attachments. If the noise persists, discontinue use.
- **Hair not curling/straightening effectively:** Ensure hair is properly sectioned and at the correct dampness (e.g., dry for curling, towel-dried for straightening). Adjust temperature settings as needed for your hair type.

## 9. SPECIFICATIONS

| Feature      | Specification        |
|--------------|----------------------|
| Brand        | UKLISS               |
| Model Number | DE-622-WHITE GOLD-32 |
| Power        | 1000 Watts           |

|                        |                       |
|------------------------|-----------------------|
| Temperature Settings   | 3 (50°C, 80°C, 110°C) |
| Wind Speed Settings    | 1 (High)              |
| Number of Attachments  | 6                     |
| Dimensions (L x W x H) | 28 x 20 x 8 cm        |
| Weight                 | 1.17 kg               |
| Power Source           | Corded Electric       |

## 10. WARRANTY AND SUPPORT

---

For warranty information or technical support, please refer to the documentation provided with your purchase or contact UKLISS customer service through the retailer where the product was purchased. Keep your proof of purchase for warranty claims.