

Remco KP5900H

Remco Master Kit Automatic Transmission 8F35 Instruction Manual

Model: KP5900H

1. PRODUCT OVERVIEW

This document provides essential instructions and information for the Remco Master Kit Automatic Transmission 8F35. This kit is specifically designed for rebuilding 8F35 automatic transmissions, ensuring reliable performance through the use of high-quality OEM components.

The Remco Master Kit is intended for professional use or by individuals with advanced mechanical expertise in automotive transmission systems.

2. PACKAGE CONTENTS

The Remco Master Kit Automatic Transmission 8F35 (Part No. KP5900H) contains all necessary OEM components required for a comprehensive rebuild of an 8F35 automatic transmission. The exact components included are selected from industry-leading suppliers to meet original equipment specifications. Upon receiving the kit, please verify that all components are present and undamaged before proceeding with installation.

3. INSTALLATION AND SETUP

Installation of the Remco Master Kit Automatic Transmission 8F35 requires specialized knowledge, tools, and experience in transmission rebuilding. It is highly recommended that installation be performed by a certified automotive technician.

- **Compatibility Verification:** Before commencing any work, verify that the 8F35 transmission model is compatible with your specific vehicle's year, make, and model. Refer to your vehicle's service manual for detailed compatibility information.
- **Service Manual Reference:** Always refer to the vehicle manufacturer's official service manual for the 8F35 transmission for detailed disassembly, inspection, cleaning, assembly, and torque specifications. This kit provides components; the manual provides the procedure.

- **Cleanliness:** Maintain an exceptionally clean work environment. Contaminants can severely impact transmission performance and longevity.
- **Component Inspection:** Thoroughly inspect all components from the kit for any manufacturing defects or shipping damage prior to installation.



***Image Description:** This image displays the complex internal structure of an automatic transmission, illustrating various gears, clutches, and hydraulic components. This Remco Master Kit provides the necessary parts for rebuilding such a unit, restoring its functionality and performance.*

4. POST-INSTALLATION AND OPERATION CHECKS

After the successful installation of the Remco Master Kit and reassembly of the 8F35 transmission, perform the following critical checks:

- **Fluid Level:** Fill the transmission with the manufacturer-specified fluid to the correct level. Follow the vehicle's service manual for the precise filling procedure and fluid type.
- **Leak Inspection:** Thoroughly inspect all seals, gaskets, and connections for any signs of fluid leaks.
- **Diagnostic Scan:** Perform a diagnostic scan to clear any old fault codes and ensure all sensors are functioning correctly.
- **Initial Drive Test:** Conduct a controlled test drive, paying close attention to shifting patterns, engagement, and any unusual noises or vibrations.

5. MAINTENANCE

Proper maintenance is essential for the longevity and optimal performance of your rebuilt 8F35 automatic transmission. Adhere strictly to the vehicle manufacturer's recommended maintenance schedule for:

- **Transmission Fluid Changes:** Regular fluid changes with the correct specification fluid are crucial.
- **Filter Replacement:** Replace the transmission filter(s) at recommended intervals.
- **Fluid Level Checks:** Periodically check the transmission fluid level and condition.

6. TROUBLESHOOTING

If you encounter any issues after the transmission rebuild, consider the following general troubleshooting steps. For complex problems, consult a qualified automotive technician.

- **Shifting Problems:** Check fluid level and condition. Verify proper installation of valve body components and electrical connections.
- **Leaks:** Re-inspect all seals, gaskets, and connections for proper seating and torque.
- **Unusual Noises:** Could indicate improper component assembly, worn bearings, or insufficient lubrication.
- **Diagnostic Trouble Codes (DTCs):** Use an OBD-II scanner to retrieve any stored codes, which can provide clues to the problem.

7. SPECIFICATIONS

Attribute	Detail
Product Name	Master Kit Automatic Transmission 8F35
Brand	Remco
Manufacturer	raybestos/precision or seal
Model Number (Manufacturer Part Number)	KP5900H
Item Weight	11 pounds
Product Dimensions	18 x 16 x 5 inches
ASIN	B0CXMPTX9V
Date First Available	February 8, 2023

8. WARRANTY AND SUPPORT

Warranty Information: Specific warranty details for the Remco Master Kit Automatic Transmission 8F35 are not provided in this document. Please refer to the product packaging or contact Remco customer service for warranty terms and conditions.

Return Policy: Returns are accepted only if the product is in its original, unopened packaging. Please ensure the kit is suitable for your application before opening.



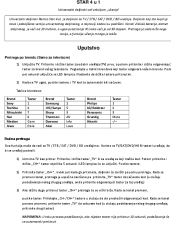
International Orders: Buyers are responsible for any import tax duties and expenses associated with

international orders.

Customer Support: For technical assistance, product inquiries, or support, please contact Remco customer service through their official channels.

© 2023 Remco. All rights reserved. This manual is for informational purposes only.

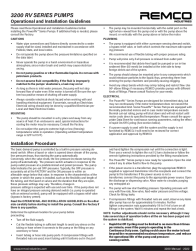
Related Documents - KP5900H

	<p>REMCO LP-HP023 Lube Pump Installation Instructions</p> <p>Detailed installation guide for the REMCO LP-HP023 Lube Pump and Plumbing Hardware Pack, designed for specific Toyota transmissions including Tacoma, Tundra, FJ Cruiser, and 4Runner models.</p>
	<p>REMCO Economy Plus 2200 2400 Pumps: Operational & Installation Manual</p> <p>Comprehensive operational and installation guidelines, specifications, dimensions, and troubleshooting for REMCO Economy Plus 2200 and 2400 series pumps. Includes parts list and warranty information for these affordable, high-quality industrial pumps.</p>
	<p>Remco STAR 4 u 1: Univerzalni Daljinski Upravljač - Uputstvo i Kodovi</p> <p>Saznajte kako da podesite i koristite vaš Remco STAR 4 u 1 univerzalni daljinski upravljač. Pronađite uputstva za pretragu kodova, funkciju učenja i rešavanje problema za TV, STB, SAT, DVD i BD uređaje.</p>



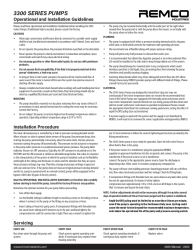
[REMCO ProFlo 3300, 5500, FatBoy Diaphragm Pumps: Operational, Installation, and Repair Manual](#)

Comprehensive operational, installation, troubleshooting, and parts guide for REMCO ProFlo 3300, 5500, and FatBoy diaphragm pumps. Includes performance charts, heat rise data, and standard warranty information.



[Remco 3200 RV Series Pumps: Operational and Installation Guidelines](#)

Comprehensive operational and installation guidelines for the Remco 3200 RV Series Pumps, covering mounting, plumbing, electrical, winterizing, troubleshooting, and warranty information.



[Remco 3300 Series Pumps: Operational and Installation Guidelines](#)

Comprehensive operational and installation guidelines for Remco 3300 Series pumps, covering safety precautions, mounting, plumbing, electrical connections, installation procedures, servicing, troubleshooting, warranty information, and replacement parts.