

## vidaXL 3205472

# vidaXL Genuine Leather Massage Recliner Chair - Instruction Manual

Model: 3205472

## 1. GENERAL INFORMATION AND SAFETY INSTRUCTIONS

Thank you for purchasing the vidaXL Genuine Leather Massage Recliner Chair. This manual provides essential information for the safe assembly, operation, and maintenance of your new chair. Please read all instructions carefully before use and retain this manual for future reference.

### Important Safety Precautions:

- Ensure all components are present and undamaged before assembly.
- Assemble the chair on a soft, clean surface to prevent scratches.
- Do not exceed the maximum weight capacity of **110 kg (242 lbs)**.
- Keep children and pets away from the chair during assembly and operation.
- Use only a certified 5V USB power adapter (not included) for the massage function.
- Avoid placing the chair near heat sources or in direct sunlight to prevent material damage.

## 2. SETUP AND ASSEMBLY

Assembly of this recliner chair is required. It arrives in multiple individual parts with numerous screws. Careful attention to the instructions is necessary. While pre-drilled holes are generally provided, some components may require precise alignment during assembly.

### Assembly Steps:

1. **Unpack Components:** Carefully remove all parts from the packaging. Verify that all components listed in the parts list (not provided in this manual, refer to packaging) are present.
2. **Base Assembly:** Attach the chair legs to the base frame. Ensure they are securely fastened.
3. **Seat and Backrest Connection:** Connect the backrest to the seat frame. Pay close attention to the alignment of connection points.
4. **Armrest Attachment:** Secure the armrests to the main chair body.
5. **Mechanism Integration:** Ensure the reclining mechanism is correctly integrated and moves freely.
6. **Final Checks:** Once assembled, gently test the chair's stability and reclining function before full use. Ensure all screws are tightened.

**Note:** If you encounter difficulties during assembly, it is recommended to seek assistance from another person or consult the detailed assembly instructions provided with the product packaging.



Image: The vidaXL cream massage recliner chair positioned in a modern living room, demonstrating its assembled appearance.

### 3. OPERATING INSTRUCTIONS

---

#### **Reclining Function:**

The chair features a manual reclining function. To recline, locate the button/lever on the right side of the chair. Pulling this handle will allow you to manually adjust the footrest and backrest to your desired position, up to a maximum recline of 135 degrees. To return the backrest to its upright position, simply pull the handle again.



Image: A sequence of illustrations demonstrating the manual reclining function, showing the chair moving from an upright position to a fully reclined position with the footrest extended.

### Vibration Massage Function:

The chair is equipped with a 6-point vibration massage function. This function is powered via a USB port. To activate and control the massage, use the included manual control unit. The control unit allows you to select different massage programs and intensity levels. Please note that a certified 5V USB power adapter is required and is **not included** with the chair.

- Connect the USB cable from the chair to a 5V USB power adapter.
- Use the handheld remote control to select your preferred massage program and intensity.
- The 6 massage points are strategically located to provide targeted vibration massage.



Image: Front view of the vidaXL cream massage recliner chair, with purple circles indicating the six vibration massage points on the backrest, lumbar area, and seat.

**Side Pocket:**

A convenient side pocket is integrated into the chair, ideal for storing the massage remote control or other small items within easy reach.



Image: A circular diagram showcasing various features of the recliner chair, including the remote control, recline lever, side pocket, armrest, and footrest.

## 4. MAINTENANCE

---

This recliner chair is upholstered in genuine leather, a durable and timeless material. Proper care and maintenance will ensure its longevity and preserve its elegant appearance.

### Leather Care:

- **Regular Cleaning:** Dust the leather regularly with a soft, dry cloth.
- **Spot Cleaning:** For spills, immediately blot with a clean, absorbent cloth. Do not rub. For stubborn stains, use a mild leather cleaner specifically designed for genuine leather, following the product instructions. Test on an inconspicuous area first.
- **Avoid Harsh Chemicals:** Do not use abrasive cleaners, solvents, or household detergents, as these can damage the leather.
- **Conditioning:** Periodically apply a leather conditioner to keep the leather supple and prevent drying or cracking.
- **Sunlight and Heat:** Avoid prolonged exposure to direct sunlight or placement near heat sources (e.g., radiators, fireplaces) as this can cause fading, drying, and cracking of the leather.

### General Maintenance:

- Periodically check and tighten all screws and fasteners to ensure the chair remains stable.

- Inspect the electrical cords for the massage function for any signs of damage. If damaged, discontinue use and contact customer support.

## 5. TROUBLESHOOTING

This section addresses common issues you might encounter with your recliner chair.

### Chair Does Not Recline:

- Ensure the recline lever on the right side is fully engaged and pulled.
- Check for any obstructions preventing the footrest or backrest from moving.
- Verify that all assembly connections related to the reclining mechanism are secure.

### Massage Function Not Working:

- Confirm that the USB cable is securely connected to both the chair and a functional 5V USB power adapter.
- Ensure the power adapter is plugged into a live electrical outlet.
- Check the remote control for proper connection and functionality.
- If using a power strip, ensure it is switched on.

### Chair Feels Unstable:

- Re-check all assembly screws and bolts, tightening any that are loose.
- Ensure the chair is placed on a flat, even surface.

If you continue to experience issues, please contact vidaXL customer support.

## 6. PRODUCT SPECIFICATIONS

Feature	Specification
Brand	vidaXL
Model Number	3205472
Color	Cream
Upholstery Material	Genuine Leather (100% cowhide)
Frame Material	Metal, Plywood
Filling Material	Foam, PP fiber
Overall Dimensions (L x D x H)	71 x 86.5 x 99.5 cm (27.8" x 34.1" x 39.2")
Reclined Dimensions (L x D x H)	71 x 144.5 x 82 cm (27.8" x 56.9" x 32.3")
Seat Width	47 cm (18.5")
Seat Depth	56.5 cm (22.2")
Seat Height from Ground	42-45 cm (16.5"-17.7")
Armrest Height from Ground	59 cm (23.2")

Feature	Specification
Massage Type	6-point vibration massage (no heating)
Input Voltage (Massage)	DC 5 V
Input Current (Massage)	2 A
Max. Load Capacity	110 kg (242 lbs)
Assembly Required	Yes
Item Weight	21.4 kg (47.2 lbs)
ASIN	B0CXM7NK1B

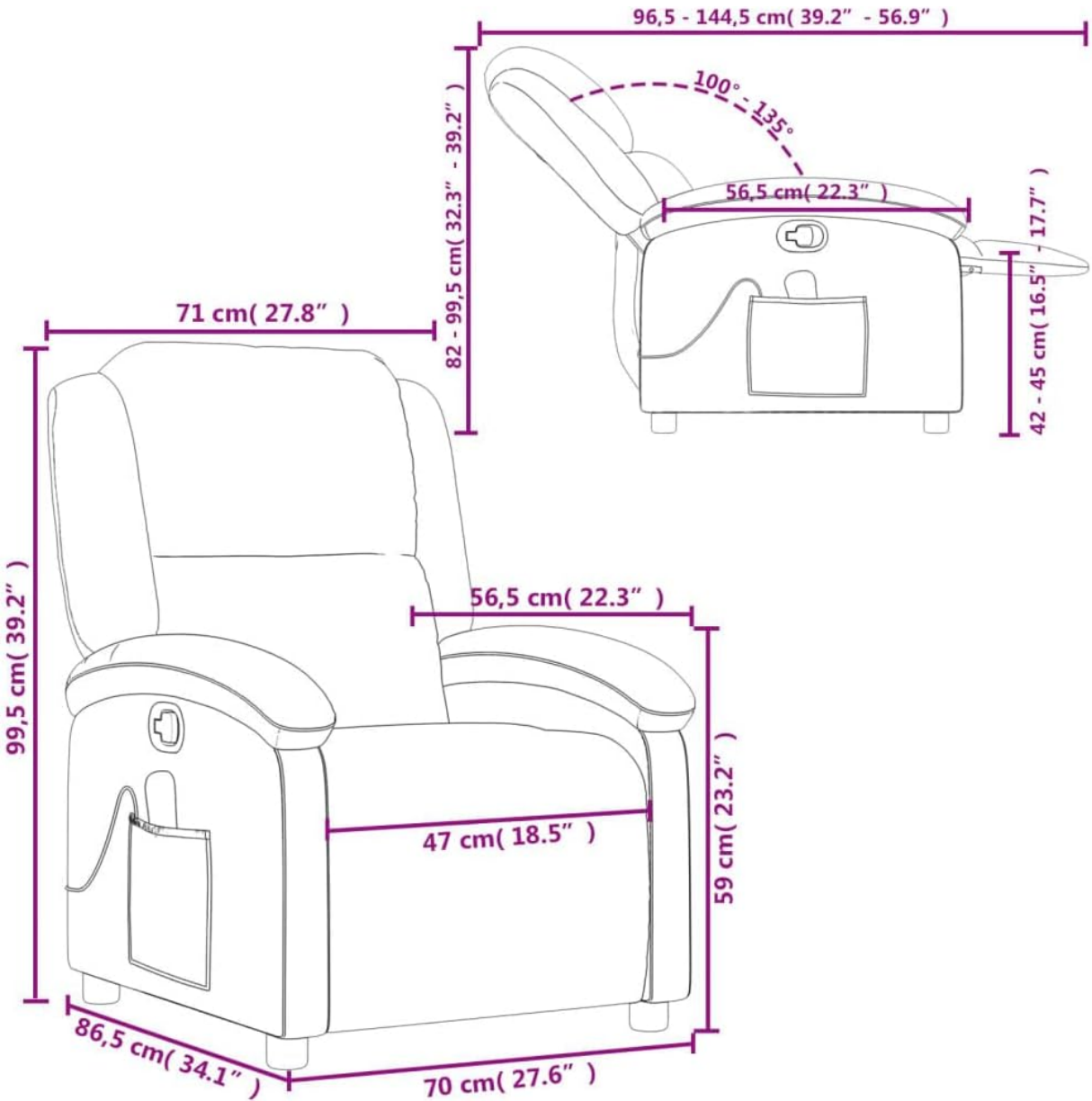


Image: A technical drawing illustrating the precise dimensions of the recliner chair in both upright and reclined positions, including width, depth, and height measurements.

## 7. WARRANTY AND SUPPORT

For information regarding warranty coverage, returns, or technical support, please refer to the

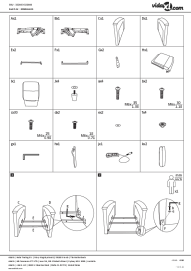
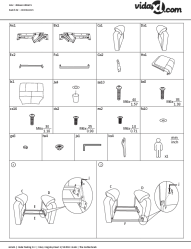

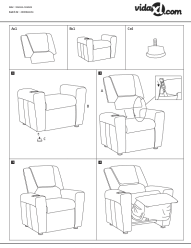


documentation included with your purchase or contact vidaXL customer service directly. Contact details can typically be found on the vidaXL website or your purchase receipt.

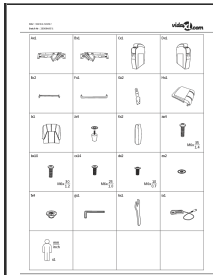
When contacting support, please have your model number (3205472) and ASIN (B0CXM7NK1B) readily available.

© 2025 vidaXL. All rights reserved.

Related Documents - 3205472

	<p><a href="#">vidaXL Recliner Chair Assembly and Safety Manual</a></p> <p>Comprehensive assembly instructions, safety guidelines, and technical specifications for the vidaXL Recliner Chair with massage function. Includes part identification and step-by-step assembly.</p>
	<p><a href="#">vidaXL Recliner Assembly Instructions</a></p> <p>Assembly guide for the vidaXL recliner, including parts list and step-by-step instructions.</p>
	<p><a href="#">VidaXL Extended Producer Responsibility (EPR) Guide</a></p> <p>Learn about VidaXL's commitment to Extended Producer Responsibility (EPR) for EEE and textile waste. Discover recycling information, obligations, and partners.</p>
	<p><a href="#">VidaXL Recliner Assembly Instructions</a></p> <p>Assembly instructions for VidaXL recliners, including models Ax1, Bx1, and Cx4. This guide provides step-by-step visual instructions for assembling the recliner chair.</p>
	<p><a href="#">vidaXL Folding Garden Chair Assembly Instructions</a></p> <p>Assembly instructions for the vidaXL folding garden chair, including a parts list and step-by-step visual guides.</p>





[VidaXL Recliner Assembly Instructions and Safety Guide](#)

Comprehensive guide for assembling your vidaXL recliner, including a parts list, step-by-step instructions, and essential safety information and technical specifications.