



[Manuals.plus](#) /

> [JENABOM](#) /

> JENABOM Mini Cordless Rotary Tool User Manual

JENABOM TY-CM01

JENABOM Mini Cordless Rotary Tool User Manual

Model: TY-CM01

1. INTRODUCTION

Thank you for choosing the JENABOM Mini Cordless Rotary Tool. This versatile tool is designed for various crafting, DIY, and light-duty tasks such as sanding, polishing, drilling, and engraving. Its compact size, cordless operation, and USB charging capability make it convenient for both beginners and experienced users. Please read this manual thoroughly before operation to ensure safe and efficient use of the tool.

Safety Information

- Always wear appropriate personal protective equipment, including safety glasses, when operating the tool.
- Keep the work area clean and well-lit. Cluttered or dark areas invite accidents.
- Do not operate power tools in explosive atmospheres, such as in the presence of flammable liquids, gases, or dust.
- Keep children and bystanders away while operating a power tool. Distractions can cause you to lose control.
- Avoid unintentional starting. Ensure the switch is in the off-position before connecting to battery pack, picking up or carrying the tool.
- Do not overreach. Keep proper footing and balance at all times. This enables better control of the power tool in unexpected situations.
- Disconnect the battery pack from the power tool before making any adjustments, changing accessories, or storing power tools.
- Use the power tool, accessories and tool bits etc. in accordance with these instructions, taking into account the working conditions and the work to be performed.
- Maintain power tools. Check for misalignment or binding of moving parts, breakage of parts and any other condition that may affect the power tool's operation. If damaged, have the power tool repaired before use.
- Use only with the specified USB charging cable and power adapter.

2. PACKAGE CONTENTS

Verify that all items are present in your package:

- JENABOM Mini Cordless Rotary Tool (Model: TY-CM01)
- USB Charging Cable
- Grinding Heads (5 pcs)
- Rubber Wheels (6.3mm x 1, 12.7mm x 1)
- Sand Rings (6.3mm x 4, 12.7mm x 4)
- Plastic Storage Box



Figure 2.1: Contents of the JENABOM Mini Cordless Rotary Tool kit, including the tool, USB cable, various grinding heads, rubber wheels, and sand rings, all neatly organized in a plastic storage box.

3. PRODUCT OVERVIEW AND PARTS IDENTIFICATION

Familiarize yourself with the different parts of your rotary tool:

3.6V

Lithium battery small electric mill

Power type

Battery powered

Electric Mill voltage

3.6V

Tap position adjustment

Three-gear adjustment

Clamping range

1-3mm

Net weight of machine

100g



Figure 3.1: Labeled components of the rotary tool. Key parts include the Chuck, Main Shaft Lock Switch, Cooling Port, Tap Position Indicator Light, Power Switch (with 3-gear adjustment), and USB Charging Port.

- **Chuck:** Holds the various accessories securely.
- **Main Shaft Lock Switch:** Used to lock the shaft for easy accessory changes.
- **Cooling Port:** Helps dissipate heat during operation.
- **Tap Position Indicator Light:** Indicates the current speed setting.
- **Power Switch / 3-Gear Adjustment:** Turns the tool on/off and cycles through speed settings.
- **USB Charging Port:** For connecting the USB charging cable.

4. SPECIFICATIONS

Feature	Specification
Model Number	TY-CM01
Brand	JENABOM
Power Type	Battery Powered (Cordless)
Battery Type	1 Lithium-ion (included)
Voltage	3.7 Volts
Speed Settings	3 Gears (Variable Speed)
Minimum Speed	5000 RPM
Maximum Speed	15000 RPM
Clamping Range (Collet Size)	1-3mm
Net Weight	200 Grams
Included Accessories	15 pieces (Grinding heads, rubber wheels, sand rings)
Special Features	Cordless, Variable Speed, Compact, USB Charging



Figure 4.1: Visual representation of the tool's three-speed adjustment (5000, 10000, 15000 RPM) and the collet system with a 1-3mm clamping range.

5. SETUP

5.1 Charging the Tool

Before first use, fully charge the rotary tool. The tool features USB fast charging.

1. Locate the USB charging port on the tool (refer to Figure 3.1).
2. Connect the provided USB charging cable to the tool's charging port.
3. Connect the other end of the USB cable to a compatible USB power adapter (not included) or a computer USB port.
4. The indicator lights will show charging status. Once fully charged, the lights will indicate completion (refer to tool's specific light behavior for full charge).

USB Fast Charging

Lithium battery small electric mill



3 Gears Power Adjustment



5000
/min



10000
/min



15000
/min

Figure 5.1: The rotary tool connected via USB for charging, illustrating the fast charging capability and the 3-gear power adjustment indicators.



Figure 5.2: The rotary tool connected to a wall adapter for USB charging.

5.2 Installing Accessories

Follow these steps to safely install or change accessories:

1. **Step 1:** Press down the main shaft lock switch (located near the chuck) and unscrew the chuck counter-clockwise until it is loose enough to insert an accessory.
2. **Step 2:** Insert the desired accessory into the chuck. Ensure the accessory shaft is fully seated.
3. **Step 3:** While still holding down the main shaft lock switch, tighten the chuck clockwise until the accessory is firmly secured. Release the lock switch.

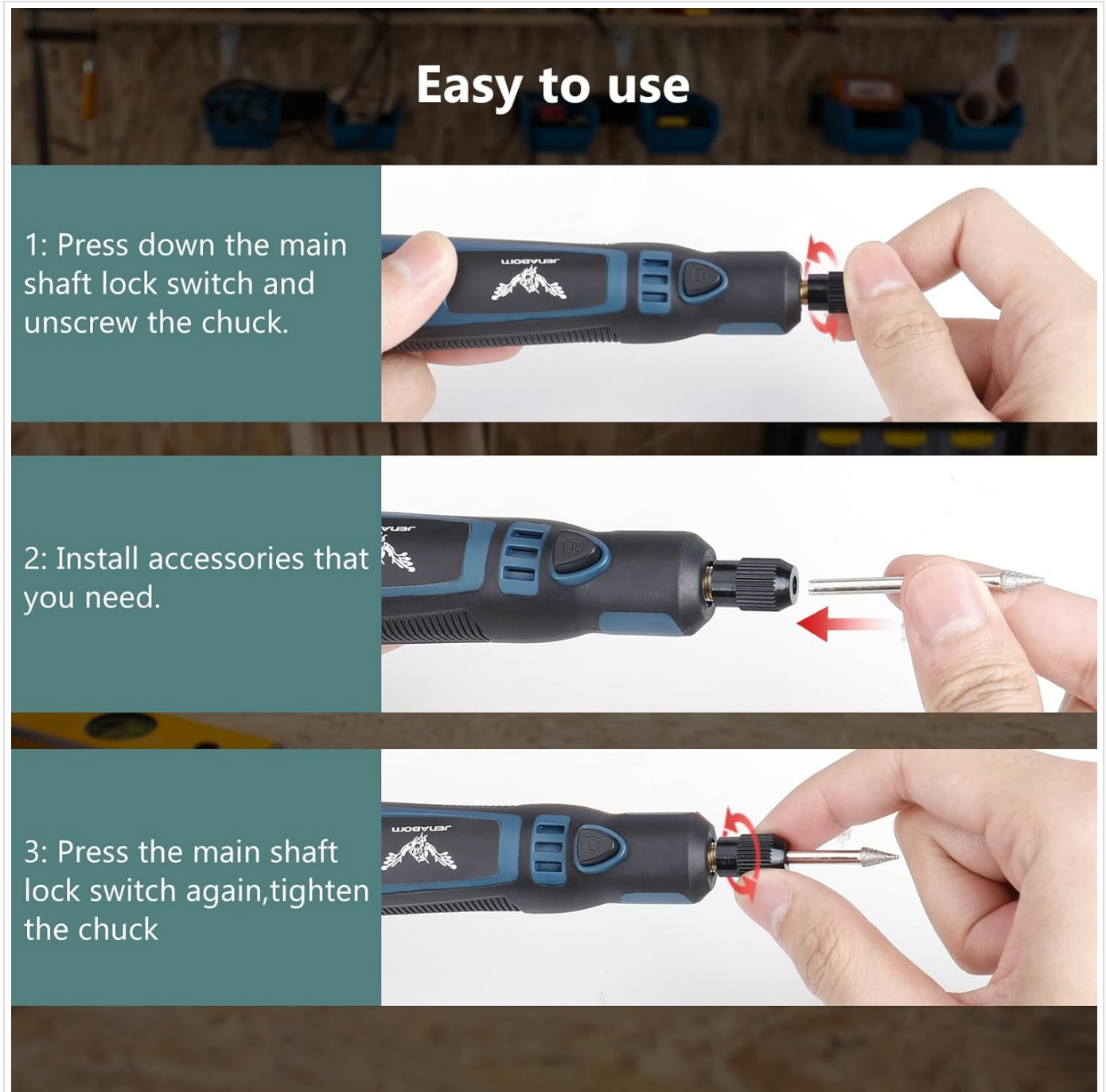


Figure 5.3: Step-by-step instructions for installing accessories: 1. Press shaft lock and unscrew chuck. 2. Insert accessory. 3. Tighten chuck while holding lock.

Ensure the accessory is securely fastened before operating the tool to prevent injury or damage.

6. OPERATING INSTRUCTIONS

6.1 Powering On/Off and Speed Adjustment

1. To turn the tool ON, press the Power Switch button. The tool will start at the lowest speed setting (5000 RPM).
2. To increase the speed, press the Power Switch button again. Each press will cycle through the speed settings: 5000 RPM (first gear), 10000 RPM (second gear), and 15000 RPM (third gear). The tap position indicator lights will illuminate accordingly.
3. To turn the tool OFF, press the Power Switch button after the highest speed setting, or press and hold the button for a few seconds.



Figure 6.1: Key features of the tool, highlighting the multi-speed switch for precise control and its compact, pen-like design for comfortable handling.



Figure 6.2: The tool's design ensures high concentricity, allowing it to hold accessories firmly without jumping or shaking during operation, which is crucial for precision tasks.

6.2 Applications

The JENABOM Mini Cordless Rotary Tool is suitable for a variety of tasks. Always select the appropriate accessory and speed for the material and task at hand.

- **Polishing:** Use polishing accessories to achieve a smooth, shiny finish on various surfaces.
- **Sanding:** Utilize sand rings for smoothing rough edges, shaping, or preparing surfaces for finishing.
- **Drilling:** With appropriate drill bits, the tool can be used for small, precise drilling tasks in soft materials.
- **Engraving:** Engraving bits allow for detailed work on wood, plastic, and soft metals.
- **Cutting:** Small cutting discs can be used for light cutting of thin materials.
- **Rust Removal:** Wire brushes or abrasive accessories can help remove rust from small metal objects.

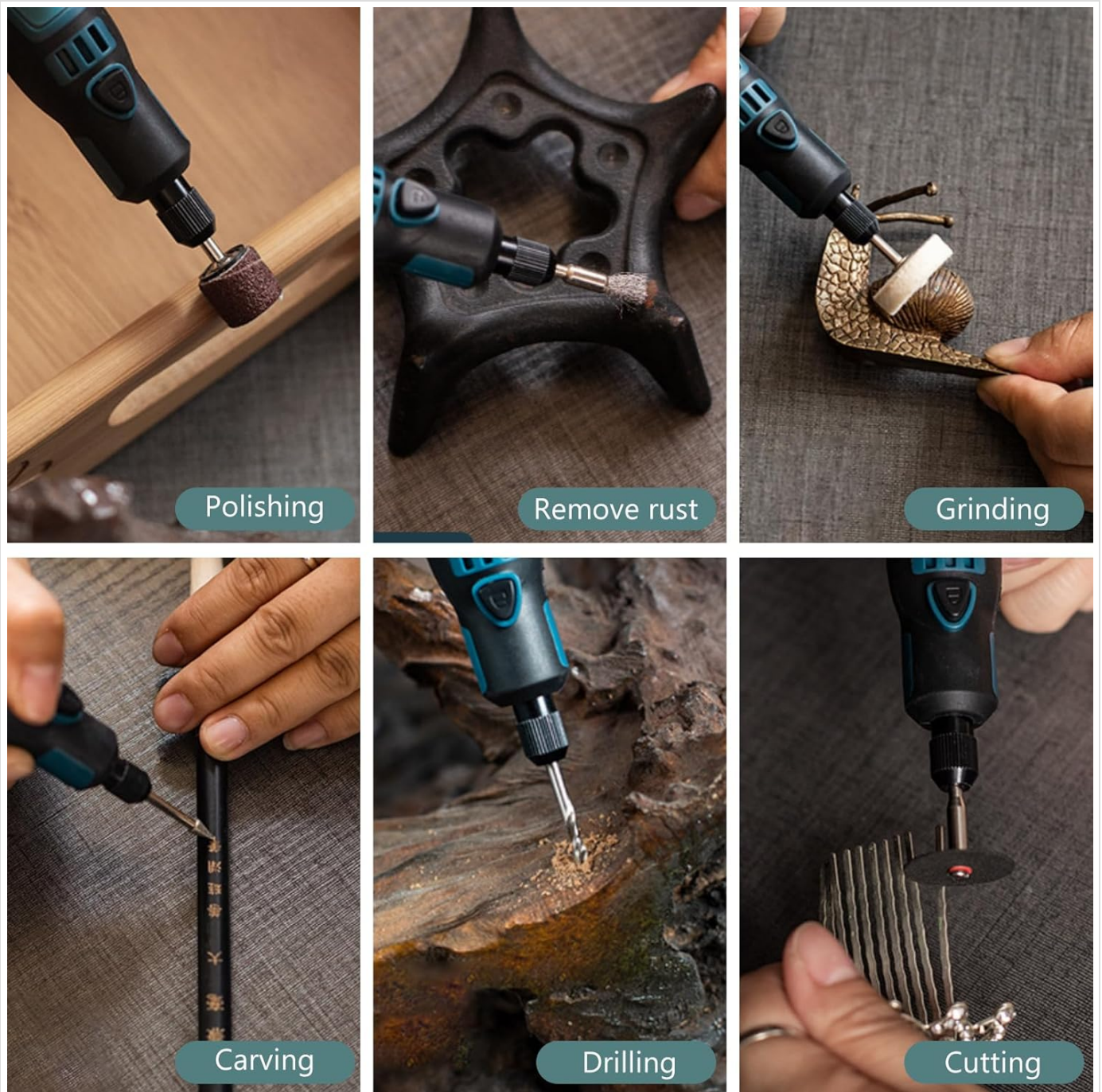


Figure 6.3: Examples of the tool's diverse applications, including polishing, rust removal, grinding, carving, drilling, and cutting, demonstrating its multifunctionality.



Figure 6.4: The tool in use, demonstrating its suitability for intricate and detailed craft work due to its compact size and precise control.

7. MAINTENANCE

Proper maintenance ensures the longevity and optimal performance of your rotary tool.

- **Cleaning:** After each use, wipe down the tool with a clean, dry cloth to remove dust and debris. Do not use harsh chemicals or abrasive cleaners.
- **Accessory Care:** Clean accessories after use. Store them in the provided plastic box to prevent loss and damage.
- **Storage:** Store the tool and accessories in a cool, dry place, away from direct sunlight and moisture. Keep out of reach of children.
- **Battery Care:** For long-term storage, charge the battery to approximately 50% to prolong its lifespan. Recharge every 3-6 months if not in use.

8. TROUBLESHOOTING

If you encounter issues with your JENABOM Mini Cordless Rotary Tool, refer to the following common problems and solutions:

Problem	Possible Cause	Solution
Tool does not turn on.	Battery is depleted.	Charge the tool fully using the provided USB cable.
Accessory is loose or wobbles.	Chuck not tightened sufficiently. Incorrect accessory size.	Ensure the chuck is tightened firmly while holding the main shaft lock switch. Verify accessory shaft diameter is within 1-3mm.
Tool stops during operation.	Overload or low battery.	Reduce pressure on the tool. Charge the battery if low.
Reduced performance/power.	Low battery. Accessory is dull or worn.	Recharge the tool. Replace worn accessories.
Tool gets hot.	Prolonged use or heavy load. Blocked cooling ports.	Allow the tool to cool down. Ensure cooling ports are clear of debris.

If the problem persists after trying these solutions, please contact JENABOM customer support for further assistance.

9. WARRANTY AND SUPPORT

JENABOM products are manufactured with quality and reliability in mind. For information regarding warranty coverage, technical support, or replacement parts, please refer to the contact information provided with your purchase or visit the official JENABOM website. Please have your model number (TY-CM01) and purchase details ready when contacting support.