



[Manuals.plus](#) /

› [MAXDONE](#) /

› MAXDONE Trail Camera PH820 User Manual

## MAXDONE PH820

# MAXDONE Trail Camera PH820 User Manual

Model: PH820 | Brand: MAXDONE

## INTRODUCTION

---

The MAXDONE PH820 Trail Camera is a high-performance device designed for capturing wildlife and monitoring outdoor areas. Featuring 28MP image resolution and 1520P video capabilities, it delivers clear and detailed visuals. Its robust IP66 waterproof design ensures reliable operation in various weather conditions, while advanced night vision and rapid 0.2s trigger time ensure you capture every moment.



Figure 1: MAXDONE PH820 Trail Camera

## PACKAGE CONTENTS

---

Please check the package to ensure all items are present:

- 1x MAXDONE PH820 Trail Camera
- 1x Stand Mount & Stand Support
- 3x Bolts & Stoppers
- 1x Micro USB Cable
- 1x Installation Belt
- 1x User Guide
- 1x 32GB SD card
- *Note: 8x AA batteries are required but not included.*

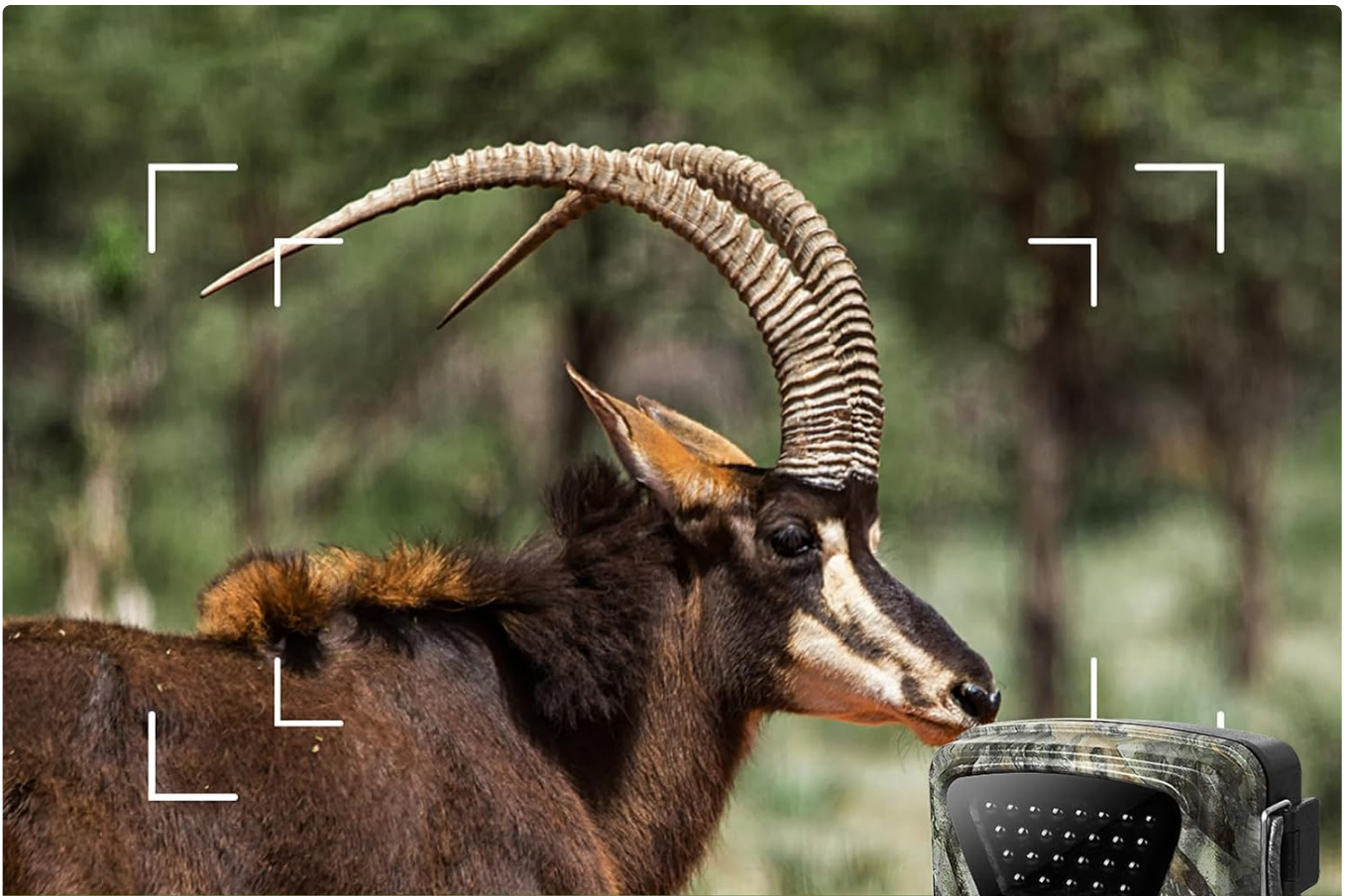
# Packing List



Figure 2: Included accessories and camera

## KEY FEATURES

- **Ultra-clear Photos and Videos:** Captures 28 MP images and 1520P (2.7K) video with vivid detail, thanks to a premium optical lens and advanced image sensor.
- **Amazing 0.2s Trigger Capture:** Detects movement and snaps photos in less than 0.2 seconds, with a trigger distance of up to 65 feet.
- **IP66 Waterproof:** Designed with premium materials to withstand outdoor elements, ensuring full functionality in all seasons.
- **Super Night Vision & Low Glow Infrared LEDs:** Equipped with 26Pcs 850nm low glow infrared LEDs for clear night images and videos in total darkness.
- **Sufficient Storage:** Comes with a 32GB SD card, expandable up to 512GB.



## Outdoor HD surveillance camera



1520P



0.2s trigger  
time



IP66



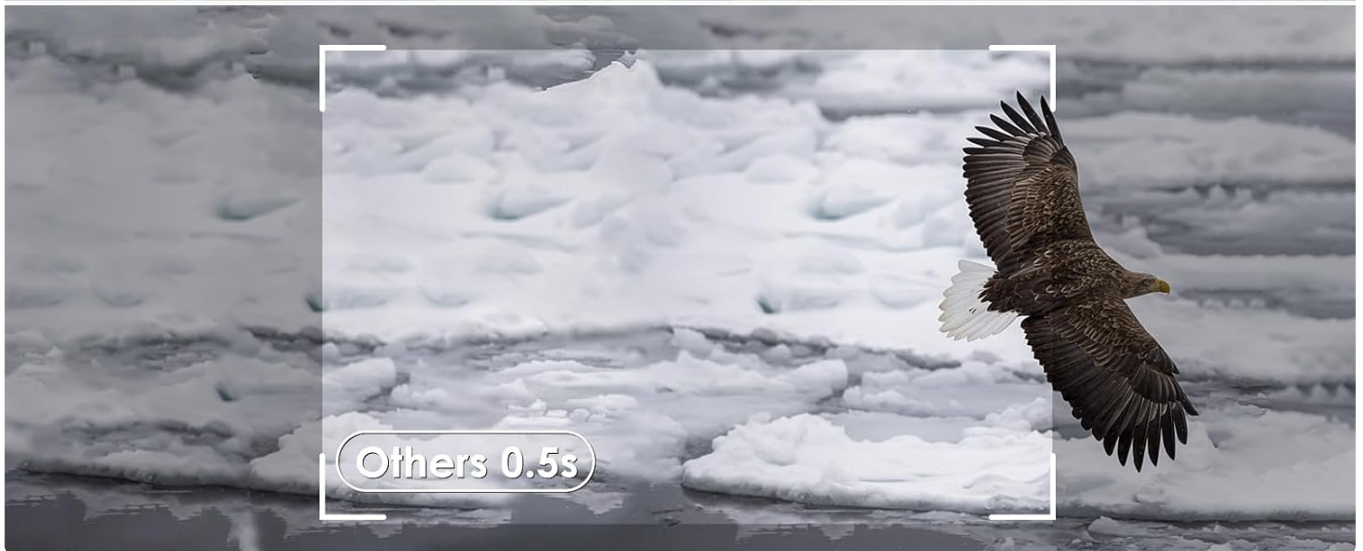
32 GB  
SD card



*Overview of camera features including 1520P video, 0.2s trigger, IP66, and 32GB SD card.*

# 0.2s Trigger Speed Don't Miss any Movement

90° shooting range can reduce false triggering



*Comparison showing the rapid 0.2s trigger speed capturing fast-moving subjects.*

**28MP**

**16MP**



**1520P Resolution & 28MP**

**Ultra HD 2.7K Video**

---

*Illustration of 1520P video and 28MP photo resolution capabilities.*

# 65FT Night Vision

Install **26pcs 850nm** low glow LEDs to show terrific black and white night vision



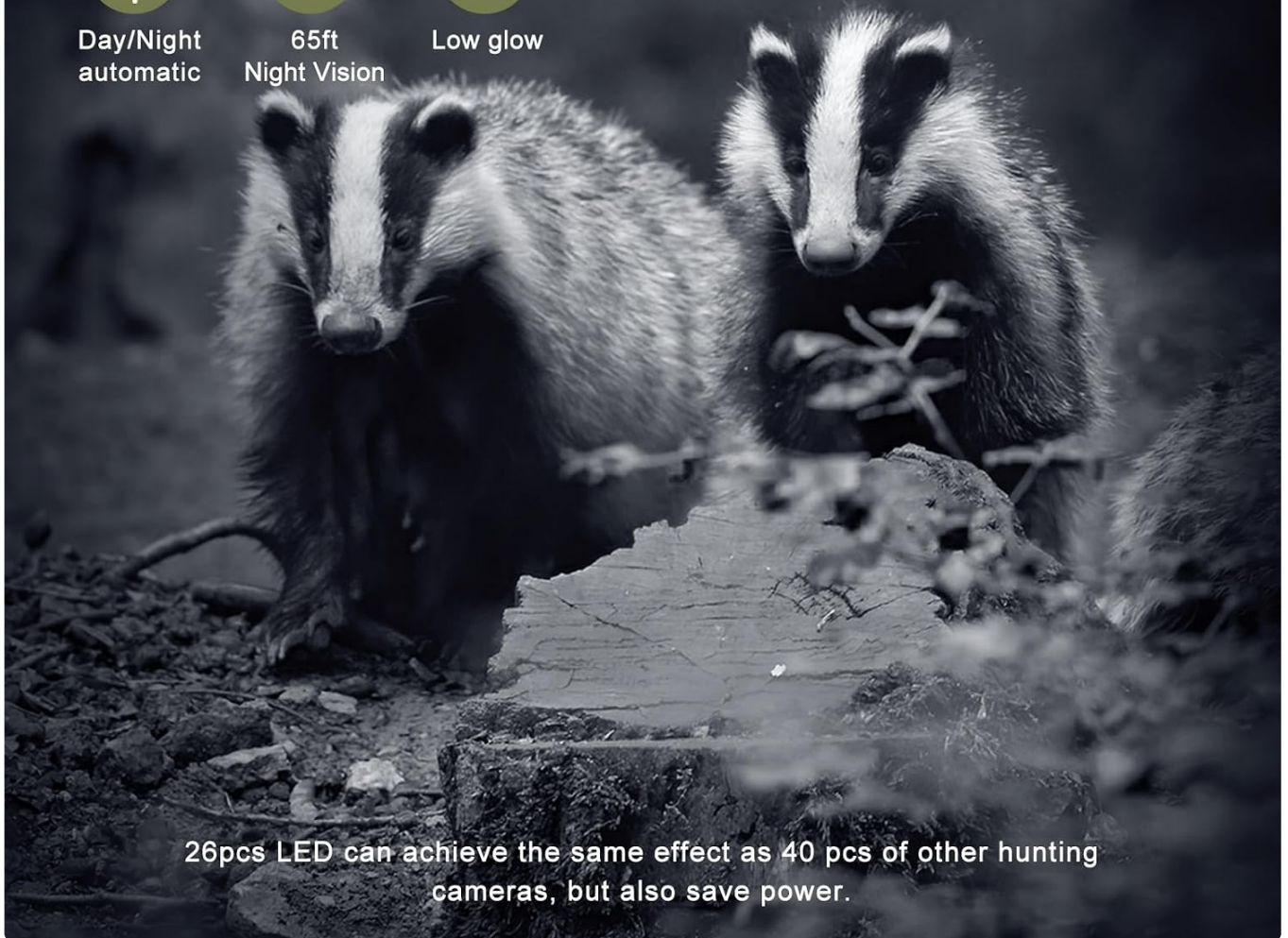
Day/Night automatic



65ft Night Vision



Low glow



26pcs LED can achieve the same effect as 40 pcs of other hunting cameras, but also save power.

*Demonstration of 65ft night vision range with low glow infrared LEDs.*

# IP66 Waterproof

Durable case design makes withstand the rigors of outdoor use and the elements.



Ice & Snow



Rain



Dust & Mud



*Visual representation of the camera's IP66 waterproof rating.*

## SETUP GUIDE

---

Follow these steps to set up your MAXDONE PH820 Trail Camera:

### 1. Battery Installation

1. Open the camera casing by unlatching the side clips.
2. Remove the battery compartment cover.
3. Insert 8x AA alkaline batteries (not included) into the designated slots, ensuring correct polarity.
4. Replace the battery compartment cover and close the camera casing securely.

### 2. SD Card Installation

1. Locate the SD card slot inside the camera, typically near the control panel.
2. Insert the provided 32GB Micro SD card into the slot until it clicks into place. Ensure the card is facing the correct direction.

3. It is recommended to format the SD card through the camera's menu before first use.

### 3. Mounting the Camera

1. Choose a suitable location for your camera, such as a tree or a pole, ensuring a clear view of the area you wish to monitor.
2. Use the provided installation belt to secure the camera firmly around the chosen object. Thread the belt through the camera's back slots and tighten.
3. Alternatively, use the stand mount, support, bolts, and stoppers to mount the camera to a flat surface.
4. Adjust the camera's angle to cover the desired area.



Figure 3: Securing the camera to a tree using the provided strap.

### Setup and Operation Video Guide

Your browser does not support the video tag.

*Video: A detailed guide on how to set up and configure your MAXDONE trail camera, including battery and SD card installation, and menu navigation.*

## OPERATING INSTRUCTIONS

---

### 1. Powering On/Off and Mode Selection

- Open the camera casing to access the control panel.
- Locate the mode switch (USB, OFF, TEST, ON).
- **OFF:** Powers the camera down.
- **TEST:** Allows you to access the menu, view photos/videos, and adjust settings. The blue light will turn on briefly when motion is detected in this mode.
- **ON:** Activates the camera for automatic recording based on motion detection. The blue light will turn off after a few seconds, indicating it's in active recording mode.

### 2. Menu Navigation and Settings

In **TEST** mode, use the control buttons to navigate the menu:

- **MENU:** Enters or exits the menu.
- **Arrow Buttons (Up/Down/Left/Right):** Navigate through options and adjust values.

- **OK:** Confirms selection.
- **SHOT:** Takes a manual photo or starts a manual video recording (in TEST mode).
- **REPLAY:** Enters playback mode to view captured media.

### Common Settings:

- **Mode:** Select Photo, Video, or Photo & Video.
- **Photo Resolution:** Adjust image quality (e.g., 28MP, 20MP, 16MP).
- **Video Resolution:** Set video quality (e.g., 1520P, 1080P).
- **Video Length:** Define the duration of video recordings (e.g., 3-60 seconds, 2-10 minutes).
- **Shot Lag:** Set the delay between consecutive triggers.
- **Sensitivity Motion Sensors:** Adjust the sensitivity of the PIR sensor (Low, Middle, High).
- **Time Lapse:** Enable or disable time-lapse recording.
- **Set Time & Date:** Configure the current time and date for accurate timestamps on media.
- **Password Protection:** Set a password to prevent unauthorized access.
- **Format Memory Card:** Erase all data on the SD card.

### 3. Viewing Captured Media

1. In **TEST** mode, press the **REPLAY** button.
2. Use the arrow buttons to navigate through photos and videos.
3. Press **OK** to view a selected photo or play a video.
4. To exit playback, press **MENU**.



Figure 4: Connecting the camera to a computer to view captured media.

## MAINTENANCE

- Regularly check battery levels and replace them when low to ensure continuous operation.
- Periodically clean the camera lens and PIR sensor window with a soft, dry cloth to prevent smudges or dirt from affecting image quality and motion detection.
- Ensure the camera casing is securely latched to maintain its IP66 waterproof rating.
- Format the SD card regularly to prevent data corruption and ensure optimal performance. Back up important files before formatting.
- Store the camera in a cool, dry place when not in use for extended periods.

## TROUBLESHOOTING

Problem	Possible Cause	Solution
Camera not turning on.	Low or dead batteries; incorrect battery polarity; mode switch in OFF position.	Replace batteries with fresh ones, ensuring correct polarity. Set mode switch to TEST or ON.
No photos/videos captured.	SD card full or corrupted; incorrect mode (e.g., in TEST mode); PIR sensor blocked or sensitivity too low.	Format or replace SD card. Ensure camera is in ON mode. Clear sensor area and increase PIR sensitivity.
Poor image/video quality.	Dirty lens; low light conditions (without night vision); incorrect resolution settings.	Clean the lens. Ensure night vision is active in low light. Adjust photo/video resolution to higher settings.
Short battery life.	Frequent triggers; extreme temperatures; low-quality batteries.	Reduce PIR sensitivity or shot lag. Use high-quality alkaline AA batteries.

## SPECIFICATIONS

Feature	Detail
Model Number	PH820
Effective Still Resolution	28 MP
Video Capture Resolution	1520p
Max Shutter Speed	0.2 seconds
Night Vision Range	65 Feet (850nm low glow IR LEDs)
International Protection Rating	IP66 (Waterproof)
Power Source	Battery Powered (8x AA batteries required)
Storage	32GB SD card included, expandable up to 512GB
Dimensions (L x W x H)	5.3 x 3.54 x 2.05 inches
Item Weight	1.21 pounds
Color	Army Green

## WARRANTY AND SUPPORT

The MAXDONE PH820 Trail Camera comes with a **One-Year Warranty service** from the date of purchase, ensuring peace of mind. We are committed to providing A+ Customer Service to address any questions or concerns you may have. For technical support or warranty claims, please refer to the contact information provided in your product packaging or visit the official MAXDONE website.

