

COLSUR S02

COLSUR Bluetooth Speaker with Night Light - 3 in 1 Wireless Charger

Model: S02

INTRODUCTION

This manual provides comprehensive instructions for the COLSUR S02 Bluetooth Speaker with Night Light and 3-in-1 Wireless Charger. Please read this manual carefully before using the product to ensure proper operation and to maximize its features. Keep this manual for future reference.

WHAT'S IN THE BOX

Upon unpacking, please verify that all the following items are included:

- 1 x COLSUR S02 2-in-1 Magnetic Charging Station (Bluetooth speaker, LED night light, phone and watch charger)
- 1 x USB-C Charging Cable (3.94ft)
- 1 x User Manual



Image: The COLSUR S02 device alongside its retail packaging, illustrating the product's design and included components.

PRODUCT OVERVIEW

The COLSUR S02 is a versatile device combining a Bluetooth speaker, an LED night light, and a 3-in-1 wireless charging station. It features a compact and portable design, making it suitable for various environments.

3 in 1 Bluetooth Speaker



Image: A detailed diagram highlighting the different functional areas of the COLSUR S02, including the LED night light, phone charging area, earphone charging area, and control buttons for light and volume.

Key Features:

- **Magnetic 2-in-1 Wireless Charger:** Designed for iPhone 12/13/14/15/16 Pro Max, AirPods Pro, and Apple Watch Series 9/8/7/6/SE/5/4/3/2/1/SE.
- **Safe & Fast Charging:** Equipped with a 15W fast charger, capable of fully charging an iPhone in 2-3 hours.
- **Compact & Portable:** Foldable design for easy transport and storage.
- **Adjustable Stand:** Allows for customizable viewing angles for your iPhone while charging.
- **Bluetooth Speaker:** Integrated speaker for audio playback.

- **LED Night Light:** Provides ambient lighting.

SETUP

1. **Unpack:** Carefully remove all components from the packaging.
2. **Power Connection:** Connect the provided USB-C charging cable to the port on the COLSUR S02 and plug the other end into a compatible power adapter (not included). Ensure the device is connected to a power source to enable wireless charging functionality.
3. **Placement:** Place the device on a stable, flat surface.

OPERATING INSTRUCTIONS

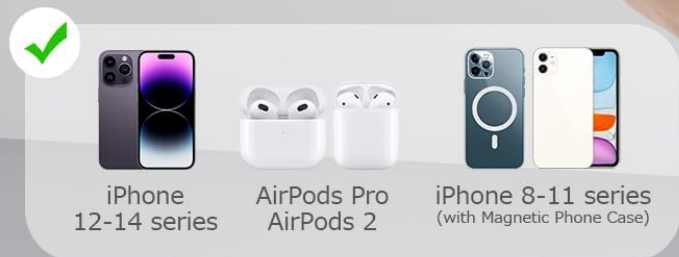
1. Wireless Charging

The COLSUR S02 features a magnetic wireless charging pad for compatible smartphones and a dedicated area for AirPods and Apple Watch.

- **Smartphone Charging:** Place your compatible iPhone (12/13/14/15/16 Series) onto the magnetic charging pad. The device supports charging with cases up to 5mm (0.2") thickness. For secure magnetic attachment, a caseless iPhone or a MagSafe-compatible case is required.
- **AirPods Charging:** Place your AirPods Pro/3/2 (with wireless charging case) onto the designated earphone charging area.
- **Apple Watch Charging:** Place your Apple Watch (Series 9/8/7/6/SE/5/4/3/2/1/SE) onto the designated watch charging area.

N53 Strong Magnet

Hold the phone firmly



Note: The product must be connected to a power source to use the wireless charging function.

Image: An iPhone securely attached to the magnetic charging pad of the COLSUR S02, demonstrating the strong magnetic hold for stable wireless charging.



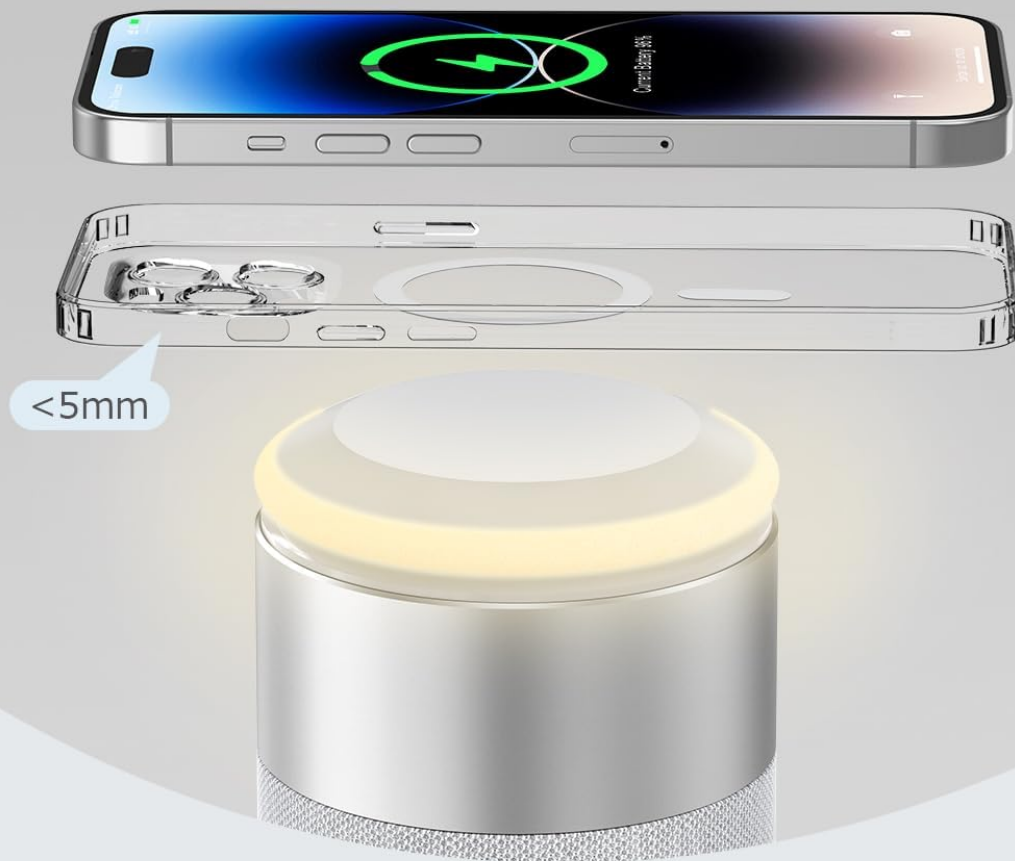
Image: A visual guide indicating compatibility of various iPhone series (16-15, 14-13, 12) with the wireless charging function.



Image: A visual guide indicating compatibility of various AirPods models (Pro 1/2, 4-3, 2 with wireless charging case) with the earphone charging area.

CASE FRIENDLY

Preferably naked or with a magnetic case



Magnetic Case



Phone Holder



Metal Case



Credit Card

Image: An illustration demonstrating the device's compatibility with phone cases, specifically highlighting support for magnetic cases and cases up to 5mm thickness.



Image: A diagram illustrating the strong magnetic hold of the charging pad, capable of supporting up to 2.2 lbs (10N) for secure device placement.

2. Bluetooth Speaker Function

The integrated Bluetooth 5.1 speaker allows for wireless audio playback.

- a. **Pairing:** Power on the COLSUR S02. The speaker will enter pairing mode, indicated by a flashing LED.
- b. **Connect:** On your smartphone or other Bluetooth-enabled device, search for "COLSUR S02" in the Bluetooth settings and select it to pair.
- c. **Audio Playback:** Once paired, audio from your device will play through the COLSUR S02 speaker.
- d. **Controls:** Use the physical buttons on the device to adjust volume, skip tracks, and manage playback.



Image: The COLSUR S02 positioned in a social environment, emphasizing its role as a portable Bluetooth speaker with a long-lasting 1800mAh battery.

3. Night Light Operation

The LED night light provides adjustable illumination.

- **Turn On/Off:** Use the dedicated touch button on the device to activate or deactivate the night light.
- **Adjust Brightness:** Press and hold the night light button to cycle through brightness levels.

Multifunctional Bedside Lamp





-  Wireless charging
-  Touch tamp
-  Night Light
-  Bluetooth Speaker



Image: The COLSUR S02 serving as a bedside lamp, demonstrating its night light feature alongside its wireless charging and Bluetooth speaker capabilities.

4. Adjustable Stand

The charging pad can be adjusted for optimal viewing angles.

- The magnetic charging pad can be rotated 360 degrees and tilted up to 75 degrees, allowing for both horizontal and vertical phone placement.
- Adjust the angle to comfortably view videos, access information, or use night mode while your device charges.

360° Adjustable

Charging horizontally or vertically



Image: An illustration detailing the 360-degree rotational and 75-degree tilting capabilities of the charging stand, allowing for flexible phone positioning.

MAINTENANCE

- **Cleaning:** Use a soft, dry cloth to clean the surface of the device. Avoid using abrasive cleaners or solvents.
- **Storage:** When not in use for extended periods, store the device in a cool, dry place away from direct sunlight and extreme temperatures.
- **Handling:** Handle the device with care to prevent damage from drops or impacts.

TROUBLESHOOTING

| Problem | Possible Cause | Solution |
|--------------------------------|----------------------------------------------------------------------------------|----------------------------------------------------------------------------------------------------------------------------------------------------------------------------------------------------------------------------------------------------------------------------------------------------------------------------------------------------------|
| Device not powering on. | Not connected to power or power adapter issue. | Ensure the USB-C cable is securely connected to both the device and a working power adapter. Try a different power adapter or outlet. |
| Wireless charging not working. | Device not properly aligned, incompatible phone case, or not connected to power. | <ul style="list-style-type: none">◦ Ensure the device is powered on.◦ Reposition your phone on the magnetic charging pad to ensure proper alignment.◦ Remove any non-magnetic or overly thick phone cases (over 5mm).◦ Confirm your phone supports wireless charging. |
| Bluetooth speaker not pairing. | Speaker not in pairing mode, or device already paired. | <ul style="list-style-type: none">◦ Ensure the speaker is powered on and in pairing mode (flashing LED).◦ Disable and re-enable Bluetooth on your source device.◦ Forget the device from your source device's Bluetooth list and attempt to pair again.◦ Ensure the speaker is not connected to another device. |
| Night light not functioning. | Device not powered on or light function disabled. | Ensure the device is powered on. Press the night light touch button to activate it. |

SPECIFICATIONS

| Feature | Detail |
|--------------------|----------------------------------------------------------------------------------------------------------|
| Model Number | S02 |
| Product Dimensions | 9 x 3.5 x 3.5 inches |
| Item Weight | 1.98 pounds |
| Brand | COLSUR |
| Connector Type | USB Type C |
| Compatible Devices | Cellular Phones (iPhone 15/14/13/12 Series), AirPods Pro/3/2, Apple Watch Series 9/8/7/6/SE/5/4/3/2/1/SE |
| Special Feature | USB Port, Wireless Charging, Bluetooth Speaker, LED Night Light |
| Input Voltage | 120 Volts |
| Amperage | 3 Amps |
| Total USB Ports | 1 (for power input) |

| Feature | Detail |
|--------------------------|--------------------------------------------------------|
| Wireless Charging Output | 15W (Fast Charging) |
| Bluetooth Version | 5.1 |
| Battery Capacity | 1800mAh (for speaker functionality, if not plugged in) |




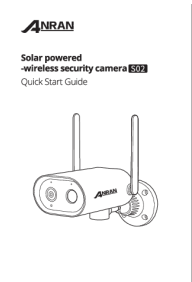
WARRANTY AND SUPPORT

The COLSUR S02 comes with a worry-free 12-Month Warranty. If you encounter any issues with your product, please contact our dedicated support team. Our team is available 24/7 to provide prompt solutions and ensure your satisfaction.

For support, please refer to the contact information provided on the product packaging or the official COLSUR website.

Your safety and satisfaction are our utmost priorities.

Related Documents - S02

| | |
|-------------------------------------------------------------------------------------|--------------------------------------------------------------------------------------------------------------------------------------------------------------------------------------------------------------------------------------------------------------------------------------------------------------------------------------|
|  | COLSUR S28 Wireless Charging Station User Manual This document provides instructions for setting up and using the COLSUR S28 3-in-1 Wireless Charging Station, which includes an alarm clock and night light. It is compatible with various iPhone, Samsung, and AirPods models. |
|  | COLSUR S29 Bluetooth Speaker Alarm Clock User Guide This user guide provides comprehensive instructions for the COLSUR S29 Bluetooth Speaker Alarm Clock, covering setup for time, alarm, snooze, volume control, and 12/24 hour display, alongside date and year settings. |
|  | COLSUR S05 Sunrise Alarm Clock/Charger/Speaker User Manual Comprehensive instructions for the COLSUR S05 Sunrise Alarm Clock, featuring a Bluetooth speaker, wireless charger, and night light. Learn how to set alarms, adjust brightness, use Bluetooth, and understand product specifications and precautions. |
|  | ANRAN S02 Solar Powered Wireless Security Camera Quick Start Guide A quick start guide for the ANRAN S02 solar-powered wireless security camera, covering unboxing, product overview, app installation, mounting, Wi-Fi setup, and troubleshooting. |