

JLab Go Air Pop+

JLab Go Air Pop+ True Wireless Earbuds User Manual

INTRODUCTION

Welcome to the JLab Go Air Pop+ True Wireless Earbuds user manual. These earbuds are designed for seamless audio experience with advanced features and a compact design. This manual provides essential information for setup, operation, maintenance, and troubleshooting to ensure optimal performance.



Figure 1: JLab Go Air Pop+ True Wireless Earbuds in their charging case.

WHAT'S INCLUDED

- 1 Pair of Go Pop+ Earbuds
- Charging Case with integrated USB-C Cable
- 3 Sets of Gel Eartips (Small, Medium, Large)

INCLUDES



- 1 Pair of Go Pop+ Earbuds
- Charging Case with integrated USB-C Cable
- 3 Sets Gel Eartips



Figure 2: Package contents of the JLab Go Air Pop+ Earbuds.

SETUP

1. Charging the Case and Earbuds

The charging case features an integrated USB-C cable for convenient charging. Simply plug the USB-C connector into a compatible USB-A port. The earbuds charge automatically when placed inside the case.

2. Initial Pairing

1. Remove both earbuds from the charging case. They will automatically power on and connect to each other.
2. Open your device's Bluetooth settings.
3. Select "JLab Go Air Pop+" from the list of available devices to complete the pairing process.

3. Optimizing Fit

For optimal sound quality and comfort, select the eartip size that best fits your ears. The earbuds come with three different gel eartip sizes (Small, Medium, Large). Experiment to find the most secure and comfortable fit.

LONG BATTERY LIFE

Enjoy up to 26+ hours of playtime with the charging case



Figure 3: Proper fit of the JLab Go Air Pop+ Earbuds.

OPERATING INSTRUCTIONS

1. Touch Controls

The JLab Go Air Pop+ earbuds feature intuitive touch controls. You can customize these functions using the JLab App.

2. Custom Sound (EQ3 Sound)

Personalize your listening experience by downloading the JLab App. The app allows you to control touch functions, adjust Be Aware settings, and select from EQ presets including JLab Signature, Balanced, or Bass Boost.

CUSTOMIZE YOUR SOUND

Download the JLab app to tailor your listening experience further. Control touch functions, adjust Be Aware settings, and personalize sound preferences with EQ presets including JLab Signature, Balanced, or Bass Boost.

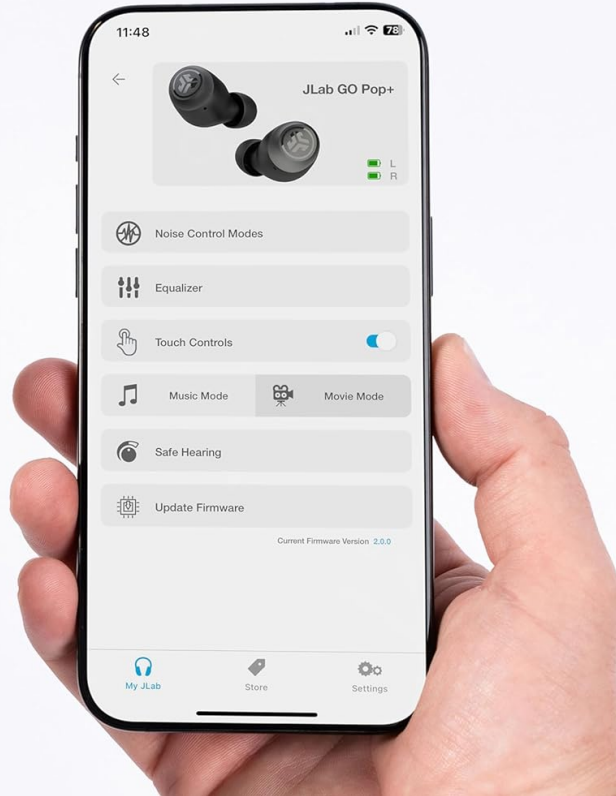


Figure 4: JLab App interface for sound customization.

3. Be Aware Mode

Stay aware of your surroundings by activating Be Aware Mode. This feature allows ambient noise to pass through, ensuring safe listening in environments where situational awareness is important.

DUAL CONNECT + CLEAR CALLS



Choose between using either earbud independently or together, while ensuring clear calls.

Figure 5: Demonstrating Be Aware Mode for situational awareness.

4. Dual Connect

The Dual Connect feature allows you to use either earbud independently or both together. This is useful for calls or when you need to keep one ear free.



Choose between using either earbud independently or together, while ensuring clear calls.

Figure 6: Dual Connect functionality for flexible use.

MAINTENANCE

1. Cleaning

Regularly clean your earbuds and charging case to maintain optimal performance. Use a soft, dry cloth to wipe down the surfaces. For the eartips, remove them and clean with a damp cloth, ensuring they are completely dry before reattaching.

2. Storage

Always store the earbuds in their charging case when not in use to protect them and ensure they remain charged. Avoid exposing the earbuds to extreme temperatures or direct sunlight for extended periods.

3. Water Resistance

The JLab Go Air Pop+ earbuds are water resistant. This means they can withstand sweat and light splashes, making them suitable for sports and fitness activities. However, they are not designed for submersion in water.

TROUBLESHOOTING

- **Earbuds not pairing:** Ensure both earbuds are fully charged. Place them back in the case, close the lid, then open it again and remove them. Re-attempt pairing via your device's Bluetooth settings.
- **Only one earbud working:** Try resetting the earbuds by placing them in the case, forgetting the device in your phone's Bluetooth settings, and then re-pairing.
- **Low volume or poor sound quality:** Check the eartip fit and try different sizes. Ensure the earbuds are clean and free of debris. Adjust EQ settings via the JLab App.
- **Charging issues:** Verify the integrated USB-C cable is securely connected to a power source. Check for any debris in the charging port of the case.

SPECIFICATIONS

Feature	Detail
Model Name	Go Air Pop+
Brand	JLab
Connectivity Technology	Bluetooth, Wireless
Bluetooth Version	5.3
Battery Life	9+ hours per earbud, 26+ extra hours from charging case (35+ hours total)
Control Type	Touch, Volume Control
Special Features	Microphone Included, Noise Isolation, Sweatproof, Volume Control, Be Aware Mode
Water Resistance Level	Water Resistant
Item Weight	0.011 ounces
UPC	810119071866

OFFICIAL PRODUCT VIDEO

Watch this video for a comprehensive overview and review of the JLab Go Air Pop+ Earbuds, demonstrating key features and usage.

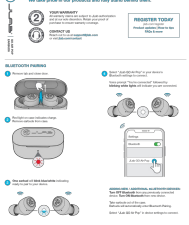
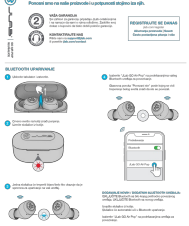
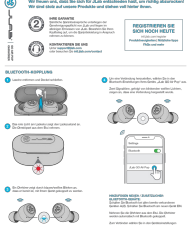
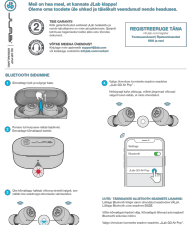
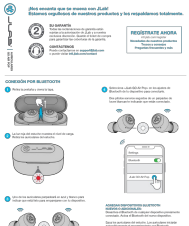
Your browser does not support the video tag.

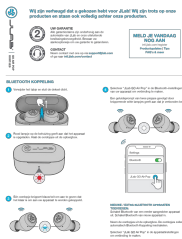
Video: JLAB Ear Buds Overview and Review (Duration: 4:11)

WARRANTY AND SUPPORT

For warranty information and customer support, please visit the official JLab website or contact their customer service. Details regarding product registration, warranty claims, and technical assistance can be found there.

Related Documents - Go Air Pop+

	<p>JLab GO Air POP True Wireless Earbuds: User Guide and Features</p> <p>Comprehensive guide to JLab GO Air POP true wireless stereo Bluetooth earbuds, covering Bluetooth pairing, button functions, EQ modes, charging, fitting, and troubleshooting.</p>
	<p>JLab GO Air Pop True Wireless Earbuds - User Manual and Setup Guide</p> <p>Comprehensive guide to setting up, pairing, and using your JLab GO Air Pop true wireless earbuds. Covers button functions, EQ modes, charging, troubleshooting, and care instructions.</p>
	<p>JLab GO Air Pop True Wireless Earbuds User Manual and Guide</p> <p>Comprehensive guide to the JLab GO Air Pop true wireless earbuds, covering Bluetooth pairing, button functions, EQ modes, charging, fitting, troubleshooting, and care.</p>
	<p>JLab GO Air Pop True Wireless Earbuds: User Guide and Setup</p> <p>Comprehensive guide to setting up, using, and troubleshooting your JLab GO Air Pop true wireless earbuds. Learn about Bluetooth pairing, button functions, EQ modes, charging, and more.</p>
	<p>JLab GO Air POP True Wireless Earbuds User Manual & Guide</p> <p>Get the most out of your JLab GO Air POP true wireless earbuds with this comprehensive user manual. Learn about Bluetooth pairing, button controls, EQ modes, charging, fit, troubleshooting, and important precautions.</p>



[JLab GO Air Pop True Wireless Earbuds User Manual and Guide](#)

Comprehensive guide to the JLab GO Air Pop True Wireless Earbuds, covering Bluetooth pairing, button functions, EQ settings, charging, fit, troubleshooting, and important safety information.