



Manuals.plus /

› STF /

› STF Soar Over-Ear Headphones Instruction Manual

## STF SOAR

# STF Soar Over-Ear Headphones Instruction Manual

Model: SOAR

## INTRODUCTION

---

Thank you for choosing the STF Soar Over-Ear Headphones. These headphones are designed to provide a high-quality audio experience with the convenience of wireless connectivity and the benefit of Active Noise Cancellation (ANC). This manual will guide you through the features and functions of your new headphones, ensuring optimal use and longevity.



Image: STF Soar Over-Ear Headphones, gray model.

## PACKAGE CONTENTS

---

Please check the package for the following items:

- STF Soar Over-Ear Headphones
- Audio Cable (3.5mm Jack)
- Charging Cable (USB)
- Instruction Manual (this document)



Image: Retail packaging for STF Soar Over-Ear Headphones, showing the product and key features.

## PRODUCT OVERVIEW

---

Familiarize yourself with the various parts and controls of your STF Soar headphones.

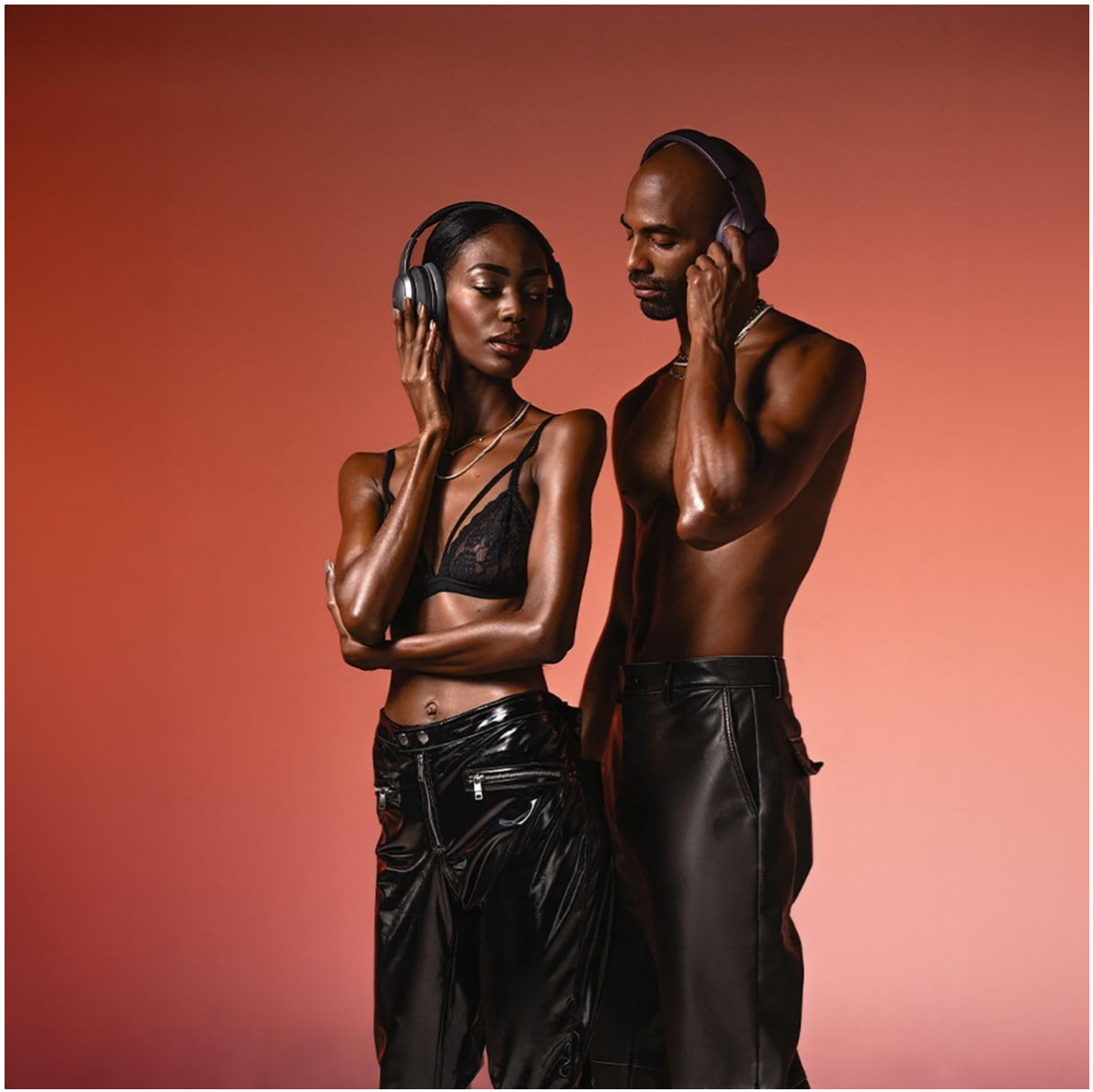


Image: Side view of the STF Soar headphones, highlighting the control buttons on the earcup.

### Key Features:

- **Wireless Audio:** Connect via Bluetooth for untethered listening.
- **Active Noise Cancellation (ANC):** Reduce ambient noise for immersive sound.
- **Long Battery Life:** Up to 30 hours of playback on a single charge.
- **Dual Functionality:** Use wirelessly or with the included 3.5mm audio cable.
- **Integrated Microphone:** For hands-free calls.



El circuito de cancelación de ruido invierte la onda de sonido y la envía de vuelta a la bocina de los audífonos.

Image: Diagram showcasing key features of the STF Soar headphones, including 30-hour battery life, wireless audio, Active Noise Cancellation, and dual wired/wireless functionality.

## SETUP

### 1. Charging the Headphones

Before first use, fully charge your headphones. Connect the provided USB charging cable to the charging port on the headphones and to a USB power source (e.g., computer, wall adapter). The charging indicator light will show the charging status. A full charge takes approximately **2 hours** and provides up to **30 hours** of playback time.

### 2. Powering On/Off

- **To Power On:** Press and hold the Power button for approximately 3 seconds until the indicator light turns on.
- **To Power Off:** Press and hold the Power button for approximately 3 seconds until the indicator light turns off.

### 3. Bluetooth Pairing

1. Ensure the headphones are powered off.
2. Press and hold the Power button for 5-7 seconds until the indicator light flashes blue and red, indicating pairing mode.
3. On your device (smartphone, tablet, computer), enable Bluetooth and search for available devices.
4. Select "STF Soar" from the list of found devices.
5. Once paired, the indicator light on the headphones will turn solid blue or flash blue slowly.
6. If prompted for a password, enter "0000".

The headphones will automatically attempt to reconnect to the last paired device when powered on.

## 4. Wired Connection (3.5mm Audio Jack)

You can use the STF Soar headphones with the included 3.5mm audio cable. This is useful when the battery is depleted or for devices without Bluetooth connectivity.

1. Connect one end of the 3.5mm audio cable to the audio input port on the headphones.
2. Connect the other end to the 3.5mm audio output jack of your device.
3. In wired mode, the headphone's battery is not consumed, and some controls on the headphones may be inactive.

## OPERATING INSTRUCTIONS

---

### Music Playback

- **Play/Pause:** Press the Multi-function button (usually the Power button when not in pairing mode) once.
- **Next Track:** Press and hold the Volume Up button.
- **Previous Track:** Press and hold the Volume Down button.
- **Volume Up:** Short press the Volume Up button.
- **Volume Down:** Short press the Volume Down button.

### Call Management

- **Answer/End Call:** Press the Multi-function button once.
- **Reject Call:** Press and hold the Multi-function button for 2 seconds.
- **Redial Last Number:** Double-press the Multi-function button.

### Active Noise Cancellation (ANC)

The STF Soar headphones feature Active Noise Cancellation to reduce ambient sounds, allowing for a more focused listening experience.

1. **To Activate ANC:** Locate the ANC button (refer to the product overview image for button location). Press the ANC button once. An indicator light (often green) will illuminate to confirm ANC is active.
2. **To Deactivate ANC:** Press the ANC button again. The indicator light will turn off.

ANC works by using microphones to detect external noise and then generating an anti-noise signal to cancel it out. This is particularly effective for low-frequency sounds like engine hum or air conditioning.

# SOAR

El micrófono captura el sonido ambiental y lo envía al circuito de cancelación activa de ruido.

Sonido ambiental entrante (avión, motores de vehículos, etc).



Image: Diagram illustrating how Active Noise Cancellation functions by capturing ambient sound and generating an inverse wave to cancel it.

## MAINTENANCE

---

- **Cleaning:** Use a soft, dry cloth to clean the headphones. Do not use abrasive cleaners or solvents.
- **Storage:** Store the headphones in a cool, dry place away from direct sunlight and extreme temperatures.
- **Battery Care:** To preserve battery life, charge the headphones regularly, even if not used frequently. Avoid fully discharging the battery for extended periods.
- **Water Resistance:** These headphones are **not water-resistant**. Avoid exposure to liquids and moisture.

## TROUBLESHOOTING

---

Problem	Solution
Headphones do not power on.	Ensure the headphones are charged. Connect to a power source using the USB cable.
Cannot pair via Bluetooth.	<ul style="list-style-type: none"> <li>• Ensure headphones are in pairing mode (flashing blue/red light).</li> <li>• Make sure Bluetooth is enabled on your device.</li> <li>• Move headphones closer to your device.</li> <li>• Forget "STF Soar" from your device's Bluetooth list and try pairing again.</li> </ul>
No sound or low volume.	<ul style="list-style-type: none"> <li>• Check volume levels on both headphones and your connected device.</li> <li>• Ensure headphones are properly paired or the 3.5mm cable is fully inserted.</li> <li>• Try playing audio from a different source.</li> </ul>
ANC is not effective.	<ul style="list-style-type: none"> <li>• Ensure ANC is activated (green indicator light).</li> <li>• ANC is most effective for low-frequency, continuous sounds. It may not completely cancel out voices or sudden, sharp noises.</li> </ul>

## SPECIFICATIONS

Feature	Detail
Model Name	SOAR
Connectivity Technology	Wireless (Bluetooth), Wired (3.5mm Jack)
Wireless Communication Technology	Bluetooth
Headphone Connector	3.5 mm Jack
Control Type	Remote Control on Cable, Remote Control on Headphone
Noise Control	Active Noise Cancellation
Ear Placement	Over-Ear (Supraaurales)
Battery Life (Average)	Up to 30 Hours
Charging Time	Approximately 2 Hours
Water Resistance Level	Not Water Resistant
Compatible Devices	Mobile phones, Tablets, Laptops, Desktop computers, Music players, Game consoles, Smart speakers, Devices with 3.5 mm input
Dimensions	26.9 x 23.8 x 12.8 cm; 430 g

## SAFETY INFORMATION

- Do not disassemble or modify the headphones.
- Avoid exposing the headphones to extreme temperatures, humidity, or direct sunlight.
- Do not use the headphones while driving or in situations where you need to be aware of your surroundings.
- Listen at moderate volume levels to prevent hearing damage.
- Keep out of reach of children.

## WARRANTY AND SUPPORT

For warranty information or technical support, please refer to the warranty card included with your product or visit

the official STF website. Keep your proof of purchase for warranty claims.

**Manufacturer:** Stuffactory