



[Manuals.plus](#) /

> [AGT INDUSTRIAL](#) /

> 12-inch Mini Excavator Bucket Instruction Manual

AGT INDUSTRIAL DM-12C

Instruction Manual: 12" Mini Excavator Bucket

Brand: AGT INDUSTRIAL | Model: DM-12C

1. PRODUCT OVERVIEW

This manual provides essential information for the safe and effective use of the AGT INDUSTRIAL 12-inch Bucket with Teeth (Model DM-12C). This heavy-duty steel construction bucket is designed for 1-ton mini excavators, including AGT H12, QH12, L12, H15, and KAT12 models. It is engineered for efficient digging, loading, and dumping of various materials such as clay, sand, soil, and gravel.

Key features include wear-resistant material for durability, ease of installation and operation, and a robust design for reliable performance in demanding excavation tasks.

2. SAFETY INFORMATION

WARNING: Always prioritize safety. Failure to follow these instructions may result in serious injury or property damage.

- Read and understand the entire instruction manual before installation or operation.
- Always refer to your mini excavator's operator manual for specific safety procedures and attachment guidelines.
- Wear appropriate Personal Protective Equipment (PPE), including hard hat, safety glasses, gloves, and steel-toed boots, when handling or operating the bucket.
- Ensure the bucket is securely attached to the excavator's quick coupler or pin-on system before operation. Verify all pins are properly seated and secured with retaining clips.
- Keep all bystanders clear of the work area during operation.
- Inspect the bucket for damage, cracks, or excessive wear before each use. Do not operate with damaged equipment.
- Never exceed the lifting capacity of your excavator or the bucket.
- Exercise caution when working on slopes or uneven terrain.

3. COMPONENTS AND VISUAL REFERENCE

The 12-inch mini excavator bucket consists of a main bucket body, three robust digging teeth, and a mounting bracket designed for compatibility with various mini excavator models. The teeth are bolted for secure attachment and easy replacement.



Figure 3.1: Side view of the bucket, highlighting the robust steel construction and tooth design.



Figure 3.2: Front view displaying the three durable digging teeth and their attachment points.



Figure 3.3: Angled front view, providing a comprehensive look at the bucket's profile.

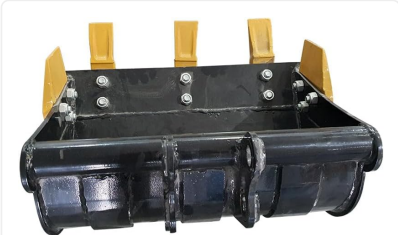


Figure 3.4: Top-down view, illustrating the bucket's capacity and internal structure.



Figure 3.5: Rear view, detailing the robust mounting points for excavator attachment.

4. SETUP AND INSTALLATION

This bucket is designed for quick and secure attachment to compatible 1-ton mini excavators. Always ensure the excavator is on stable, level ground and the engine is off before beginning installation.

1. **Position the Excavator:** Park the mini excavator on a firm, level surface. Lower the boom and arm to a comfortable working height. Turn off the engine and engage the parking brake.
2. **Prepare the Quick Coupler/Pin-on System:** If your excavator uses a quick coupler, ensure it is in the open position. For pin-on systems, align the bucket's mounting ears with the excavator's arm and linkage.
3. **Align the Bucket:** Carefully maneuver the excavator's arm to align the bucket's mounting pins (or quick coupler points) with the corresponding points on the excavator. You may need to slightly adjust the arm's angle.
4. **Insert Pins/Engage Coupler:**
 - For pin-on systems: Insert the appropriate pins through the bucket's mounting ears and the excavator's arm/linkage.
 - For quick couplers: Engage the quick coupler mechanism according to your excavator's manual.
5. **Secure Pins:** For pin-on systems, secure all pins with their retaining clips or bolts to prevent accidental dislodgement during operation. Double-check that all connections are tight and secure.
6. **Test Attachment:** Start the excavator and slowly raise and lower the arm, and curl the bucket to ensure it is securely attached and operates smoothly. Listen for any unusual noises or movements.

Compatibility: This bucket is specifically designed for AGT H12, QH12, L12, H15, and KAT12 1-ton mini excavators. Ensure your excavator model is compatible before attempting installation.

5. OPERATING INSTRUCTIONS

Once the bucket is securely installed, it is ready for operation. Always operate the excavator according to its manufacturer's guidelines and safety procedures.

- **Pre-Operation Check:** Before starting work, perform a visual inspection of the bucket for any signs of wear, damage, or loose components. Ensure the teeth are securely bolted.
- **Digging:** Position the excavator to allow for efficient digging. Lower the bucket and use the excavator's controls to curl the bucket and penetrate the material. The teeth are designed to break up compacted soil and facilitate digging.
- **Loading:** Once the bucket is full, curl it back to prevent spillage. Lift the boom and swing the arm to position the bucket over the desired loading area (e.g., a dump truck or pile).
- **Dumping:** Extend the arm and uncurl the bucket to release the material. Ensure the material is dumped safely.

and away from personnel or obstacles.

- **Material Handling:** This bucket is suitable for general clay, sand, soil, gravel, and dirt. Avoid attempting to dig or lift materials beyond the bucket's or excavator's rated capacity.
- **Smooth Operation:** Operate the controls smoothly to avoid sudden jerks or impacts, which can stress the bucket and excavator components.

6. MAINTENANCE

Regular maintenance will extend the life of your AGT INDUSTRIAL bucket and ensure its continued performance.

- **Daily Inspection:** Before each use, inspect the bucket for:
 - Cracks or deformation in the steel structure.
 - Wear on the cutting edge and teeth.
 - Loose or missing bolts on the teeth.
 - Wear or damage to the mounting pins and pin bores.
- **Cleaning:** After each use, clean the bucket to remove dirt, mud, and debris. This prevents material buildup and allows for easier inspection.
- **Tooth Replacement:** The digging teeth are wear items. Replace them when they show significant wear to maintain digging efficiency. Ensure replacement teeth are genuine AGT INDUSTRIAL parts or equivalent.
- **Lubrication:** If your bucket's mounting points have grease zerks, lubricate them regularly according to your excavator's maintenance schedule to reduce wear on pins and bushings.
- **Storage:** When not in use, store the bucket in a dry, protected area to prevent rust and corrosion.
- **Repairs:** Any significant damage or structural issues should be repaired by a qualified technician. Do not attempt to weld or modify the bucket without expert consultation.

7. TROUBLESHOOTING

Problem	Possible Cause	Solution
Bucket difficult to attach/detach.	Misalignment of pins/coupler, debris in mounting points, bent pins.	Ensure proper alignment. Clean mounting points. Inspect pins for damage and replace if necessary.
Excessive wear on teeth.	Normal wear and tear, aggressive digging in abrasive material, incorrect digging angle.	Replace worn teeth. Adjust digging technique.
Unusual noise during operation.	Loose bolts on teeth, worn pins/bushings, structural damage.	Tighten all bolts. Inspect pins and bushings for wear and replace if needed. Cease operation and inspect for structural damage.
Reduced digging efficiency.	Worn teeth, incorrect operating technique.	Replace worn teeth. Review operating instructions and adjust technique.

If you encounter problems not listed here or require further assistance, please contact AGT INDUSTRIAL customer support.

8. SPECIFICATIONS

Attribute	Detail
Brand	AGT INDUSTRIAL
Model	DM-12C
Bucket Width	12 inches
Material	Alloy Steel
Capacity (Excavator)	Designed for 1 Ton Mini Excavators
Compatible Models	AGT H12, QH12, L12, H15, KAT12
UPC	742803727721
ASIN	B0CXF3GFWX
Country of Origin	China

9. WARRANTY AND SUPPORT

For warranty information, technical support, or to order replacement parts, please contact AGT INDUSTRIAL customer service. Refer to your purchase documentation for specific warranty terms and conditions.

AGT INDUSTRIAL Customer Support:

- Visit the official AGT INDUSTRIAL website for contact details.
- Refer to the contact information provided with your product packaging.

When contacting support, please have your product model (DM-12C) and ASIN (B0CXF3GFWX) readily available.