

GoveeLife B5109

GoveeLife Smart Pool Thermometer with Smart Gateway (Model B5109) Instruction Manual

1. INTRODUCTION

The GoveeLife Smart Pool Thermometer with Smart Gateway (Model B5109) provides accurate, real-time water temperature monitoring for various aquatic environments. This system includes two IPX7 waterproof pool thermometers and a Wi-Fi gateway, allowing for remote monitoring and notification alerts via the Govee Home App. It is suitable for use in swimming pools, ice baths, hot tubs, fishbowls, and ponds.

This manual will guide you through the setup, operation, and maintenance of your GoveeLife Smart Pool Thermometer system to ensure optimal performance and a healthy environment for your aquatic spaces.

2. PACKAGE CONTENTS

- Pool Thermometer × 2
- WiFi Gateway × 1
- Loop Rubber × 2
- Fixed Rope × 2
- AAA Batteries × 4 (pre-installed or included)
- User Manual × 1

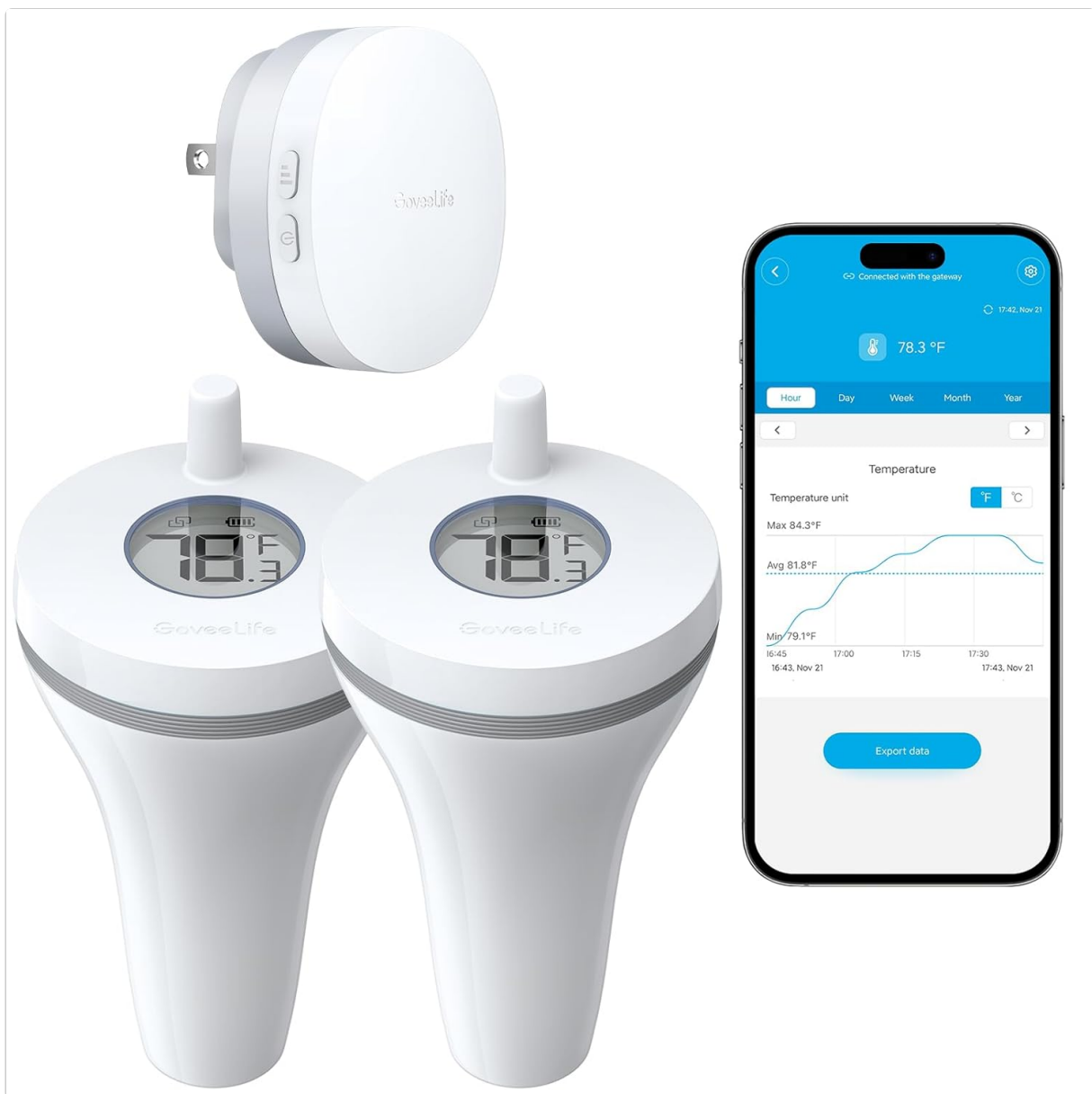


Figure 2.1: GoveeLife Smart Pool Thermometer System Components.

3. PRODUCT OVERVIEW

The GoveeLife Smart Pool Thermometer system consists of two floating thermometer sensors and a central Wi-Fi gateway. The sensors are designed for immersion in water, providing accurate temperature readings. The gateway connects to your home Wi-Fi network, enabling remote access to temperature data and alerts through the Govee Home mobile application. Each thermometer features a digital display for local readings and a button to switch between Fahrenheit (°F) and Celsius (°C).

Fast and Accurate



Figure 3.1: Internal components and accuracy features of the thermometer.

4. SETUP

4.1 App Installation

1. Download the Govee Home App from the App Store (iOS devices) or Google Play (Android devices).
2. Open the app and create an account or log in if you already have one.
3. Accept the User Agreement and Privacy Policy to proceed.

4.2 Gateway Pairing

1. Plug the Wi-Fi Gateway into a power outlet.
2. In the Govee Home App, tap the "+" icon in the top right corner to add a new device.
3. Select the Wi-Fi Smart Gateway (Model H5042) from the list of devices.
4. Follow the in-app instructions to connect the gateway to your 2.4GHz Wi-Fi network. Ensure there are no significant obstacles between the gateway and the sensors for optimal signal stability.

4.3 Sensor Pairing

1. Once the gateway is connected, tap "Add a new sub-device" or the "+" icon within the gateway's device page in the app.
2. Long press the internal button on each pool thermometer sensor for 3 seconds to initiate pairing.
3. The app will automatically detect and connect to the nearby sensors. Assign a name to each sensor for easy identification.

4.4 Battery Installation

Each pool thermometer sensor is powered by 2 AAA batteries. These are typically included and may be pre-installed. If not, open the battery compartment and insert the batteries, ensuring correct polarity. The app will notify you when battery levels are low.

Connecting to Wi-Fi Gateway & Sensor

*Only Support 2.4G Wi-Fi

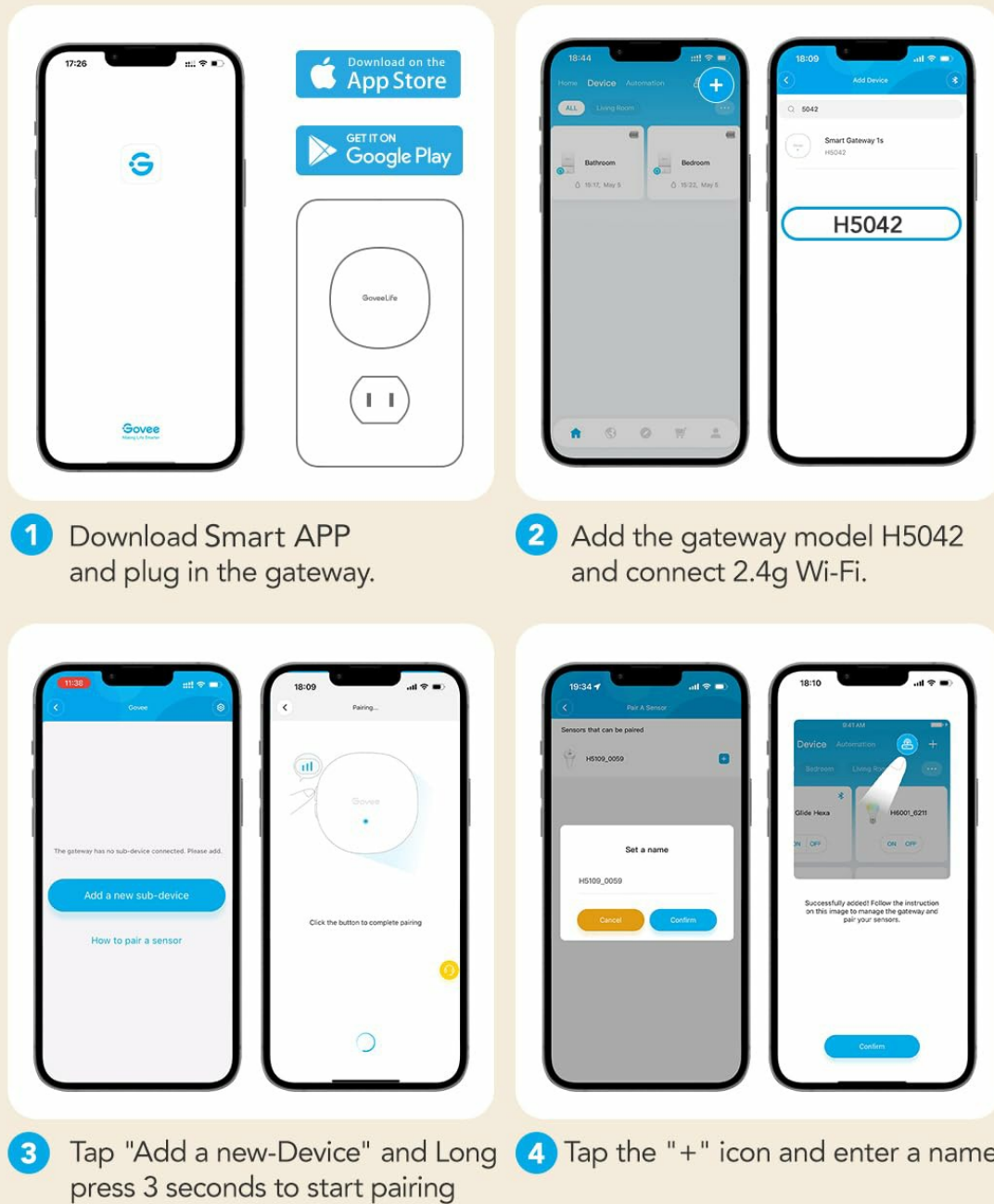


Figure 4.1: Govee Home App setup process for the Smart Pool Thermometer.

5. OPERATION

5.1 Temperature Monitoring

- Once connected, open the Govee Home App to view real-time temperature readings from your pool thermometers.
- The sensors detect temperatures ranging from -4°F to 158°F (-20°C to 70°C) with an accuracy of $\pm 0.5^{\circ}\text{C}$.
- To switch between Fahrenheit (°F) and Celsius (°C) on the thermometer's display, double-click the

internal button on the sensor.

5.2 Data Logging and Export

- The Govee Home App supports online viewing of 20-day data graphs for temperature and humidity.
- You can export data recorded over the past 2 years for analysis.

5.3 Alerts and Notifications

Set custom temperature ranges within the Govee Home App. You will receive instant notifications on your smartphone if the water temperature falls outside your preset range, ensuring you are always informed.



Figure 5.1: App notification for temperature alerts.

5.4 Voice Control

The GoveeLife Smart Pool Thermometer can be integrated with voice assistants like Amazon Alexa and Google Assistant for convenient hands-free temperature checks.

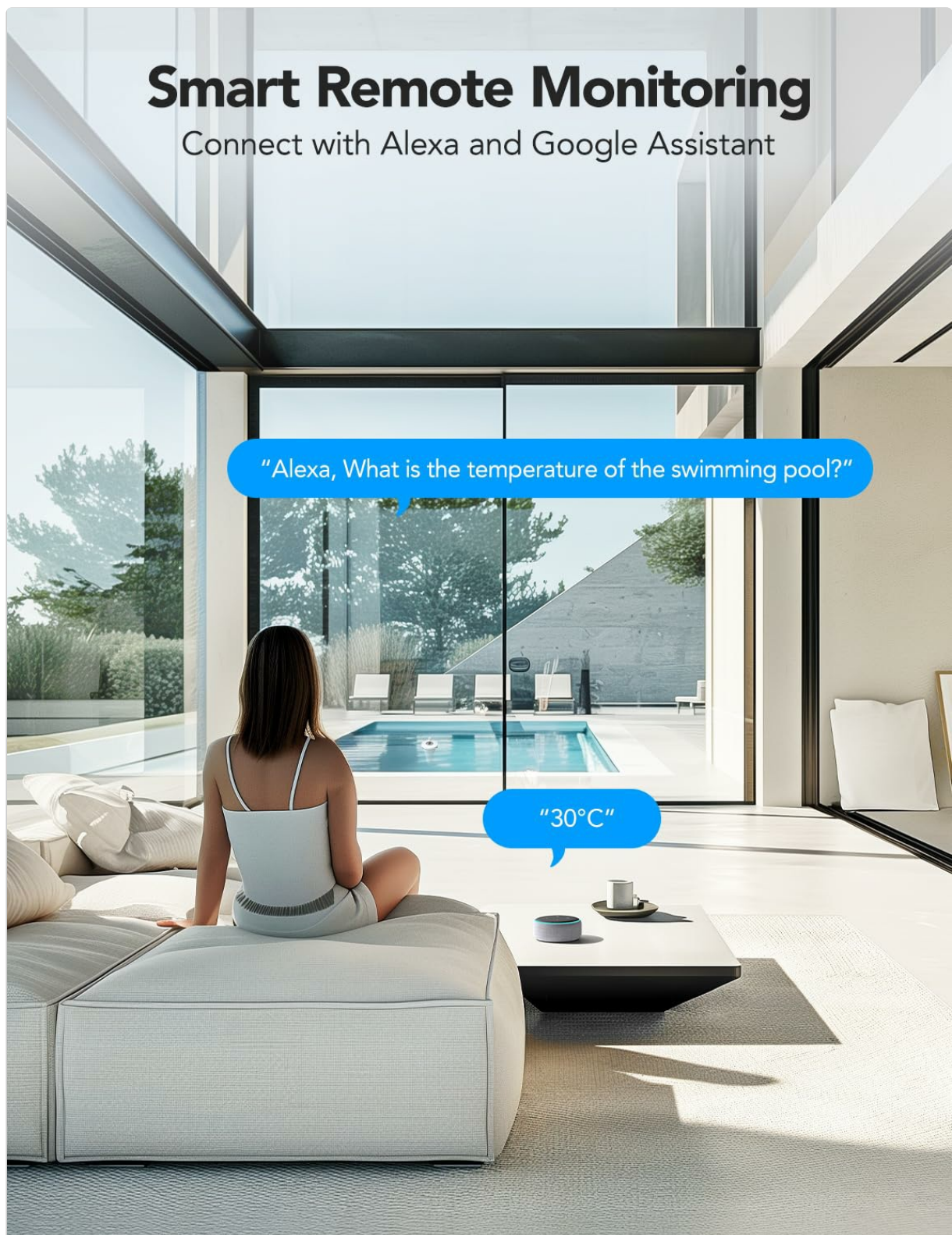


Figure 5.2: Voice control integration with smart home devices.

5.5 Placement

The pool thermometers are designed to float in water. Use the included fixed rope to prevent them from drifting away. The orange loop rubber is replaceable and helps make the thermometer visible on the water surface.

GoveeLife Smart Thermometer P1

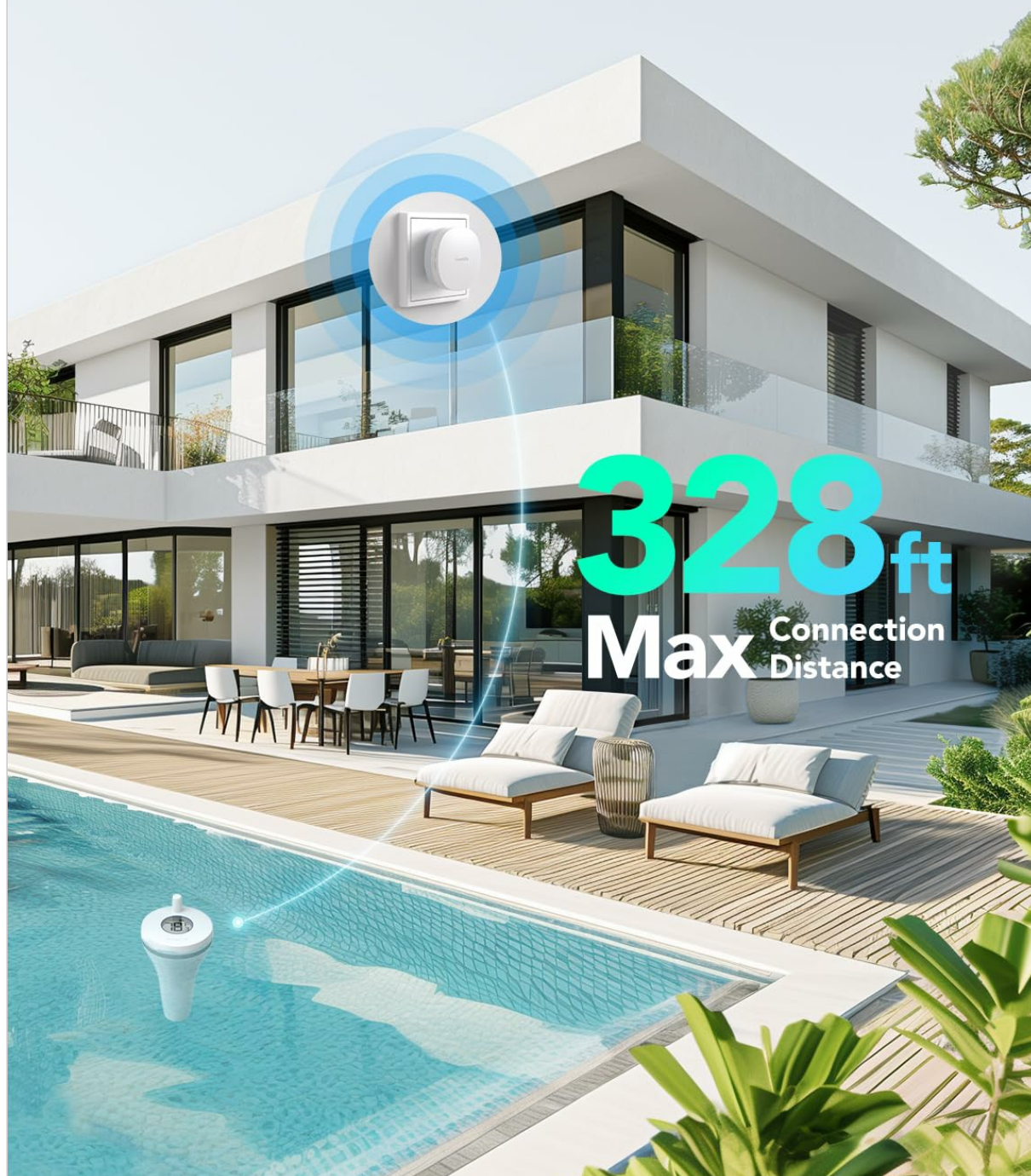


Figure 5.3: Thermometer placement in a pool with remote monitoring range.

6. MAINTENANCE

6.1 Battery Replacement

The pool thermometers are powered by 2 AAA batteries. Battery life is approximately 1 year in standard mode and up to 3 years in power-saving mode (configurable via the app). When the battery is low, an alert icon will appear on the screen, and the app will send a low battery notification. Replace batteries promptly to ensure continuous monitoring.

6.2 Waterproof Care

The GoveeLife Pool Thermometer is IPX7 waterproof, meaning it can withstand immersion in water. Ensure the battery compartment is securely sealed after battery replacement to maintain its waterproof integrity.



Figure 6.1: IPX7 Waterproof protection.

6.3 Cleaning

Clean the thermometer's exterior with a soft, damp cloth. Avoid using abrasive cleaners or solvents that could damage the device.

7. TROUBLESHOOTING

- **No Data in App:** Ensure the Wi-Fi Gateway is powered on and connected to your 2.4GHz Wi-Fi

network. Verify that the pool thermometers are within range of the gateway (up to 328ft / 100m). Reduce obstacles between the gateway and sensors if signal is weak.

- **Pairing Issues:** If sensors fail to pair, ensure batteries are correctly installed and charged. Try restarting the Govee Home App and repeating the pairing process.
- **Inaccurate Readings:** Check if the thermometer is fully immersed in the water. Ensure the sensor is clean and free from debris.
- **App Connectivity:** Confirm your smartphone has an active internet connection. Restart the Govee Home App or your phone if connectivity issues persist.

8. SPECIFICATIONS

Feature	Detail
Model Number	B5109
Brand	GoveeLife
Temperature Range	-4°F to 158°F (-20°C to 70°C)
Temperature Accuracy	±0.5°C
Refresh Speed	2 seconds
Waterproof Rating	IPX7
Connectivity	Wi-Fi (2.4GHz) via Gateway
Wireless Range	Up to 328ft (100m) between gateway and sensors
Power Source	2 x AAA Batteries per thermometer
Battery Life	1 year (standard mode), 3 years (power-saving mode)
Special Features	APP Control, High Accuracy, Low Battery Indicator, Waterproof, Voice Assistant Compatible

9. OFFICIAL PRODUCT VIDEO

Your browser does not support the video tag.

Video 9.1: An overview of the Govee Smart Hygrometer Thermometer Series, showcasing various models and their features, including app connectivity and real-time monitoring. This video provides a general understanding of Govee's smart temperature and humidity monitoring solutions.

10. WARRANTY AND SUPPORT

For warranty information, technical support, or to report an issue, please refer to the Govee Home App's 'My Profile' section, which includes options for 'Rapid Replacement' and 'Report an Issue'. You can also find FAQs and contact information within the app.

GoveeLife is committed to providing reliable products and customer service. Please visit the official Govee website or contact customer support for further assistance.

Related Documents - B5109

<div>GoveeLife</div> <div>User Manual</div> <div>Model:H5108+H5151 Smart Thermometer R1 with Wi-Fi Gateway</div>	<div>GoveeLife Smart Thermometer R1 User Manual (H5108+H5151)</div> <div>User manual for the GoveeLife Smart Thermometer R1 with Wi-Fi Gateway (Models H5108 and H5151), covering setup, specifications, troubleshooting, and customer service.</div>
<div>H5194英文说明书</div> <div>版本：1.0</div> <div>料号：新建料号</div> <div>成型尺寸：70x100（mm）</div> <div>材料：80G特瓦纸</div> <div>印刷：单墨</div> <div>工艺：1670双铜(封面封底+透膜)</div> <div>折叠方式：骑马钉</div> <div>页数：24页</div>	<div>GoveeLife H5194 Smart Wireless Meat Thermometer User Manual</div> <div>This user manual provides comprehensive instructions for the GoveeLife H5194 Smart Wireless Meat Thermometer. It covers safety precautions, package contents, device overview, setup, operation, troubleshooting, specifications, and compliance information for effective meat temperature monitoring.</div>
<div>GoveeLife</div> <div>Model:H5191/H5192</div> <div>User Manual</div> <div>Smart Wireless Meat Thermometer</div>	<div>GoveeLife H5191/H5192 Smart Wireless Meat Thermometer User Manual</div> <div>Comprehensive user manual for the GoveeLife H5191/H5192 Smart Wireless Meat Thermometer, covering safety instructions, package contents, setup, operation, troubleshooting, and specifications. Learn how to use your smart meat thermometer for accurate cooking temperatures.</div>
<div>GoveeLife</div> <div>User Manual</div> <div>Model:H5104 Smart Thermo-Hygrometer</div>	<div>GoveeLife H5104 Smart Thermo-Hygrometer User Manual</div> <div>User manual for the GoveeLife H5104 Smart Thermo-Hygrometer. Learn how to use the device, connect to the Govee Home app, and troubleshoot common issues.</div>
<div>GoveeLife</div> <div>User Manual</div> <div>Model:H5110 Smart Thermo-Hygrometer</div>	<div>GoveeLife H5110 Smart Thermo-Hygrometer User Manual</div> <div>User manual for the GoveeLife H5110 Smart Thermo-Hygrometer. Learn about specifications, installation, app pairing, usage, and troubleshooting for this humidity and temperature sensor.</div>
<div>GoveeLife</div> <div>User Manual</div> <div>Model:H5043+H5107 Wi-Fi Smart Gateway 2 with Smart Thermo-Hygrometer 3 Lite</div>	<div>GoveeLife H5043+H5107 Wi-Fi Smart Gateway 2 and Smart Thermo-Hygrometer 3 Lite User Manual</div> <div>User manual for the GoveeLife Wi-Fi Smart Gateway 2 (Model H5043) and Smart Thermo-Hygrometer 3 Lite (Model H5107). Includes setup instructions, specifications, and troubleshooting.</div>