

Manuals+

[Q & A](#) | [Deep Search](#) | [Upload](#)

manuals.plus /

- > [NINJA](#) /
- > [Ninja Woodfire Pro Connect XL Electric BBQ Grill & Smoker User Manual](#)

NINJA OG901EU

Ninja Woodfire Pro Connect XL Electric BBQ Grill & Smoker User Manual

Brand: NINJA | **Model:** OG901EU

1. PRODUCT OVERVIEW

The Ninja Woodfire Pro Connect XL is a versatile outdoor electric grill and smoker designed for comprehensive cooking control. It features app connectivity, an integrated digital probe, and 7-in-1 cooking functions, including grilling, smoking, air frying, roasting, baking, dehydrating, and reheating. Its Woodfire Technology uses natural wood pellets to infuse authentic smoky flavors into your food, without the need for charcoal or gas. The unit is weather-resistant, making it suitable for year-round outdoor use.



Figure 1.1: Ninja Woodfire Pro Connect XL with app control and wood pellets.

The large cooking capacity allows for preparing meals for a crowd, accommodating up to 10 hamburgers, 6 steaks, or 2 whole 3 kg chickens.

2. WHAT'S INCLUDED

Your Ninja Woodfire Pro Connect XL package includes the following components:

- Ninja Woodfire Pro Connect XL BBQ Unit (EU plug)
- Digital Temperature Probe
- Removable Smoker Box
- Crisper Basket
- Grill Plate
- Grease Tray and Drip Pan
- 2 x Wood Pellet Starter Bags (All-Purpose Blend and Robust Blend)
- Pellet Scoop



CONTENU DE LA BOÎTE

Figure 2.1: Box Contents - All included accessories.

3. SETUP

Before first use, ensure all packaging materials are removed. Place the unit on a stable, heat-resistant, and level surface outdoors. Ensure adequate clearance from walls and other appliances. Insert the grill plate, grease tray, and drip pan into their designated positions. Connect the power cord to a suitable outdoor electrical outlet.

PROFONDEUR 50.9cm

**HAUTEUR
40.2cm**



**LARGEUR
56.6cm**

DIMENSIONS DU PRODUIT

Figure 3.1: Product Dimensions.

4. OPERATING INSTRUCTIONS

4.1 Powering On and Basic Controls

Press the power button to turn on the unit. Use the control dial and buttons on the front panel to select cooking functions, set temperature, and adjust time. The digital display will show current settings and cooking progress.

NINJA®

Pro Connect

Surveillez et contrôlez facilement votre cuisson depuis l'application Ninja® Pro Connect et recevez des notifications en temps réel directement sur votre smartphone.

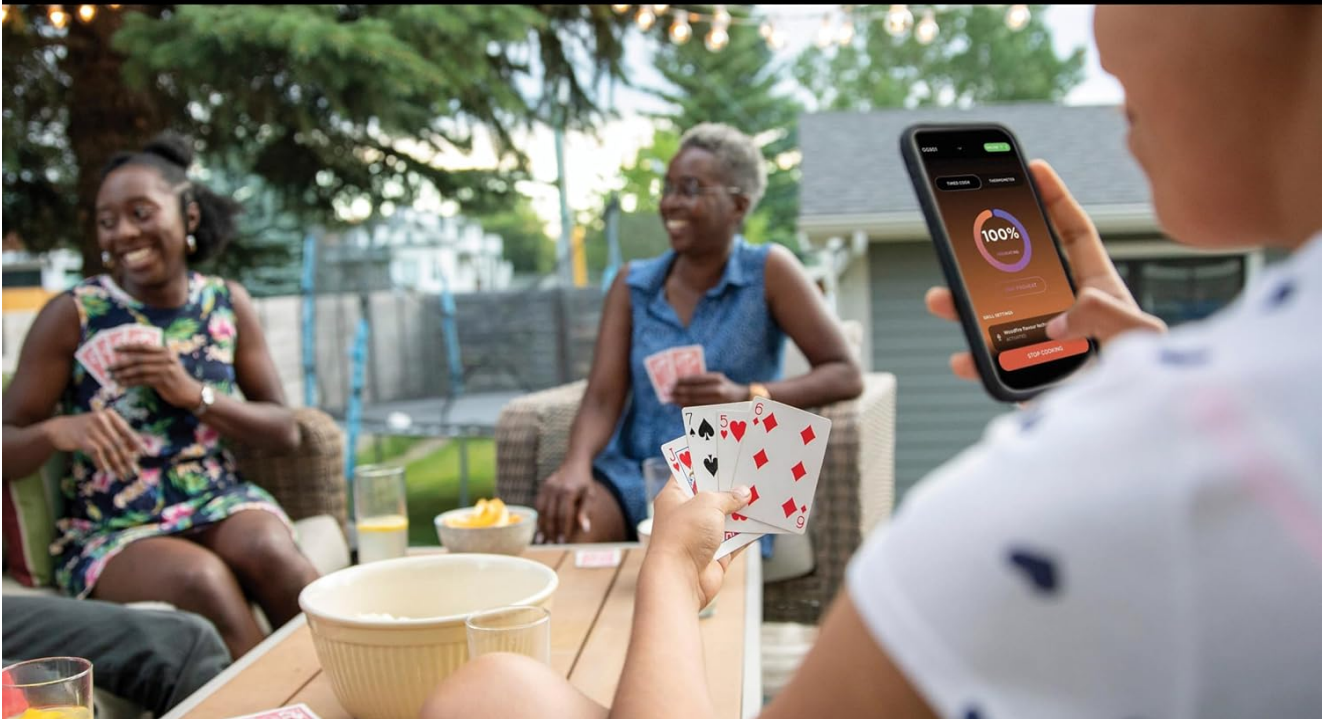


Figure 4.1: Front control panel of the grill.

4.2 App Control (Ninja Pro Connect)

The Ninja Woodfire Pro Connect XL can be controlled remotely via the Ninja Pro Connect app on your smartphone. This allows you to adjust cooking settings, monitor progress, and receive real-time notifications.



BARBECUE D'EXTÉRIEUR 7-EN-1

Pour griller, fumer, frire sans huile, rôtir, cuire au four, déshydrater et réchauffer

Figure 4.2: Monitor and control your cooking easily from the Ninja® Pro Connect app and receive real-time notifications directly on your smartphone.

The app provides real-time updates, allowing you to enjoy your outdoor activities without constantly monitoring the grill.



BARBECUE

Profitez de la cuisson grillée à point d'un barbecue traditionnel, avec tous les avantages d'un barbecue électrique.

Figure 4.3: Enjoy your BBQ without constantly monitoring it.

4.3 7-in-1 Outdoor Cooking Functions

This appliance offers seven versatile cooking functions:

- **BBQ:** For traditional grilling with authentic char and searing.
- **Smoker:** Infuse deep, smoky flavors into your food using wood pellets.
- **Air Fry:** Achieve crispy results with little to no oil.
- **Roast:** Perfect for tender meats and vegetables.
- **Bake:** Ideal for outdoor baking, such as breads or desserts.
- **Dehydrate:** Create dried fruits, jerky, and more.
- **Reheat:** Warm up leftovers while maintaining flavor and texture.



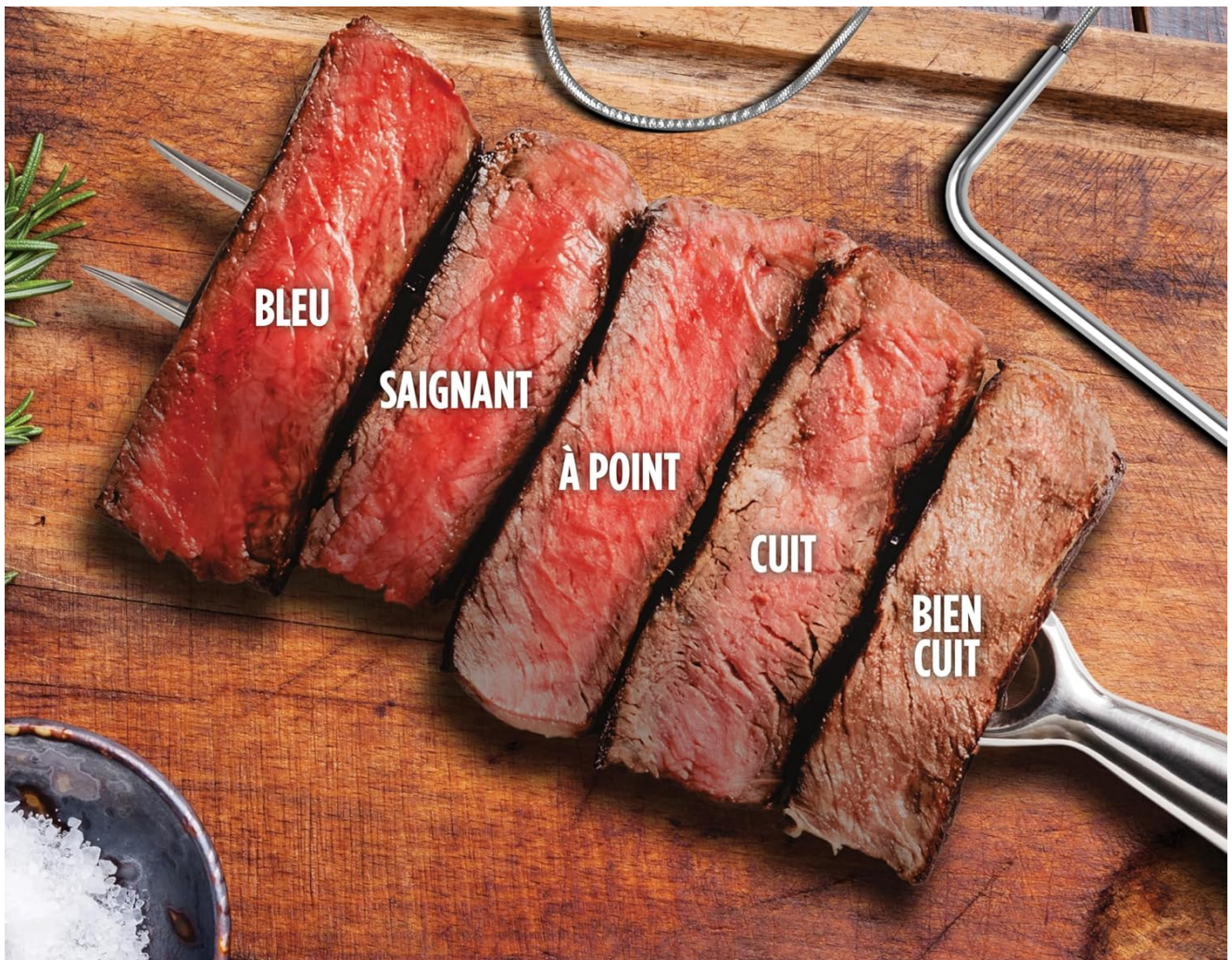
THERMOSONDE INTÉGRÉE

Cuisez en toute confiance en profitant
d'une cuisson parfaite à tous les coups.

Figure 4.4: 7-in-1 Outdoor BBQ: For grilling, smoking, air frying, roasting, baking, dehydrating, and reheating.

4.4 Integrated Temperature Probe and Smart Cook System

The integrated digital probe ensures precise cooking by monitoring the internal temperature of your food. Simply insert the probe into the thickest part of the food and select your desired doneness using the Smart Cook System. The grill will automatically adjust to achieve perfect results.



SMART COOK SYSTEM

De bleu à bien cuit, choisissez votre type de cuisson préféré et le Smart Cook System fait tout le travail !

Figure 4.5: Integrated Temperature Probe: Cook with confidence for perfect results every time.



30 % D'ESPACE SUPPLÉMENTAIRE*
Cuisinez pour toute une tablée : jusqu'à 10 steaks hachés, 6 steaks ou 2 poulets entiers de 3 kg.

** vs OG700 series*

Figure 4.6: Smart Cook System: From rare to well-done, choose your preferred doneness and the Smart Cook System does all the work!

4.5 Woodfire Technology

The Woodfire Technology uses 100% natural wood pellets to generate authentic smoky flavors. The integrated smoker box and convection fan ensure even distribution of heat and smoke around your food. Only a small scoop of pellets is needed for each cooking session.



GRANULÉS NINJA WOODFIRE INCLUS

Savourez des plats délicieusement fumés avec les kits d'essais de granulés Woodfire inclus.

Figure 4.7: Woodfire Technology: Powered by electricity, flavored by natural wood pellets. Integrated Smoker, Convection Fan, and Natural Wood Pellets.

To add woodfire flavor, simply fill the pellet scoop with Ninja Woodfire Pellets and add them to the integrated smoker box. Close the lid and select the desired cooking function with the Woodfire option enabled.

TECHNOLOGIE WOODFIRE

Alimenté par l'électricité, aromatisé par des granulés de bois naturel.



FUMOIR INTÉGRÉ

Une dose de granulés suffit pour apporter une saveur fumée à tous vos plats.

VENTILATEUR À CONVECTION

Fait circuler uniformément la chaleur et la fumée autour des aliments.

GRANULÉS DE BOIS NATUREL

Les granulés Ninja Woodfire sont composés à 100 % de bois naturel. Ils sont utilisés pour leur saveur, et non comme combustible, si bien qu'une petite quantité suffit.

Figure 4.8: Ninja Woodfire Pellets Included: Enjoy deliciously smoked dishes with the included Woodfire pellet starter kits.

4.6 Cooking Capacity

The Ninja Woodfire Pro Connect XL offers a generous cooking surface, providing 30% more space compared to the OG700 series. This allows you to cook larger quantities of food simultaneously.



PROFITEZ DE VOTRE BARBECUE
Savourez le plaisir de grillades en extérieur sans avoir besoin de surveiller votre barbecue constamment.

Figure 4.9: 30% More Cooking Space: Cook for a crowd: up to 10 burgers, 6 steaks, or 2 whole 3 kg chickens.

4.7 Official Product Video

Video 4.1: Ninja Woodfire Pro Connect XL Electric BBQ. This video demonstrates the key features and cooking capabilities of the grill, including its 7-in-1 functions, app control, and Woodfire Technology.

5. MAINTENANCE AND CLEANING

Regular cleaning ensures optimal performance and longevity of your Ninja Woodfire Pro Connect XL. The non-stick grill plate is designed for easy cleaning.



FAITES DES GRILLADES OÙ ET QUAND VOUS VOULEZ AVEC LE NINJA WOODFIRE ELECTRIQUE

Profitez de toute la saveur du barbecue, sans les inconvénients du charbon, du gaz et des flammes.

Figure 5.1: Easy to Clean: Non-stick grill plate for easy cleaning.

After each use, allow the unit to cool completely. Remove the grill plate, crisper basket, grease tray, and drip pan. Wash these components with warm, soapy water or place them in the dishwasher if they are dishwasher-safe. Wipe down the main unit with a damp cloth. Do not immerse the main unit in water.

6. TROUBLESHOOTING

If you encounter any issues with your Ninja Woodfire Pro Connect XL, please refer to the following common troubleshooting tips:

Problem	Possible Cause	Solution
Unit does not power on	Not plugged in; power outlet issue; circuit breaker tripped	Ensure power cord is securely plugged in. Test outlet with another device. Check household circuit breaker.

Problem	Possible Cause	Solution
Food not cooking evenly	Overcrowding; lid not fully closed; improper temperature setting	Avoid overcrowding the grill plate. Ensure lid is fully closed during cooking. Verify correct temperature setting for your recipe.
No smoke flavor when using pellets	Insufficient pellets; pellets not ignited; smoker box not properly inserted	Ensure smoker box is filled with pellets and properly inserted. Confirm Woodfire function is activated. Allow time for pellets to ignite and produce smoke.
App connectivity issues	Bluetooth/Wi-Fi off; app not updated; grill too far from device	Ensure Bluetooth and Wi-Fi are enabled on your device. Update the Ninja Pro Connect app. Move closer to the grill for better signal.

For further assistance, please contact Ninja customer support.

7. SPECIFICATIONS

- **Model Number:** OG901EU
- **Dimensions (L x W x H):** 51 x 57 x 41 cm
- **Weight:** 18.3 Kilograms
- **Material:** Stainless Steel
- **Power Source:** Electric Corded
- **Outdoor Use Rating:** IPX4 (Weather Resistant)
- **Cooking Functions:** BBQ, Smoker, Air Fry, Roast, Bake, Dehydrate, Reheat
- **Special Features:** App Control, Digital Temperature Probe, Woodfire Technology
- **UPC:** 622356276573

8. WARRANTY AND SUPPORT

Your Ninja Woodfire Pro Connect XL comes with a manufacturer's warranty. Please refer to the warranty card included in your product packaging for specific terms and conditions. For product support, spare parts, or to register your product, visit the official Ninja website or contact their customer service department.