

PULUZ PU5060

PULUZ 24x24 Inch Large Photo Studio Light Box Instruction Manual

Model: PU5060 | Brand: PULUZ

[Introduction](#) [Safety Information](#) [Package Contents](#) [Setup](#) [Operating](#)
[Instructions](#) [Maintenance](#) [Troubleshooting](#) [Specifications](#) [Warranty & Support](#)

1. INTRODUCTION

Thank you for choosing the PULUZ 24x24 Inch Large Photo Studio Light Box. This professional-grade photo booth is designed to provide optimal lighting and versatile shooting options for high-quality product photography. With its dimmable LED lights, multiple backdrops, and easy assembly, it is ideal for capturing clear and detailed images of various items, including jewelry, food, and other small to medium-sized products.

2. SAFETY INFORMATION

Kind Reminder: The studio product must be connected to a 12V 3A power adapter before use. Please make sure to use a proper power adapter, otherwise it may cause serious damage to the LED light chips.

- Do not expose the light box to water or excessive moisture.
- Keep out of reach of children.
- Ensure proper ventilation during use to prevent overheating.
- Unplug the power adapter when not in use or during cleaning.

3. PACKAGE CONTENTS

Please verify that all items listed below are included in your package:

- 1 x Light Box (24x24 inch)

- 2 x Light Boards (with 120 LED lights)
- 6 x Color Backdrops (3-Color PVC + 3-Color Non-Woven: black, white, orange, blue, red, green)
- 1 x Light Diffuser
- 1 x Power Supply (12V 3A adapter required, not always included)
- 1 x Phone Tripod
- 1 x User Manual



Image: All components included in the PULUZ 24x24 inch Light Box package, neatly arranged.

4. SETUP

The PULUZ Light Box features a particular folding design for quick and easy assembly. No brackets, screws, or complicated lighting layouts are required.

1. **Unfold the Light Box:** Carefully take out the folded light box from its carrying bag. Expand the product by unfolding its sides until it forms a cube shape.
2. **Secure with Velcro:** The sides of the light box will have Velcro strips. Align and press these strips together to secure the structure.
3. **Install Light Boards:** Position the two LED light boards inside the top of the light box. Ensure they are securely attached to provide even illumination.
4. **Connect Power:** Connect the power cable from the light boards to the provided 12V 3A power adapter. Plug the adapter into a suitable power outlet.
5. **Add Backdrop:** Choose one of the 6 provided backdrops and slide it into the designated slots at the bottom and back of the light box.



Image: Visual guide showing the four main steps for assembling the light box, from unfolding to connecting power.

5. OPERATING INSTRUCTIONS

5.1. Power and Dimming

The light box is equipped with 120 high-quality LED light beads. Use the inline controller on the power cable to manage the lighting.

- **On/Off:** Press the power button to turn the lights on or off.
- **Stepless Dimming:** Adjust the brightness from 0% to 100% to achieve your desired lighting effect. The lights offer a high color rendering index (CRI 95+) and no strobe effect for natural-looking photos.



What's in the box

- 1 x Light Box
- 2 x Light Boards
- 6 x Color Backdrops
- < 1 x Light Diffuser
- 1 x Power Supply
- 1 x Phone Tripod
- 1 x User Manual


Image: Illustration demonstrating the stepless dimming capability of the light box, showing various brightness levels from 10% to 100% on different product photos.

5.2. Using Backdrops


The light box comes with 6 different colored backdrops (3-Color PVC + 3-Color Non-Woven) to suit various product photography needs. Simply slide the desired backdrop into the designated slots inside the light box.

- **Color Variety:** Easily change background colors to match your product or desired aesthetic.
- **Material:** The backdrops are designed to be dustproof, wrinkle-resistant, and easy to clean.


6 Color Backdrops



Dustproof



Wrinkle Resistance



Easy to Clean




Image: Display of the six multi-color backdrops (blue, red, green, orange, white, black) and examples of how they can be used with a product.

5.3. Shooting Perspectives

Unleash your creativity with the light box's three-window design, allowing for versatile shooting angles.

- **Large Front Window:** Ideal for sweeping shots and general product views.
- **Small Front Window:** Perfect for capturing mesmerizing macros and detailed close-ups.
- **Top Window:** Use the top opening for captivating overhead shots.
- **Dynamic Lighting:** Experiment by positioning the light box on its side to dynamically change the direction of the light source and achieve different photographic goals.

Installation Steps

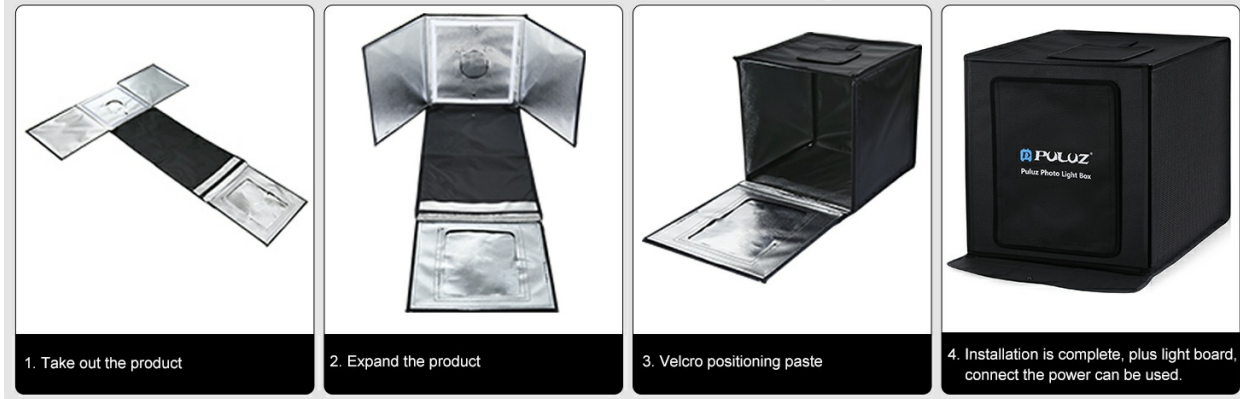


Image: Visual representation of various shooting perspectives, including front, top, and side views, demonstrating the flexibility of the light box.

5.4. Using the Light Diffuser

The included light diffuser is essential for photographing highly reflective products, helping to soften the light and capture more details of the contours.

- **Reduce Reflections:** Place the diffuser over the LED lights to spread the light more evenly and minimize harsh reflections on shiny surfaces.
- **Soften Shadows:** The diffuser helps create softer, more natural shadows, enhancing the overall quality of your product images.



Image: A close-up of the light diffuser, illustrating its texture and purpose in softening light.

6. MAINTENANCE

- **Cleaning:** Use a soft, dry cloth to wipe down the exterior and interior surfaces of the light box. For stubborn spots, a slightly damp cloth can be used, ensuring the unit is unplugged and completely dry before next use.
- **Backdrop Care:** The backdrops are easy to clean. Wipe them with a damp cloth if they get dirty. Store them flat or rolled to prevent creases.
- **Storage:** When not in use, fold the light box back into its compact form and store it in the durable and waterproof carry bag provided. This protects it from dust and damage.

7. TROUBLESHOOTING

- **Lights Not Turning On:**

- Ensure the power adapter is correctly plugged into both the light box and a working power outlet.
- Verify that the power adapter is a 12V 3A model, as incorrect adapters can prevent operation or cause damage.
- Check the inline controller for any damage or loose connections.

- **Uneven Lighting:**

- Adjust the position of the light boards to ensure they are evenly distributed.
- Use the included light diffuser to soften and spread the light more uniformly, especially for reflective objects.

- **Backdrops Not Staying in Place:**

- Ensure the backdrops are correctly inserted into the designated slots or clips within the light box.

- **Product Reflections:**

- Utilize the light diffuser to minimize reflections on shiny products.
- Experiment with different shooting angles and light intensity using the dimming function.

8. SPECIFICATIONS

Feature	Detail
Model Name	PU5060
Product Dimensions	24x24 inches (approx. 60x60 cm)
Light Source	120 LED Lights
Color Temperature	5500 Kelvin
Color Rendering Index (CRI)	95+
Dimming Range	0% - 100% (Stepless)
Wattage	24 Watts
Backdrops Included	6 (3-Color PVC + 3-Color Non-Woven)
Material	Nylon
Hardware Interface	Micro USB 2.0 Type B

9. WARRANTY & SUPPORT

The PULUZ 24x24 Inch Large Photo Studio Light Box comes with a **3-month manufacturer's warranty**. This warranty covers defects in materials and workmanship under normal use.

For technical support, troubleshooting assistance, or warranty claims, please contact PULUZ Official Store - US directly through your Amazon purchase history or visit the [PULUZ Store on Amazon](#).

