

NAPCAT N1S24

NAPCAT 5MP Solar Wireless Security Camera Outdoor System User Manual

Model: N1S24

INTRODUCTION

This manual provides detailed instructions for the installation, operation, and maintenance of your NAPCAT 5MP Solar Wireless Security Camera Outdoor System. This system is designed to provide reliable outdoor surveillance with features such as solar power, high-definition video, advanced motion detection, and flexible storage options. Please read this manual thoroughly before using the product to ensure proper setup and optimal performance.



Figure 1: Overview of the NAPCAT 5MP Solar Wireless Security Camera Outdoor System.

WHAT'S IN THE BOX

Verify that all components are present in the package before proceeding with installation.

What's in the box ?



x1

Wireless NVR



x4

Camera



x1

Power Adapter



x1

HDMI Cable



x1

1m Network Cable



x4

10ft(3m)USB-C
Extension Cord



x4

Solar Panel



x4

Solar Panel Mounting
Bracket.



x1

USB Mouse



x2

Camera
Holding Bracket



x4

Pack of Screws



x1

Reset Needle Pin



x4

Surveillance Poster



x1

Quick Start Guide



x4

Screw Positioning
Stickers

Figure 2: Package Contents.

- Wireless NVR (1 unit)
- Wireless Security Cameras (4 units)
- Power Adapter (1 unit)
- HDMI Cable (1 unit)
- 1m Network Cable (1 unit)
- 10ft (3m) USB-C Extension Cord (4 units)
- Solar Panels (4 units)

- Solar Panel Mounting Bracket (4 units)
- USB Mouse (1 unit)
- Camera Holding Bracket (2 units)
- Pack of Screws (4 packs)
- Reset Needle Pin (1 unit)
- Surveillance Poster (1 unit)
- Quick Start Guide (1 unit)
- Screw Positioning Stickers (4 units)

SETUP

1. NVR Initial Setup

1. **Connect the NVR:**

- Connect the NVR to a monitor using the provided HDMI cable.
- Connect the NVR to your router using the provided network cable for internet access.
- Connect the power adapter to the NVR and plug it into a power outlet. The NVR will power on automatically.

2. **Initial Configuration:** Follow the on-screen prompts to complete the initial setup, including language selection, time zone, and creating an administrator password.



Figure 3: NVR Connection Setup.

2. Camera and Solar Panel Installation

The cameras are designed for outdoor use and are IP66 weatherproof. The solar panels provide continuous power to the cameras, eliminating the need for frequent battery charging.

1. **Charge Cameras:** Ensure cameras are sufficiently charged before installation. While solar panels provide continuous power, an initial charge may be beneficial.
2. **Choose Installation Location:** Select a location that provides optimal camera view and sufficient sunlight exposure for the solar panel. Ensure the camera is within range of the NVR's Wi-Fi signal.
3. **Mounting Options for Solar Panel:**
 - **Option 1: Separate Installation:** Mount the solar panel in a location with maximum sunlight exposure, and connect it to the camera using the provided USB-C extension cord. This allows for flexible placement of both the camera and the solar panel.

- **Option 2: Integrated Installation:** Mount the solar panel directly onto the camera bracket, ideal for locations where both can receive adequate sunlight.
4. **Secure Mounting:** Use the provided screws and mounting brackets to securely attach the cameras and solar panels to a wall or eave. Use the screw positioning stickers for accurate drilling.
 5. **Connect Solar Panel to Camera:** Plug the USB-C cable from the solar panel into the camera's charging port.

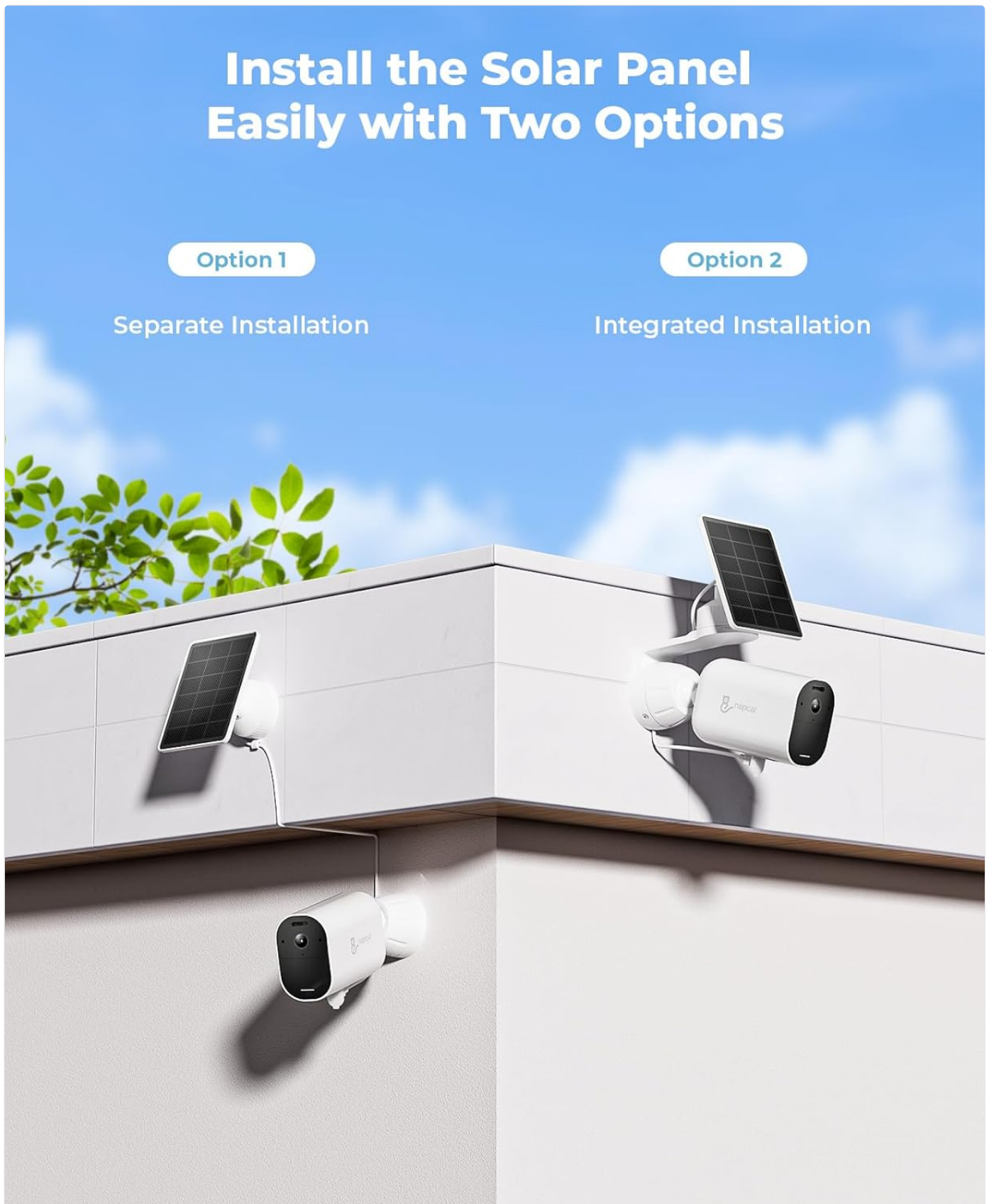


Figure 4: Solar Panel Installation Options.

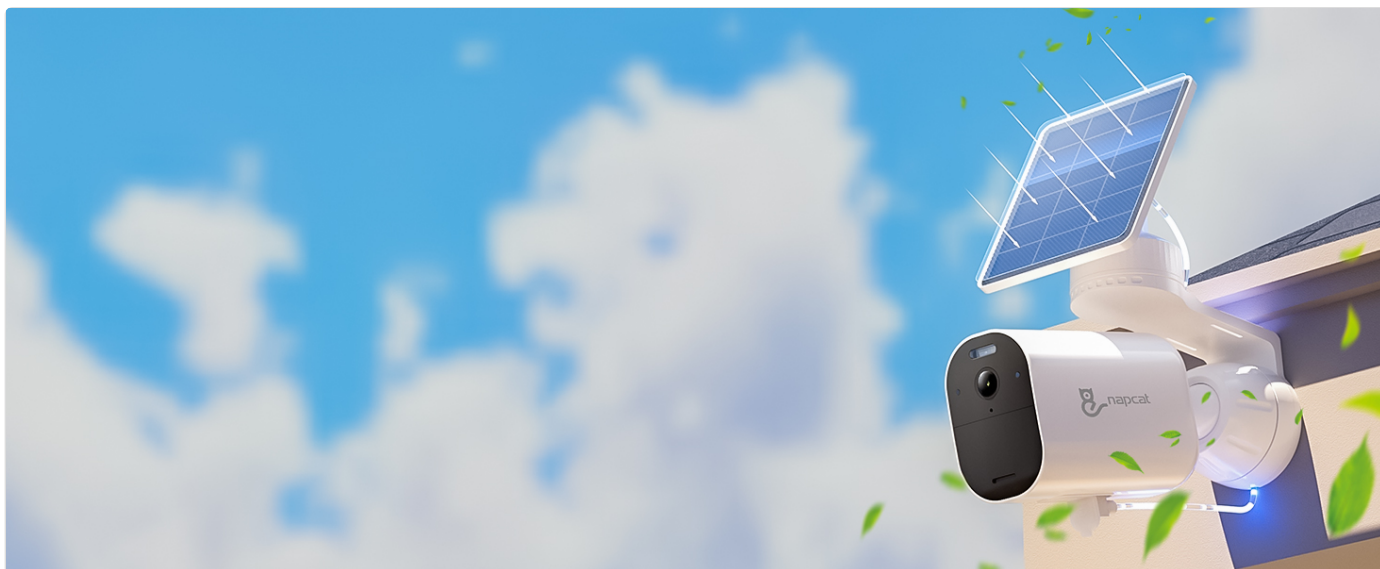


Figure 5: Solar Power for Continuous Operation.

3. App Installation and Pairing

To access your camera system remotely and manage settings, download the "Napcat Life" app.

1. **Download the App:** Search for "Napcat Life" on the Google Play Store (for Android) or Apple App Store (for iOS) and install it on your smartphone or tablet.
2. **Create Account:** Open the app and follow the instructions to create a new account.
3. **Add Device:**
 - On the NVR interface, navigate to the device pairing section.
 - In the Napcat Life app, tap "Add Device" and scan the QR code displayed on the NVR monitor.
 - Follow the on-screen prompts in the app to complete the pairing process.

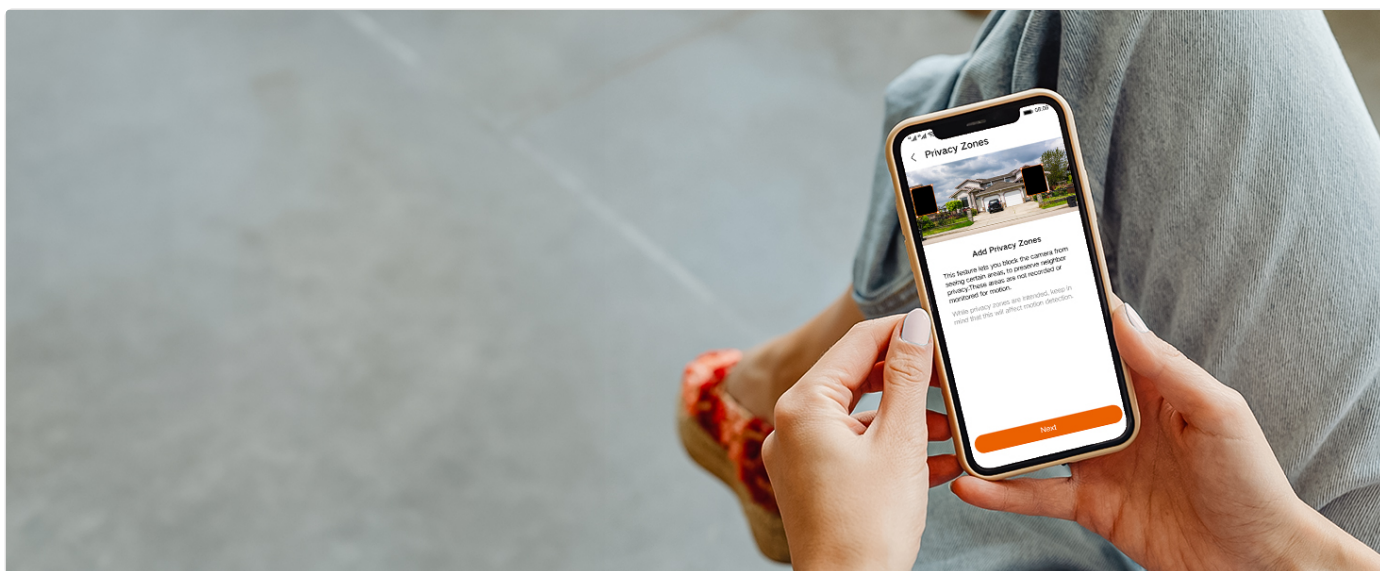


Figure 6: Napcat Life App Interface.

OPERATING THE SYSTEM

1. Viewing Options

Your NAPCAT system offers multiple ways to view live footage and recordings:

- **Local Monitor (HDMI):** Connect a monitor directly to the NVR via HDMI for local viewing without internet access. Use the included USB mouse for navigation.

- **Smartphone App ("Napcat Life"):** View live feeds, playback recordings, and manage settings remotely from your smartphone or tablet.
- **PC Client:** Install the NAPCAT PC client software on your computer for remote viewing and management.

Local & Remote Control



**HDMI
Local Control**



**App Remote
Control**



**PC
Remote Control**



Figure 7: Local and Remote Control Options.

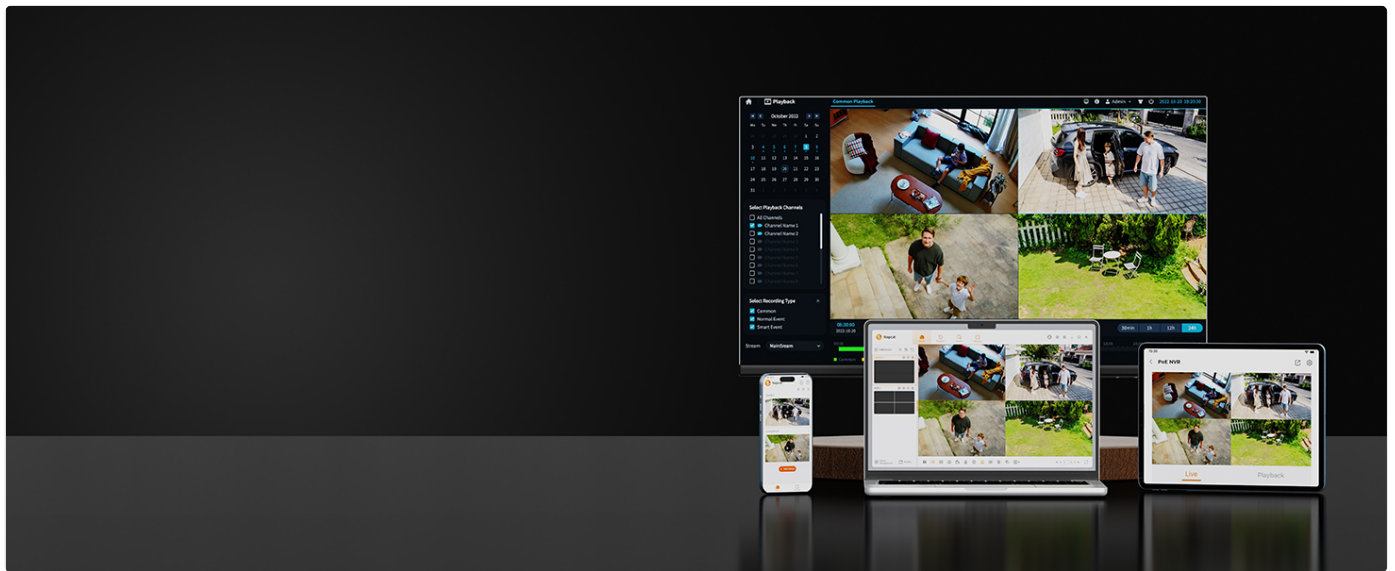


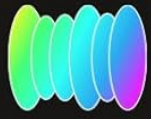
Figure 8: Multi-Device Viewing.

2. Video Quality and Night Vision

The cameras provide 5MP Super HD resolution, offering clearer images than traditional 1080p systems. They also feature advanced night vision capabilities.

- **5MP Super HD:** Enjoy detailed and sharp video footage.
- **Color Night Vision:** The system can capture full-color video even in low-light conditions, providing more informative footage than black-and-white night vision.
- **135° Wide Viewing Angle:** Minimizes blind spots and provides extensive coverage.

5MP Super HD Views



6-Layer
HD lenses



5MP
Resolution



F=1.6, f=2.8mm



3DNR
Noise Reduction



Figure 9: 5MP Super HD Lens Technology.

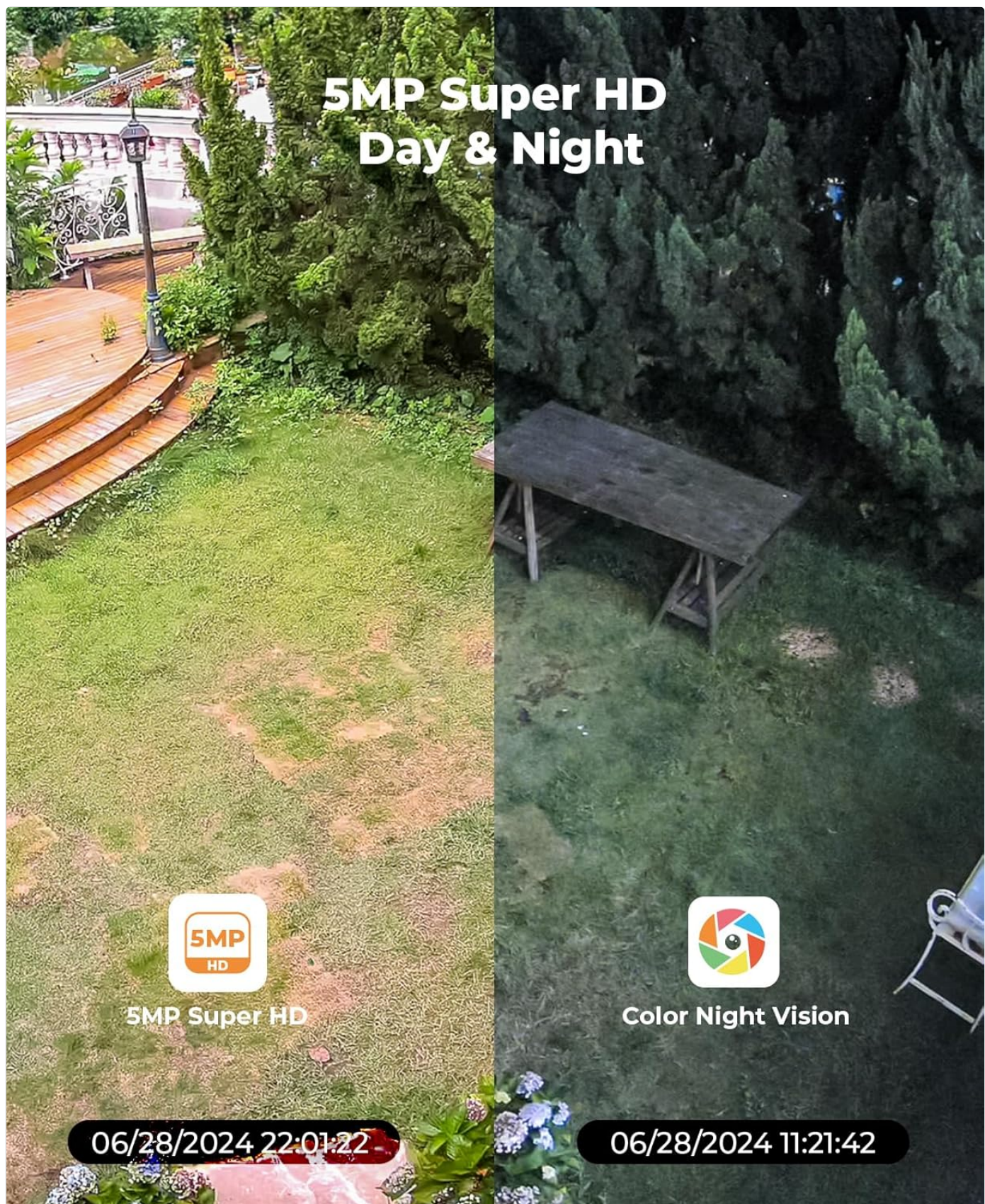


Figure 10: Day and Color Night Vision Comparison.

3. Motion Detection and Alerts

The system is equipped with advanced detection features to minimize false alarms and provide timely notifications.

- **PIR Sensor:** Passive Infrared sensor detects heat signatures for accurate motion detection.
- **Human/Vehicle Detection:** Advanced AI algorithms differentiate between humans, vehicles, and other moving objects, reducing irrelevant alerts.
- **Strobe Lights and Siren Alarms:** When motion is detected, the cameras can activate built-in strobe lights and a siren to

deter intruders.

- **Customizable Activity Zones:** Define specific areas within the camera's view where motion detection should be active, ignoring other areas.
- **Instant Alerts:** Receive push notifications on your smartphone when motion is detected.



Figure 11: AI Human and Vehicle Detection.



Figure 12: Smart Deterrence with Strobe and Siren.



Figure 13: Customizable Activity Zones.

4. Two-Way Audio

Each camera is equipped with a built-in microphone and speaker, enabling two-way communication.

- **Communicate Remotely:** Speak to visitors or deter unwanted guests directly through the camera using the Napcat Life app.



Figure 14: Two-Way Audio Communication.

5. Storage Options (No Monthly Fee)

The system offers flexible and expandable local storage solutions without recurring subscription fees.

- **Included 32GB MicroSD Card:** The NVR comes with a 32GB microSD card for immediate local storage.
- **Expandable HDD:** The system supports expandable local storage up to 16TB via an external Hard Disk Drive (HDD), which is not included.

Dual Storage Options, No Monthly Fee



**32GB MicroSD
Card Included**



**Expandable HDD
Up to 16TB
(Not included)**



Figure 15: Dual Storage Options.

6. Connectivity

The NVR supports robust connectivity options for stable and versatile placement.

- **Ethernet Cable:** For a stable and reliable wired connection to your home network.
- **2.4/5GHz Dual-Band WiFi:** Provides flexibility in NVR placement and ensures strong wireless connection to cameras.

Ethernet Cable for Stable Connection



Dual-Band WiFi for Versatile Placement



Figure 16: Connectivity Options.

MAINTENANCE

- **Cleaning:** Regularly wipe the camera lenses and solar panels with a soft, damp cloth to ensure clear vision and efficient solar charging. Avoid abrasive cleaners.
- **Battery Health:** While solar-powered, extreme weather or prolonged periods of low sunlight may affect battery levels. Monitor battery status via the app and ensure solar panels are free from obstructions.
- **Firmware Updates:** Periodically check for firmware updates through the Napcat Life app or NVR interface. Updates often

include performance improvements and security enhancements.

TROUBLESHOOTING

Problem	Possible Cause	Solution
Camera not connecting to NVR.	Out of Wi-Fi range; low camera battery; interference.	Move camera closer to NVR; ensure solar panel is charging effectively or manually charge; reduce Wi-Fi interference.
No video feed.	Camera powered off; NVR not powered; network issue.	Check camera power/battery; ensure NVR is plugged in; verify NVR network connection.
Frequent false motion alerts.	Sensitivity too high; objects like trees/pets triggering.	Adjust motion detection sensitivity in app; set up activity zones to exclude irrelevant areas; enable human/vehicle detection.
Poor night vision quality.	Dirty lens; insufficient ambient light for color night vision.	Clean camera lens; ensure there's some ambient light for optimal color night vision, or rely on IR black-and-white mode.
Cannot access system remotely.	NVR not connected to internet; app issues; firewall settings.	Check NVR's internet connection; restart app/phone; ensure router firewall isn't blocking NVR access (consult router manual if needed).

SPECIFICATIONS

Feature	Detail
Model Number	N1S24
Video Capture Resolution	5MP Super HD
Viewing Angle	135 Degrees
Night Vision Range	15 Meters
Connectivity Technology	2.4/5GHz Dual-Band WiFi
Power Source	Solar Powered, Battery Powered (1 Lithium Ion battery included)
Included Components	Power Adapter, Quick Start Guide, Solar Panels, WiFi NVR, Wireless Security Cameras
Number of Channels	8
Special Features	Non-stop Solar Power, Wire-Free Installation, Expandable Local Storage, AI Detection, Spotlight Color Night Vision, Two-Way Audio, IP66 Weatherproof, Smart Deterrence
Storage	32GB MicroSD card included, expandable up to 16TB HDD (not included)
Item Dimensions (L x W x H)	30.5 x 25.4 x 20.3 Centimetres (Package)
Item Weight	4.35 kg

Feature	Detail
Manufacturer	NAPCAT



WARRANTY AND SUPPORT

For warranty information, technical support, or any inquiries regarding your NAPCAT security camera system, please contact NAPCAT customer support.

- **Manufacturer:** NAPCAT
- **Support Email:** support@napcat.net
- Please refer to your purchase documentation for specific warranty terms and conditions.

© 2024 NAPCAT. All rights reserved.

Related Documents

	<p>Napcat N2818D PoE NVR System Quick Start Guide</p> <p>Comprehensive quick start guide for the Napcat N2818D PoE NVR System. Covers unpacking, component identification, setup, installation, app access, troubleshooting, and compliance for this 4K 8MP security camera system.</p>
	<p>Napcat Quick Start Guide: Setting Up Your Smart Camera</p> <p>A concise guide to setting up your Napcat smart camera, including package contents, appearance, LED indicators, setup steps, troubleshooting, and compliance information.</p>