

## Rinsmola MD053

# Rinsmola MD053 Wireless Earbuds Instruction Manual

Model: MD053 | Brand: Rinsmola

## INTRODUCTION

Thank you for choosing the Rinsmola MD053 Wireless Earbuds. These earbuds are designed to provide a high-fidelity audio experience with advanced features such as Bluetooth 5.3 connectivity, Environmental Noise Cancellation (ENC) for clear calls, and a comfortable, lightweight, and waterproof design. This manual will guide you through the setup, operation, and maintenance of your new earbuds to ensure optimal performance.

## WHAT'S IN THE BOX

Upon unboxing, please ensure all the following items are present:

- Wireless Bluetooth Earbuds x 2 (Left and Right)
- 350mAh Charging Case x 1
- USB-C Cable x 1
- User's Manual x 1

## Smart Touch Control



Image: Package contents of the Rinsmola MD053 Wireless Earbuds.

## PRODUCT OVERVIEW

### Earbud Design and Features

The Rinsmola MD053 earbuds are designed for comfort and performance. Each earbud weighs approximately 3 grams, ensuring a lightweight and secure fit. They feature a 14.2mm dynamic speaker for high-fidelity stereo sound and built-in microphones with Environmental Noise Cancellation (ENC) for clear voice calls.

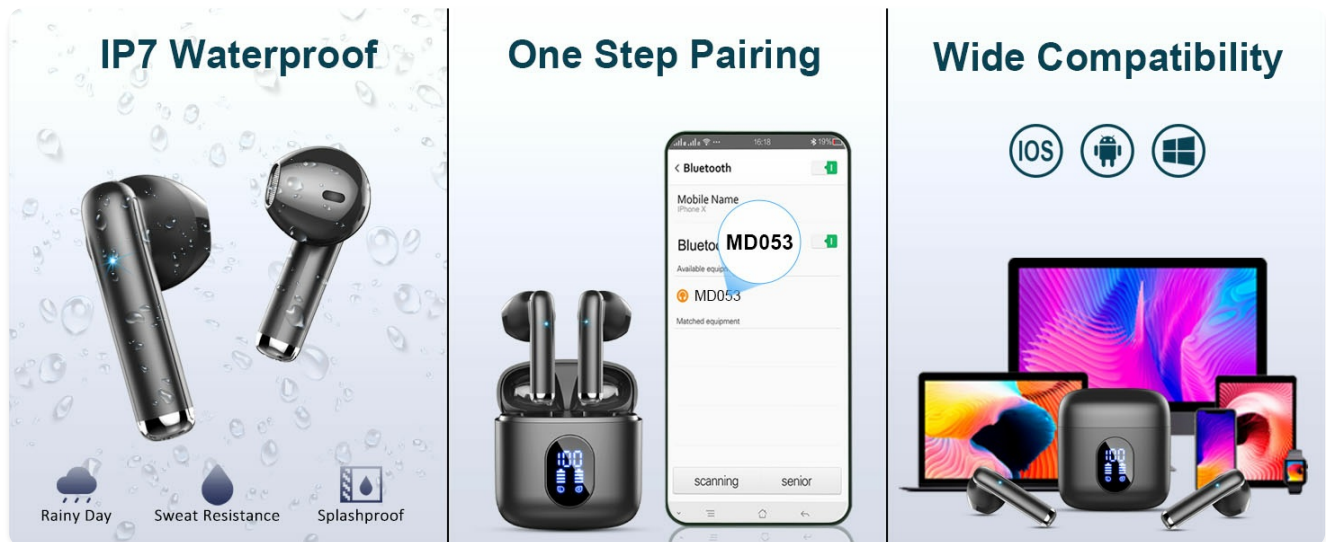
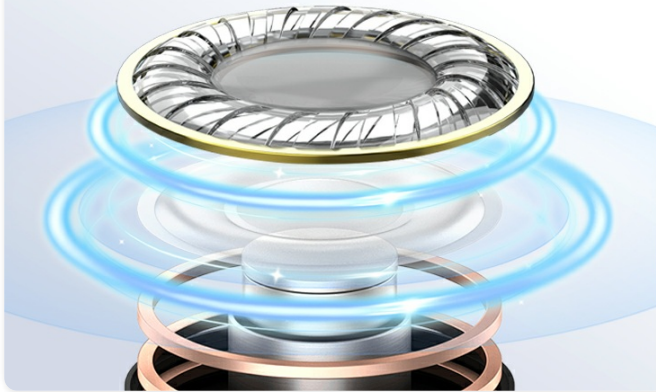


Image: Ergonomic design for comfortable and lightweight wear.

## 14.2mm Dynamic Driver



Main Mic  
for Talk

40dB



ENC Noise  
Cancellation Mic

Image: Internal components highlighting the 14.2mm dynamic driver and ENC microphone.

## Charging Case

The compact charging case provides extended battery life and features an LED digital display to show the remaining power for both the case and individual earbuds. It supports USB-C fast charging.

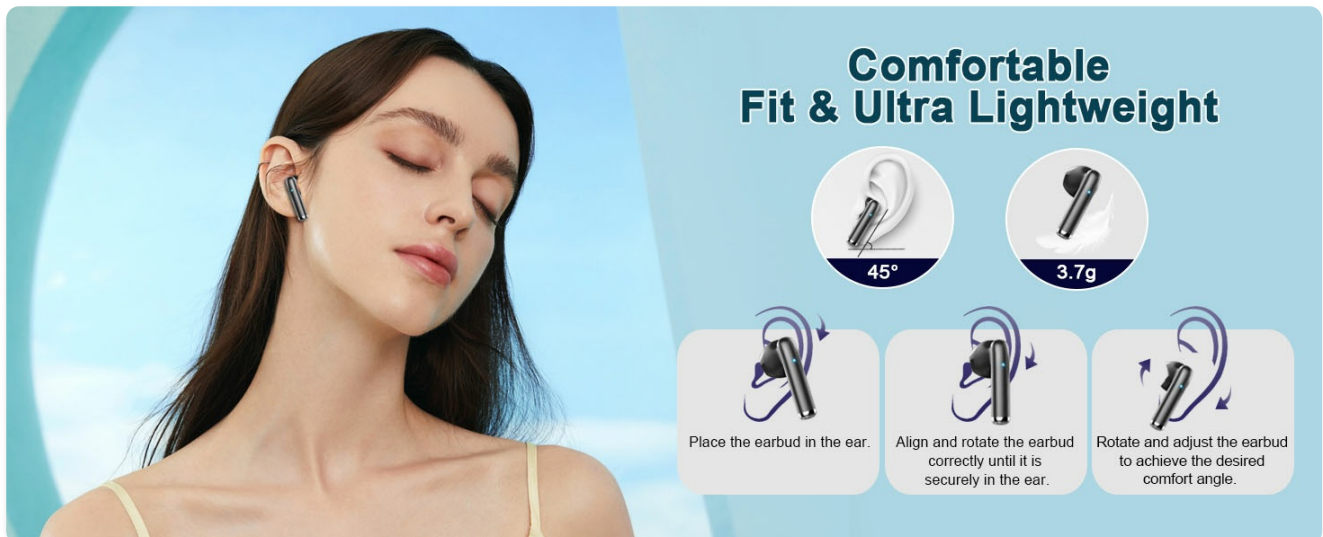


Image: Charging case with dual digital power display.

## SETUP

### Charging the Earbuds and Case

Before first use, fully charge the earbuds and the charging case. The LED display on the case will indicate the charging status and battery levels.

1. Place both earbuds into the charging case.
2. Connect the provided USB-C cable to the charging port on the case and the other end to a USB power source (e.g., wall adapter, computer USB port).
3. The LED display will show the charging progress. A full charge for the case takes approximately 1.5 hours.

Once fully charged, the earbuds provide 5-6 hours of continuous use, and the charging case can recharge them

approximately 4 times, offering up to 30 hours of total playback.

### Pairing with Your Device

The Rinsmola MD053 earbuds utilize Bluetooth 5.3 for a fast and stable connection. They support automatic pairing after the initial setup.

1. **Initial Pairing:**

- Open the charging case. The earbuds will automatically enter pairing mode.
- On your device (smartphone, tablet, laptop), go to Bluetooth settings and turn on Bluetooth.
- Search for available devices and select "MD053" from the list.
- Once connected, you will hear a confirmation tone, and the earbuds will be ready for use.

2. **Automatic Reconnection:** After the initial pairing, the earbuds will automatically connect to the last paired device when removed from the charging case.



Image: Features including IP7 Waterproof, One-Step Pairing, and Wide Compatibility.

## OPERATING INSTRUCTIONS

### Touch Controls

Each earbud features a sensitive touch control key for managing music, calls, and voice assistance. The controls are identical for both earbuds unless specified.

**Earbud Touch Control Functions**

Action	Function
Tap L/R x 2	Play/Pause music
Tap R x 1	Volume Up
Tap L x 1	Volume Down
Tap R 2S (Hold for 2 seconds)	Next Track

Action	Function
Tap L 2S (Hold for 2 seconds)	Previous Track
Tap L/R x 2	Answer Call
Tap L/R 2S (Hold for 2 seconds)	Hang up/Reject Call
Tap L/R x 3	Activate Voice Assistant (Siri, Google Assistant, etc.)

Image: Detailed overview of touch control functions.

## Single/Twin Mode

The earbuds can be used together for stereo sound (Twin Mode) or individually (Single Mode). To use a single earbud, simply remove one from the case; it will automatically connect to your device. To switch back to Twin Mode, remove the other earbud from the case.

## MAINTENANCE

### Water Resistance (IP7)

The Rinsmola MD053 earbuds feature an IP7 waterproof nano-coating, protecting them from sweat and light rain. This makes them suitable for workouts and outdoor activities. However, they are not designed for swimming or submersion in water for extended periods.

**Important: Do not expose the charging case to water, as it is not waterproof.**

### Cleaning

To maintain optimal performance and hygiene:

- Regularly wipe the earbuds and charging case with a soft, dry, lint-free cloth.
- Clean the charging contacts on both the earbuds and the case with a dry cotton swab to ensure proper charging.
- Avoid using abrasive materials, alcohol, or chemical cleaners.

## TROUBLESHOOTING

If you encounter any issues with your Rinsmola MD053 Wireless Earbuds, please refer to the following common solutions:

- **Earbuds not pairing or connecting:**
  - Ensure both earbuds are fully charged.
  - Turn off and then turn on Bluetooth on your device.
  - Forget "MD053" from your device's Bluetooth list and attempt to re-pair.

- Place both earbuds back into the charging case, close the lid, wait a few seconds, then open it again to reset.
- **Only one earbud working:**
  - Ensure both earbuds are charged.
  - Place both earbuds back into the charging case, close the lid, and then open it again. This often re-syncs them.
  - If the issue persists, try resetting the earbuds and re-pairing them with your device.
- **Low volume or poor sound quality:**
  - Adjust the volume on both your device and using the earbud touch controls.
  - Ensure the earbuds are clean and free of debris that might block the speaker.
  - Check for any obstructions between your device and the earbuds that might interfere with the Bluetooth signal.
- **Charging case not charging:**
  - Verify the USB-C cable is securely connected to both the case and the power source.
  - Try a different USB-C cable or power adapter.
  - Ensure the charging port on the case is clean.

## SPECIFICATIONS

Feature	Detail
Model Name	MD053
Brand	Rinsmola
Connectivity Technology	Wireless (Bluetooth)
Bluetooth Version	5.3
Bluetooth Range	15 Meters
Audio Driver Size	14.2 Millimeters
Noise Control Features	Call Noise Cancellation (ENC)
Water Resistance Level	IP7 Waterproof
Battery Life (Earbuds)	5-6 Hours (single charge)
Battery Life (with Case)	Up to 30 Hours
Charging Time	1.5 Hours (case)
Charging Port	USB-C
Earbud Weight	3 Grams (each)

Feature	Detail
Charging Case Weight	35 Grams
Control Method	Touch Control
Compatible Devices	iOS, Android (5.0+), Smartphones, Tablets, Laptops

## WARRANTY AND SUPPORT

Rinsmola offers a **2-year warranty** on the MD053 Wireless Earbuds, ensuring quality and customer satisfaction. For any product inquiries, technical support, or warranty claims, please contact Rinsmola customer service through the retailer where you purchased the product or visit the official Rinsmola website for contact information.

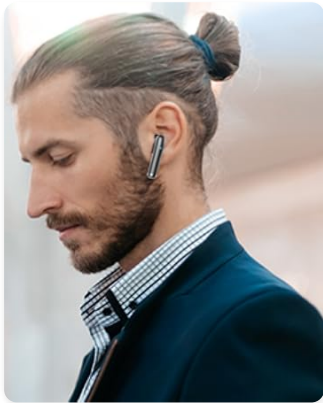


Image: Rinsmola Quality Service information.

## OFFICIAL PRODUCT VIDEO

Your browser does not support the video tag.

Video: Official Rinsmola MD053 Wireless Earbuds overview, showcasing features like Bluetooth 5.3, stereo sound, IP7 waterproof, and USB-C fast charging.