

## AZDOME Type C Port

# AZDOME Type C Port OBD Hardwire Kit User Manual

Model: Type C Port

## INTRODUCTION

---

The AZDOME Type C Port OBD Hardwire Kit provides a reliable power solution for your dash camera, enabling essential features like parking monitoring and low voltage protection. This kit ensures a clean, non-destructive installation by drawing power directly from your vehicle's OBD port, eliminating the need to occupy the cigarette lighter port.

## SAFETY GUIDELINES

---

- Ensure your vehicle's engine is off before beginning installation.
- Do not attempt to modify the hardwire kit.
- Consult a professional if you are unsure about any installation steps.
- Keep the product away from moisture and extreme temperatures.

## PACKAGE CONTENTS

---

The AZDOME Type C Port OBD Hardwire Kit includes:

- 1 x OBD Hardwire Kit (with Type C connector)

## SETUP AND INSTALLATION

---

Follow these steps to install your AZDOME OBD Hardwire Kit:

### 1. Step 1: Wiring (Routing the Cable)

Carefully route the 11-foot power cable from your dash camera's mounting location to your vehicle's OBD port. Use trim tools to tuck the cable neatly along the windshield edge, A-pillar, and under the dashboard to conceal it.

## Compatible with Your Multiple Devices

Suitable for dash cam, GPS navigator, radar detector, MP4.

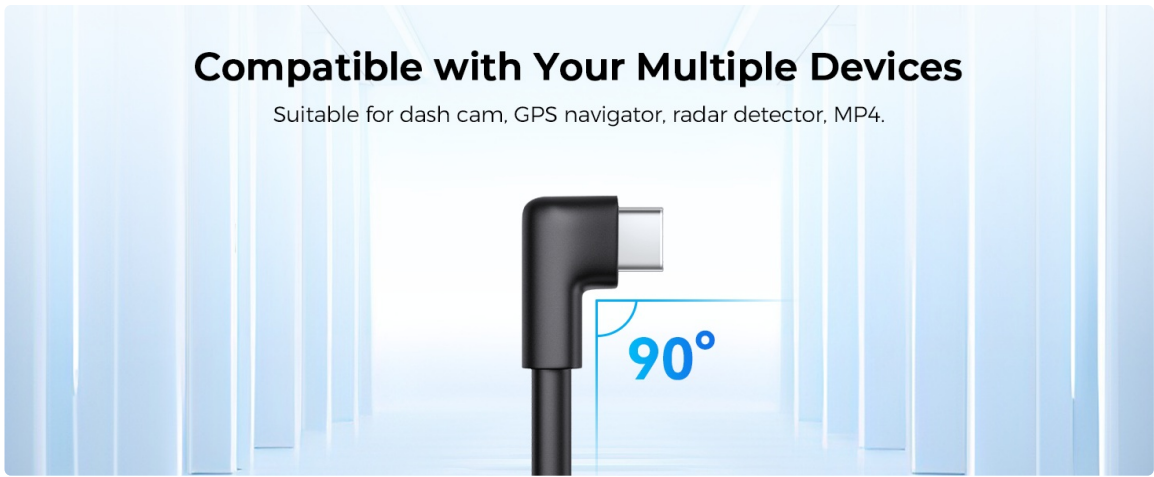


Image: Cable routing diagram for a clean installation.

### 2. Step 2: Locating the OBD Port

Identify your vehicle's OBD-II port. This port is typically located under the dashboard on the driver's side, often near the steering column or footwell. Refer to your vehicle's owner's manual if you have difficulty locating it.



Image: Common OBD port locations in various car models.

### 3. Step 3: Connecting the OBD Cable

Plug the OBD connector of the hardwire kit firmly into your vehicle's OBD-II port. Ensure a secure connection. Then, connect the Type C end of the hardwire kit to your dash camera.

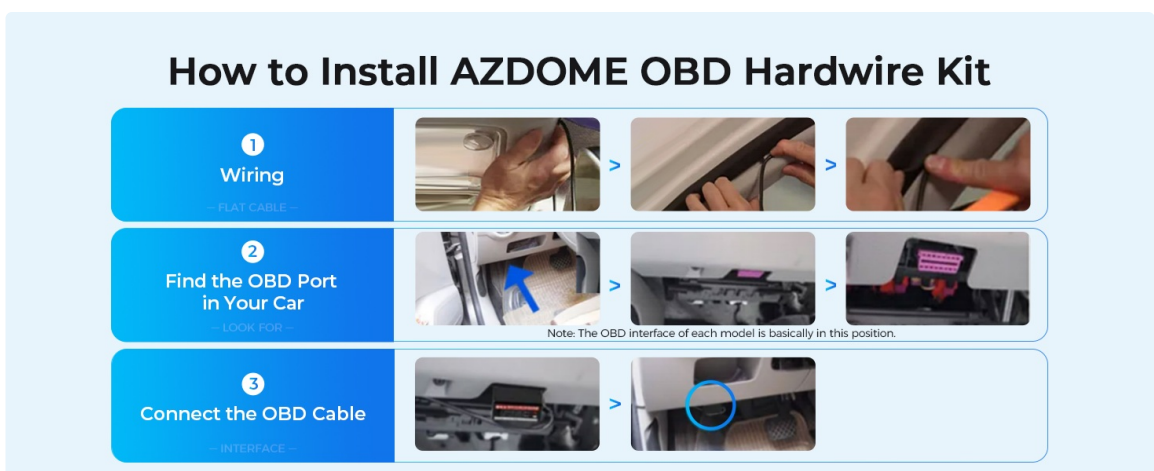


Image: Connecting the OBD hardwire kit.

Once connected, the hardwire kit will provide continuous power to your dash camera, enabling parking mode functionality.

## OPERATING FEATURES

### Parking Monitoring

This hardwire kit supports dash cameras with parking mode. When your vehicle is turned off, the AZDOME OBD hardwire kit automatically signals your dash camera to enter parking monitoring mode. This allows the dash cam to record events such as collisions or motion detection while the vehicle is parked.



Image: Explanation of 24-hour parking monitoring features.

### Low Voltage Protection

The hardwire kit includes a low voltage monitoring feature. If the vehicle's battery voltage drops below a safe threshold ( $11.8V \pm 0.2V$ ), the kit will automatically stop drawing power from the battery. This prevents over-discharge and protects your vehicle's battery from damage.

### Efficient Power Output

Equipped with high-quality cables, the AZDOME OBD hardwire kit delivers a maximum output current of 2.5A. This ensures stable and efficient power delivery to your dash camera and other compatible devices.

### Universal Compatibility

The hardwire kit is designed for dash cameras and other devices that use a Type C port for power. It is compatible with a wide range of devices, including mirror dash cams, standard dash cams, GPS units, and radar detectors.

# Engineered with Multiple Protection Features



Safety Protection



Input Short-Circuit Protection



Output High Voltage Protection



Over-Current Protection



Short-Circuit Protection



Over-Temperature Protection



Image: Universal compatibility with Type C devices.

## Product Video: Parking Monitor Setup

Your browser does not support the video tag.

Video: This video demonstrates the setup of the OBD hardwire kit for parking monitor functionality with an AZDOME dashcam, showing menu navigation for time-lapse parking mode settings.

## MAINTENANCE

The AZDOME OBD Hardwire Kit requires minimal maintenance. Ensure the connections to both the OBD port and your dash camera remain secure. Periodically check the cable for any signs of wear or damage. If any damage is observed, discontinue use and replace the kit.

## TROUBLESHOOTING

- **Dash Cam Turns Off While Driving:** Ensure the OBD connector is fully seated in the vehicle's port. Verify that your dash cam's parking mode settings are correctly configured and not causing unexpected power interruptions. Some dash cams may require specific settings to work seamlessly with continuous power.
- **Dash Cam Not Receiving Power:** Check all connections. Ensure the OBD port in your vehicle is functional. Test the dash cam with its original power adapter to rule out issues with the camera itself.
- **Parking Mode Not Activating:** Confirm that your dash camera supports parking mode and that the feature is enabled in its settings. Ensure the hardwire kit is correctly installed and providing continuous power.
- **Vehicle Battery Drains:** While the kit has low voltage protection, prolonged parking mode recording in vehicles with older or weaker batteries can still lead to discharge. Consider adjusting your dash cam's parking mode duration or sensitivity settings.

## SPECIFICATIONS

Feature	Detail
Connector Type	Type C
Input Voltage	12V-24V (Not applicable to heavy trucks)
Output Voltage	5V
Maximum Output Current	2.5A
Low Voltage Protection Voltage	11.8V $\pm$ 0.2V
Cable Length	11.48 ft / 3.5 m

### Multiple Security Protection More Reassuring to Use

Safety protection, protecting and nourishing machines.



Image: Detailed specification sheet.

## WARRANTY

This AZDOME product comes with a 1-YEAR WARRANTY from the date of purchase. Please retain your

proof of purchase for warranty claims. The warranty covers manufacturing defects but does not cover damage caused by misuse, accidents, or unauthorized modifications.

## **CUSTOMER SUPPORT**

---

For technical assistance, troubleshooting, or warranty inquiries, please contact AZDOME customer support through their official website or the retailer where the product was purchased. You can often find contact information on the product packaging or the AZDOME brand store online.

---

© 2026 AZDOME. All rights reserved.