

Kidde 30CUD10

Kidde Smoke & Carbon Monoxide Detector

Model: 30CUD10

10-Year Battery Powered, LED Warning Light Indicators

INTRODUCTION

This manual provides important information regarding the installation, operation, and maintenance of your Kidde Smoke & Carbon Monoxide Detector, model 30CUD10. This device is designed to provide early warning of smoke and carbon monoxide presence in your home, enhancing your family's safety.

The 30CUD10 features enhanced sensing technology to reduce false alarms, a 10-year sealed lithium battery for maintenance-free power, and clear LED indicators for alarm status. Please read this manual thoroughly before installation and keep it for future reference.

KEY FEATURES

- **2-IN-1 DETECTION:** Alerts you to both smoke and carbon monoxide (CO) using a single detector.
- **NEVER-CHANGE 10-YEAR BATTERY:** No low battery chirps or battery changes for 10 years. (10-yr limited warranty on alarm, not a battery performance claim.)
- **ENHANCED SENSING TECHNOLOGY:** Reduces false smoke alarms often caused by cooking. Comprehensively tested to meet the latest UL standards, meets UL 217 9th Edition, UL 2034 4th Edition, and FCC standards.
- **SELF-TESTING ALARM:** Internal components ensure alarm is always operating as expected. Not a substitute for a manual push test, perform a button test once per week to verify alarm operation.
- **3 LED NOTIFICATIONS:** LED lights indicate alarm status: green for normal operation, amber for operating error, and red for smoke or carbon monoxide detected, accompanied by a loud 85-decibel alarm.

SETUP AND INSTALLATION

Proper placement and installation are crucial for optimal performance of your smoke and carbon monoxide detector.

Choosing a Location

Install the detector on a ceiling or wall. For best results, place detectors in every sleeping area and on every level of your home. Avoid placing within 6 feet of cooking appliances to minimize false alarms. Refer to local codes and regulations for specific requirements.



SELF TESTING**

Ensures alarm is operating as expected.



***Self-testing is not a substitute for a manual push test of the alarm. Perform a button test once per week to verify proper alarm operation.*

Image Description: This diagram illustrates recommended locations for various safety devices within a typical house layout, including smoke alarms, carbon monoxide alarms, fire extinguishers, and escape ladders across different rooms like bedrooms, living room, kitchen, hallway, bathroom, basement, and garage. It emphasizes not placing alarms within 6 feet of appliances.

Mounting the Detector

The Kidde 30CUD10 features an easy twist-and-click mounting bracket for simple installation.

1. Select a suitable mounting location, ensuring it is on a flat, solid surface.
2. Attach the mounting bracket to the ceiling or wall using the provided screws.
3. Align the detector with the mounting bracket and twist clockwise until it clicks securely into place.



SIMPLE INSTALLATION

Easy twist-and-click
mounting bracket.



Image Description: A man is shown on a blue step ladder, reaching up to install the white circular Kidde detector onto a white ceiling. The image highlights the "Simple Installation" feature with a twist-and-click mounting bracket.

COMPREHENSIVELY TESTED

Designed to
UL standards.

Conforms To
Standards

UL 217 and
UL 2034



Image Description: This image displays the dimensions of the Kidde detector, showing a 5-inch diameter and a 2-inch depth. It also shows the mounting plate with a 3.3-inch screw hole spacing, indicating it's a modern 5-inch design ideal for all living spaces.

OPERATING THE DETECTOR

The Kidde 30CUD10 is designed for continuous operation with its 10-year sealed battery.

LED Indicators

The detector features an LED light that provides visual status indications:

- **GREEN LED:** Indicates normal operation. The LED will flash periodically.
- **AMBER LED:** Indicates a fault or error condition. Refer to the troubleshooting section if this light appears.
- **RED LED:** Indicates smoke or carbon monoxide detection. A loud 85-decibel alarm will sound simultaneously.

MODERN 5" DESIGN

Ideal for all
living spaces.

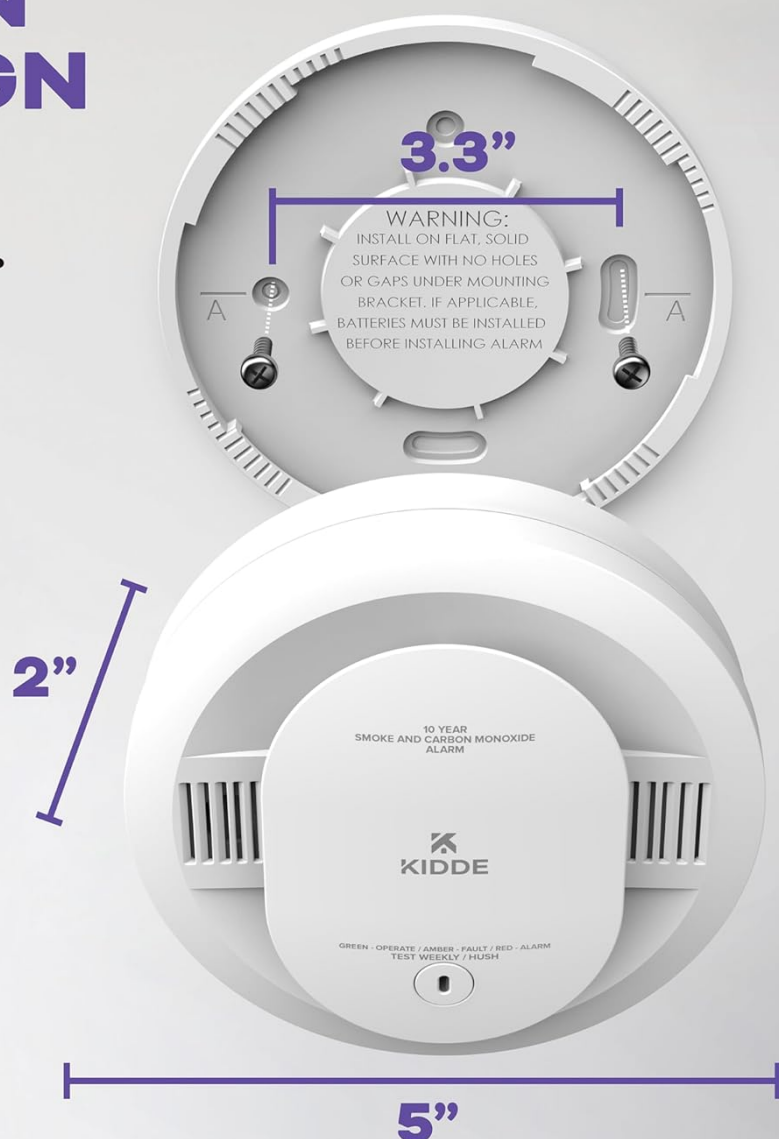


Image Description: This image displays three close-up views of the detector's LED. The top view shows a red LED indicating "Smoke or CO Detected". The middle view shows an amber LED indicating "Fault/Error". The bottom view shows a green LED indicating "Powered On" or normal operation. This illustrates the "LED Notifications" feature for at-a-glance alarm status.

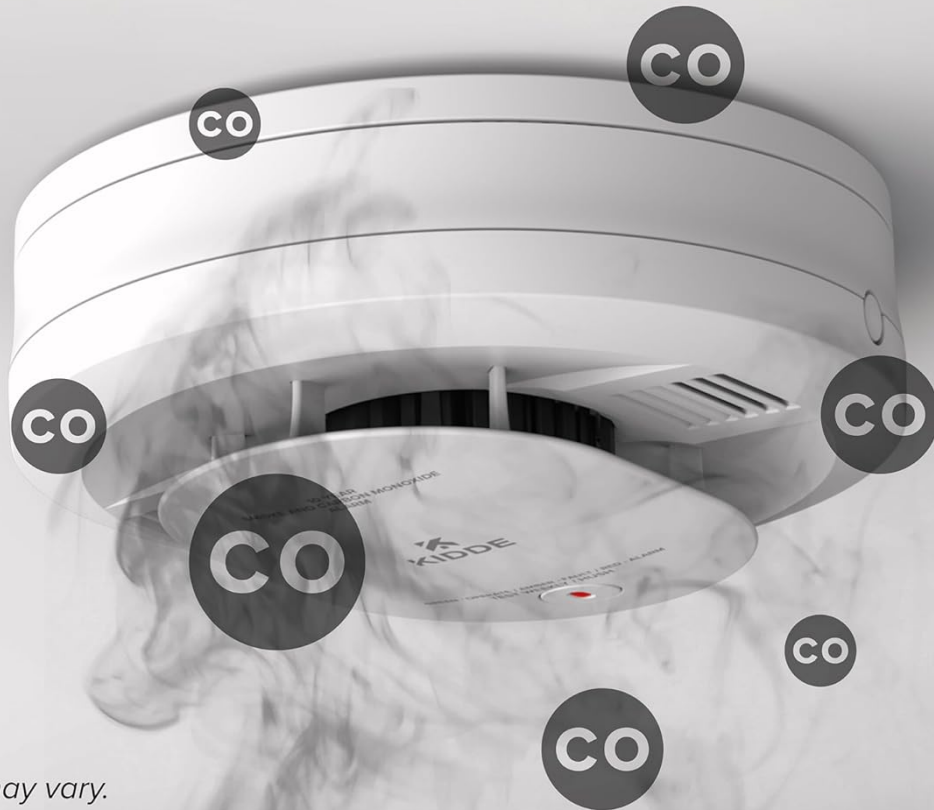
Self-Testing Function

The detector includes a self-testing feature that continuously monitors its internal components to ensure proper functioning. This is not a substitute for manual testing.



DOUBLE THE DETECTION

Alerts you to smoke &
carbon monoxide (CO).



Product may vary.

Image Description: A family (two adults and two children) is shown relaxing in a living room, with a Kidde detector visible on the ceiling. The image emphasizes the "Self Testing" feature, which ensures the alarm is operating as expected. A note clarifies that self-testing is not a substitute for a manual push test, which should be performed weekly.

Manual Test Button

It is recommended to test your alarm weekly by pressing and holding the test/silence button until the alarm sounds. This verifies the alarm's operation.

To silence a nuisance alarm (e.g., from cooking smoke), press the test/silence button. The alarm will temporarily hush for a period, then reset.

MAINTENANCE

Your Kidde 30CUD10 detector requires minimal maintenance due to its 10-year sealed battery.

- **Weekly Testing:** As mentioned, press the test/silence button weekly to ensure the alarm is functioning correctly.

- **Cleaning:** Dust and debris can affect the detector's performance. Gently vacuum the alarm's cover and vents monthly using a soft brush attachment. Do not use cleaning solvents or sprays.
- **Battery:** The 10-year sealed lithium battery is designed to power the alarm for its entire lifespan. No battery replacement is needed.
- **End-of-Life Notification:** After approximately 10 years of operation, the alarm will emit an end-of-life signal (a series of chirps) to indicate it's time for replacement. Replace the unit immediately upon receiving this notification.

TROUBLESHOOTING

Problem	Possible Cause	Solution
Alarm chirps periodically (not a full alarm)	End-of-life notification.	Replace the alarm immediately. The unit has reached the end of its 10-year lifespan.
Amber LED is lit or flashing.	Fault or error condition.	Press the test/silence button. If the amber light persists, the unit may be faulty and needs replacement.
False alarms (e.g., during cooking).	Detector too close to cooking fumes or high humidity.	Relocate the detector further from sources of smoke/steam. Use the silence feature if necessary. Ensure proper ventilation.
Alarm does not sound during test.	Unit malfunction or not activated correctly.	Ensure the unit is properly twisted onto its mounting bracket. If it still fails, the unit may be faulty and needs replacement.

SPECIFICATIONS

- **Model:** 30CUD10
- **Detection Type:** Smoke (Photoelectric) and Carbon Monoxide (Electrochemical)
- **Power Source:** 10-Year Sealed Lithium Battery
- **Alarm Loudness:** 85 decibels at 10 feet
- **Product Dimensions:** 1.88"D x 5"W x 5"H
- **Item Weight:** 10.43 ounces
- **Operating Humidity:** 10 to 95% relative humidity (RH), non-condensing
- **Upper Temperature Rating:** 100 Degrees Fahrenheit
- **Certifications:** Meets UL 217 9th Edition, UL 2034 4th Edition, FCC standards.
- **Included Components:** Alarm, Mounting Hardware, User Guide

WARRANTY INFORMATION

The Kidde 30CUD10 Smoke & Carbon Monoxide Detector comes with a 10-year limited warranty on the alarm unit. This warranty covers defects in materials and workmanship under normal use and service for a period of ten (10) years from the date of purchase. The 10-year battery is designed to last the life of the alarm and is covered under this warranty. This is not a battery performance claim, but rather a statement that the battery is sealed and not user-replaceable for the life of the product.

For detailed warranty terms and conditions, please refer to the documentation included with your product or visit the official Kidde website.

CUSTOMER SUPPORT

If you have any questions or require assistance with your Kidde Smoke & Carbon Monoxide Detector, please contact Kidde Customer Support.

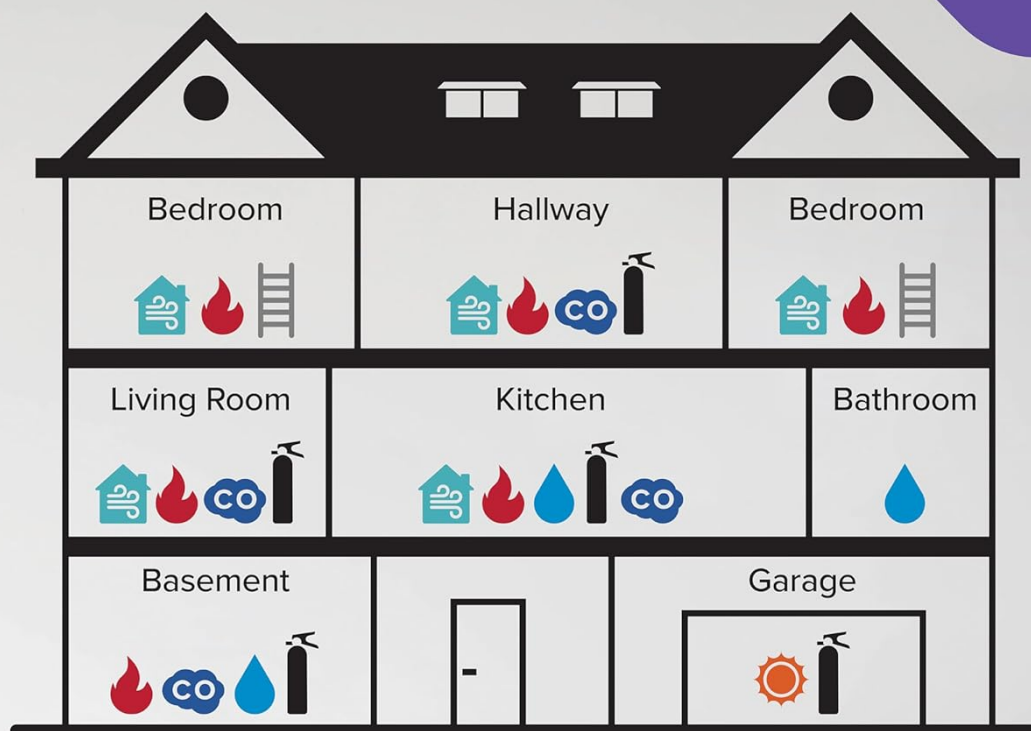
Website: www.kidde.com

Phone: Refer to the product packaging or Kidde website for the most current contact number.

Please have your model number (30CUD10) and date of purchase available when contacting support.

IMPORTANT SAFETY INFORMATION

Carbon monoxide (CO) is an invisible, odorless, and tasteless gas that can be fatal. Smoke alarms provide early warning of fire. Neither smoke nor CO alarms are substitutes for property insurance. Always ensure all occupants know the alarm sounds and have an escape plan.



Hazard Types



Smoke Alarm



Indoor Air
Quality Monitor



Fire
Extinguisher



Escape
Ladder



Carbon
Monoxide Alarm



Water Leak +
Freeze Detector



Heat
Alarm

NOTE: Do not place alarms within 6 ft of appliances. These are general recommendations only, as every home is different. See specific user guides (Smoke, CO, Ladder, etc) for more detailed location information.

Image Description: A map of the United States indicating state-level requirements for carbon monoxide (CO) and smoke alarms. States are color-coded to show if they have CO alarm requirements (blue), CO and smoke alarm requirements (red), or no specific requirements (grey). It also notes cities with 10-year smoke alarm requirements. This highlights the legal aspect of alarm installation.

© 2025 Kidde. All rights reserved.

This manual is for informational purposes only. Specifications are subject to change without notice.