



[Manuals.plus](#) /

> [MISONDA](#) /

> MISONDA 9-inch Android 14 Car Stereo Radio User Manual for Mercedes Benz Smart 453 Fortwo (2014-2020)

MISONDA BX-5Z11-D04-128G

MISONDA 9-inch Android 14 Car Stereo Radio User Manual

Model: BX-5Z11-D04-128G for Mercedes Benz Smart 453 Fortwo (2014-2020)

1. INTRODUCTION

This manual provides detailed instructions for the installation, operation, and maintenance of your MISONDA 9-inch Android 14 Car Stereo Radio. Please read this manual thoroughly before using the product to ensure proper function and safety. This unit is designed for Mercedes Benz Smart 453 Fortwo models from 2014 to 2020.

1.1 Product Overview

The MISONDA Car Stereo Radio features a 9-inch IPS touchscreen display, running on Android 14 with an octa-core processor, 6GB RAM, and 128GB internal storage. It integrates advanced features such as Wireless CarPlay, Android Auto, GPS Navigation, Bluetooth 5.0, and a Digital Sound Processor (DSP) for an enhanced in-car entertainment and navigation experience.



Image 1.1: Front view of the MISONDA 9-inch Android 14 Car Stereo Radio, highlighting the display and control buttons.

1.2 Package Contents

Verify that all items listed below are included in your package. If any items are missing or damaged, please contact customer support.

- MISONDA 9-inch Android 14 Car Stereo Radio Unit
- Power Adapter
- RCA Cable A & B
- USB Cable
- GPS Antenna
- Radio Antenna
- External Microphone
- Rear View Camera (4 LED Backup Camera)
- Installation Brackets
- Canbus Decoder (if applicable for your vehicle model)
- Instruction Manual (this document)

Dimensions



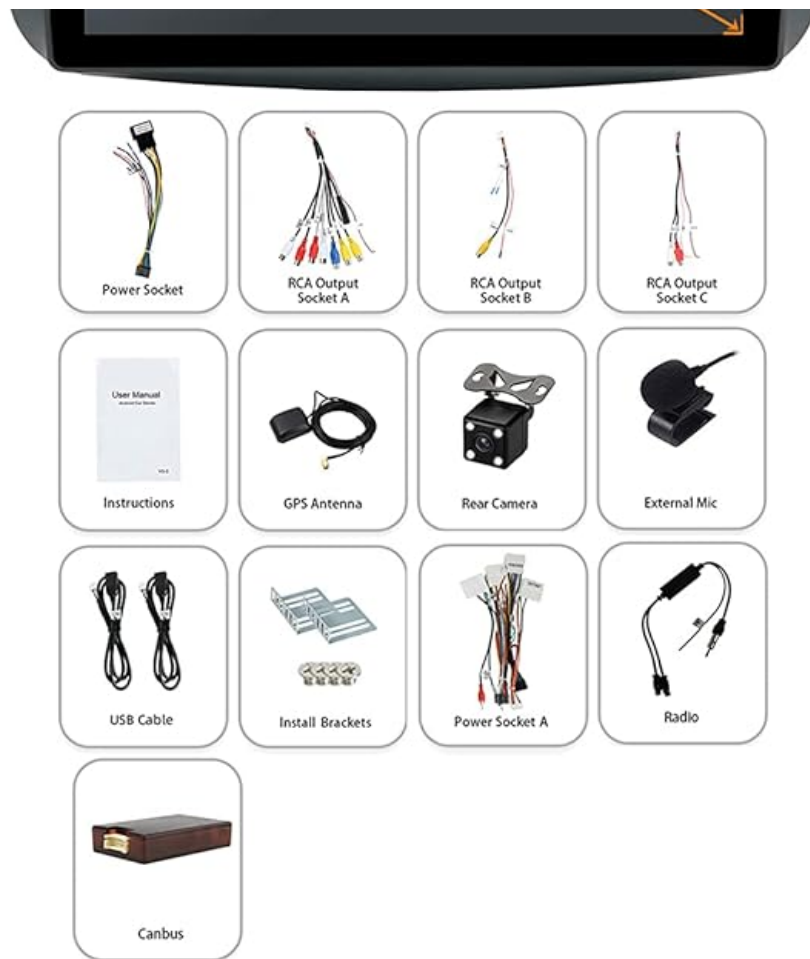


Image 1.2: Diagram showing the 9-inch display dimensions and all included accessories in the package.

2. SETUP AND INSTALLATION

Professional installation is recommended. Ensure the vehicle's ignition is off and the battery is disconnected before beginning installation. This unit is specifically compatible with Mercedes Benz Smart 453 Fortwo models from 2014-2020.

2.1 Pre-Installation Checks

- **Voltage Check:** Confirm your car's electrical system is 12V. Connecting to a voltage over 12V may damage the radio.
- **Power Cables:** Always use the provided power cables. Do not attempt to directly insert original car plugs into this unit, as wiring configurations may differ.

2.2 Wiring Connections

1. **Power Connection:** Connect the red and yellow wires of the provided power harness to the positive side of your vehicle's power supply. Connect the black wire to the negative power supply.
2. **Amplifier Connection (Important for "No Sound" Issue):** If your vehicle has a factory power amplifier (e.g., JBL sound system), and you experience no sound after installation, locate the amplifier's power cable in your vehicle's wiring harness. Connect this amplifier power cable to the 12V ACC cable of the MISONDA unit. This step is crucial for activating the amplifier and enabling audio output.
3. **Reverse Input Cable:** The "reverse" input cable includes two small antennas. These are designed to enhance the radio's Bluetooth and Wi-Fi signals. Ensure they are properly positioned and not obstructed.
4. **GPS Antenna:** Connect the GPS antenna and mount it in a location with a clear view of the sky for optimal signal reception.
5. **Radio Antenna:** Connect the radio antenna for FM/AM reception.
6. **USB Cables:** Connect the provided USB cables for external device connectivity.
7. **Rear View Camera:** Connect the rear view camera as per the wiring diagram.
8. **External Microphone:** Connect the external microphone for improved call quality.

Note: When testing the car radio before full installation, you can temporarily combine the red and yellow wires and connect them to the positive side of a 12V power supply, with the black line connected to the negative. Always replace fuses with the same type and rating if needed.

It is latest android version ,which uses the octa-core arm new generation high-end image 64bit processor.

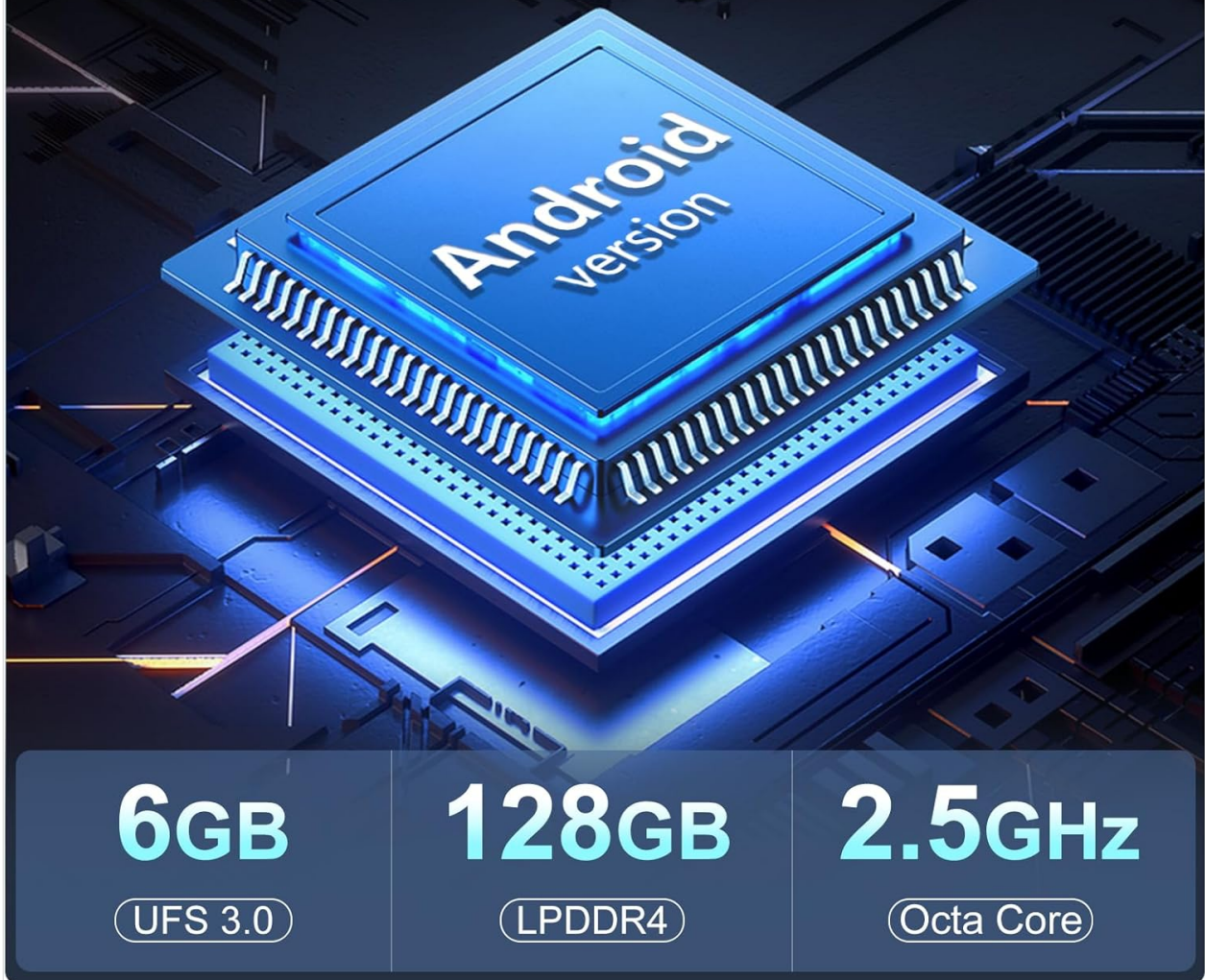


Image 2.1: Internal system architecture of the MISONDA Car Stereo, detailing the Android 14 processor, memory, and storage.

3. OPERATING INSTRUCTIONS

3.1 Basic Operation

- **Power On/Off:** Press and hold the power button on the unit or use the vehicle's ignition.
- **Volume Control:** Adjust volume using the physical buttons on the unit or steering wheel controls.
- **Touchscreen Interface:** Navigate through menus and applications by tapping, swiping, and pinching on the 9-inch IPS display.

3.2 Wireless CarPlay & Android Auto

Connect your smartphone wirelessly via Bluetooth to access CarPlay or Android Auto functionalities. This allows for navigation, calls, messages, and music playback directly through the car stereo interface.

1. Ensure Bluetooth is enabled on your smartphone and the car stereo.
2. Pair your phone with the car stereo via Bluetooth settings.
3. Once paired, select the CarPlay or Android Auto icon on the stereo's home screen.
4. Follow on-screen prompts to complete the connection.

Wireless Carplay Android Auto



Image 3.1: Visual representation of Wireless CarPlay and Android Auto interfaces on the MISONDA Car Stereo.

3.3 GPS Navigation

The unit features built-in GPS navigation. You can use offline maps or connect to Wi-Fi/hotspot for online map services.

- Access the navigation application from the main menu.
- For offline navigation, ensure maps are downloaded.
- For online navigation, connect to a Wi-Fi network or mobile hotspot.

3.4 Bluetooth 5.0

Bluetooth 5.0 supports A2DP for audio streaming, hands-free calling, phone book download, and call records.

1. Go to the Bluetooth settings on the stereo.
2. Enable Bluetooth and search for available devices.
3. Select your phone from the list and pair.
4. Once connected, you can make/receive calls and stream music.

3.5 Radio (FM/AM/RDS)

The unit includes an RDS/FM/AM radio receiver with 18 preset stations.

- Select the Radio application.
- Use automatic or manual search to find stations.
- Save your favorite stations to presets.
- FM Range: 87.5~108MHz.

3.6 DSP Audio Settings

The integrated DSP (Digital Sound Processor) with 64-segment EQ allows for detailed audio parameter adjustments to optimize sound quality for various environments.

- Access the DSP settings from the main menu.
- Adjust the 64-segment equalizer to customize your audio profile.
- The unit supports optical fiber and coaxial digital signal output, as well as 5.1 channels.

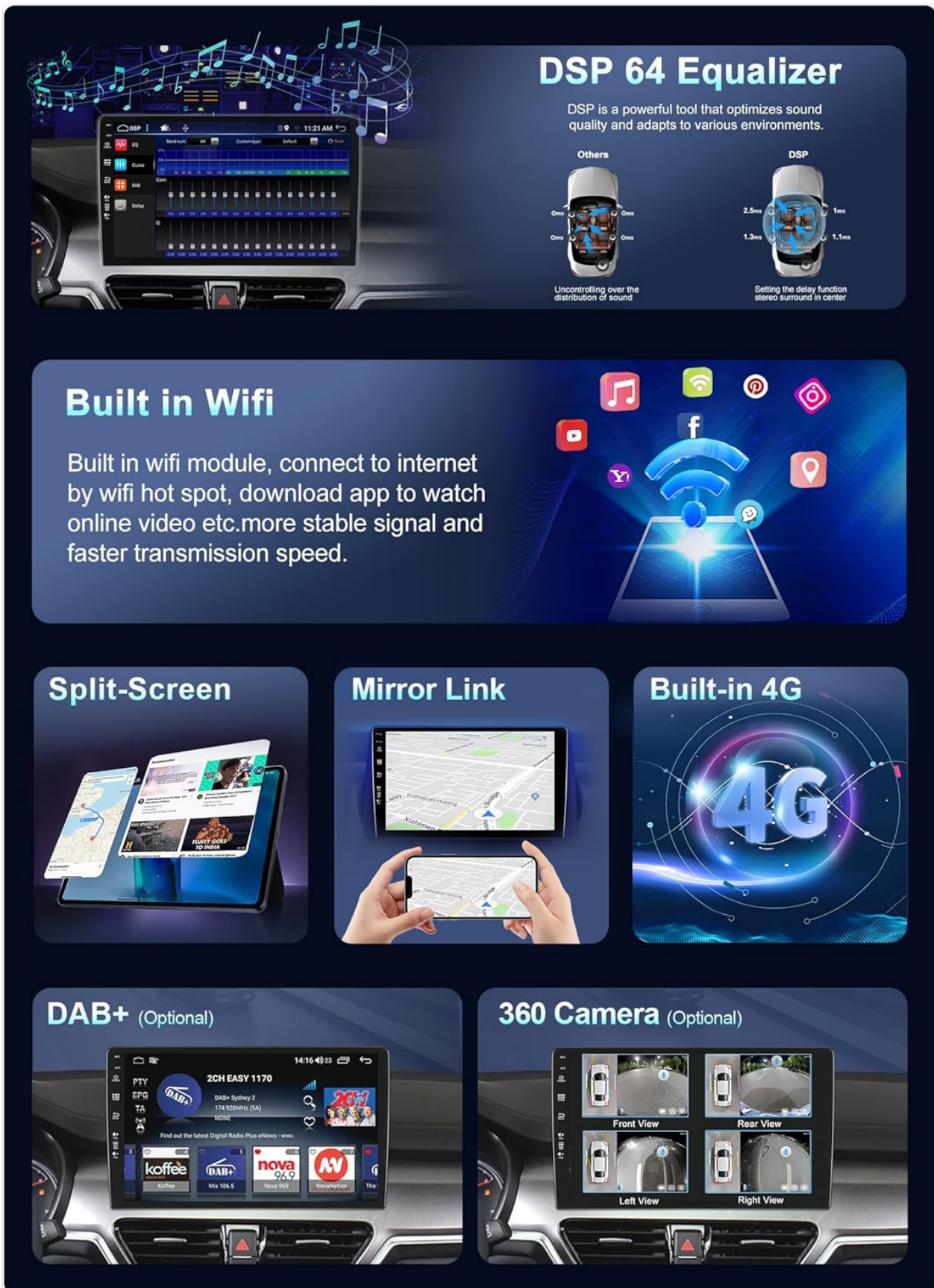


Image 3.2: Overview of advanced features including DSP equalizer, Wi-Fi, Split-Screen, Mirror Link, and optional modules.

3.7 Wi-Fi Connectivity

Connect to a Wi-Fi network or mobile hotspot to access online features, download apps (e.g., YouTube, Spotify), use online navigation, and browse the internet.

1. Go to Settings > Wi-Fi.
2. Select your desired network and enter the password.

3. Once connected, you can use online applications.

3.8 Split Screen Function

The split-screen function allows you to view two applications simultaneously, such as GPS navigation and music playback.

- To activate, open an application, then long-press the recent apps button or drag an app to one side of the screen.
- Select a second application to fill the other half of the screen.

3.9 Mirror Link

Mirror Link allows you to display your smartphone's screen directly onto the car stereo display.

- Access the Mirror Link application on the stereo.
- Follow the on-screen instructions to connect your smartphone.

3.10 Steering Wheel Control (SWC)

The unit supports steering wheel controls, allowing you to manage songs, calls, and volume safely while driving.

- Access the SWC settings in the system menu.
- Follow the instructions to program the buttons on your steering wheel to control the stereo functions.

Bluetooth 5.0



BT Call



BT Music



Phone Book

Built-in bt 5.0, connect to your phone via bt for hands-free answering and making calls, phonebook/bt music play. greatly reduce the risk of driving.

Steering Wheel Control

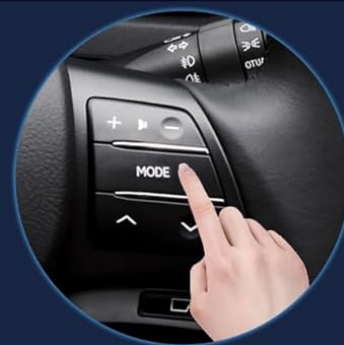


Hang Up



Increase Volume

Support car swc, quickly switch your songs/volumes/calls with your swc function. it will bring more safety to your driving.



GPS Navigation



Navi

Built-in offline map. online map also be supported, after connected to wifi, you can use gps navigation at anywhere.

Image 3.3: Detailed views of Bluetooth 5.0 connectivity, Steering Wheel Control setup, and GPS navigation interface.

3.11 Rear View Camera

The included HD night vision rear view camera provides a 170° ultra-wide viewing angle and IP68 waterproof design. When the vehicle is in reverse gear, the rear environment will automatically display on the large screen, aiding in safer parking.

4. OPTIONAL FEATURES (ADDITIONAL PURCHASE REQUIRED)

The MISONDA Car Stereo supports several optional external modules to expand its functionality. These require separate purchase and installation.

- **4G Module:** Supports external 3G/4G connectivity for enhanced online access. (ASIN: B0D8SXTNKB)

- **DAB+ Module:** Supports external DAB (Digital Audio Broadcasting) for high-quality digital audio broadcasts with a wider range of radio programs and no interference. (ASIN: B0C5X4QKV6)
- **360 Camera System:** Integration with an external 360-degree camera system for a comprehensive view around your vehicle.

5. TROUBLESHOOTING

This section addresses common issues you might encounter. For problems not listed here, please contact customer support.

Issue: No Sound from the Stereo

Possible Cause 1: Vehicle has a factory power amplifier that is not receiving power.

Solution: Locate the power cable for your car's amplifier and connect it to the 12V ACC cable of the MISONDA unit. This is a common requirement for vehicles with premium sound systems (e.g., JBL).

Possible Cause 2: Incorrect wiring or loose connections.

Solution: Double-check all wiring connections, especially the power and speaker wires, ensuring they are secure and correctly matched according to the wiring diagram.

Issue: Unit Does Not Power On

Possible Cause 1: Insufficient or incorrect power supply.

Solution: Verify that the red (ACC) and yellow (B+) power wires are correctly connected to a 12V power source, and the black (Ground) wire is securely connected to a chassis ground. Ensure the vehicle's voltage is 12V; higher voltage can damage the unit.

Possible Cause 2: Blown fuse.

Solution: Check the fuses on the unit's wiring harness and in your vehicle's fuse box. Replace any blown fuses with a fuse of the same type and rating.

Issue: GPS Signal is Weak or Unavailable

Possible Cause: GPS antenna placement or obstruction.

Solution: Ensure the GPS antenna is mounted in a location with a clear, unobstructed view of the sky (e.g., on the dashboard near the windshield). Avoid placing it under metal objects.

Issue: Bluetooth or Wi-Fi Connectivity Problems

Possible Cause: Interference or incorrect settings.

Solution: Ensure the "reverse" input cable's small antennas are properly positioned. Restart the unit and your mobile device. Check Bluetooth/Wi-Fi settings on both devices to ensure they are enabled and discoverable. Try re-pairing devices.

6. SPECIFICATIONS

Feature	Detail
Model Number	BX-5Z11-D04-128G
Operating System	Android 14
Processor	Octa-core A53 2.5GHz (14nm process)
RAM	6GB LPDDR4
Internal Storage	128GB EMMC
GPU	IMG GE8300

Display Size	9 Inches IPS Touchscreen
Resolution	1080 x 680
Bluetooth Version	5.0 (with A2DP/handsfree call)
Radio Chip	TDA 7786 (RDS/FM/AM)
Amplifier IC	7850
DSP Chip	AKM7739 (64 Segment EQ)
Connectivity	Wi-Fi, USB, Auxiliary
Special Features	Wireless CarPlay, Android Auto, GPS Navigation, Split Screen, Mirror Link, Steering Wheel Control
Item Weight	4.51 pounds
Package Dimensions	12.01 x 7.8 x 4.69 inches

7. WARRANTY AND SUPPORT

Your MISONDA Car Stereo Radio comes with a **one-year warranty**. Additionally, a **60-day refund option** is available, and a **replacement or repair option for more than 60 days** MISONDA provides professional technical support for any issues or questions you may have regarding your product.

For technical assistance, warranty claims, or to inquire about optional accessories, please contact MISONDA customer support through your purchase platform or the official MISONDA website.