

Manuals+

[Q & A](#) | [Deep Search](#) | [Upload](#)

Manuals.plus /

› [MAXDONE](#) /

› MAXDONE Trail Camera PH820W-US Instruction Manual

MAXDONE PH820W-US

MAXDONE Trail Camera PH820W-US Instruction Manual

Model: PH820W-US

1. PRODUCT OVERVIEW

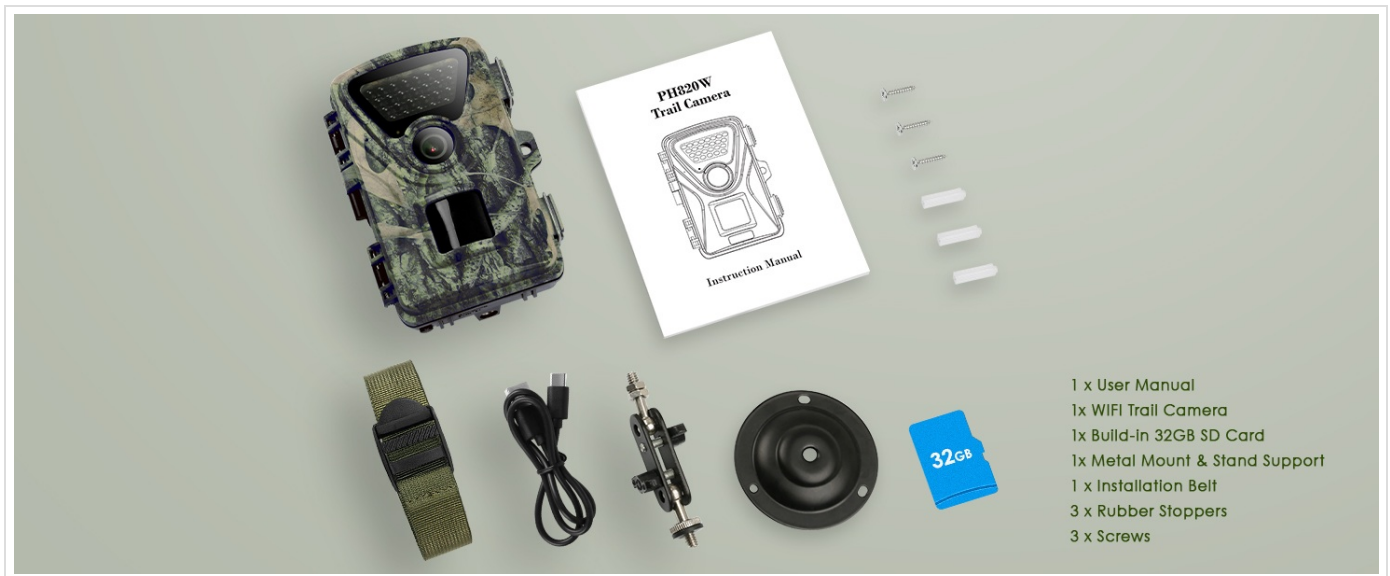
The MAXDONE PH820W-US Trail Camera is a high-performance wildlife camera designed for capturing still images and videos in various outdoor conditions. It features Wi-Fi and Bluetooth connectivity for easy access to media via a dedicated mobile application, enhanced night vision, and a durable waterproof design.



Figure 1: MAXDONE PH820W-US Trail Camera with included 32GB SD card and smartphone app interface.

2. WHAT'S IN THE BOX

- 1 x MAXDONE Trail Camera (PH820W-US)
- 1 x 32GB Micro SD Card
- 1 x USB Cable
- 1 x Mounting Strap
- 1 x Adjustable Mount
- 1 x Instruction Manual



- 1 x User Manual
- 1x WiFi Trail Camera
- 1x Build-in 32GB SD Card
- 1x Metal Mount & Stand Support
- 1 x Installation Belt
- 3 x Rubber Stoppers
- 3 x Screws

Figure 2: Included components of the MAXDONE PH820W-US Trail Camera package.

3. SETUP GUIDE

3.1 Battery and SD Card Installation

The camera operates on 4 or 8 AA 1.5V Alkaline or Lithium batteries (not included). It is recommended to use 8 batteries for extended operation. A 32GB Micro SD card is included and should be inserted into the SD card slot.

1. Open the camera housing latches.
2. Locate the battery compartment and insert 4 or 8 AA batteries, ensuring correct polarity.
3. Insert the 32GB Micro SD card into the designated slot until it clicks into place.
4. Close the camera housing securely, ensuring the latches are fully engaged to maintain IP66 waterproof integrity.



Figure 3: Battery and external power supply options. Note: External power supply may affect IP66 rating.

Video 1: Quick Start Guide for MAXDONE WiFi Camera. This video demonstrates the initial setup, including battery and SD card installation, and basic app connectivity.

3.2 Initial Camera Configuration

After installing batteries and the SD card, turn the camera to "TEST" mode to access the internal menu for configuration.

1. Switch the mode selector from OFF to TEST. The LCD screen will activate.
2. **Format Micro SD Card:** Navigate to MENU → Memory Card Format → YES → OK. This prepares the card for optimal performance.
3. **Set Date & Time:** Navigate to MENU → Date & Time → Set time & date. Adjust year, month, day, hour, minute, and second. Press OK to confirm.
4. **Set Time Format:** Navigate to MENU → Time Format → 24H or 12H → OK.
5. **Set Loop Record:** Navigate to MENU → Loop Record → ON → OK. This setting automatically deletes the earliest pictures when the SD card storage is full, allowing continuous recording.
6. **Choose Language:** Navigate to MENU → Language → Select your desired language (e.g., English) → OK.
7. **Set Password Protection:** Navigate to MENU → Password Protection → ON → Set your desired password → OK. This prevents unauthorized access to your camera's settings and media.
8. **Factory Reset:** If needed, navigate to MENU → Factory Reset → YES → OK to restore default settings.

4. OPERATING INSTRUCTIONS

4.1 Mobile Application (TrailCam GO)

The MAXDONE Trail Camera is compatible with the "TrailCam GO" mobile application, available for both iOS and Android devices. This app allows for remote viewing, control, and media management.

1. **Download the App:** Search for "TrailCam GO" in your device's app store and install it.
2. **Enable Bluetooth and Wi-Fi:** Before using the Wi-Fi function, ensure your phone's Bluetooth and Wi-Fi are turned on and grant necessary access permissions to the app.
3. **Connect to Camera:**
 - Open the TrailCam GO app.
 - Click "+" to add a new device.
 - Select "Wi-Fi Camera".
 - Ensure your camera is in "ON" mode and close to your phone.
 - Click "Connect Camera" when your camera (e.g., PH820WD_6713) is found. The app will connect via Bluetooth first, then Wi-Fi.
 - Once connected, you can enter a location name for your camera (e.g., "Backyard", "Forest").
4. **Remote Control and Media Access:**
 - From the app, you can control the camera to take photos or record videos. These will be directly saved to your mobile phone album.
 - Access the "Gallery" section in the app to view media stored on the camera (Camera tab) or downloaded to your phone (Local tab).
 - Click on a picture to download it, or click on a video to play it and save it to your phone album.
5. **Camera Location Mapping:** Use the "MAP" function in the app to mark the physical location of your camera. Note: The camera does not have GPS, so real-time tracking is not available.

WiFi & Bluetooth

Connect to WiFi and Bluetooth functions through APP and view real-time photos and videos



WiFi



Bluetooth



Notice:

The WiFi connection range is within 45 ft (approximately 14 meters) and is clear of obstructions such as walls and glass doors.

Figure 4: Wi-Fi and Bluetooth connectivity for remote viewing and control via the TrailCam GO app. Note the 50-foot connection range.

Video 2: Detailed guide on using the MAXDONE WiFi Trail Camera app, covering connection, settings, and media management.

4.2 Camera Settings via App

Adjust various camera parameters directly from the TrailCam GO app's settings menu.

- **Work Mode:**
 - **Motion Detection:** Camera records when motion is detected.
 - **Detection Interval:** Set the delay between detections (5 seconds to 60 minutes optional duration).
- **Photo or Video:**
 - **Photo Settings:**
 - **Quality:** Up to 32MP (e.g., 2MP, 4MP, 8MP, 16MP, 20MP, 24MP, 32MP).

- **Photo Burst:** 1P-5P (number of photos per trigger).
- **Video Settings:**
 - **Quality:** Up to 1440P (e.g., 720P, 1080P, 2.7K).
 - **Video Length:** 5-59 seconds and 1-10 minutes.
 - **Audio Recording:** Enable/Disable.
- **Motion Detection:**
 - **Detection Sensitivity:** Low, Middle, High.
 - **Motion Filter:** ON/OFF. When ON, you can define a specific detection zone to monitor, ignoring movement outside this area.
- **Device Language:** Change the camera's display language.

32MP HD Photo Resolution

Provide clearer and more realistic images to show you the amazing animal world

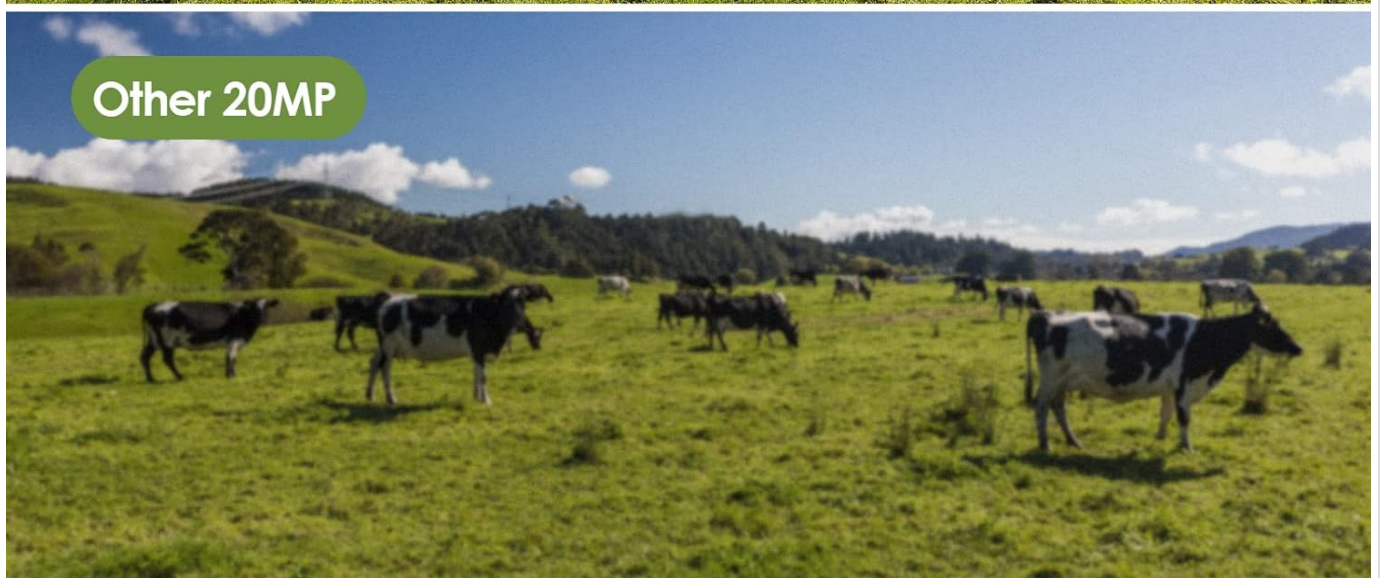


Figure 5: The camera's 32MP HD photo resolution provides clearer and more realistic images.

1440P Sharper Video Resolution

Provides crisp image clarity and video with audio



Figure 6: The camera's 1440P video resolution offers crisp image clarity and video with audio.



Eight (8) 1.5V AA Alkaline or Lithium batteries.

6V, 1.5 - 2 A DC with a 3.5 x 1.35mm coax DC power plug

6V, 1.5 - 2 A Solar Charging Panel

Package does not contain power supply. DC power plug and solar charging board will affect IP66 waterproof performance

Figure 7: Smart Motion Filter Function helps reduce false triggering by allowing definition of a specific detection area.

4.3 Night Vision and Trigger Speed

The camera features enhanced 940nm no-glow infrared technology for stealthy night vision up to 65 feet (20 meters). It also boasts an ultra-fast 0.2-second trigger speed to capture fleeting moments.



Excellent Night Shooting Capabilities

26pcs 940nm infrared LEDs support ultra clear night vision

- 
65ft (20M)
IR Flash
- 
940 nm
No-Emitting LED
- 
0.2s Trigger
Speed

Figure 8: Excellent Night Shooting Capabilities with 940nm no-glow infrared LEDs.

Ultra Fast 0.2s Trigger Speed

Don't miss any exciting moment, 100° Wide Angle Detection Area

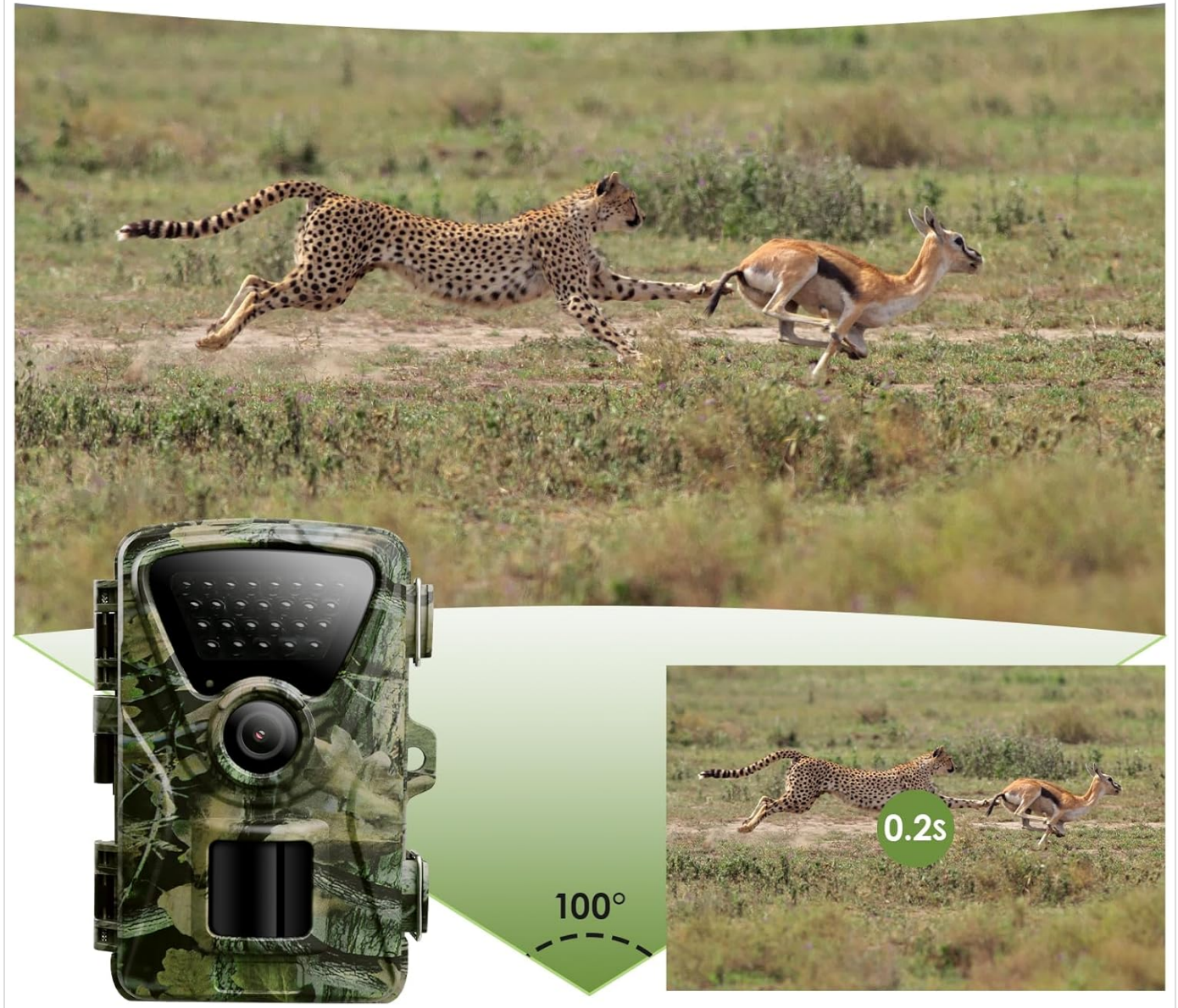


Figure 9: Ultra-fast 0.2-second trigger speed and 100° wide-angle detection area.

5. MAINTENANCE

The MAXDONE Trail Camera is designed for durability in outdoor environments.

- **IP66 Waterproof:** The camera features an IP66 waterproof and dust-proof design, making it resistant to rain, snow, and dust. Ensure the housing latches are always securely closed.
- **Cleaning:** Use a soft, dry cloth to clean the lens and PIR sensor. Avoid abrasive materials or harsh chemicals.
- **Battery Care:** Replace batteries when low to ensure continuous operation. If storing the camera for an extended period, remove all batteries.
- **SD Card Management:** Regularly transfer media from the SD card to a computer or external storage to prevent it from filling up and to ensure data backup. Format the SD card periodically for optimal performance.

IP66 Waterproof Performance

The one-piece design ensures better water and dust resistance.



Rainproof



Snowproof



Dustproof



Figure 10: IP66 Waterproof Performance ensures reliability in various weather conditions.

6. TROUBLESHOOTING

If you encounter issues with your MAXDONE Trail Camera, refer to the following common solutions:

Problem	Possible Cause & Solution
Camera not powering on.	Check battery installation: Ensure correct polarity and that batteries are fully charged or new. Verify battery type: Use 1.5V Alkaline or Lithium AA batteries. Check mode switch: Ensure it's set to "TEST" or "ON".

Problem	Possible Cause & Solution
Wi-Fi/Bluetooth connection issues.	<p>Range: The Wi-Fi and Bluetooth connection range is approximately 50 feet (15 meters) and can be affected by obstructions. Move closer to the camera.</p> <p>App Permissions: Ensure the TrailCam GO app has necessary Bluetooth and Wi-Fi permissions on your phone.</p> <p>Camera Mode: Ensure the camera is in "ON" mode for app connection.</p> <p>Restart: Try restarting both the camera and your phone.</p>
Poor image/video quality.	<p>Lens Cleanliness: Clean the camera lens with a soft cloth.</p> <p>Settings: Verify photo quality (32MP) and video resolution (1440P) settings in the app.</p> <p>Lighting: Ensure adequate lighting for daytime shots. For night vision, ensure no obstructions for the IR LEDs.</p>
Motion detection not working or false triggers.	<p>PIR Sensor Obstruction: Ensure the PIR sensor is not blocked.</p> <p>Sensitivity: Adjust "Detection Sensitivity" (Low, Middle, High) in the app settings.</p> <p>Detection Zone: Utilize the "Motion Filter" and "Detection Zone" features in the app to define specific areas for monitoring and reduce unwanted triggers from moving branches or small animals.</p> <p>Object Movement: The object must pass through the motion detector's field of view to be photographed.</p>
SD card errors or not saving media.	<p>Format Card: Format the Micro SD card via the camera's menu or app.</p> <p>Card Compatibility: Ensure the SD card is a compatible type and class (e.g., Class 10 or higher).</p> <p>Card Full: Check if the SD card is full. Enable "Loop Record" or transfer/delete old media.</p>

7. SPECIFICATIONS

Feature	Specification
Brand	MAXDONE
Model Name	PH820W-US
Still Image Resolution	Up to 32MP
Video Resolution	1440P @ 30fps (H.264, MP4 format)
Connectivity	Wi-Fi, Bluetooth
Night Vision Range	Up to 65 feet (20 meters) with 940nm no-glow IR LEDs
Trigger Speed	0.2 seconds
Viewing Angle	100 Degrees
Waterproof Rating	IP66
Power Source	4 or 8 x 1.5V AA Alkaline/Lithium batteries (not included), or 6V DC external power
Storage	Micro SD Card (up to 32GB included)

Feature	Specification
Dimensions (L x W x H)	4.72 x 2.76 x 1.57 inches
Item Weight	1.23 pounds

8. WARRANTY AND SUPPORT

For warranty information, technical support, or service inquiries, please refer to the contact details provided in the product packaging or visit the official MAXDONE website. Keep your purchase receipt for warranty claims.