

PEMP X1

PEMP 10.25-inch Linux Screen User Manual for BMW X1 F48 NBT (2016-2017)

Model: X1 | Brand: PEMP

1. INTRODUCTION

This manual provides comprehensive instructions for the installation, operation, and maintenance of your PEMP 10.25-inch Linux Screen for BMW X1 F48 NBT models produced between 2016 and 2017. This device supports Wireless CarPlay, Android Auto, and calls via the original Bluetooth microphone, enhancing your vehicle's multimedia capabilities.

2. SETUP AND INSTALLATION

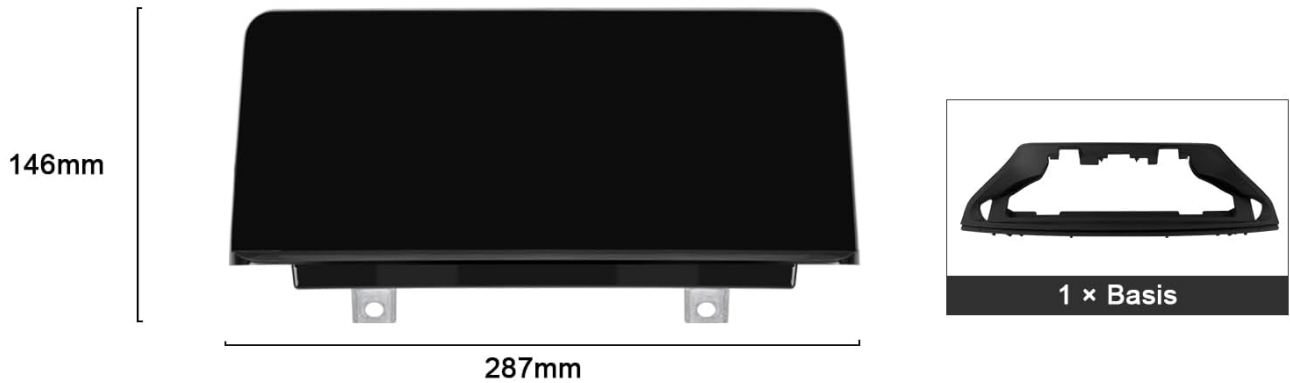
2.1 Package Contents

Verify that all components are present in your package:

- 10.25-inch Linux Screen
- ISO Wiring Harness
- USB Cable
- Audio Cable
- Installation Manual
- Mounting Bracket

DIMENSIONS AND ACCESSORIES

DIMENSIONS



ACCESSORIES



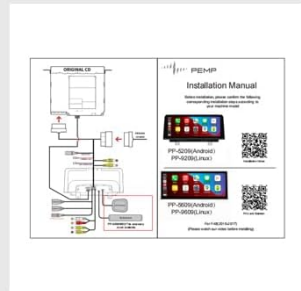
1 x ISO Wiring Harness



1 x USB Cable



1 x Audio Cable



1 x Installation Manual

Image: Contents of the PEMP 10.25-inch Linux Screen package, showing the screen, ISO wiring harness, USB cable, audio cable, and installation manual.

2.2 Compatibility Check

This unit is compatible with BMW X1 F48 NBT models produced between 2016 and 2017. Ensure your vehicle's original system matches the NBT UI for proper functionality.

Please confirm whether the product is applicable according to the following features

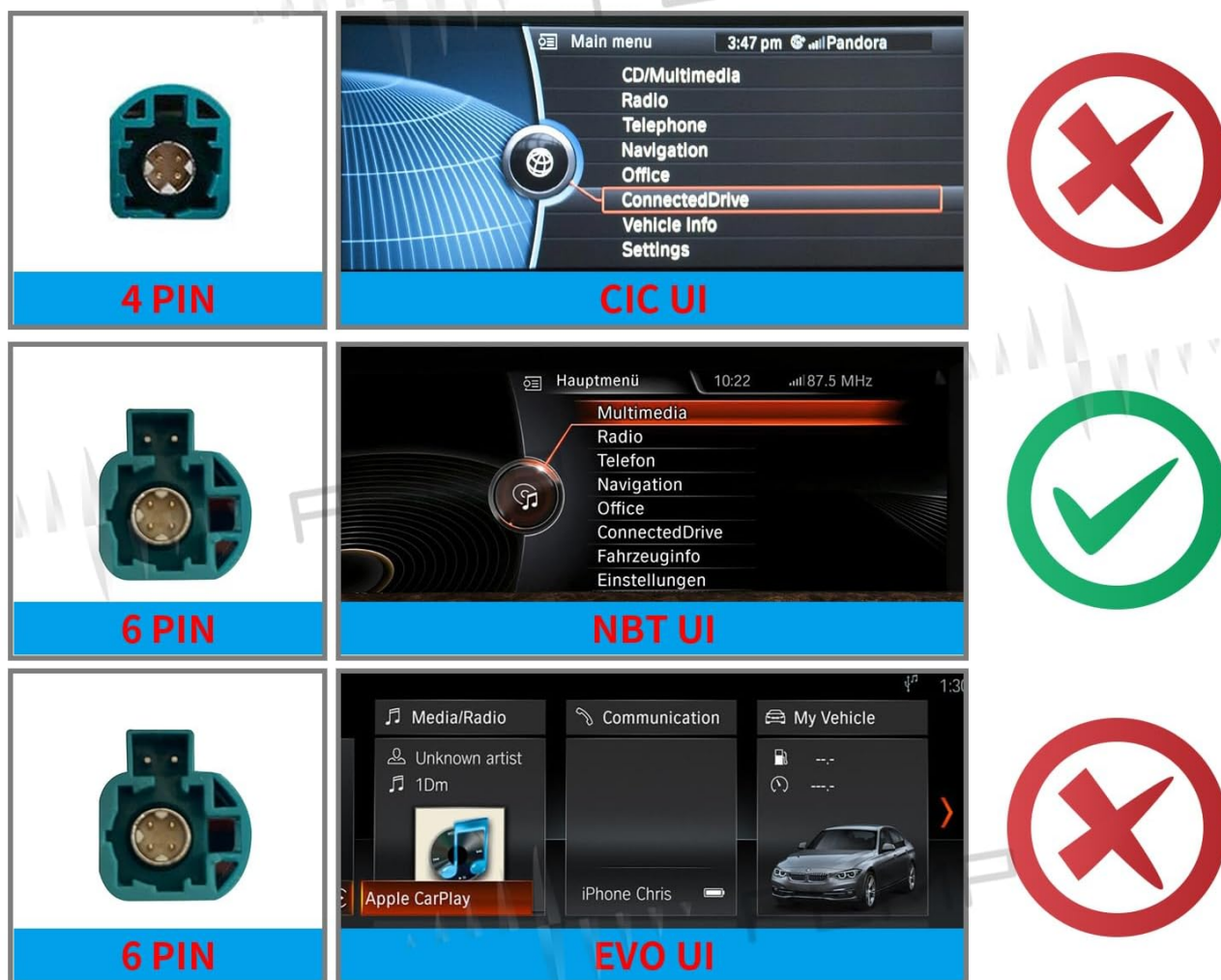


Image: A compatibility chart illustrating that the NBT UI is the correct interface for this product. Other interfaces like CIC UI (4PIN) and EVO UI are not compatible.

2.3 Installation Steps

Follow these steps carefully for proper installation. It is recommended to consult a professional if you are unsure about any part of the process.

1. Remove Air Conditioning Vents and Control Panel:

Carefully pry and remove the air conditioning decorative panel. Disconnect any wiring harnesses attached to the panel. Then, remove the air conditioning control panel and disconnect its wiring harness.

Your browser does not support the video tag.

Video: Installation guide for Autoabc Touchscreen Multimedia Radio for BMW, demonstrating removal of air conditioning vents and control panel.

2. Remove Original Radio and Screen:

Unscrew the fixing screws securing the original radio unit and carefully pull it out. Disconnect the power cable from the back of the radio. Then, unscrew the fixing screws for the original display screen and disconnect its LVDS cable.

Your browser does not support the video tag.

Video: Installation guide for Autoabc Touchscreen Multimedia Radio for BMW, demonstrating removal of the original radio and screen.

3. **Connect New Wiring Harness:**

Connect the new power cable to the original power cable. Route the power cable and USB cable inside the vehicle's structure to ensure a tidy installation. Connect the LVDS adapter module to the new screen.

Your browser does not support the video tag.

Video: Installation guide for Wireless CarPlay for BMW X1 Series, showing wiring connections.

4. **Fiber Optic Cable Transfer:**

If your original car has a fiber optic cable, you must transfer it to the power cable of the new product. This is crucial for sound functionality.



Image: Instructions for transferring the 2-pin green optical fiber cable from the original CD unit to the new Linux harness.

Your browser does not support the video tag.

Video: Demonstration of transferring fiber optic cables to resolve no sound issues.

5. **DIP Switch Settings:**

Set the DIP switches on the Can Bus Decoder according to your screen size. For a 10.25-inch screen, set DIP switch 1 to ON, and the rest to OFF.



Image: DIP switch settings for the Can Bus Decoder, indicating the correct configuration for a 10.25-inch screen.

6. **Install New Screen:**

Connect the cables to the new screen. Align the clips on the back of the new screen with the mounting bracket and press gently to secure it in place. Reinstall the air conditioning control panel and decorative trim.

Your browser does not support the video tag.

Video: Installation guide for Wireless CarPlay for BMW X1 Series, showing connection of cables and screen installation.

3. OPERATING INSTRUCTIONS

3.1 Basic Functions

- **OEM Info Display:** Long press the Menu button to switch between the factory OEM interface and the CarPlay/Android Auto interface.
- **Control:** Supports the car's original knob control and capacitive touch function for CarPlay/Android Auto. Steering wheel buttons can also be used for calls.
- **USB Media:** Supports playing music and video via USB.

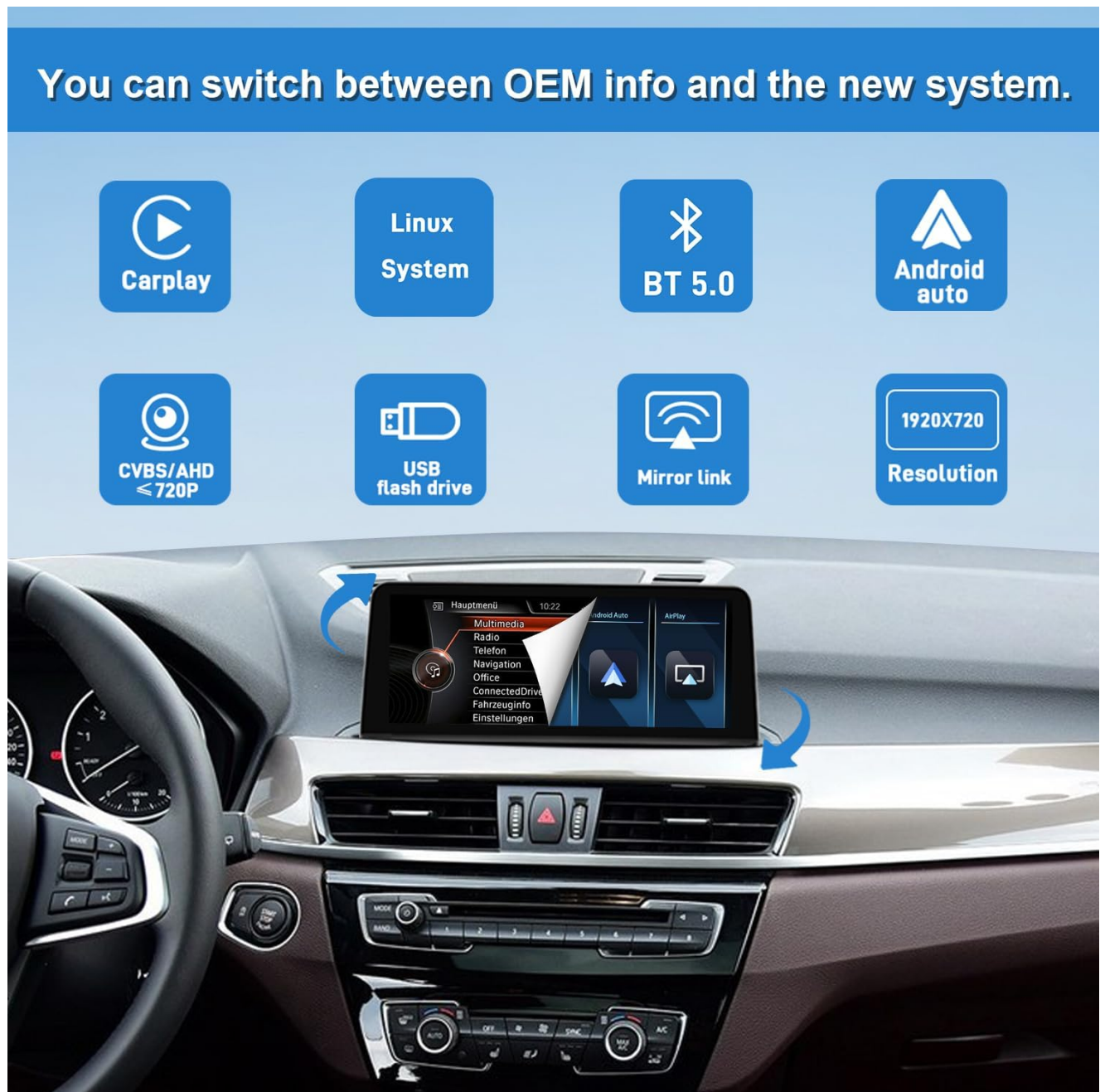


Image: Overview of the PEMP 10.25-inch Linux Screen features, including OEM info switching and various connectivity options.

3.2 Wireless CarPlay & Android Auto

The unit supports both wireless and wired CarPlay and Android Auto. No additional adapters are needed.

Built-in Carplay and Android Auto

Supports wireless/wired apple carplay and Android Auto, No need to purchase additional Carplay/Android Auto Adapter



Image: Visual representation of Wireless CarPlay and Android Auto interfaces on the PEMP 10.25-inch Linux Screen.

Your browser does not support the video tag.

Video: Instructions on how to connect Apple CarPlay to the system.

Your browser does not support the video tag.

Video: Instructions on how to connect Android Auto to the system.

3.3 Bluetooth Calls

The system supports simultaneous use of OEM Bluetooth for calls, ensuring excellent call sound quality. You can answer CarPlay or Android Auto phone calls using the steering wheel buttons.

Your browser does not support the video tag.

Video: Demonstration of how to use the OEM Bluetooth for calls in CarPlay.

3.4 Camera Support

Supports the car's original reversing camera and radar information display. Also supports aftermarket 720P

AHD/CVBS format cameras. Aftermarket cameras exceeding 720P AHD format are not supported.

Support for OEM and aftermarket front and rear view cameras

You can select the camera option in the settings the after-market camera only support CVBS or 720P AHD format



Image: Illustration of the system's support for both OEM and aftermarket cameras, including settings for camera type and format.

4. MAINTENANCE

To ensure the longevity and optimal performance of your PEMP Linux Screen, follow these maintenance guidelines:

- **Cleaning:** Use a soft, lint-free cloth to clean the screen. Avoid abrasive materials or harsh chemicals that could damage the display.
- **Temperature:** Avoid exposing the device to extreme temperatures, both hot and cold, as this can affect performance and lifespan.
- **Liquid Exposure:** Prevent any liquids from entering the device. In case of accidental spills, power off the unit immediately and allow it to dry completely before use.

5. TROUBLESHOOTING

This section addresses common issues you might encounter with your PEMP Linux Screen.

5.1 No Sound from OEM Car Info or CarPlay/Android Auto

If you experience no sound, follow these steps:

1. **Check OEM Radio Sound:** Press the FM/AM button to confirm if the OEM radio has sound.
 - If the OEM radio has sound, you need to set the resolution. Navigate to **Setup > Car Settings > Original Car's Screen Resolution** and select the correct item.
 - If there is no sound from the OEM radio, you will need to reconnect the socket on the back of the OEM radio. Refer to the fiber optic cable transfer instructions in the Setup section.

Your browser does not support the video tag.

Video: Guide on how to fix the no sound issue, including checking OEM radio and fiber optic cable connections.

2. AUX Switching Settings:

- **Automatic:** Go to **Car Settings > Setup** and find "Automatically switch to AUX". Choose "Harman Head Unit" or "Alpine Head Unit" according to your car.
- **Manual:** Go to **Main menu > Multimedia > External devices** Long press the number key "8" until you hear a tone ringing.



Image: Instructions for configuring automatic and manual AUX switching for audio output.

5.2 OEM Resolution Issues

If the OEM display is not showing correctly, you may need to adjust the resolution settings.

1. **Adjust Resolution:** Navigate to **Setup > Car Settings > Original Car's Screen Resolution** and select the appropriate resolution for your original display.

Your browser does not support the video tag.

Video: Guide on how to resolve OEM resolution issues by adjusting settings.

6. SPECIFICATIONS

Feature	Detail
Display Size	10.25 inches
Resolution	1920 x 720 HD
Operating System	Linux
Connectivity	Wireless CarPlay, Android Auto, Bluetooth, USB
Special Features	Built-In Bluetooth, Touchscreen, OEM Knob Control, Steering Wheel Button Support, OEM Info Display
Camera Support	OEM Reversing Camera, Aftermarket 720P AHD/CVBS
Dimensions	16.85 x 9.09 x 5.98 inches (Package)
Item Weight	4.84 pounds
Color	Black

7. WARRANTY AND SUPPORT

For warranty information or technical support, please refer to the contact details provided with your purchase or visit the official PEMP website. Our customer service team is available to assist with any questions or issues you may encounter.