

[Manuals.plus](#) /

› [FREEFISH](#) /

› Alarm Clock with Wireless Charging Station User Manual

FREEFISH S09-BLACK-US-Y

FREEFISH S09-BLACK-US-Y Alarm Clock with Wireless Charging Station User Manual

Model: S09-BLACK-US-Y | Brand: FREEFISH

INTRODUCTION

The FREEFISH S09-BLACK-US-Y is an all-in-one solution designed to simplify your bedside experience. This multifunctional device integrates a dual alarm clock, Bluetooth speaker, FM radio, dimmable night light, and a wireless charging station for your smartphone, smartwatch, and wireless earbuds. It aims to reduce cable clutter and save space, offering both functionality and an aesthetic design for your bedroom or nightstand.



Figure 1: The FREEFISH S09-BLACK-US-Y Alarm Clock with Wireless Charging Station.

6 IN 1 Multi-Functional Wireless Charging Station

 3 in 1 Wireless Charging

 Bluetooth TimeSync

 Alarm Clock

 3-Speed Night Light



Figure 2: Overview of the 6-in-1 multi-functional features including 3-in-1 wireless charging, Bluetooth TimeSync, alarm clock, and 3-speed night light.

PACKAGE CONTENTS

Before you begin, please ensure all items are present in the package:

- 1 x Wireless Charging Station (6-in-1 unit)
- 1 x 18W Power Adapter
- 1 x 3.3ft Type-C Cable
- 1 x User Manual

3-Speed Adjustable Bright Design

Both the display brightness and night light brightness can be adjusted



Fully Off • Trace • Medium • Super Bright (Cycle)



Figure 3: All components included in the product package.

SETUP GUIDE

Follow these steps to set up your FREEFISH S09-BLACK-US-Y:

- 1. Connect Power:** Insert the Type-C cable into the charging station's power input port. Connect the other end of the cable to the provided 18W power adapter, then plug the adapter into a standard wall outlet. The device will power on and the digital clock display will illuminate.
- 2. Initial Clock Setting:** Upon first power-on, the clock may display a default time. Refer to the "Setting the Clock" section under Operating Instructions to set the correct time.
- 3. Positioning:** Place the charging station on a flat, stable surface such as a nightstand or desk. Ensure there is adequate space around the device for proper heat dissipation.

Surprisingly HD Sound

Dual speaker provides immersive sound with rich bass



Figure 4: Illustration of connecting the power adapter and placing devices for charging.

OPERATING INSTRUCTIONS

Clock and Alarm Functions

The digital alarm clock features clear visibility and a smart chip with a built-in battery for memory function, retaining settings during power outages.

- **Time Display:** Choose between 12-hour (AM/PM) or 24-hour modes.
- **Dual Alarms:** Set two independent alarms.
- **Snooze Function:** Each alarm allows for an extra 5 minutes of slumber, limited to three snoozes per alarm.

Setting the Clock

Detailed instructions for setting the time will be found in the included user manual. Generally, look for dedicated "Time Set" or "Clock" buttons on the device.

Setting Alarms

To set Alarm 1 or Alarm 2, press the corresponding alarm button. Use the adjustment buttons (often labeled +/- or arrows) to set the desired alarm time. Confirm your selection. When an alarm sounds, press the "Snooze" button for a temporary pause, or any other button to turn off the alarm.

0-16 Levels Volume Control **Digital Alarm Clock**

Dual Alarm Clock • Big Snooze • 12/24Hour Mode



1 7:00 First Alarm



2 9:00 Second Alarm



Adjust the volume of the alarm clock —→ when the alarm clock ringing, short press [- ☀] or [+ 🔔] to adjust volume from 0 to 16 level

Figure 5: Controls for setting dual alarms and using the snooze function.

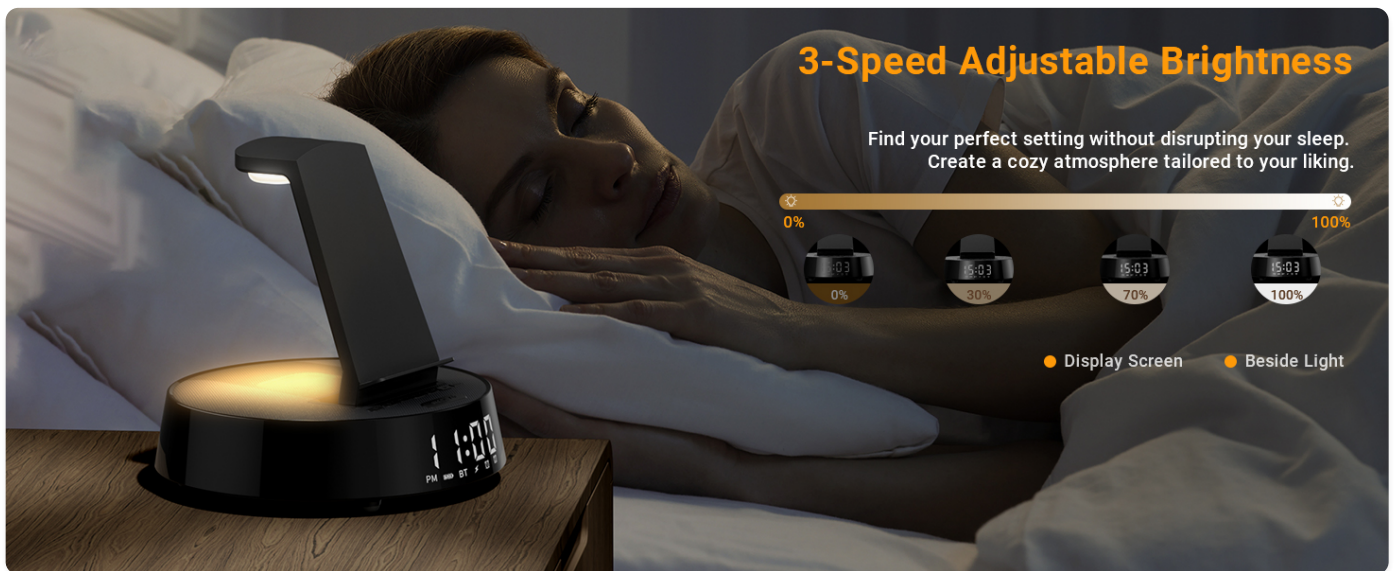


Figure 6: Visual representation of setting and using the two alarm clock settings.

Wireless Charging Station

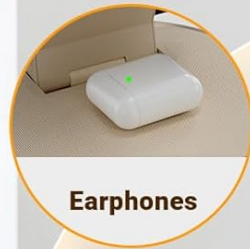
The integrated wireless charging station supports simultaneous charging of a smartphone, Apple Watch, and AirPods. It is designed for universal compatibility with Qi standard wireless charging devices.

- **Smartphone Charging:** Compatible with iPhone 8-16 Series (and any series after iPhone 8), Samsung Galaxy F05/M05/A06/Z Fold6/S24/S23/S22 Ultra/C55/M55/A55/A35, Google Pixel 9/8 Pro/7/6a, and other Qi-enabled phones. Place your phone vertically on the charging stand.
- **Apple Watch Charging:** Compatible with Apple Watch 10/9/8/7/6/5/4/3/2/SE/Ultra. Place your Apple Watch on the designated magnetic charging area.
- **Earbuds Charging:** Compatible with AirPods 3/Pro. Place your earbuds case on the flat charging pad.
- **Case Friendly:** Supports phone cases up to 3mm thick (non-metal cases).

15W Fast

Wireless Charging Station

Universal Compatibility with the Qi standard wireless charging devices



How to charging

Step 1: Plug in an external charger (USB with an adapter)

Step 2: Close to the charging Area (Gapless)

Figure 7: Dedicated charging areas for smartphone, Apple Watch, and wireless earbuds.

Top Grade & Exquisitely Made Gifts



Figure 8: Chart detailing wide compatibility with iPhone, Google, Samsung phones, Apple Watch, and AirPods.

Phone Battery Safety/Overcharge Protection/ Temperature Protection/Foreign Object Detection



Figure 9: Illustration of the fast heat dissipation and safety features for phone battery protection.

Bluetooth Speaker Function

The built-in Bluetooth speaker delivers immersive sound with rich bass, enhancing your audio experience.

1. **Pairing:** Turn on the device. Activate Bluetooth on your smartphone or other audio device. Search for "FREEFISH S09" (or similar name indicated on the device/manual) in your device's Bluetooth settings and select to pair.
2. **Playback:** Once paired, audio from your device will play through the speaker. Adjust volume using the controls on the charging station or your connected device.



Figure 10: The device functioning as a superior Bluetooth speaker.

FM Radio Operation

Enjoy your favorite radio stations with the integrated FM radio.

1. **Switch to FM Mode:** Press the "Mode" button (or similar) to cycle through available modes until "FM" is displayed.
2. **Scan Stations:** Use the "Scan" or "Tune" buttons to automatically search for and save available FM stations.
3. **Select Station:** Use the navigation buttons to select a saved station or manually tune to a frequency.
4. **Volume Control:** Adjust the volume from 0 to 16 levels using the dedicated volume buttons.



Figure 11: A user enjoying the FM radio mode with adjustable volume levels.

Dimmable Night Light

The night light offers adjustable brightness levels to create a soothing ambiance without disrupting your sleep.

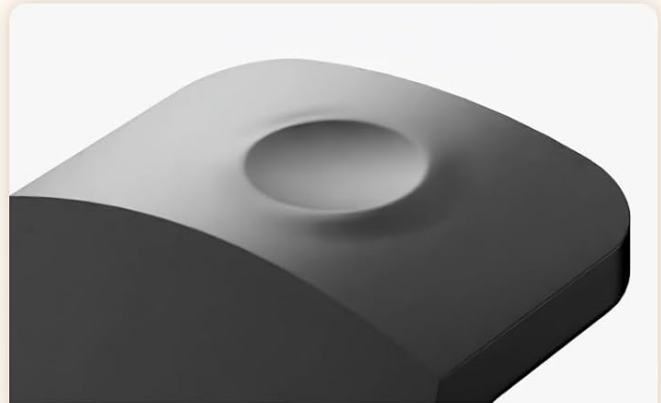
- **Brightness Levels:** Customize the night light brightness from 0% (off), 30%, 70%, to 100%.
- **Adjustment:** Use the dedicated night light button or controls to cycle through the brightness settings.

High-Quality Detailed Design

Extreme luxury quality control provides a more upscale and humanized experience



Fast Heat Dissipation



Fabric Material (Magnetic design)



Silicone Base (Anti-Slip)



90° Portable Design (Foldable)

Figure 12: Visual guide to adjusting the night light brightness from off to super bright.

Two Alarm Clock Settings

Experience tailored wake-up routines for a more personalized and efficient start to your day



Big Snooze Function extra 5 mins

Figure 13: A user adjusting the 3-speed brightness of the night light for a cozy atmosphere.

MAINTENANCE

To ensure the longevity and optimal performance of your FREEFISH S09-BLACK-US-Y, follow these simple maintenance guidelines:

- **Cleaning:** Use a soft, dry, lint-free cloth to wipe the surface of the device. Do not use abrasive cleaners, waxes, or solvents as they may damage the finish.
- **Avoid Liquids:** Keep the device away from water and other liquids. If liquid spills on the device, immediately unplug it and allow it to dry completely before reconnecting power.
- **Ventilation:** Ensure the heat dissipation holes on the back of the charging station are not obstructed to prevent overheating.
- **Storage:** When not in use for extended periods, store the device in a cool, dry place away from direct sunlight and extreme temperatures.

TROUBLESHOOTING

If you encounter any issues with your FREEFISH S09-BLACK-US-Y, please refer to the following common problems and solutions:

Problem	Possible Cause	Solution
Device not powering on.	Power cable not connected properly; power outlet issue.	Ensure the Type-C cable is securely connected to both the device and the 18W adapter. Try plugging the adapter into a different working power outlet.
Wireless charging is slow or intermittent.	Phone case too thick or metallic; device not properly aligned; insufficient power from adapter.	Remove phone case or use a non-metal case 3mm thick. Ensure your device is centered on the charging area. Verify you are using the provided 18W adapter. If issues persist, consider using a higher wattage (e.g., 25W or 45W) quality adapter. Disconnect and reconnect the power cable to reset the charging function.

Problem	Possible Cause	Solution
Bluetooth speaker not connecting.	Device not in pairing mode; Bluetooth off on source device; already connected to another device.	Ensure the charging station is in Bluetooth mode. Turn Bluetooth off and on again on your source device. Forget the device in your source device's Bluetooth settings and try pairing again.
Alarm not sounding or too quiet.	Alarm volume set too low; alarm not activated.	Check the alarm volume settings (0-16 levels). Ensure the alarm is set and activated for the correct time.

If the problem persists after trying these solutions, please contact customer support.

SPECIFICATIONS

Feature	Detail
Product Dimensions	7 x 1.5 x 7 inches
Item Weight	2.53 pounds
Model Number	S09-BLACK-US-Y
Color	Black
Connectivity Technology	USB
Connector Type	USB Type C
Special Features	Wireless Charging, Bluetooth Speaker, FM Radio, Dimmable Night Light, Dual Alarm Clock
Compatible Devices	Headphones (AirPods), Cellular Phones (iPhone, Google, Samsung), Smartwatches (Apple Watch)
Input Voltage	120 Volts
Manufacturer	FREEFISH
Country of Origin	China

WARRANTY AND SUPPORT

FREEFISH is committed to providing high-quality products and excellent customer service.

- **Warranty:** This product comes with a one-year quality warranty from the date of purchase. Please retain your proof of purchase for warranty claims.
- **Customer Support:** For any questions, concerns, or technical assistance, please contact FREEFISH customer service. We aim to provide the best solution within 24 hours.
- **Contact Information:** Refer to the contact details provided in the product packaging or on the official FREEFISH website for the most up-to-date support channels.

