

[Manuals.plus](#) /

› [YITAHOME](#) /

› YITAHOME 260 Gallon Double-Wall Deck Box Instruction Manual

## YITAHOME MAYIHqvDfy

# YITAHOME 260 Gallon Double-Wall Deck Box Instruction Manual

Model: MAYIHqvDfy

Brand: YITAHOME

## INTRODUCTION

This manual provides detailed instructions for the assembly, operation, and maintenance of your YITAHOME 260 Gallon Double-Wall Deck Box. Please read thoroughly before use to ensure safe and proper handling.



A large black resin deck box with its lid open, revealing ample storage space filled with patio cushions and blankets. The double-wall construction is visible.

## KEY FEATURES

- **Double-Layer Structure:** Our all-weather resin deck box stands out with a double-layer structure and enhanced with internal reinforced steel beams, providing durability and resilience for outdoor use.
- **Versatile Design:** The large deck box features a built-in divider and two matching slots for classified storage; Upgraded gas strut design ensures smooth operation, while convenient side handles make movement easy; A lockable lid offers secure storage.
- **High Load Capacity:** Use this outdoor storage box as additional seating for outdoor gatherings, capable of bearing up to 1000 pounds without deformation or damage.
- **Large 260-Gallon Capacity:** The patio storage box measures 69.69"L x 32.28"W x 32.68", spacious enough to store various items such as cushions, tools, supplies.
- **Easy Setup:** Approximately 30 minutes are needed to assemble the lockable storage box; Ensure all components are properly secured or tightened to maintain waterproofing and structural integrity.

# REMOVABLE DIVIDER



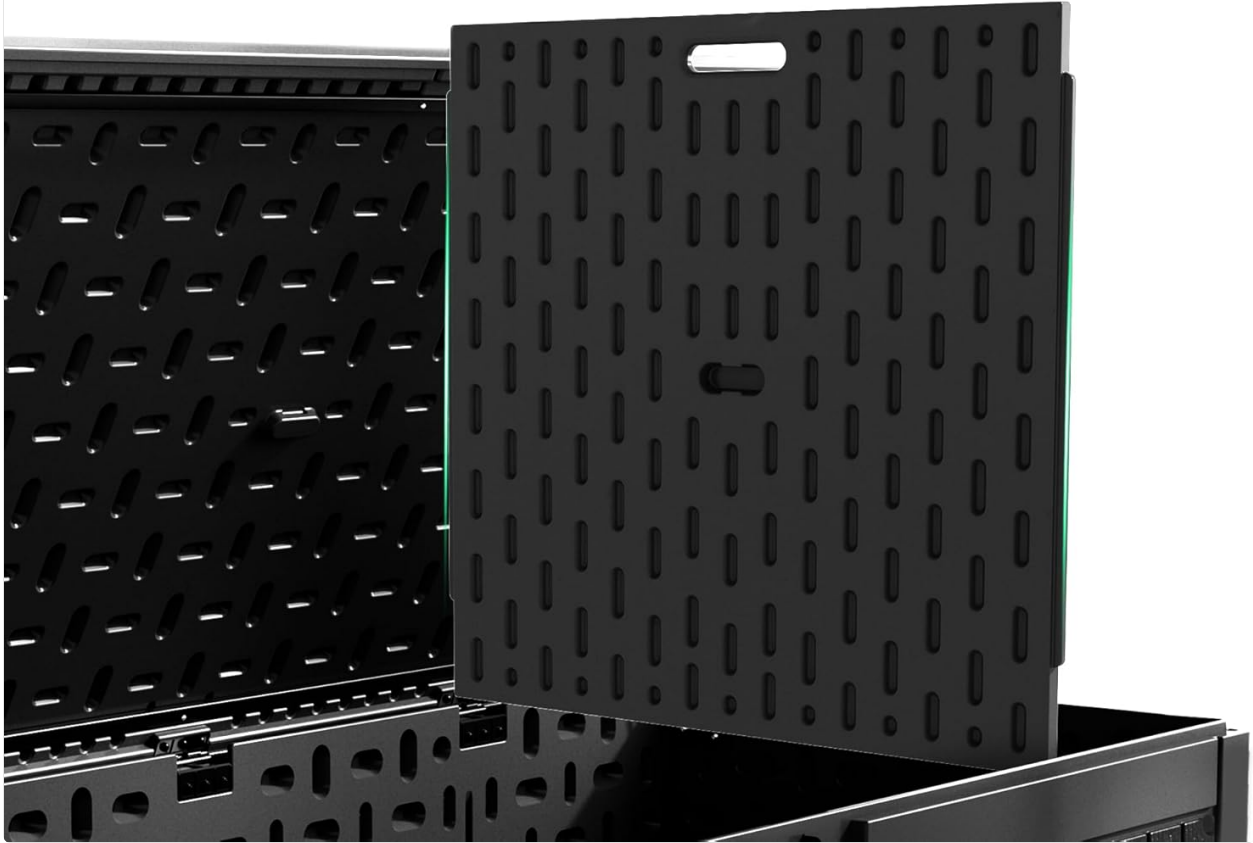
Removable Design



Dual Slots



Separate Partition



An internal view of the deck box highlighting its double-wall structure, advanced blow-forming technique, and overall rugged and durable construction.



A close-up image illustrating the removable divider inside the deck box, emphasizing its flexible design with dual slots for separate partitioning.



Detailed views of the deck box's hydraulic strut for smooth lid operation, the integrated lockable lid feature, and the convenient built-in side handles for easy portability.

## SETUP AND ASSEMBLY

The YITAHOME 260 Gallon Deck Box is designed for straightforward assembly, typically taking around 30 minutes. Ensure all components are properly secured for optimal performance and water resistance.

### Assembly Steps Overview

1. Unpack all components and verify against the parts list.
2. Assemble the side panels and base, ensuring secure connections.
3. Attach the lid and install the hydraulic struts for smooth opening and closing.
4. Insert the removable divider as needed for organized storage.
5. Ensure all connections are tight to maintain the water-resistant seal.

### Installation Guide Video

An official YITAHOME video demonstrating the step-by-step assembly process for the 260 Gallon Large Deck Box, including panel assembly, hinge installation, and divider placement.

## OPERATION

Your deck box is designed for versatile use, offering ample storage and serving as additional seating.

### Opening and Closing the Lid

The lid is equipped with upgraded gas struts for smooth and controlled opening and closing. Gently lift the lid to open; it will hold itself open. To close, gently pull down the lid until it latches securely.

### Using the Divider

The built-in divider can be used to organize items within the storage box. It can be placed in two different slots to create customized compartments.

### Seating Functionality

The robust construction allows the deck box to bear up to 1000 pounds, making it suitable for use as additional outdoor seating.



Spacious Storage Space  
**260 Gallon**



Weight Capacity  
**1000 LBS**



A black deck box serving as an outdoor table or bench, with two individuals comfortably seated beside it, highlighting its high load capacity of 1000 lbs.

## CARE AND MAINTENANCE

To ensure the longevity and appearance of your YITAHOME deck box, follow these simple maintenance guidelines:

- **Cleaning:** Wipe down the exterior with a damp cloth and mild soap. Avoid abrasive cleaners or harsh chemicals that could damage the resin material.
- **Water Resistance:** Periodically check the lid and panel connections to ensure they remain tight and maintain the water-resistant seal.
- **Winter Care:** While designed for all-weather use, clearing heavy snow accumulation from the lid can help preserve its structural integrity over time.

## TROUBLESHOOTING

### Common Issues and Solutions

Problem	Possible Cause	Solution
Water inside the box	Loose panel connections or lid not fully closed.	Ensure all panels are securely snapped together and the lid is firmly latched. Check for any debris obstructing the lid's seal.
Lid not opening/closing smoothly	Obstruction or issue with gas struts.	Check for items blocking the lid's path. Inspect gas struts for damage or misalignment.
Difficulty during assembly	Panels not aligning correctly.	Ensure panels are oriented correctly. Apply firm, even pressure to snap components into place. A rubber mallet may be used gently if needed.

## PRODUCT SPECIFICATIONS

Attribute	Detail
Brand	YITAHOME
Color	Black
Material	Resin
Special Feature	Weathertight
Style	260 Gallon
Recommended Uses For Product	storage
Product Dimensions	69.69"L x 32.28"W x 32.68"H

Attribute	Detail
Capacity	260 Gallons
Closure Type	Latch
Water Resistance Level	Water Resistant
Opening Mechanism	Hinge
Shape	Rectangular
Pattern	Solid
Number of Items	1
Storage Volume	260 Gallons
Number of Compartments	1
Unit Count	1.0 Count
Item Package Quantity	1
Maximum Weight Recommendation	1000 Pounds
UPC	197839809543
Item Weight	105.8 pounds
Manufacturer	YITAHOME
ASIN	B0CWTRSC5X
Item model number	MAYIHqvDfy
Included Components	260 Gallon Deck Box with Divider



A visual representation of the YITAHOME 260 Gallon Deck Box, detailing its length (69.69 inches), width (32.28 inches), and height (32.68 inches), along with its 260-gallon storage capacity and 1000 lbs weight capacity.

## WARRANTY AND SUPPORT

YITAHOME products typically come with a manufacturer's warranty. For specific warranty details, claims, or technical support, please refer to the warranty card included with your product or visit the official YITAHOME website. For customer support, you may also refer to the contact information provided at the point of purchase.

## About YITAHOME

- **How did we get our start?** As a furniture expert, YITAHOME offers a full line of luxurious, avant-garde style furniture that creates a retreat where your senses will embrace tranquility.
- **What makes our products unique?** Good furniture tells the story. Every detail of our pieces is meticulously pondered over, easy to match, and complementary with other furniture in most scenarios.
- **Why do we love what we do?** We're setting the bar to elevate the use of your space to the next level. Discover perfect options for every style, so you can invigorate your living space into an elegant oasis.

