

Zhenx S0503B000

Zhenx S0503B000 Bathroom Fan Motor Assembly Instruction Manual

Model: S0503B000 | Brand: Zhenx

1. PRODUCT OVERVIEW

This manual provides instructions for the installation, operation, and maintenance of the Zhenx S0503B000 Bathroom Fan Motor Assembly. This unit is designed to replace existing fan motor assemblies in compatible bathroom ventilation systems.



Image 1.1: Zhenx S0503B000 Bathroom Fan Motor Assembly, showing the motor, fan blade, and mounting bracket.

Key Features:

- **Effective Ventilation:** Designed to remove stale air, moisture, and odors from bathrooms.
- **Compatibility:** Direct replacement for specific NuTone models.
- **Components:** Includes motor, fan blade, and bracket for a complete assembly.

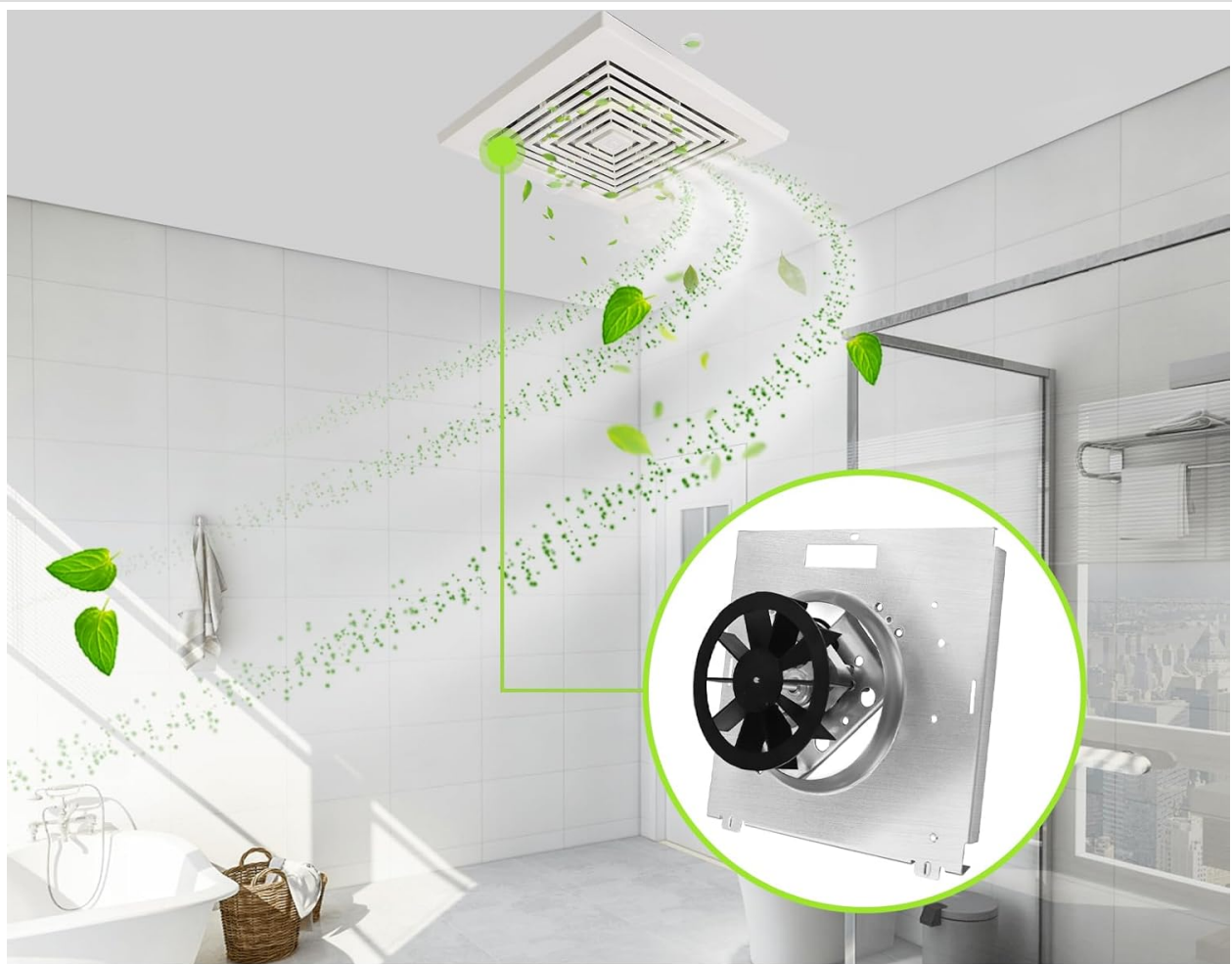
2. COMPATIBILITY

The Zhenx S0503B000 Bathroom Fan Motor Assembly is compatible with the following models:

- NuTone 763RL B Unit
- NuTone 763RLN B Unit
- NuTone 763RL
- NuTone 763RLN

- NuTone 763RLL
- NuTone 763RLNB
- NuTone 763RLN-R01

It is also compatible with NuTone 769RF and 769RL B Unit (70 CFM) models.



Replace Part Number:
763RLN, 763RL, 763RLNB, 763RLN-R01.
Compatible with Broan NuTone.

Image 2.1: Visual representation of compatible NuTone model numbers for the replacement fan motor assembly.

Important: Always verify the model number of your existing unit against the compatible models listed before purchasing and installing.

3. PACKAGE CONTENTS

The Zhenx S0503B000 Bathroom Fan Motor Assembly kit includes the following components:

- 1 x Fan Motor
- 1 x Fan Blade

- 1 x Mounting Bracket



Image 3.1: Detailed view of the motor, blade, and bracket included in the S0503B000 assembly kit.

4. SPECIFICATIONS

Model Number	S0503B000
Brand	Zhenx
Product Dimensions	9.3"L x 8.9"W x 3.3"H (23.6cm L x 22.6cm W x 8.4cm H)
Voltage	120 Volts
Wattage	30 watts
Amperage	0.85A

Frequency	60HZ
Air Flow Capacity	60 Cubic Feet Per Minute (CFM)
Noise Level	2 Sones
Material	Metal, Plastic
Power Connector Type	2-Pin



Image 4.1: Product size diagram illustrating the 9-inch by 9-inch dimensions of the assembly.

5. INSTALLATION INSTRUCTIONS

Safety First: Before beginning any installation, ensure the power supply to the bathroom fan circuit is turned OFF at the circuit breaker to prevent electrical shock.

Steps for Replacement:

1. **Remove Grille Cover:** Carefully pull down the existing fan grille cover. Locate and disengage any clips or screws holding it in place.
2. **Disconnect Old Assembly:** Once the grille is removed, locate the old fan motor assembly. Disconnect the power plug from the receptacle inside the fan housing.
3. **Remove Old Assembly:** Unfasten any screws or clips securing the old motor assembly to the fan housing. Carefully remove the old unit.
4. **Install New Assembly:** Insert the new Zhenx S0503B000 motor assembly into the fan housing. Ensure it is properly seated and aligned. Secure it with the appropriate screws or clips.
5. **Connect Power:** Plug the 2-pin power connector of the new assembly into the receptacle inside the fan housing. Ensure the connection is firm. If the plug wire is twisted, gently straighten it outwards before connecting.
6. **Install Grille Cover:** Reattach the fan grille cover, ensuring it is securely clipped or screwed into place.

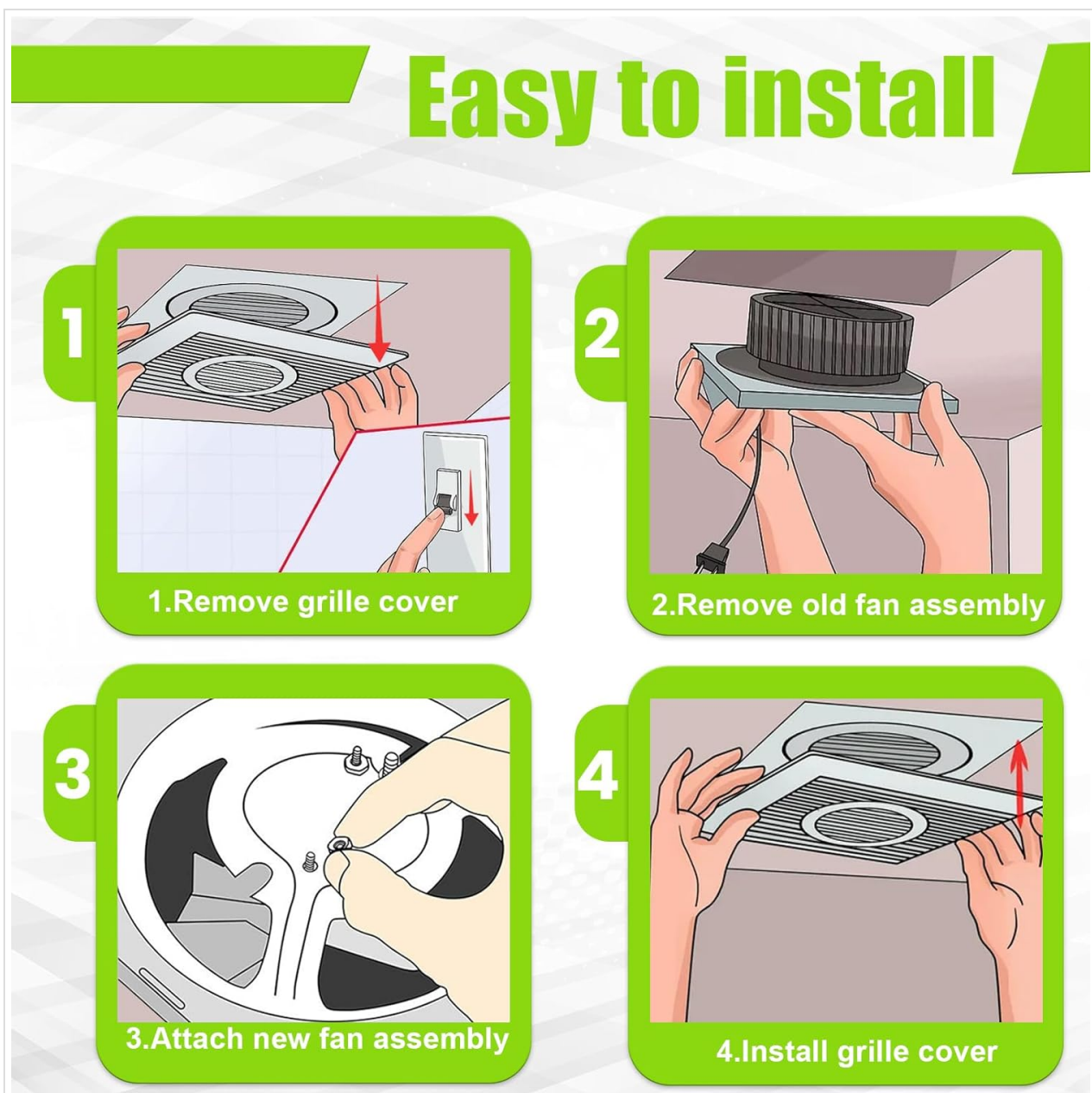


Image 5.1: Step-by-step visual guide for replacing the fan motor assembly.

Note: Installation typically takes approximately five minutes. Ensure the assembly is firmly installed to

minimize operational noise.

6. OPERATION

Once installed, the Zhenx S0503B000 Bathroom Fan Motor Assembly operates in conjunction with your existing bathroom fan switch. When the switch is activated, the fan will turn on, drawing air from the bathroom and expelling it through the ventilation system.

The fan's function is to circulate indoor air, remove moisture, and reduce odors, contributing to a drier and fresher bathroom environment.

7. MAINTENANCE

Regular maintenance helps ensure the longevity and efficient operation of your bathroom fan motor assembly:

- **Clean Air Blades:** Periodically clean the fan blades to prevent dust and debris buildup, which can reduce airflow and increase noise. Ensure power is off before cleaning.
- **Check Power Supply:** Regularly inspect the power connection for any signs of wear or damage.
- **Lubrication:** For optimal performance, add lubricant to the interior of the exhaust fan motor as recommended by general fan maintenance guidelines. Consult a professional if unsure about lubrication points or type of lubricant.

8. TROUBLESHOOTING

If you encounter issues with your Zhenx S0503B000 Bathroom Fan Motor Assembly, consider the following:

- **Fan Does Not Fit / Misalignment:**
If the assembly does not fit the advertised models, or if the fan wheel or shaft length causes rubbing, carefully re-verify the model number of your existing unit against the compatibility list. Ensure all dimensions match before purchase. If issues persist after careful verification and installation, contact customer support.
- **Increased Noise During Operation:**
Ensure the assembly is firmly installed and all screws/clips are tightened. Check for any obstructions around the fan blade. Clean the fan blades if they are dirty. If the noise is due to the shaft rubbing, re-check installation alignment.
- **Bent Frame or Damaged Components:**
Inspect the product upon arrival for any physical damage. If the frame is bent or components are damaged, do not attempt installation. Contact the seller immediately for a replacement.
- **Fan Not Turning On:**
Ensure the power supply to the fan circuit is on at the breaker. Check that the 2-pin power connector is securely plugged into the receptacle.

9. WARRANTY INFORMATION

Specific warranty details for the Zhenx S0503B000 Bathroom Fan Motor Assembly are not provided in this manual. Please refer to the product packaging, any included warranty cards, or contact the manufacturer directly for warranty terms and conditions.

10. CUSTOMER SUPPORT

For further assistance, technical support, or inquiries regarding your Zhenx S0503B000 Bathroom Fan Motor Assembly, please contact the manufacturer or your point of purchase. Have your model number (S0503B000) and purchase information ready when contacting support.