

AOLON Aolon Curve 121

AOLON Curve Smart Watch User Manual

Model: Aolon Curve 121

Your guide to setup, operation, and maintenance.

1. INTRODUCTION

Thank you for choosing the AOLON Curve Smart Watch. This device is designed to enhance your daily life with advanced fitness tracking, communication features, and health monitoring. This manual provides detailed instructions to help you set up, operate, and maintain your smartwatch for optimal performance. Please read this manual thoroughly before using your device.

2. WHAT'S IN THE BOX

Upon opening your package, please ensure all the following items are present:

- Aolon Curve Smart Watch (1 unit)
- Charging cable (1 unit)
- Instruction manual (1 unit)

Size and Package Contents

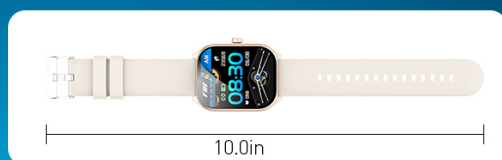


Image: Contents of the Aolon Curve Smart Watch package, including the watch, charging cable, and user manual.

3. PRODUCT OVERVIEW

The AOLON Curve Smart Watch features a 2.01-inch HD display with a 3D flexible surface, designed for comfort and style. The watch body is crafted with a sleek, curved aesthetic, and the model shown in the images is Rose Gold with a beige silicone strap.



Image: Front view of the AOLON Curve Smart Watch, showcasing its 2.01-inch display.



Image: Side view of the watch, highlighting the crown button for navigation.



Image: Rear view of the watch, detailing the health sensors and charging points.



Image: The smartwatch comfortably worn on a user's wrist.

4. SETUP

4.1 Charging the Device

Before initial use, fully charge your AOLON Curve Smart Watch. Connect the provided charging cable to the magnetic charging contacts on the back of the watch and to a USB power source. A full charge typically takes 2.5 to 3 hours. A fully charged watch provides 3-6 days of normal usage, or 4-5 hours of continuous Bluetooth calls.

4.2 App Installation

To unlock the full potential of your smartwatch, download and install the **"Da Fit"** application on your smartphone. The app is compatible with Android 6.0 or iOS 9.0 and above.

- Scan the QR code provided in the watch's quick start guide or search for "Da Fit" in your device's app store (Apple App Store for iOS, Google Play Store for Android).
- Follow the on-screen instructions to install the app.

4.3 Device Pairing

After installing the "Da Fit" app, follow these steps to pair your smartwatch with your smartphone:

1. Ensure your smartphone's Bluetooth is turned on.
2. Open the "Da Fit" app on your smartphone.
3. Navigate to the "Add Device" section within the app.
4. The app will search for nearby devices. Select "Aolon Curve" from the list to connect.
5. Confirm the pairing request on both your watch and smartphone if prompted.

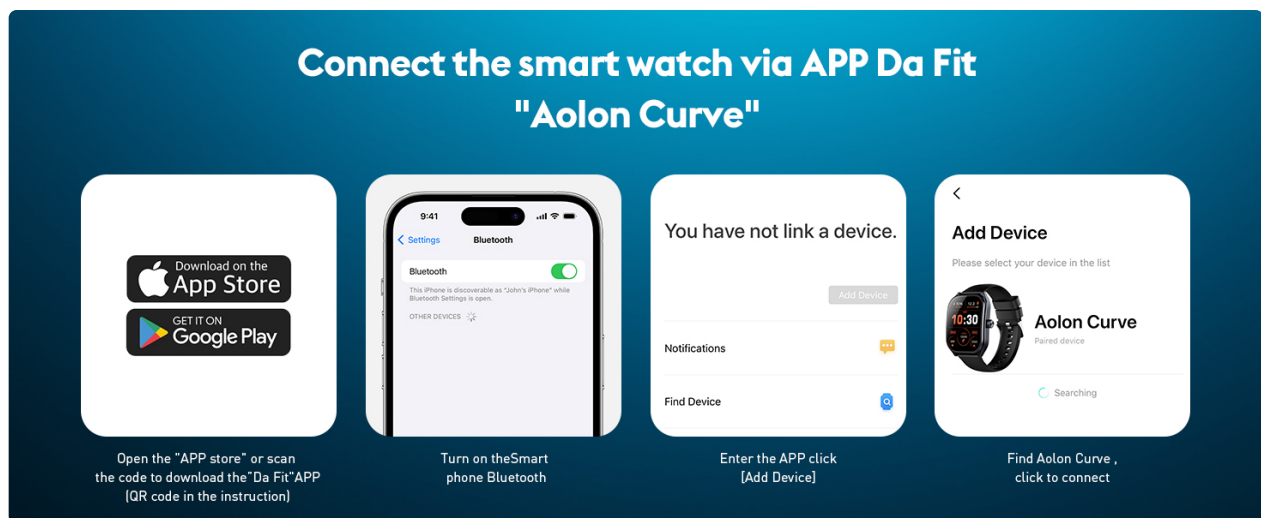


Image: Step-by-step guide for connecting the smartwatch to the Da Fit application.

5. OPERATING INSTRUCTIONS

5.1 Basic Navigation

- **Touchscreen:** Swipe left/right, up/down to navigate through menus and features. Tap to select.
- **Crown Button:** Press to return to the home screen or wake the display. Rotate (if applicable) to scroll through lists.

5.2 Making and Receiving Calls

With advanced Bluetooth V5.3+EDR technology, your smartwatch allows you to manage calls directly from

your wrist:

- **Answering Calls:** When a call comes in, tap the green phone icon on the watch screen.
- **Rejecting Calls:** Tap the red phone icon to decline an incoming call.
- **Making Calls:** Access the dial pad or contact list through the watch's menu to initiate a call.
- **Viewing Missed Calls:** Check the call log on your watch for missed calls.

5.3 Notifications

Receive notifications from popular social media platforms (e.g., Facebook, WhatsApp, Instagram, Twitter) and other apps directly on your watch. Ensure notification permissions are enabled in the "Da Fit" app and your phone settings.



Image: The smartwatch displaying message and social media notifications.

5.4 Changing Watch Faces

Customize your watch's appearance with multiple dial options. You can switch between classic, electronic, simple, and sporty styles directly from the watch or through the "Da Fit" app. The app also allows you to personalize the watch face with your favorite photos.



Image: A selection of customizable watch faces available through the Da Fit app.

5.5 Activity Tracking and Sports Modes

The watch supports over 120 sports modes, including running, walking, hiking, badminton, basketball, boating, climbing, cycling, fitness training, football, swimming, and yoga. It meticulously tracks exercise data to help you

manage your personal exercise regimen.

- Access sports modes from the main menu.
- Select your desired activity to start tracking.
- View real-time data such as distance, steps, and calories burned.



Image: The smartwatch tracking activity during exercise, displaying real-time data.

5.6 Health Monitoring

The smartwatch features advanced sensors for comprehensive health monitoring:

- **Heart Rate Monitoring:** 24-hour heart rate monitoring with real-time updates uploaded to the app.
- **Blood Oxygen (SpO2) Monitoring:** Real-time detection of blood oxygen levels.
- **Blood Pressure Monitoring:** Track your blood pressure data anytime.
- **Sleep Tracking:** Monitors sleep patterns, including REM, light, and deep sleep stages, for optimal rest analysis.

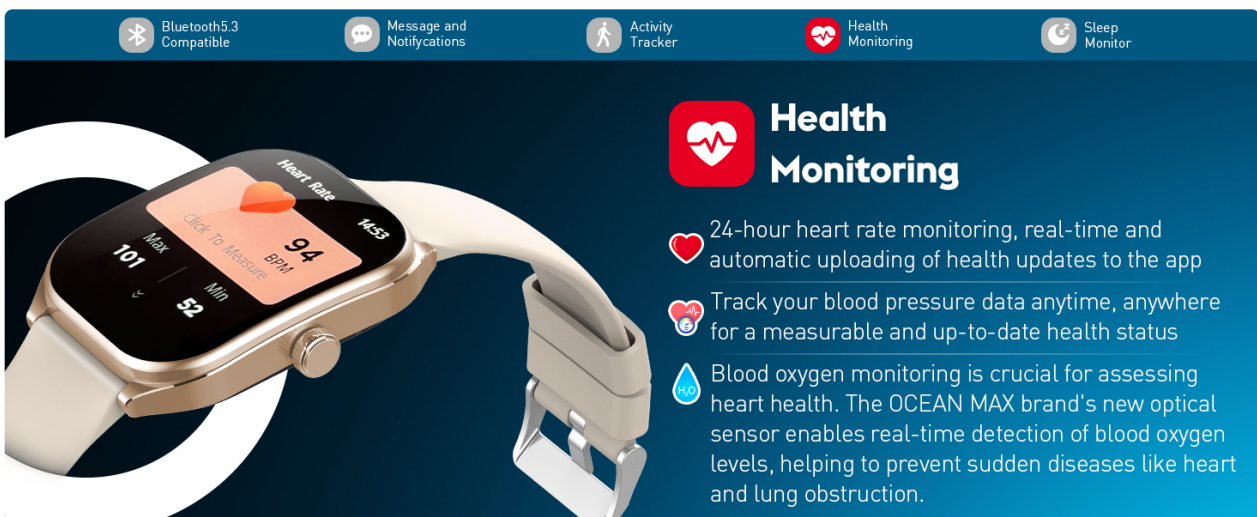


Image: The smartwatch displaying heart rate data, illustrating its health monitoring capabilities.

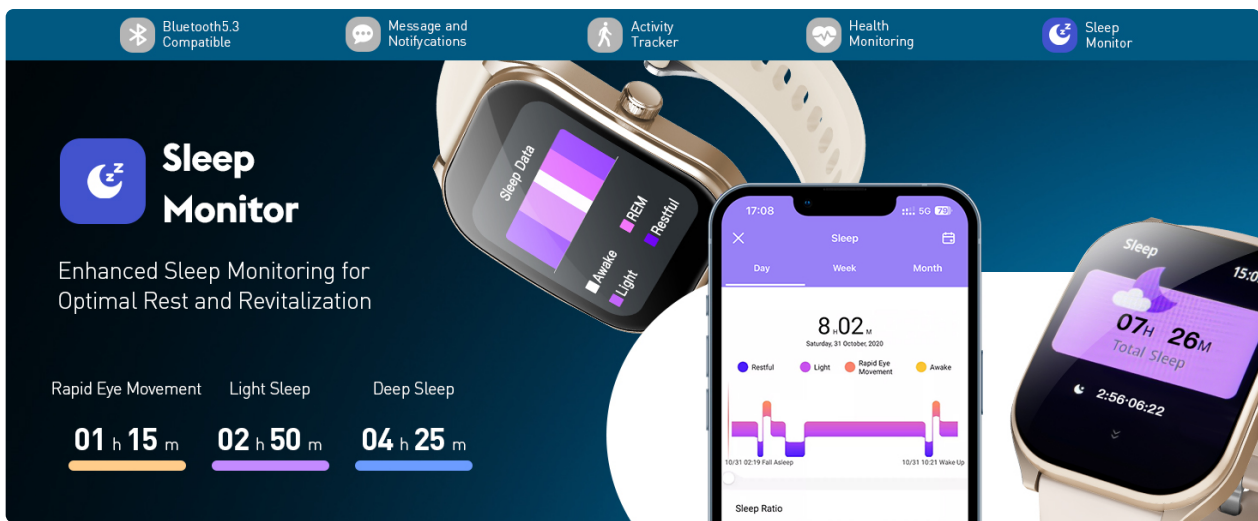


Image: The smartwatch and app interface showing detailed sleep monitoring data.

6. FEATURES

- **2.01" HD Curved Display:** A large, vibrant screen with a seamless 3D flexible surface for an immersive visual experience.
- **Bluetooth Call Functionality:** Answer, make, and reject calls directly from your wrist, compatible with Android 6.0+ and iOS 9.0+ devices using Bluetooth V5.3+EDR.
- **120+ Sport Modes:** Comprehensive tracking for a wide range of physical activities, providing accurate data to optimize your workouts.
- **Advanced Health Monitoring:** Includes 24-hour heart rate, blood oxygen, blood pressure, and detailed sleep tracking.
- **IP68 Waterproof Rating:** Designed to withstand immersion in water up to 1.5 meters for 30 minutes, suitable for handwashing, rain, and swimming.
- **Long Battery Life:** Up to 3-6 days of typical use on a single 2.5-3 hour charge, with 4-5 hours of continuous Bluetooth call time.
- **Customizable Watch Faces:** Choose from a variety of pre-set dials or personalize with your own photos via the "Da Fit" app.
- **Smart Notifications:** Receive alerts for calls, messages, and social media directly on your watch.
- **Additional Tools:** Weather forecasts, stopwatch, timer, music control, find phone feature, intelligent alarm clock, camera control, women's health tracking, and sedentary reminders.

7. MAINTENANCE

7.1 Cleaning

Regularly clean your smartwatch to ensure proper function and hygiene:

- Wipe the screen and watch body with a soft, lint-free cloth.
- For stubborn dirt, slightly dampen the cloth with water. Avoid using harsh chemicals or abrasive materials.
- Ensure the charging contacts are clean and dry before charging.

7.2 Water Resistance (IP68)

The AOLON Curve Smart Watch is IP68 waterproof, meaning it is protected against dust and can withstand

immersion in water up to 1.5 meters for 30 minutes. While it is suitable for daily activities like handwashing, rain, and swimming, it is recommended to:

- Avoid prolonged exposure to hot water, steam, or high-pressure water jets.
- Dry the watch thoroughly after exposure to water, especially before charging.
- Do not operate buttons underwater.

7.3 Storage

When not in use for extended periods, store the watch in a cool, dry place away from direct sunlight and extreme temperatures.

8. TROUBLESHOOTING

If you encounter issues with your AOLON Curve Smart Watch, refer to the following common solutions:

Problem	Possible Solution
Watch does not turn on or respond.	Ensure the watch is fully charged. Connect it to the charger for at least 30 minutes. If unresponsive, try a soft reset by pressing and holding the crown button for 10-15 seconds.
Cannot pair with smartphone.	<ol style="list-style-type: none">1. Ensure Bluetooth is enabled on your phone.2. Make sure the watch is sufficiently charged.3. Restart both the watch and your phone.4. Ensure the "Da Fit" app has necessary permissions.5. Try unpairing any previously connected devices from the app and phone's Bluetooth settings before attempting to pair again.
Notifications are not received.	<ol style="list-style-type: none">1. Check if the watch is properly connected to the app.2. Verify notification permissions for the "Da Fit" app in your phone's settings.3. Ensure app notifications are enabled within the "Da Fit" app itself.4. Make sure your phone is not in 'Do Not Disturb' mode.
Inaccurate step count or health data.	<ol style="list-style-type: none">1. Ensure the watch is worn snugly on your wrist, about one finger's width from the wrist bone.2. Calibrate the step counter in the app if an option is available.3. Note that arm movements can sometimes be misinterpreted as steps. For best accuracy, ensure natural arm swing during walking.4. For health data, ensure the sensors on the back of the watch are clean and in direct contact with your skin.
Short battery life.	<ol style="list-style-type: none">1. Reduce screen brightness.2. Limit frequent use of power-intensive features like continuous heart rate monitoring or frequent calls.3. Turn off 'Always-On Display' if enabled.4. Ensure the watch is fully charged each time.

If the problem persists, please contact AOLON customer support for further assistance.

9. SPECIFICATIONS



Feature	Detail
Model Number	Aolon Curve 121
Product Dimensions	1.89 x 1.56 x 0.51 inches
Item Weight	4.8 ounces
Screen Size	2.01 Inches
Battery Type	1 Lithium Polymer battery (included)
Battery Capacity	300 Milliamp Hours
Operating System	Android Wear (compatible with Android 6.0+ / iOS 9.0+)
Connectivity Technology	Bluetooth V5.3+EDR
Water Resistance	IP68
Special Features	Activity Tracker, Heart Rate Monitor, Sleep Tracker, Blood Oxygen Monitor, Blood Pressure Monitor, Call Functionality, Notifications, 120+ Sport Modes




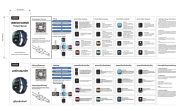
10. WARRANTY AND SUPPORT

AOLON proudly stands behind all its products. The AOLON Curve Smart Watch comes with **a2-year quality support warranty**. Should you encounter any issues or require assistance with your smartwatch, please do not hesitate to contact our customer support team. Refer to the contact information provided with your purchase or visit the official AOLON website for support details.

© 2024 AOLON. All rights reserved.

Related Documents - Aolon Curve 121

	<p>WATCH Foom Lite User Manual: Setup, Features, and Troubleshooting</p> <p>This user manual provides comprehensive instructions for the WATCH Foom Lite smartwatch by aolon. It covers app download, device pairing, charging, feature usage (step counting, heart rate, sleep tracking, calls, music, weather), settings, precautions, and troubleshooting common issues.</p>
	<p>aolon HS5 Smartwatch: Features and Components Overview</p> <p>Discover the aolon HS5 Smartwatch. This overview details its key features like Bluetooth calling, heart rate and blood oxygen monitoring, and its physical components. Manufactured in China.</p>

 <p>Huafit Watch GTR Mini PRODUCT MANUAL</p>	<p>aolon GTRmini Smartwatch User Manual - Setup, Features, and Specifications</p> <p>Comprehensive user manual for the aolon GTRmini HD Smartwatch (Model AB5681). This guide covers device setup, smartphone pairing via the Huafit app, detailed feature explanations for sports tracking, health monitoring, notifications, and technical specifications. Compatible with Android and iOS devices.</p>
 <p>PRODUCT MANUAL HUAFIT WATCH GTS</p>	<p>HUAFIT GTS Smartwatch - aolon BK32886 User Manual</p> <p>User manual for the HUAFIT GTS Smartwatch by aolon (model BK32886). Features include 30-day battery life, IP67 waterproofing, heart rate, and blood oxygen monitoring.</p>
 <p>Huafit Watch Metro2 PRODUCT MANUAL</p>	<p>aolon METRO2 Smartwatch User Manual</p> <p>Comprehensive user manual for the aolon METRO2 smartwatch, detailing features like its 1.83-inch large screen, SOS emergency calls, IP68 water resistance, fitness tracking capabilities, and Bluetooth connectivity for calls. Includes setup, operation, and maintenance instructions.</p>
	<p>Aolon Curve Smart Watch User Manual and Features</p> <p>Explore the features, specifications, and regulatory information for the Aolon Curve Smart Watch. This guide covers app download, pairing, health monitoring, and FCC compliance.</p>