

Manuals+

[Q & A](#) | [Deep Search](#) | [Upload](#)

manuals.plus /

- › [Lancaster Home Products](#) /
- › [PreVent-It Soffit Vents 4 Inch - User Manual](#)

Lancaster Home Products 42503.01

PreVent-It 4-Inch Soffit Vent User Manual

Model: 42503.01 | Brand: Lancaster Home Products

1. PRODUCT OVERVIEW

The PreVent-It 4-inch Soffit Vent is a patented solution designed to effectively exhaust moist air from bathroom fans directly away from your home's soffit. This innovative design prevents moisture from re-entering the attic space, mitigating risks of water damage, mold growth, and increased energy costs associated with poor ventilation. It features a durable resin plastic construction and includes all necessary mounting hardware for installation.

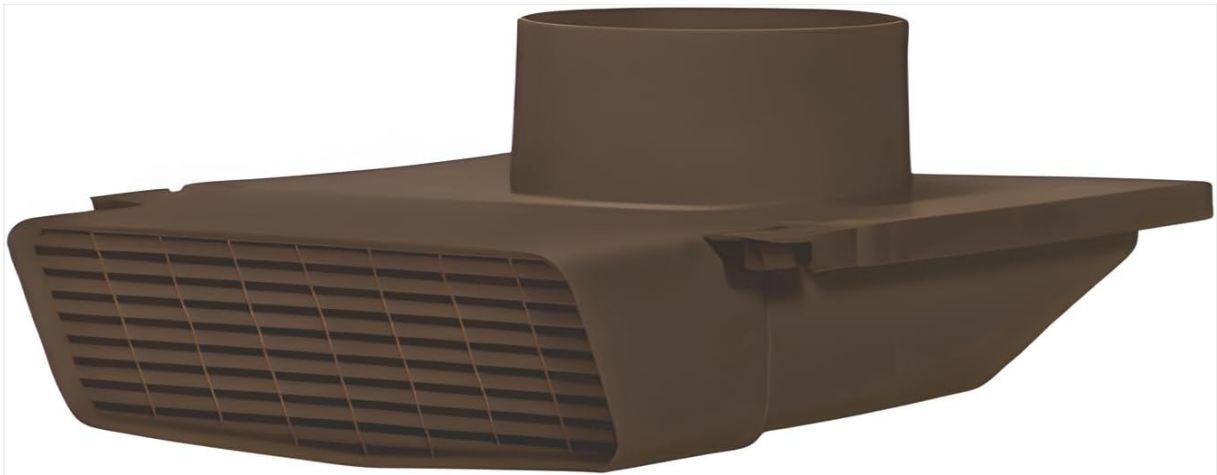


Image 1: Front view of the PreVent-It 4-inch Soffit Vent.

2. KEY FEATURES

- **Patented Design:** Uniquely engineered to direct moist bathroom air away from the soffit, preventing re-entry into the home.
- **Moisture Displacement:** Scientifically proven to displace over 95% of exhausted moist air, protecting against water and roof damage.
- **Closed System Damper:** Features an integrated damper/flap that opens with airflow and closes to prevent pests and unwanted air from entering.
- **Easy Installation:** Designed for straightforward installation with included screws.

- **Durable Construction:** Made from high-quality, weather-resistant resin plastic for long-lasting performance.
- **Removable Screen:** Allows for easy cleaning and maintenance.
- **Made in USA:** Manufactured in the United States.

3. INSTALLATION GUIDE

Before beginning installation, ensure you have the necessary tools: a drill, a 4.5-inch hole saw, a screwdriver, and safety glasses.

1. **Prepare the Soffit:** Identify the optimal location on your soffit for the vent. Ensure there is sufficient space and no obstructions.
2. **Drill Pilot Hole:** Drill a small pilot hole through the soffit at the center of your chosen location.
3. **Cut Opening:** Using a 4.5-inch hole saw, carefully cut a circular opening in the soffit. This opening must be at least 4.5 inches in diameter to accommodate the vent's duct connection.



Image 2: Ensure a minimum 4.5-inch diameter hole is cut in the soffit.

4. **Connect Ducting:** Attach your 4-inch bathroom exhaust fan ducting to the circular connection point on the top of the soffit vent. Secure the connection with appropriate duct clamps (not included).

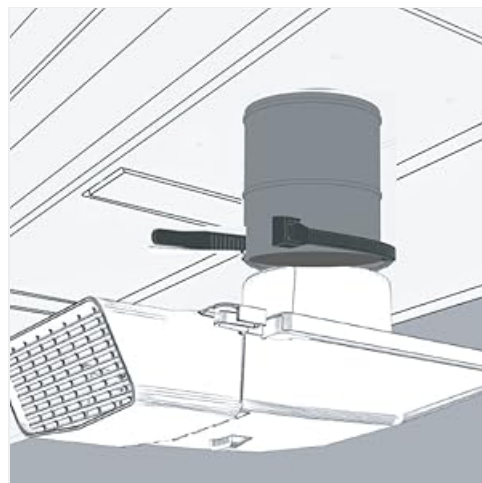


Image 3: The soffit vent connects to the bathroom fan ducting in the attic.

5. **Position the Vent:** Insert the vent's duct connection through the hole in the soffit. Ensure the vent's main body is flush against the soffit surface.
6. **Secure the Vent:** Use the four included screws to secure the vent to the soffit. Drive the screws through the designated mounting holes on the vent's flange.



Image 4: The soffit vent and the four included screws for mounting.

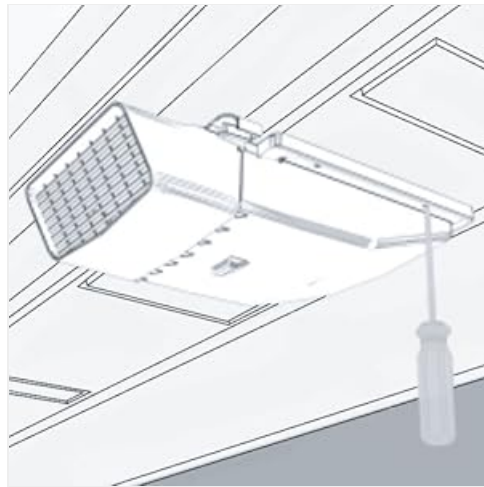


Image 5: Secure the vent firmly to the soffit using the provided screws.

The soffit vent is designed to work in conjunction with your home's passive air flow, directing warm, moist air out and preventing it from re-entering the home. Cool air enters through the soffit, moves through the attic, and exits via the ridge vent, creating a continuous airflow that helps manage moisture.

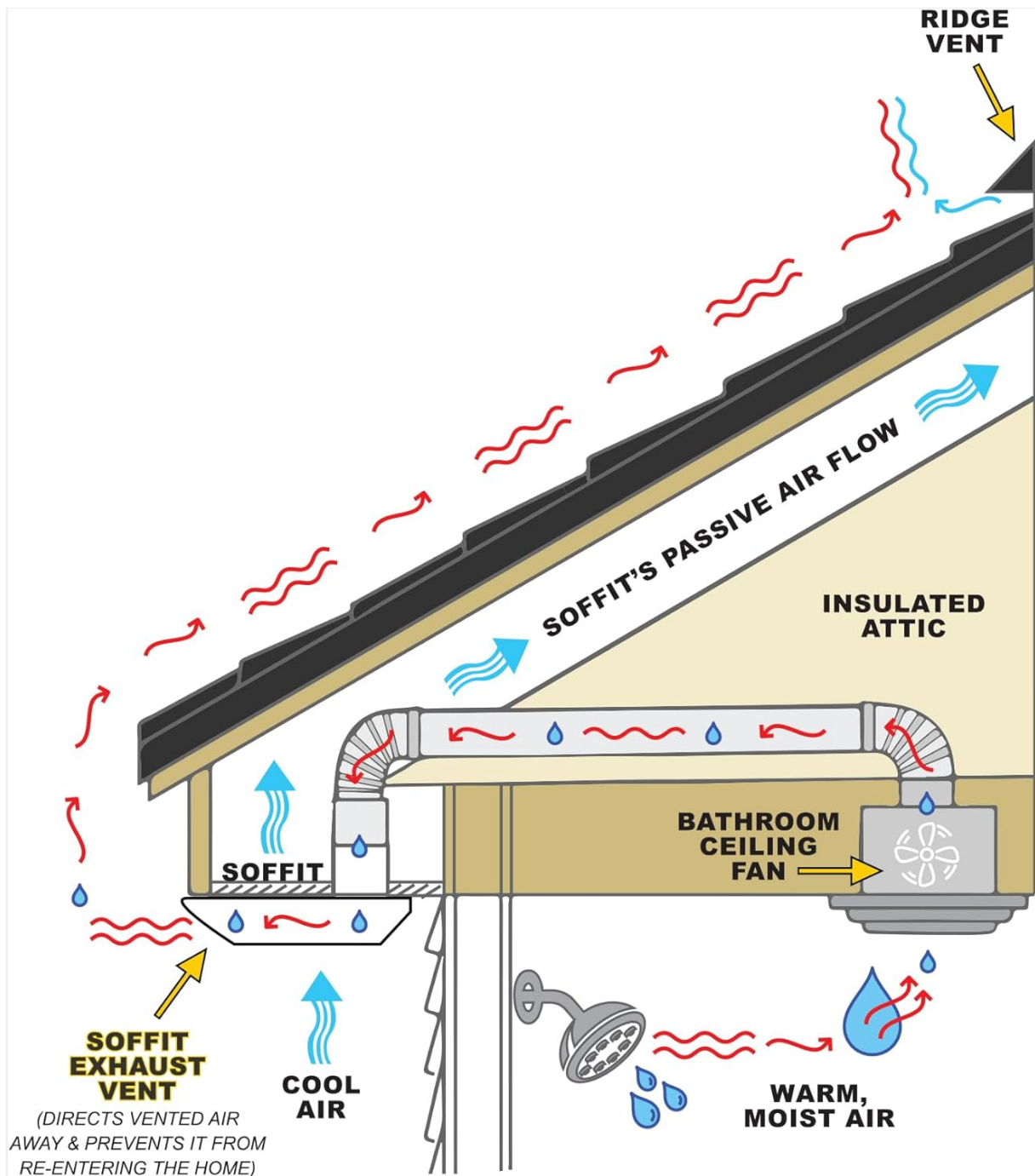


Image 6: Illustration of how the soffit vent integrates with the home's ventilation system.

4. OPERATING INSTRUCTIONS

The PreVent-It Soffit Vent operates automatically. When your bathroom exhaust fan is active, the airflow will push open the internal damper/flap, allowing moist air to be expelled. Once the fan is turned off, the damper/flap will close, creating a sealed system that prevents outside air, pests, and debris from entering your home through the vent.



Image 7: The internal flap opens to allow air out and closes to seal the vent.

5. MAINTENANCE

To ensure optimal performance and longevity of your PreVent-It Soffit Vent, periodic maintenance is recommended. The vent features a removable screen for easy cleaning. Simply unclip or unscrew the screen, clean any accumulated debris or lint, and reattach it securely. Inspect the damper/flap periodically to ensure it moves freely and is not obstructed.

6. TROUBLESHOOTING

- **Restricted Airflow/Loud Fan Noise:** This vent is designed for bath fans up to 110 CFM. If you are using a higher CFM fan, you may experience louder fan noise or restricted airflow. Consider using a fan within the recommended CFM range for optimal performance.
- **Damper Not Closing Properly:** Check for any debris or obstructions that might be preventing the damper/flap from fully closing. Clean the screen and the damper mechanism as described in the Maintenance section.
- **Moisture Issues Persist:** Ensure the ducting from your bathroom fan to the soffit vent is properly sealed and insulated. Verify that the vent is securely mounted and that there are no gaps allowing air re-entry. Consult a professional if issues persist.

7. SPECIFICATIONS

Brand	Lancaster Home Products
Model Name	PreVent-It Bathroom Soffit Vent
Item Model Number	42503.01
Color	Brown
Product Dimensions	11.25"D x 7.85"W x 3.75"H
Item Weight	0.91 Pounds (14.6 ounces)
Material	Plastic (Durable Resin)
Included Components	Soffit Vent, 4 Screws (#8-15 x 1")
Indoor/Outdoor Usage	Outdoor
Recommended Uses	Exhausting Bathroom Fan, Ventilating
UPC	026978425034

8. WARRANTY INFORMATION

The PreVent-It Soffit Vent comes with a **1-Year Limited Warranty** from the date of purchase. This warranty covers defects in materials and workmanship under normal use. Please retain your proof of purchase for warranty claims. For full warranty details, refer to the product packaging or contact customer support.

9. SUPPORT

For additional support, installation assistance, or to inquire about replacement parts, please visit the official website: www.soffitvent.com. You may also find helpful resources and FAQs on the website.