

Manuals.plus /

› VIPEK /

› VIPEK V5L Heavy Duty Garment Rack with Dimmable LED Light Instruction Manual

VIPEK V5L

VIPEK V5L Heavy Duty Garment Rack with Dimmable LED Light Instruction Manual

Model: V5L | Brand: VIPEK

1. PRODUCT OVERVIEW

The VIPEK V5L Garment Rack is a heavy-duty, freestanding metal clothing rack designed for organizing clothes, shoes, and accessories. It features adjustable shelves, removable hanging rods, and integrated dimmable LED lights for enhanced visibility. Constructed from high-quality carbon steel, it offers a strong bearing capacity of up to 890 lbs, providing a stable and sturdy storage solution.

- **Dimensions:** 68.9" L x 15.7" W x 76.4" H.
- **Strong Bearing Capacity:** Load capacity up to 890 lbs, designed for durability and resistance to deformation.
- **Sturdy & Flexible:** Made of high-quality iron, featuring 8 adjustable shelves and 4 removable hanging rods for customizable configurations.
- **Upgraded Closet with Dimmable LED Lights:** Features dual rows of warm white (3000K) LED beads with a glare-free frosted cover. Stepless dimming allows easy adjustment of brightness via a control box.
- **Easy to Assemble:** Designed for straightforward assembly with clear instructions. An installation video is also available for guidance.

2. SAFETY INFORMATION

Please read and understand all safety information before assembling or using this product.

- Do not overload the garment rack beyond its maximum load capacity of 890 lbs.
- Be cautious of sharp edges during assembly and use.
- Ensure all connections are securely fastened before placing items on the rack.
- Use the provided anti-tip devices to secure the rack to a wall, especially in households with children or pets, to prevent accidental tipping.
- Keep small parts away from children to prevent choking hazards.

3. PACKAGE CONTENTS

Verify that all components are present before beginning assembly. Refer to the parts list in the user manual for detailed identification.

- Metal Shelves (A)
- Upper Poles (B)
- Middle Poles (C)
- Lower Poles (D)
- Sidebars (E)
- Clothes Hanger Rods (F)
- Hook Brackets (G)
- Screws (H)
- Plastic Clips (I)
- Anti-Tip Devices (J)
- LED Lights with Switch Wire and Power Adapter
- Rubber Mallet (for assembly)

Stepless Dimming

3000K Warm Light

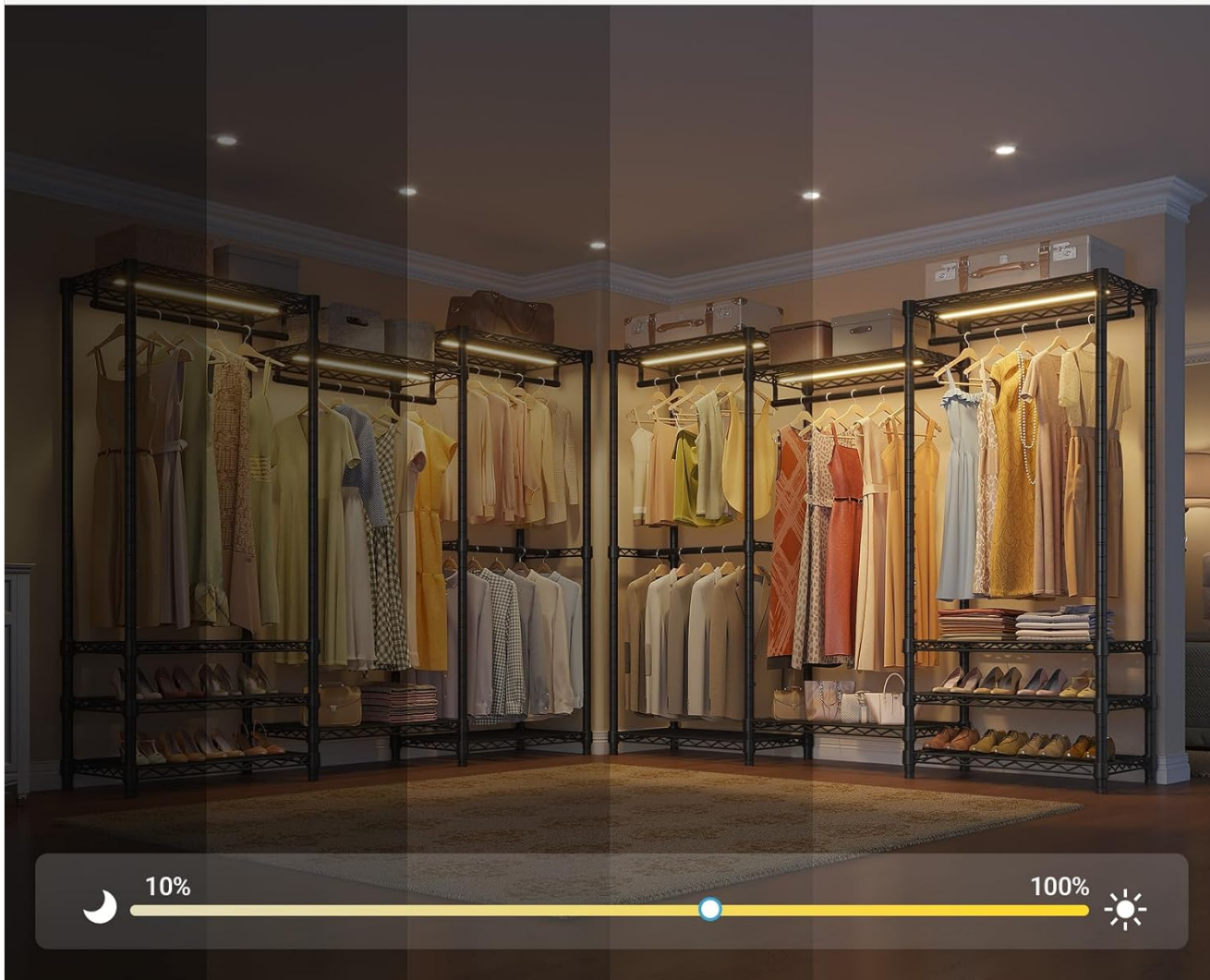


Image: All components of the VIPEK V5L Garment Rack laid out for assembly. This includes various metal poles, wire shelves, plastic clips, and hardware.

4. SETUP AND ASSEMBLY

Follow these steps carefully to assemble your VIPEK V5L Garment Rack. An installation video is available for visual guidance.

4.1. Prepare Poles and Clips

1. Identify the Lower Poles (D). Attach the Plastic Clips (I) to the grooves on the poles. Ensure the "TOP" arrow on the clips points upwards and that the flanges fit perfectly into the grooves. All clips for a single shelf should be at the same height.
2. Connect Middle Poles (C) to Lower Poles (D) by twisting clockwise. Ensure the hollow end of the middle pole connects to the silver connector of the lower pole.
3. Connect Upper Poles (B) to Middle Poles (C) similarly.

Sectioned Storage Design

Easy Organization and Display



Image: Close-up of a sturdy wire shelf, highlighting its pyramid-shaped design and denser bottom lines for increased load capacity.

4.2. Assemble Base Sections

1. For each base section, slide four Lower Poles (D) through the sleeves of a Metal Shelf (A). Ensure the VIPEK logo on the shelf is facing the correct direction.
2. Erect the assembly. Press down on the corners of the wire shelf with your palms to firmly secure it onto the plastic clips.
3. Repeat for all base sections.



Sturdy Wire Shelf




-  Pyramid-shaped Design
-  Denser Bottom Lines
-  Strengthens Load Capacity

Image: Diagram illustrating four different ways the garment rack can be configured to suit various storage needs.

4.3. Connect Middle and Top Sections

1. Attach Middle Poles (C) to the assembled base sections.
2. Place Metal Shelves (A) onto the Plastic Clips (I) at the desired height for the middle sections. Ensure the shelf is parallel to the floor and slide it down slowly until all four sleeves fit snugly onto the clips.
3. Attach Upper Poles (B) to the middle sections.
4. Place Metal Shelves (A) onto the Plastic Clips (I) at the desired height for the top sections.

4.4. Install Support Rails and Hanger Rods

1. Attach Sidebars (E) to the poles using Plastic Clips (I). Ensure the pointed angle of the metal faces upwards.
2. Attach Hook Brackets (G) to the Clothes Hanger Rods (F) using Screws (H). Partially tighten the screws first.
3. Hang the assembled Clothes Hanger Rods (F) onto the wire shelves and then fully tighten the screws.

4.5. Final Adjustments and Anti-Tip Device

1. Use a rubber mallet to gently tap the wire shelves at their corners to ensure they are firmly connected to the

poles.

2. Install the Anti-Tip Devices (J) to secure the garment rack to the wall, following the instructions provided in the package.

Installation Video Tutorial

For a detailed visual guide on assembling your VIPEK V5L Garment Rack, please watch the official installation tutorial below.

Your browser does not support the video tag.

Video: Official VIPEK V5 Series Installation Tutorial. This video provides step-by-step instructions for assembling the garment rack, including identifying parts, connecting poles, attaching shelves, and installing accessories.

5. OPERATING INSTRUCTIONS (DIMMABLE LED LIGHTS)

The VIPEK V5L Garment Rack features integrated dimmable LED lights for convenient illumination.

1. **Power On/Off:** Locate the control box for the LED lights. Press the button once to turn the lights on or off.
2. **Stepless Dimming:** To adjust the brightness, press and hold the button on the control box. The lights will gradually dim or brighten. Release the button when the desired brightness level is reached. The lights offer a 3000K warm white color temperature.

Premium Quality in Every Detail

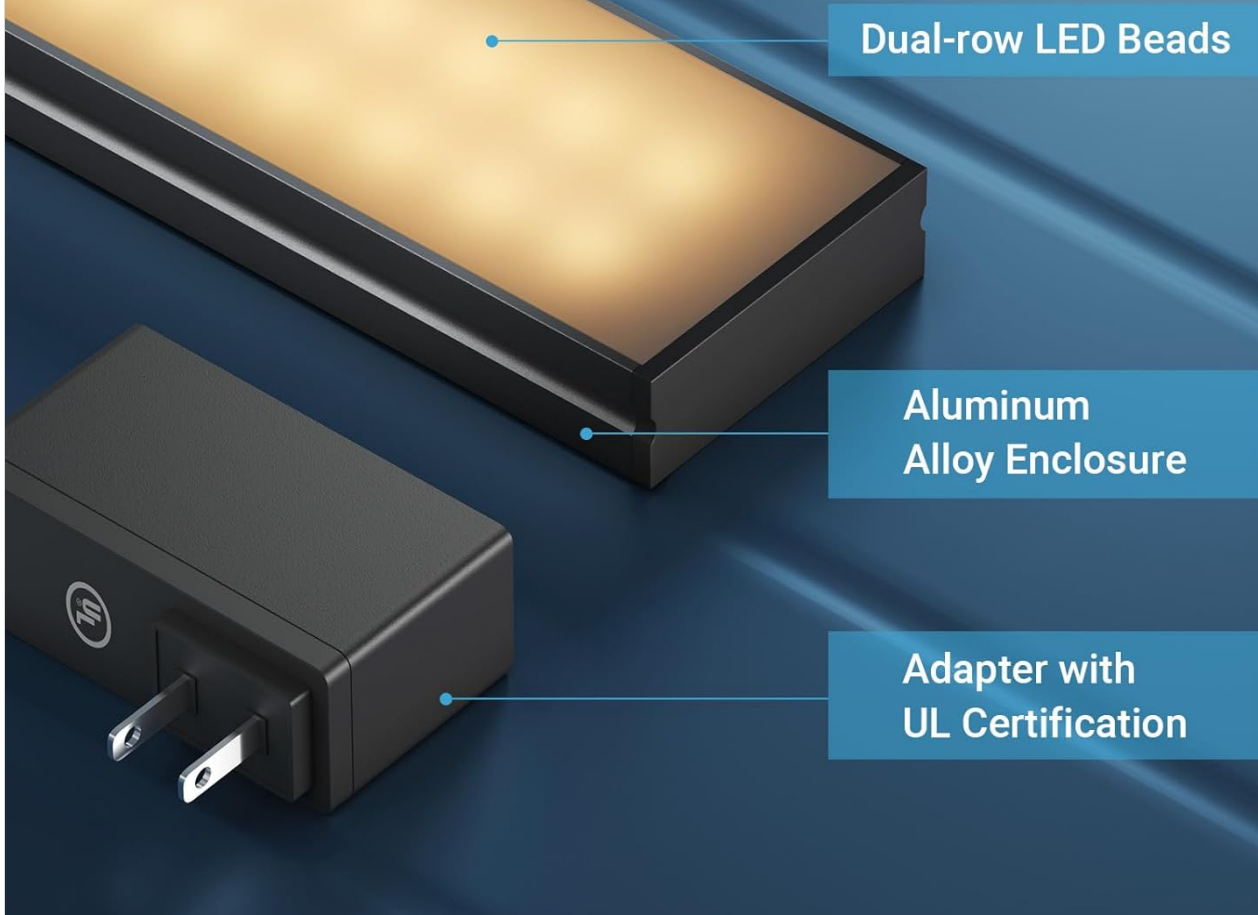


Image: Close-up view of the LED light strip, highlighting its premium quality with dual-row LED beads, an aluminum alloy enclosure, and an adapter with UL certification.

Your browser does not support the video tag.

Video: Demonstration of the stepless dimming feature of the VIPEK V5L LED lights, showing how the brightness can be adjusted from low to high.

6. MAINTENANCE

To ensure the longevity and optimal performance of your garment rack, follow these maintenance tips:

- **Cleaning:** Wipe down the metal surfaces with a soft, damp cloth. Avoid abrasive cleaners or harsh chemicals that could damage the finish.
- **Inspection:** Periodically check all screws and connections to ensure they remain tight. Retighten if necessary.
- **Load Management:** Distribute weight evenly across the shelves and hanging rods to prevent stress on any single point. Do not exceed the maximum load capacity.
- **LED Lights:** Ensure the LED lights and wiring are free from damage. If any damage occurs, discontinue use and contact customer support.

7. TROUBLESHOOTING

If you encounter any issues with your VIPEK V5L Garment Rack, refer to the following common troubleshooting steps:

- **Rack is Wobbly:**

- Ensure all plastic clips are correctly positioned in the grooves and fully engaged.
- Use the rubber mallet to firmly tap down all shelves onto their respective clips.
- Check that the adjustable feet are evenly balanced on the floor.

- **LED Lights Not Working:**

- Verify that the power adapter is securely plugged into a working electrical outlet.
- Check all connections between the LED light strips, switch wire, and power adapter.
- Ensure the switch wire is firmly and well connected.
- If the issue persists, contact customer support.

- **Missing Parts:**

- Carefully check all packaging materials. If parts are still missing or damaged, kindly reach out to VIPEK customer support for assistance.

8. SPECIFICATIONS

Brand	VIPEK
Model	V5L
Color	Black Rack With Warm White Light
Material Type	Carbon Steel
Item Dimensions	15.7 x 68.9 x 76.4 inches
Max Load Capacity	890 lbs
LED Light Color Temperature	3000K Warm White
Assembly Required	Yes

9. WARRANTY AND SUPPORT

For warranty information, missing parts, or any other product-related inquiries, please contact VIPEK customer support directly. Any unauthorized modification to this item will void its warranty.

Refer to the contact information provided with your purchase or visit the official VIPEK website for support details.