

GiiKER JKJZQ001

GiiKER Tic Tac Toe Bolt Game User Manual

Model: JKJZQ001

Brand: GiiKER

INTRODUCTION

The GiiKER Tic Tac Toe Bolt Game is an innovative 3-in-1 handheld puzzle game designed for engaging fun and cognitive development. It offers a unique twist on the classic Tic-Tac-Toe, alongside a memory challenge and a strategic cover-up game. This manual provides comprehensive instructions for setup, operation, maintenance, and troubleshooting to ensure an optimal user experience.



Image: The GliKER Tic Tac Toe Bolt Game main unit, featuring the digital display and various game pieces (X and O shapes in orange and blue) arranged around it.

KEY FEATURES

- **Infinite Tic-Tac-Toe with Adaptive AI:** Experience the classic game with a dynamic twist. Play head-to-head or challenge an adaptive AI that adjusts its difficulty based on your skill level, ensuring a fresh and engaging challenge. This mode prevents endless draws by making the oldest mark disappear when a new one is placed after the third mark.
- **Memory Flash Challenge:** Test and boost your memory by identifying and recalling light sequences. This mode helps sharpen focus and offers 9 progressive difficulties to master.
- **Cover-Up Tic-Tac-Toe:** A strategic board game where each piece comes in three sizes. Players can place new pieces or move existing ones, with larger pieces able to cover smaller ones. The goal is to connect three of your color to win, exercising critical thinking and reasoning skills.
- **Portable and Durable Design:** Made from high-quality, non-toxic ABS plastic, this game is built for durability and safety. Its compact size makes it ideal for travel and on-the-go fun.
- **Screen-Free Entertainment:** Provides a healthy alternative to screen time, promoting interactive play and cognitive development for all ages.

GIKER

3 IN 1 GAME

TIC-TAC-TOE



AWARD-WINNING



OVER 500
MILLION
VIEWS

Image: The GiiKER Tic Tac Toe Bolt Game displayed alongside several award badges, highlighting its recognition for educational and family-friendly design.

WHAT'S IN THE BOX

- Game console
- Game pieces (X and O shapes in various sizes)
- Tic-Tac-Toe grid pieces

COMPONENTS

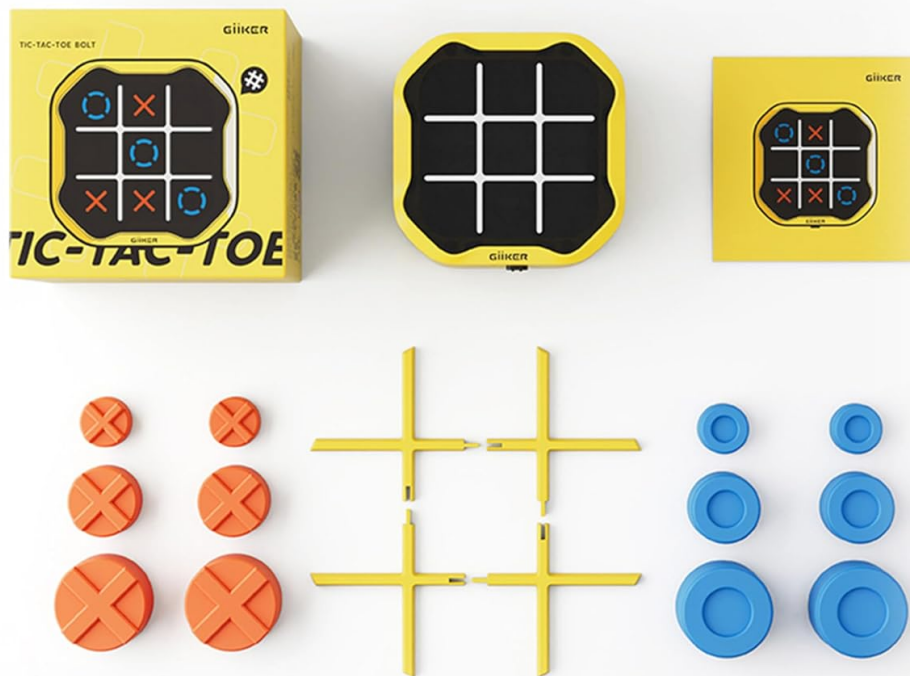


Image: A flat lay showing all components included in the GiiKER Tic Tac Toe Bolt Game package, including the main console, game pieces, and grid.

SETUP

1. **Battery Installation:** The GiiKER Tic Tac Toe Bolt Game requires 2 AA batteries. Locate the battery compartment on the underside of the game console. Open the compartment cover, insert the batteries according to the polarity indicators (+/-), and close the cover securely.
2. **Power On:** Press the power button located on the side of the console to turn on the device.
3. **Prepare Game Pieces:** For physical game modes like Cover-Up Tic-Tac-Toe, assemble the grid pieces and have the X and O game pieces ready.

OPERATING MODES

1. Infinite Tic-Tac-Toe

This mode offers a dynamic version of the classic game. The game board is digital, and marks appear as lights.

- **Player Options:** Choose between head-to-head play with another person or challenge the adaptive

AI.

- **Gameplay:** Players take turns placing their marks (X or O) on the 3x3 grid.
- **Dynamic Board:** After a player places their third mark, the oldest mark on the board will disappear when a new mark is placed. This keeps the game moving and prevents ties.
- **Winning Condition:** The first player to connect three of their marks in a row (horizontally, vertically, or diagonally) wins.



Image: Two children engaged in playing the GiiKER Tic Tac Toe Bolt Game outdoors, demonstrating its portability and screen-free nature.

2. Memory Flash Challenge

This mode is designed to enhance memory and focus.

- **Objective:** Recall and replicate sequences of flashing lights on the game grid.
- **Difficulty:** Progress through 9 increasing levels of difficulty.
- **How to Play:** The game will display a sequence of lights. Observe carefully, then tap the corresponding squares in the correct order.



Image: A child holding the GiiKER Tic Tac Toe Bolt Game, with text overlays indicating "Memory Trainer" and "Deep Focus," illustrating the cognitive benefits of the game.

3. Cover-Up Tic-Tac-Toe

This mode uses the physical game pieces and grid for a strategic variant.

- **Pieces:** Each player has X or O pieces in three different sizes (small, medium, large).
- **Turns:** On your turn, you can either place a new piece on an empty square or move one of your existing pieces to another square.
- **Covering:** A larger piece can be placed over a smaller piece, effectively "covering" it.
- **Winning Condition:** Connect three of your color in a row (horizontally, vertically, or diagonally) to win. Covered pieces do not count towards a win unless they are uncovered.



**EXERCISE
CRITICAL THINKING**

**BUILD
REASONING SKILLS**

Image: An adult and a child playing the physical Cover-Up Tic-Tac-Toe game, demonstrating the use of different sized pieces and the strategic element of covering.

SPECIFICATIONS

Feature	Detail
Model Number	JKJZQ001
Dimensions	3.46 x 3.46 x 2.01 inches
Item Weight	6.3 ounces (0.18 Kilograms)
Material	ABS Plastic
Power Source	Battery Powered (2 AA batteries required)
Display Type	LCD
Controller Type	Button Control
Recommended Age	3 years and up

MAINTENANCE

- **Cleaning:** Use a soft, dry cloth to clean the surface of the game console. Do not use abrasive cleaners or immerse the device in water.
- **Storage:** Store the game in a cool, dry place away from direct sunlight and extreme temperatures. Ensure all pieces are stored together to prevent loss.
- **Battery Care:** Remove batteries if the device will not be used for an extended period to prevent leakage and damage.

TROUBLESHOOTING

- **Device Not Turning On:**
 - Check if batteries are inserted correctly with proper polarity.
 - Replace old or depleted batteries with new ones.
- **Lights Not Responding:**
 - Ensure the game is powered on.
 - Check battery level and replace if necessary.
 - If the issue persists, try turning the device off and on again to reset.
- **Game Malfunctions:**
 - Turn the device off, wait a few seconds, and then turn it back on.
 - Ensure you are following the game mode instructions correctly.

SAFETY INFORMATION

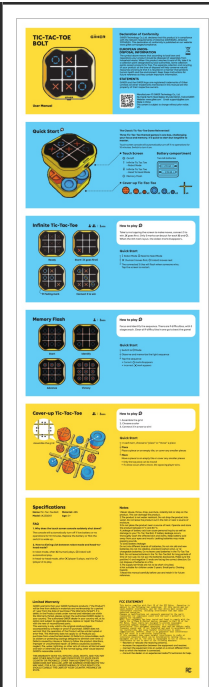
WARNING: CHOKING HAZARD - Small parts. Not for children under 3 years.

- Always supervise young children during play.
- Do not attempt to disassemble or modify the device.
- Keep away from water and excessive moisture.
- Dispose of batteries responsibly according to local regulations.

WARRANTY AND SUPPORT

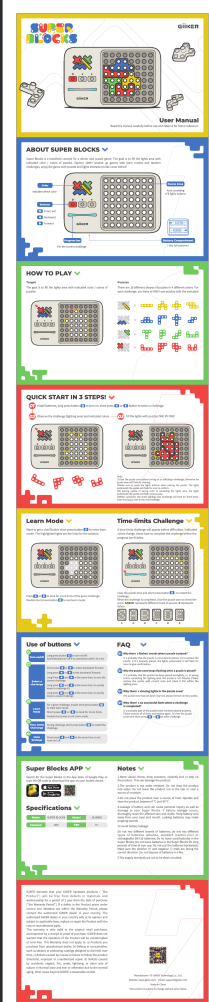
GiiKER products are designed for quality and durability. For any questions, technical support, or warranty inquiries, please contact GiiKER customer service directly. Refer to the contact information provided with your product packaging or visit the official GiiKER website for assistance.

For more information, visit the [GiiKER Store on Amazon](#).




[GiiKER Tic-Tac-Toe Bolt User Manual and Quick Start Guide](#)

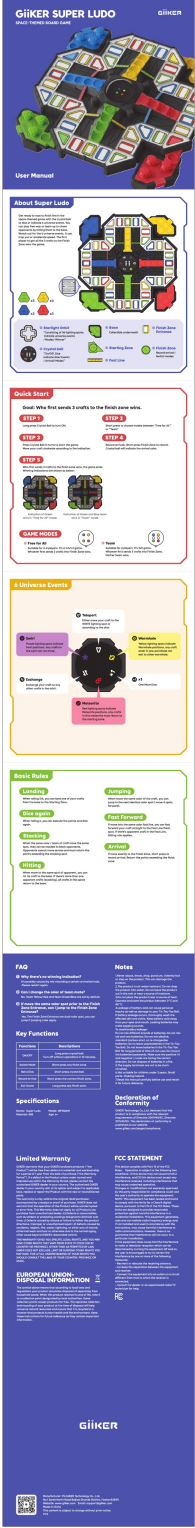
Comprehensive guide to the GiiKER Tic-Tac-Toe Bolt, including how to play, game modes, and technical specifications. Learn how to set up and enjoy this interactive puzzle game.



[Super Blocks User Manual - GiiKER](#)

User manual for the GiiKER Super Blocks, a handheld puzzle game console. Learn how to play, quick start guide, button functions, FAQ, app information, and specifications.

	<p>GiiKER Smart Four: AI-Powered 3D Strategy Board Game - Quick Start & Manual</p> <p>Get started with the GiiKER Smart Four, an AI-enhanced 3D Connect Four strategy board game. This guide covers setup, gameplay modes (Head-to-Head, Robot), app connectivity, charging, troubleshooting, and specifications for model JKSZQ001.</p>



[GiiKER Super Ludo Space-Themed Board Game User Manual](#)

User manual for the GiiKER Super Ludo, a space-themed board game. Learn how to play, understand game modes, universe events, basic rules, and FAQs. Includes product specifications, warranty, and compliance information.

