

errzom 1091961199925

errzom Wooden Window Blinds User Manual

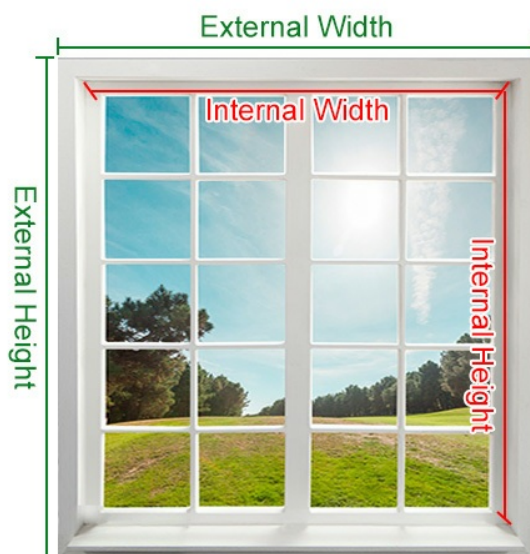
Brand: errzom

Model: 1091961199925

INTRODUCTION

Thank you for choosing errzom Wooden Window Blinds. This manual provides essential information for the safe installation, operation, and maintenance of your new light filtering solid wood blinds. Please read these instructions carefully before installation and retain them for future reference.

ABOUT SIZE MEASUREMENT



1) If Installed Inside the Window Frame

Blinds Width = Window Inside Width - 1 cm

Blinds Height = Window High Inside

2) If Installed Outside the Window Frame

Width = Outside Width + 20 cm

Height = Outside Height + 20 cm

Note: Internal installation requires a minimum depth of 6 cm

Figure 1: Key features of errzom Wooden Window Blinds, highlighting material quality and safety.

SAFETY INFORMATION

- Keep cords out of reach of children and pets to prevent strangulation hazards.
- Ensure all mounting hardware is securely fastened to a stable surface.
- Do not expose the blinds to rain for extended periods if installed outdoors.
- Handle the blinds carefully during installation to avoid damage to the slats or operating mechanisms.

PACKAGE CONTENTS

Your errzom Wooden Window Blinds package includes:

- Pre-assembled Wooden Window Blinds
- Mounting Brackets
- Screws and Wall Anchors
- Installation Instructions (this manual)

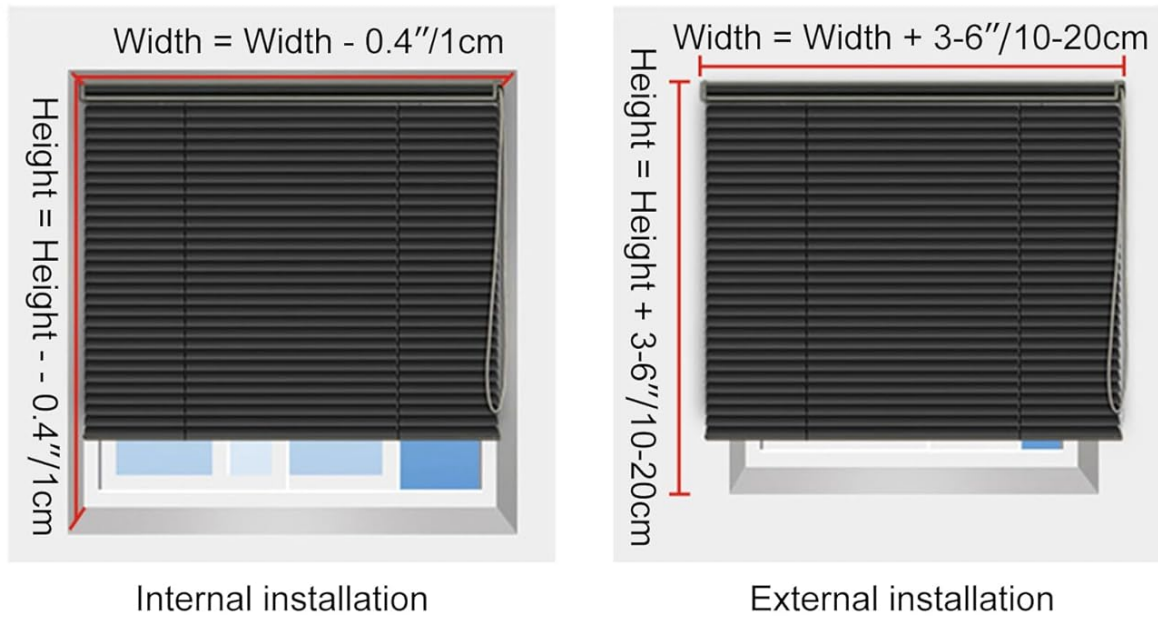
Please verify all components are present before beginning installation. If any parts are missing or damaged, contact customer support.

INSTALLATION

1. Measurement Guide

Accurate measurements are crucial for proper blind fit and function. Determine whether you will be performing an inside mount (within the window frame) or an outside mount (outside the window frame).

MEASUREMENT METHOD



Note:

Please choose the size closest to your desired size to order, then email us your exact size!

After receiving your order, we will also send you an email to double confirm the size, so please check your mailbox and give us a confirmation within 24 hours, if we don't get a reply, we will make it to the size you ordered.

We ship within 3-7 days after we receive your custom size.

Figure 2: Measurement methods for internal and external installation.

Note: Internal installation requires a minimum window frame depth of 6 cm (approximately 2.36 inches).

2. Mounting Instructions

Follow these steps for secure installation:

- Marking:** Use a pencil to mark the desired positions for the mounting brackets. Ensure they are level and spaced appropriately for the blind's width.
- Drilling:** Drill pilot holes at the marked locations. Use appropriate drill bits for your wall material (wood, drywall, concrete). Insert wall anchors if necessary.
- Attach Brackets:** Secure the mounting brackets to the wall or window frame using the provided screws.
- Install Blinds:** Carefully lift the blind headrail and hook it into the installed brackets. Ensure it clicks securely into place.
- Secure Cover:** Attach the decorative valance or headrail cover, if included, to conceal the mounting

hardware.

OPERATION

Your errzom Wooden Window Blinds are designed for easy manual operation, allowing you to control light and privacy.

1. Adjusting Slat Angle (Light Filtering)

To adjust the angle of the slats and control the amount of light entering the room, use the tilt cord. Pull one side of the cord to open the slats, and the other side to close them. This allows for precise light adjustment, from full light to near blackout.

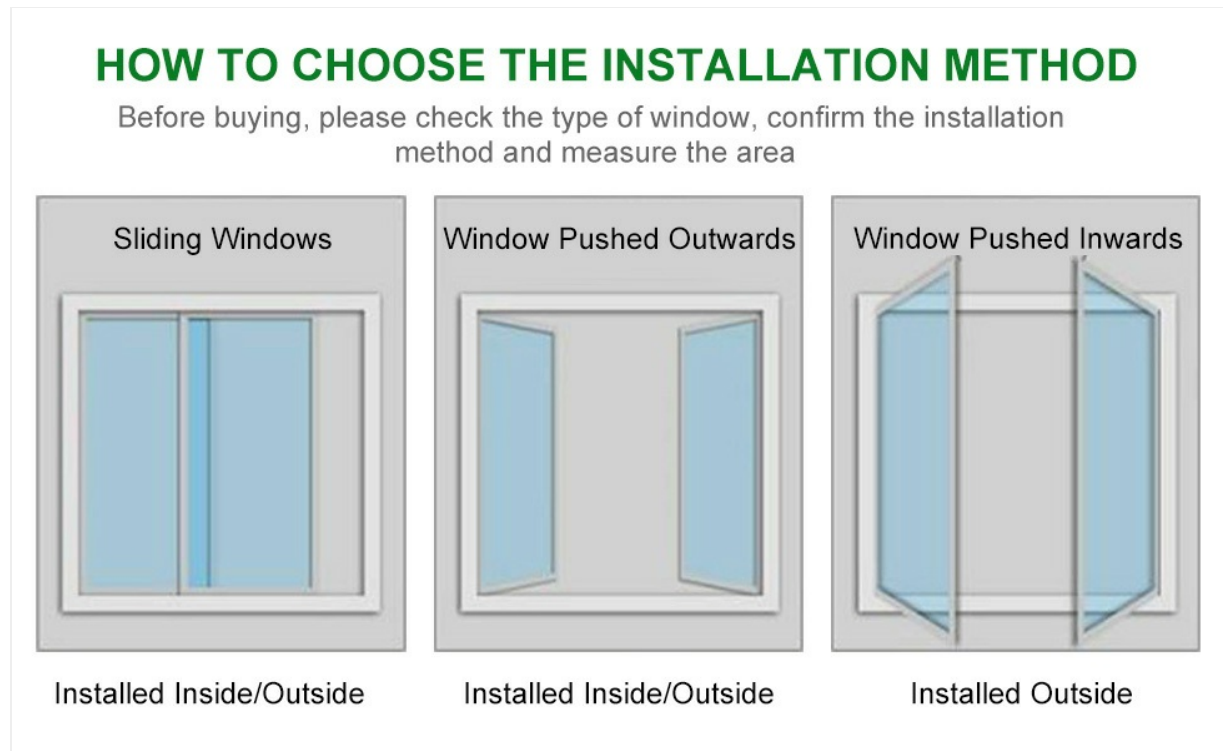
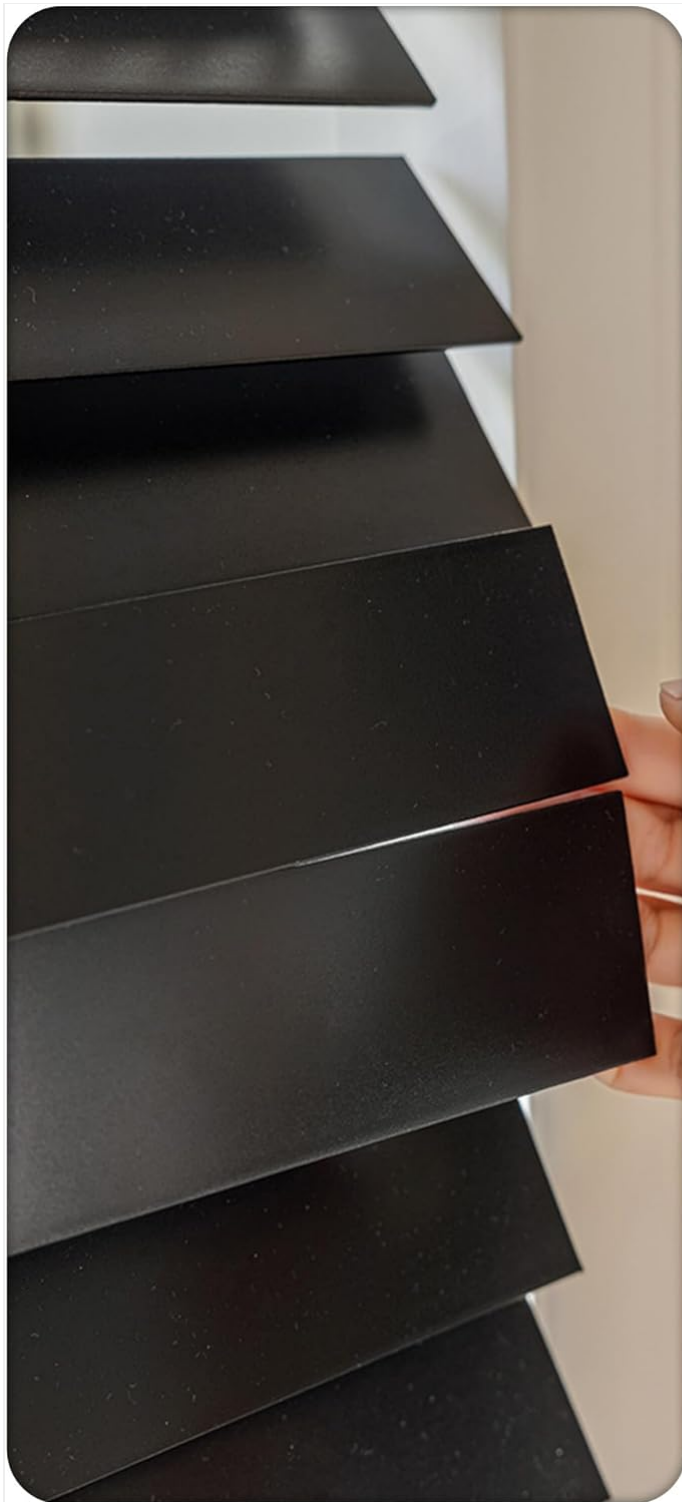


Figure 3: Demonstrates light adjustment capabilities and benefits.



Quality Solid Wood



Strong Toughness



Safe & Non-toxic

Figure 4: Manual adjustment of slat angle.

2. Raising and Lowering Blinds

To raise or lower the entire blind, use the lift cord. Pull the cord downwards to unlock the mechanism, then guide the blind to the desired height. Release the cord to lock the blind in position. The wider ladder cords ensure smooth movement and reduce knotting.

Your browser does not support the video tag.

Video 1: Demonstration of raising and lowering errzom Wooden Window Blinds and adjusting slat angle.

MAINTENANCE

Cleaning

To maintain the appearance and longevity of your wooden blinds, follow these cleaning instructions:

- **Dusting:** Regularly dust the slats with a soft cloth, feather duster, or vacuum cleaner with a brush attachment.
- **Spot Cleaning:** For stubborn spots, use a slightly damp cloth with mild soap. **Do not saturate the wood.** Wipe dry immediately.
- **Avoid Harsh Chemicals:** Do not use abrasive cleaners, solvents, or strong detergents, as these can damage the wood finish.
- **Product Care Instructions:** Spot Clean Only.

General Care

- Avoid exposing the blinds to excessive moisture or humidity, which can cause warping or damage to the wood.
- Ensure cords are not tangled or obstructed during operation to prevent damage to the lifting mechanism.

TROUBLESHOOTING

If you encounter issues with your errzom Wooden Window Blinds, refer to the following common problems and solutions:

- **Blinds not raising/lowering smoothly:** Check for tangled cords or obstructions in the headrail. Ensure the lift cord is pulled straight down.
- **Slats not tilting correctly:** Verify that the tilt cord is not tangled. Gently adjust the slats manually to realign if necessary.
- **Blinds appear uneven:** Recheck mounting bracket installation to ensure they are level. Minor adjustments to the lift cords can sometimes correct slight unevenness.

If problems persist, please contact customer support for further assistance.

SPECIFICATIONS

Brand	errzom
Model Number	1091961199925
Material	Basswood
Color	Black
Size (as per product)	42.5"W x 60"H
Slat Width	5 cm (2 inches)
Operation Mode	Manual (Cord/Chain Control)
Special Feature	Light Filtering, Noise Reduction, UV Protection

Mounting Type	Inside Mount, Outside Mount
Product Care	Spot Clean Only

INSTALLATION METHOD



Figure 5: Construction details and material quality.



Figure 6: Blinds featuring UV water-based paint for a healthy environment.

WARRANTY INFORMATION

Specific warranty details for errzom Wooden Window Blinds are not provided in the product information. Please refer to your purchase documentation or contact the retailer/manufacturer directly for warranty terms and conditions.

CUSTOMER SUPPORT

For any questions, assistance with installation, or troubleshooting not covered in this manual, please contact errzom customer support through the retailer's platform or the official errzom store page on Amazon.

Errzom Store Link: [Visit the errzom Store on Amazon](#)