

LDEXIN 30 Mins Time Switch

LDEXIN 30-Minute Delay Timer Switch Instruction Manual

Model: 30 Mins Time Switch

1. INTRODUCTION

This manual provides detailed instructions for the installation, operation, and maintenance of your LDEXIN 30-Minute Delay Timer Switch. This timer is designed for use in various electronic appliances such as microwave ovens, electric ovens, air fryers, and electric steamers, allowing for precise timing control up to 30 minutes. Please read this manual thoroughly before installation and use to ensure proper function and safety.

2. SAFETY INFORMATION

- Always disconnect power to the appliance before attempting any installation, maintenance, or repair.
- Installation should only be performed by qualified personnel or under strict supervision, following all local electrical codes and regulations.
- Ensure the timer's voltage and current ratings (AC 120V-15A, 250V-16A) are compatible with your appliance's requirements.
- Do not expose the timer to excessive moisture or extreme temperatures.
- Verify all connections are secure before restoring power.

3. PRODUCT OVERVIEW

The LDEXIN 30-Minute Delay Timer Switch is a compact, metal-constructed component designed for durability and high-temperature resistance. It features a round shaft for knob attachment and two electrical pins for connection.

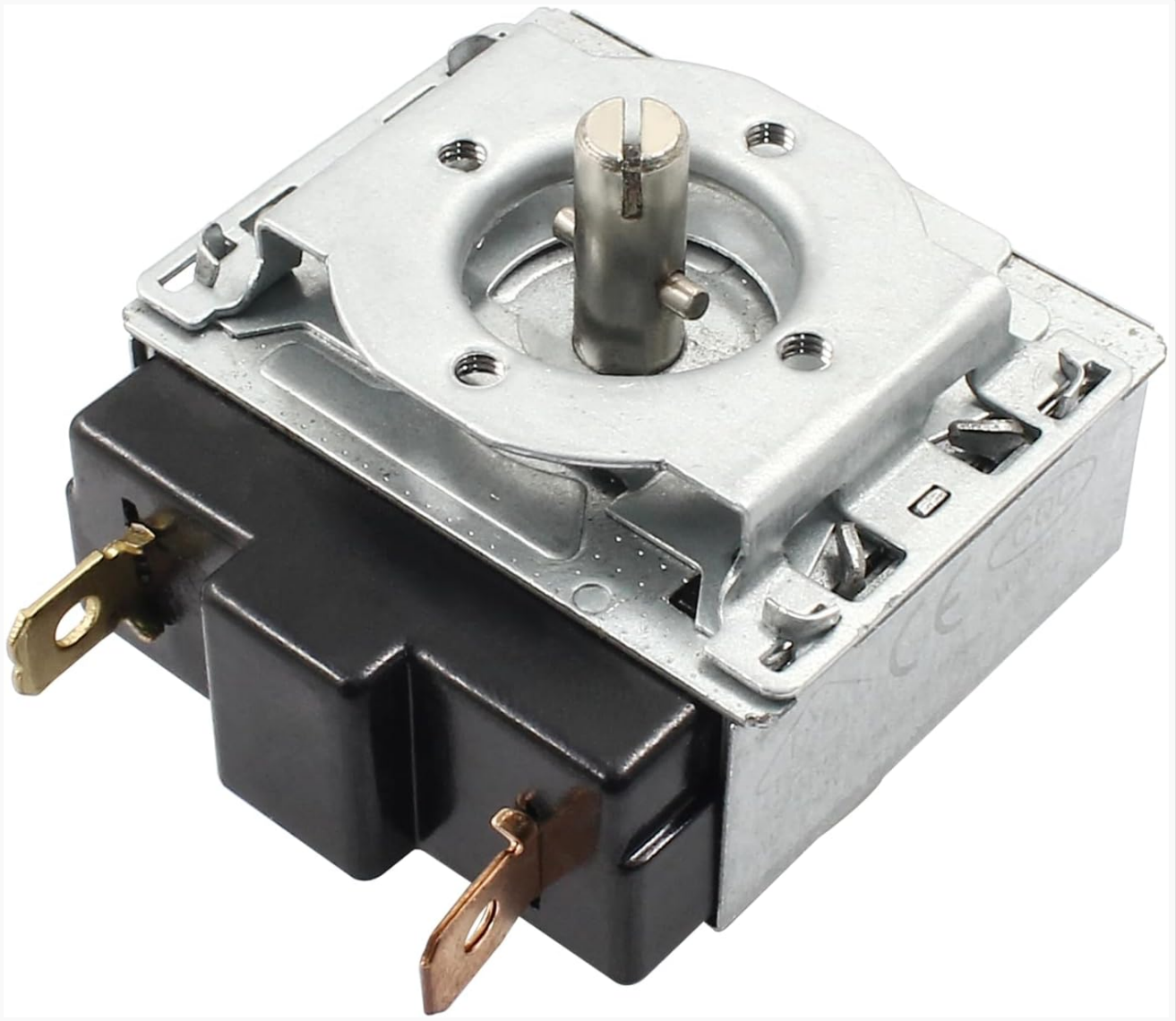


Figure 3.1: Top view of the LDEXIN 30-minute timer switch. This image shows the main body of the timer, constructed from metal, with a central round shaft designed for attaching a control knob. Two electrical terminals are visible on the side, encased in a black housing.

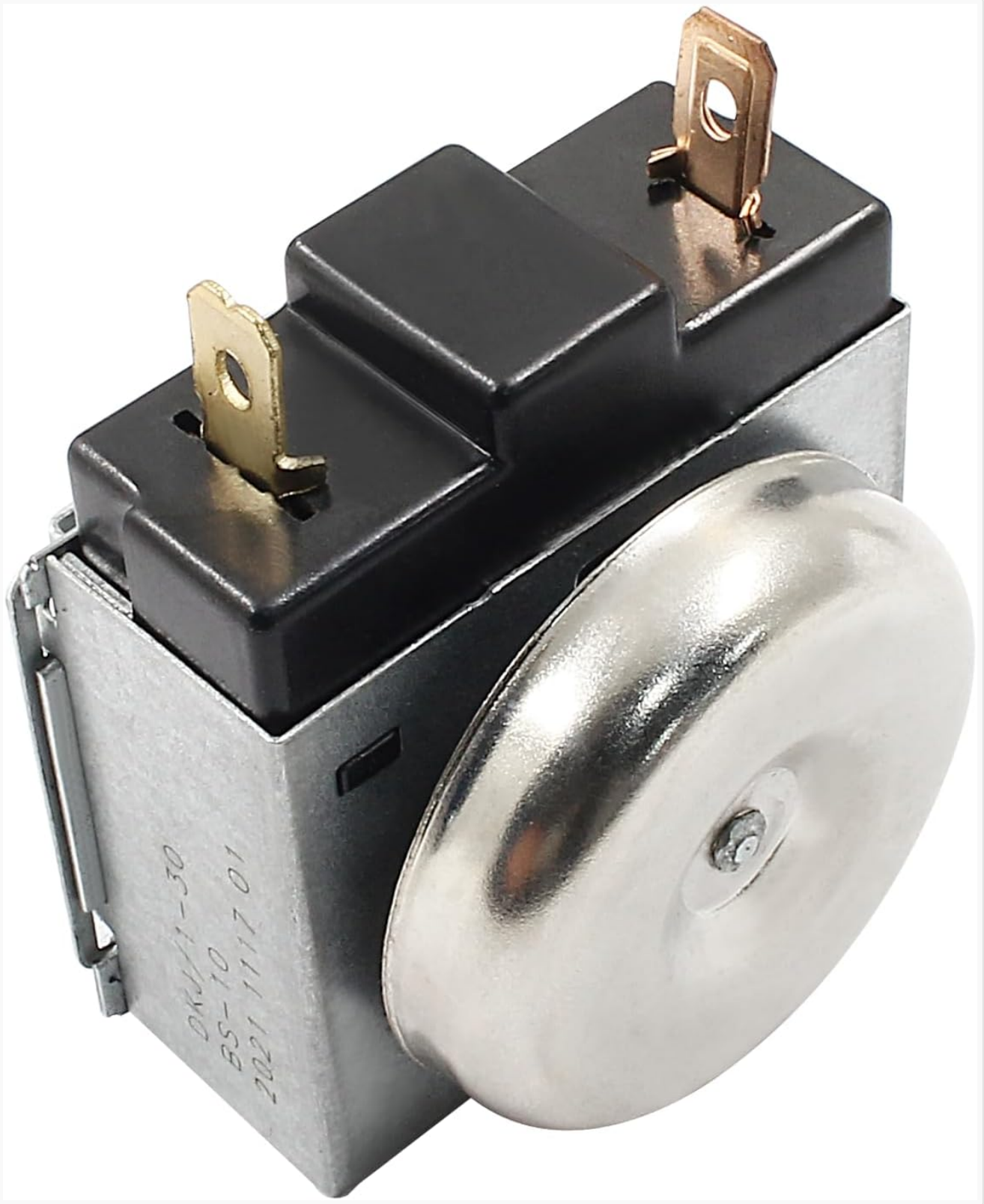


Figure 3.2: Side view of the timer switch. This perspective highlights the integrated bell mechanism on one side and the two electrical connection pins extending from the black housing on the other side. The metal casing of the timer is also clearly visible.

4. SPECIFICATIONS

Feature	Specification
Product Name	Delay Timer Switch
Model	30 Mins Time Switch

Material	Metal
Timing Range	1 to 30 minutes
Shaft Shape	Round-shape
Shaft Length	9mm / 0.35"
Shaft Diameter	6mm / 0.24"
Pin Number	2
Operating Voltage	AC 120V (15A), AC 250V (16A)
Color	Silver
Product Dimensions (approx.)	2.12"D x 1.7"W x 1.76"H (54mm x 43mm x 44.5mm)
Item Weight	2.82 ounces

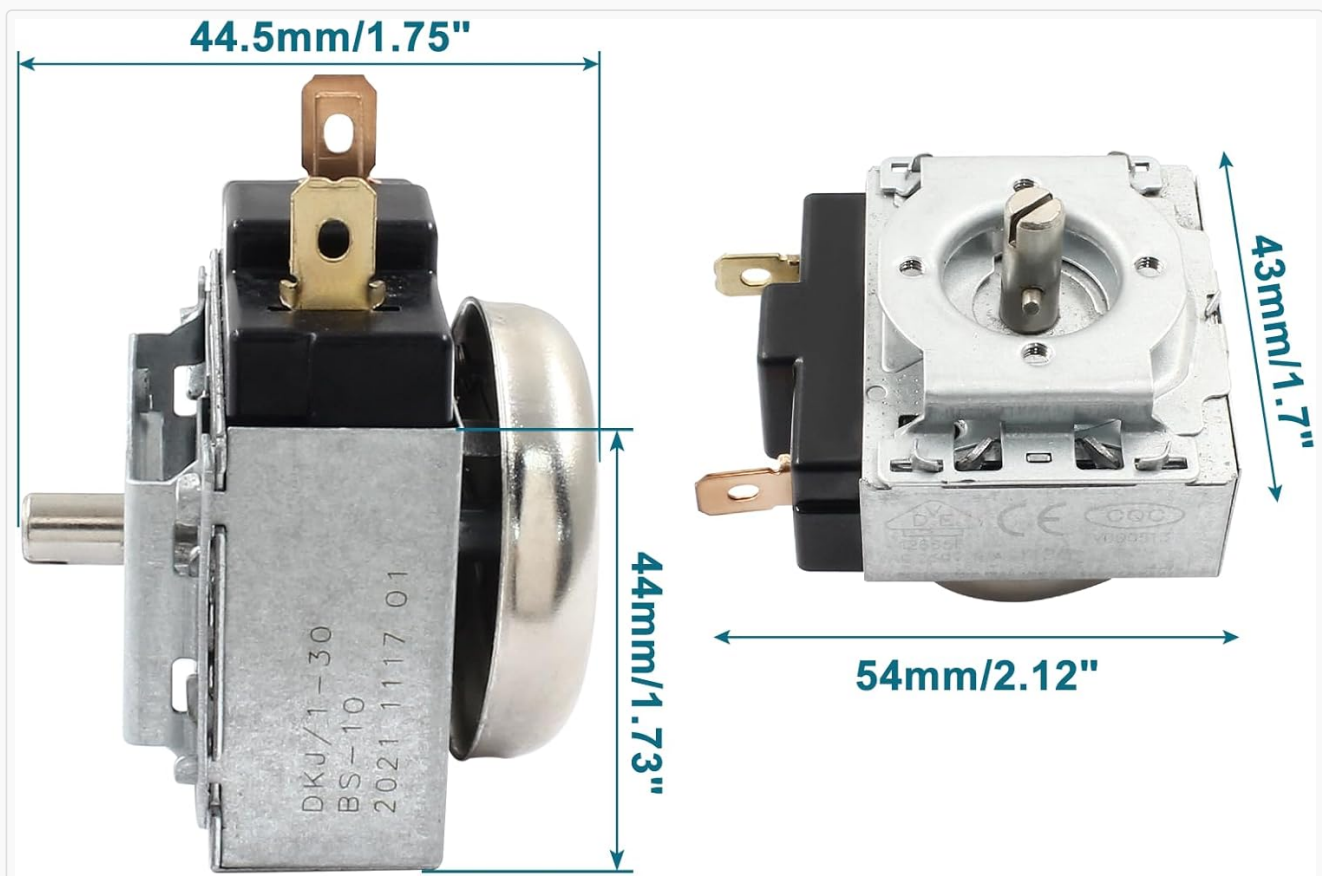


Figure 4.1: Dimensional drawing of the timer switch. This image provides key measurements for the timer, including its depth (54mm/2.12"), width (43mm/1.7"), and height (44.5mm/1.75"), crucial for ensuring compatibility with appliance housings.

5. SETUP AND INSTALLATION

This timer is intended as a replacement part or for integration into compatible appliances. The installation process typically involves electrical wiring and mechanical mounting.

- 1. Disconnect Power:** Before beginning, ensure the appliance is completely disconnected from its power source.
- 2. Access Timer Location:** Carefully open the appliance to access the existing timer or the designated mounting area for the new timer.

3. **Remove Old Timer (if applicable):** If replacing an old timer, note the wiring connections before disconnecting them. Take photos if necessary.
4. **Mount New Timer:** Secure the LDEXIN timer switch in the designated position. Ensure it is stable and properly aligned.
5. **Connect Wiring:** Connect the appliance's electrical wires to the two pins of the timer switch. Ensure connections are firm and correct according to the appliance's wiring diagram. Refer to the product overview images for pin location.
6. **Attach Knob:** Slide the control knob (not included) onto the round shaft of the timer.
7. **Secure Appliance:** Close and secure the appliance housing.
8. **Test:** Restore power to the appliance and test the timer's functionality.

Note: If you are unsure about any step, consult a qualified electrician or appliance repair technician.

6. OPERATING INSTRUCTIONS

The LDEXIN 30-Minute Delay Timer Switch operates mechanically to control the duration of an appliance's function.

1. **Set Time:** Rotate the control knob (attached to the round shaft) clockwise to the desired time setting, up to a maximum of 30 minutes.
2. **Timer Activation:** Once set, the timer will begin to count down. The appliance connected to the timer will operate during this period.
3. **Completion:** When the set time expires, the timer will automatically switch off the appliance and typically produce an audible bell sound to indicate completion.
4. **Manual Off:** To turn off the appliance before the timer completes its cycle, rotate the knob counter-clockwise to the "OFF" position, if available on your appliance's control knob.

7. MAINTENANCE

The LDEXIN 30-Minute Delay Timer Switch is designed for long-term reliability and requires minimal maintenance.

- **Cleaning:** If the timer itself requires cleaning, ensure the appliance is unplugged. Use a dry, soft cloth to wipe away dust or debris. Do not use liquid cleaners directly on the timer.
- **Inspection:** Periodically inspect the timer and its connections for any signs of wear, damage, or loose wiring. Address any issues promptly.
- **Environmental Conditions:** Ensure the timer is not exposed to conditions outside its operating parameters, such as excessive humidity or extreme temperatures, which could affect its lifespan.

8. TROUBLESHOOTING

Problem	Possible Cause	Solution
Timer does not activate appliance.	No power to appliance; faulty wiring; timer malfunction.	Check appliance power supply. Verify all wiring connections are secure. If power and wiring are correct, the timer may need replacement.
Timer does not count down.	Timer mechanism stuck or damaged.	Ensure the knob rotates freely. If the mechanism is jammed, the timer may require replacement.

Timer counts down but does not switch off.	Internal contact failure; bell mechanism issue.	The timer's internal switching mechanism may be faulty. Replacement is likely necessary.
Timer bell does not sound.	Bell mechanism damaged or obstructed.	This typically does not affect the timer's primary function of switching power. If the bell is critical, the timer may need replacement.

Warning: Always disconnect power before inspecting or attempting to fix any issues. If you are not comfortable performing electrical repairs, seek professional assistance.

9. WARRANTY AND SUPPORT

For warranty information or technical support regarding your LDEXIN 30-Minute Delay Timer Switch, please refer to the documentation provided with your original appliance or contact the manufacturer directly. Keep your purchase receipt as proof of purchase.

