

## Ulike UI20 RE

# Ulike Laser Hair Removal Air 10 IPL Instruction Manual

Model: UI20 RE | Brand: Ulike

## 1. INTRODUCTION

Welcome to the Ulike Air 10 IPL Hair Removal Device instruction manual. This device utilizes advanced IPL technology to provide a nearly painless, effective, and long-lasting hair removal solution from the comfort of your home. Please read this manual thoroughly before first use to ensure safe and optimal operation.

## 2. SAFETY INFORMATION

**WARNING: Before using the device, please read the user manual carefully, including all contraindications, warnings, and safety information.**

IPL technology is not suitable for everyone and every body part. Please refer to the skin tone chart in the Operating section before usage.

- Avoid usage while pregnant or breastfeeding.
- Not suitable for tattooed and over-tanned skin, wounded areas.
- Do not use on areas with moles, freckles, or beauty marks without consulting a professional.
- Always wear the provided safety glasses during operation.

## 3. PACKAGE CONTENTS

Verify that all items are present in the package:

- Ulike Air 10 IPL Hair Removal Device
- Power Adapter and Cord
- Safety Glasses
- Razor
- User Manual
- Storage Bag



Image: Complete Ulike Air 10 IPL package contents including the device, safety glasses, razor, and packaging.

## 4. PRODUCT OVERVIEW

The Ulike Air 10 features advanced technologies for effective and comfortable hair removal:

- **Sapphire Ice-Cooling Technology:** Retains a contact temperature below 65°F for nearly painless and skin-safe treatment.
- **Dual Lights:** Two lamps cover an 18% wider treatment area and emit double flashes for faster full-body sessions.
- **SHR Mode\*:** Salon-inspired mode with 26J energy output per 4-pulse burst, effective for stubborn hairs.
- **SkinSensor Technology:** Detects skin tones, auto-adjusts power, and stops flashing if the area is too dark for safe application.

# Fast Effectiveness With Dual Lights

2x the light source for faster,  
more effective hair removal results.

## 0.6 Inch

Larger treatment area.

## 26J

Higher Energy Output



Image: Detail of the Ulike Air 10's dual light source for enhanced effectiveness.

# Nearly Painless Hair Removal with Ice-cooling Technology

Retains contact temperature below  
65°F\* to avoid skin burning or irritation.



Image: The device's sapphire ice-cooling feature ensures a comfortable, nearly painless experience.

## 5. SETUP

1. **Prepare Skin:** Before treatment, ensure the target area is clean, dry, and free of any gels or creams. Shave all visible hair using the provided razor or your preferred method.

### Step 1

Use the included razors to shave the visible hair you want to treat.



Image: Step 1: Use the included razor to shave the visible hair you want to treat.



2. **Connect Power:** Plug the power adapter into the device and then into a power outlet.



Image: Step 2: Plug-in the Device - Connect your device to power to start treatment.

3. **Wear Safety Glasses:** Put on the provided safety glasses to protect your eyes from the intense pulsed light.

## 6. OPERATING INSTRUCTIONS

---

### 6.1 Skin Tone and Hair Color Suitability

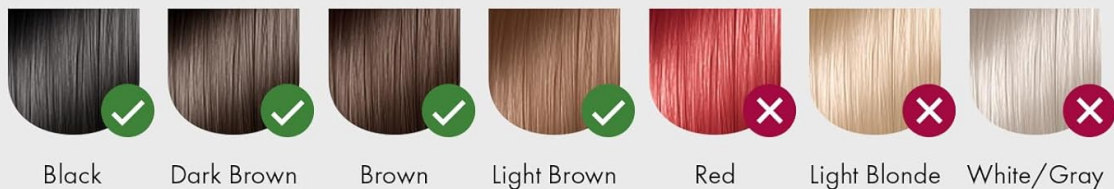
The effectiveness of IPL depends on your skin tone and hair color. Refer to the chart below to determine if Ulike Air 10 is suitable for you.

# Is Air 10 Right for My Skin?

## Step 1 Identify Your Skin Tone



## Step 2 Identify the Color of Your Unwanted Hair



✓ Skin Tone + ✓ Hair Color = Applicable

Either Skin Tone or Hair Color ✗ = Not Applicable



Image: Chart indicating suitable skin tones and hair colors for Ulike Air 10 IPL treatment.

## 6.2 Powering On and Mode Selection

1. **Power On:** Short press the power button to turn on the device. The fan will start automatically, and the sapphire ice-cooling will activate.
2. **Select Intensity/Mode:** Short press the power button repeatedly to cycle through the intensity levels (Fast, Normal, High) and SHR Mode.

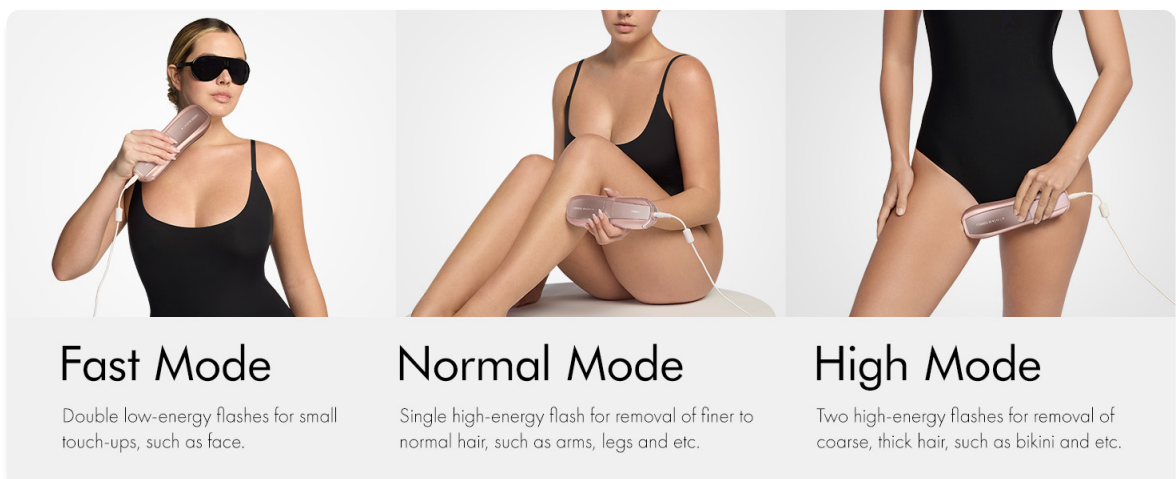


Image: Visual representation of the different intensity modes: Fast, Normal, and High.

3. **Treatment Application:** Place the device window firmly against the skin at a 90-degree angle. The device will not flash if there is not full contact.

### 6.3 Usage Modes

- **Manual Mode:** Press the treatment button (usually on the back/side) to emit a single light pulse. This is ideal for small, precise areas.
- **Auto-Glide Mode:** Hold down the treatment button. The device will automatically emit light pulses at regular intervals as you glide it across the skin. This is suitable for larger areas.

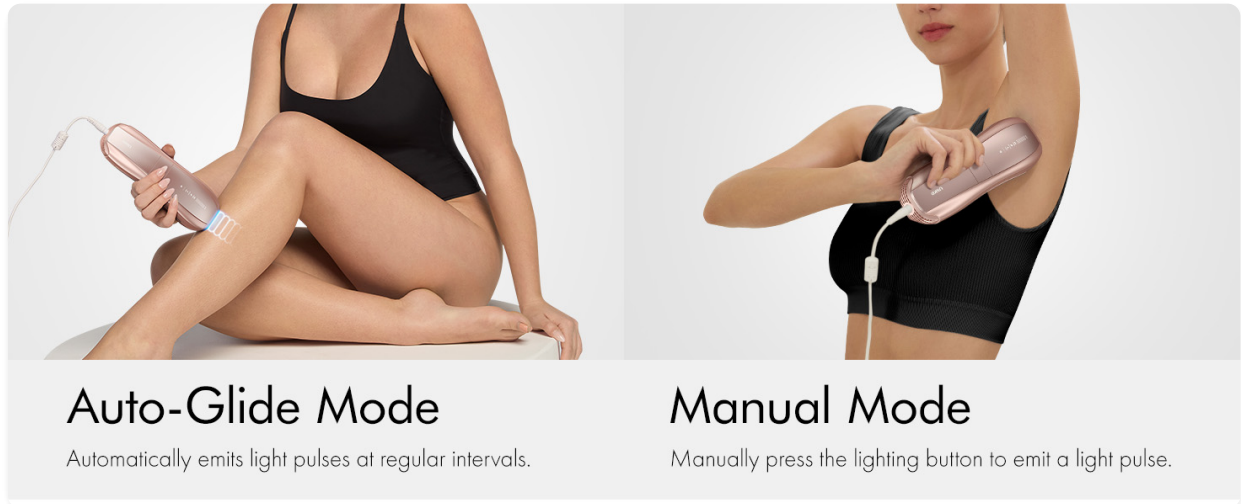


Image: Illustration of Auto-Glide mode for continuous flashing and Manual mode for single flashes.

### 6.4 Treatment Schedule

For visible results in just 2 weeks, use consistently every two days for the first two weeks.

- **First Treatment Session (Weeks 1-4):** Treat three times per week.
- **Maintenance Session:** Treat once or twice per month for long-lasting hair removal results.

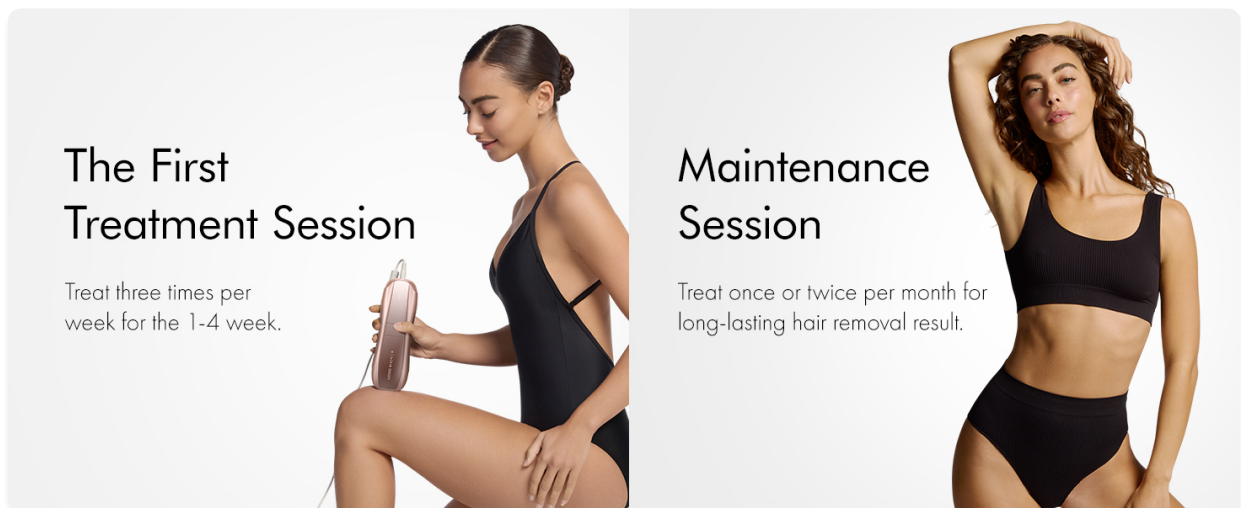


Image: Recommended treatment schedule for initial hair reduction and ongoing maintenance.

Video: Official Ulike video demonstrating the device's use for summer readiness.

## 7. MAINTENANCE

- **Cleaning:** After each use, wipe the device window with a soft, dry cloth. Do not use abrasive cleaners or immerse the device in water.

- **Storage:** Store the device in its original packaging or the provided storage bag in a cool, dry place away from direct sunlight.

## 8. TROUBLESHOOTING

Problem	Possible Cause	Solution
Device not turning on	Not properly plugged in; Power button not pressed correctly.	Ensure power cord is securely connected to device and outlet. Short press power button.
Light not flashing	Device not making full skin contact; Skin tone too dark; Hair not shaved.	Ensure full 90-degree contact with skin. Check skin tone suitability. Shave hair completely.
Discomfort/Pain during use	Intensity level too high; Skin not properly prepared.	Reduce intensity level. Ensure skin is clean and dry, no gels/creams.

## 9. SPECIFICATIONS

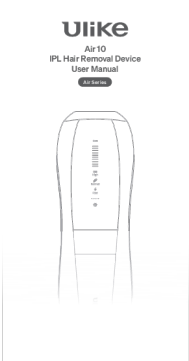
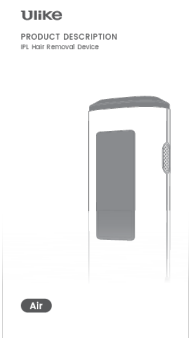


- **Model Number:** UI20 RE
- **Product Dimensions:** 8.2 x 2.2 x 2.8 inches
- **Item Weight:** 14.4 ounces (0.9 Pounds)
- **Color:** Pink
- **Manufacturer:** Shenzhen Ulike Smart Electronics Co.,Ltd
- **Country of Origin:** China
- **Recommended Uses:** Armpits, Legs, Arms, Bikini Line, Face



## 10. WARRANTY & SUPPORT

For warranty information, technical support, or customer service inquiries, please refer to the contact details provided in your product packaging or visit the official Ulike website.

Ulike offers a 100-Day Risk-Free Trial for their products. Please check their official website for full terms and conditions.



 <p>The image shows the cover of the Ulike Air 10 IPL Hair Removal Device User Manual. It features the Ulike logo at the top, followed by 'Air 10', 'IPL Hair Removal Device', and 'User Manual'. Below the text is a line drawing of the device. At the bottom, there is a small 'Air series' badge.</p>	<p><a href="#">Ulike Air 10 IPL Hair Removal Device User Manual</a></p> <p>This user manual provides comprehensive instructions and safety information for the Ulike Air 10 IPL Hair Removal Device, covering operation, maintenance, troubleshooting, and technical specifications for effective and safe at-home hair removal.</p>
 <p>The image shows the cover of the Ulike Air IPL Hair Removal Device: User Manual, Safety, and How-To Guide. It features the Ulike logo at the top, followed by 'PRODUCT DESCRIPTION' and 'IPL Hair Removal Device'. Below the text is a line drawing of the device. At the bottom, there is a small 'Air' badge.</p>	<p><a href="#">Ulike Air IPL Hair Removal Device: User Manual, Safety, and How-To Guide</a></p> <p>Comprehensive guide to the Ulike Air IPL Hair Removal Device, covering safety precautions, usage instructions, suitability, maintenance, and troubleshooting for effective and safe hair removal.</p>
 <p>The image shows the cover of the Ulike Air 10 IPL Hair Removal Device User Manual. It features the Ulike logo at the top, followed by 'Air 10', 'IPL Hair Removal Device', and 'User Manual'. Below the text is a line drawing of the device. At the bottom, there is a small 'Air series' badge.</p>	<p><a href="#">Ulike Air 10 IPL Hair Removal Device User Manual</a></p> <p>Explore the Ulike Air 10 IPL Hair Removal Device with this comprehensive user manual. Learn about its features, operation, safety precautions, and how to achieve smooth, pain-free hair removal at home.</p>
 <p>The image shows the cover of the Ulike Air+ IPL Hair Removal Device Quick Start Guide with Sapphire Ice-Cooling. It features the Ulike logo at the top, followed by 'QUICK START GUIDE' and 'IPL Hair Removal Device'. Below the text is a line drawing of the device. At the bottom, there is a small 'Air series' badge and a text block: '90-Day Hassle-Free Return', '2-Year Warranty', 'amazon.com/ulike', and 'ulike.com'.</p>	<p><a href="#">Ulike Air+ IPL Hair Removal Device Quick Start Guide with Sapphire Ice-Cooling</a></p> <p>Comprehensive quick start guide for the Ulike Air+ IPL Hair Removal Device. Learn about its Sapphire Ice-Cooling technology, device features, step-by-step usage instructions, energy level settings, and answers to frequently asked questions for safe and effective hair removal.</p>

 The image shows the front cover of the Ulike IPL Hair Removal Device Quick Start Guide. At the top, the Ulike logo is displayed in a bold, sans-serif font. Below the logo, the text 'QUICK START GUIDE' is written in a smaller, all-caps font. Underneath that, 'IPL Hair Removal Device' is written in an even smaller font. A promotional banner in the middle of the cover states '90-Day Hassle-Free Return', '2-Year Warranty', and 'email: ussupport@ulike.com'. The central part of the cover features a large, stylized illustration of the Ulike IPL device, which is a rectangular, light-colored handheld unit with a circular applicator head. At the bottom of the cover, the tagline 'The hair removal options i like' is printed in a small, italicized font.	<p><a href="#">Ulike IPL Hair Removal Device Quick Start Guide</a></p> <p>Comprehensive guide to using the Ulike IPL Hair Removal Device, detailing product features, step-by-step instructions, safety warnings, and expected results for effective hair removal.</p>
 This image is identical to the one in the first row, showing the front cover of the Ulike IPL Hair Removal Device Quick Start Guide. It includes the Ulike logo, 'QUICK START GUIDE' title, 'IPL Hair Removal Device' subtitle, a 90-day hassle-free return and 2-year warranty banner, a central illustration of the device, and the 'The hair removal options i like' tagline at the bottom.	<p><a href="#">Ulike IPL Hair Removal Device Quick Start Guide</a></p> <p>A quick start guide for the Ulike IPL Hair Removal Device, detailing its features, usage instructions, and safety precautions. Learn about the patented Sapphire Ice-cooling technology and how to achieve optimal results.</p>