

## Manuals+

[Q & A](#) | [Deep Search](#) | [Upload](#)

manuals.plus /

› [SHLAND](#) /

› [SHLAND 9 Inch High Profile Full Box Spring Instruction Manual](#)

## SHLAND Full Box Springs 9 Inch

# SHLAND 9 Inch High Profile Full Box Spring Instruction Manual

Brand: SHLAND | Model: Full Box Springs 9 Inch

## 1. INTRODUCTION

---

This manual provides comprehensive instructions for the assembly, usage, and maintenance of your SHLAND 9 Inch High Profile Full Box Spring. Please read all instructions carefully before beginning assembly and retain this manual for future reference.

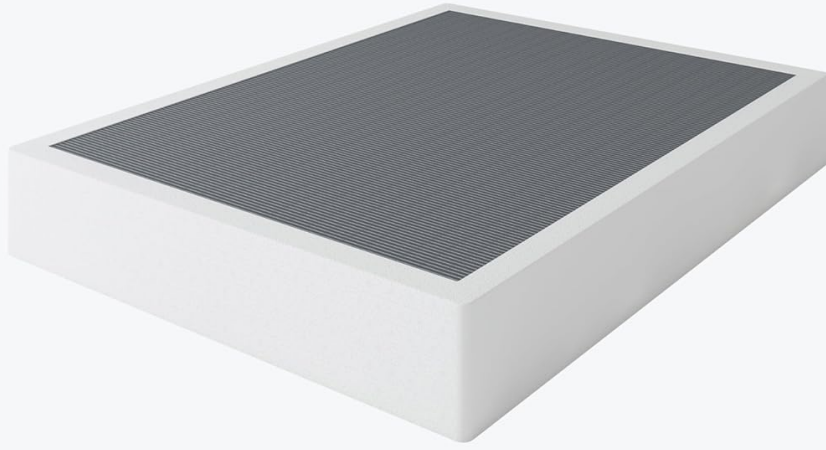


Image: The SHLAND 9 Inch High Profile Full Box Spring, displaying both the assembled metal frame and the frame with its fabric cover.

## 2. SAFETY INFORMATION

---

- Exercise caution around potential sharp edges and pinch points during assembly and handling.
- Ensure all bolts are securely tightened to prevent instability.
- Do not exceed the maximum weight capacity of 3000 lbs.

## 3. PACKAGE CONTENTS

---

Verify that all components are present before beginning assembly:

- Metal Frame Sections
- Metal Slats
- Fabric Cover with Elastic Band
- Assembly Hardware (bolts, washers)
- Allen Key (for tightening bolts)
- Instruction Manual



Image: The metal frame components laid out before assembly.

## 4. SETUP AND ASSEMBLY

---

Follow these steps for quick and easy assembly. All necessary tools are included.

1. **Unpack Components:** Carefully remove all parts from the packaging. Lay them out on a clean, soft surface to prevent scratches.

2. **Assemble Frame Sides:** Connect the long side rails to the short end rails using the provided bolts and the Allen key. Ensure all connections are snug but do not fully tighten yet.
3. **Attach Center Support:** Secure the center support bar(s) to the frame. These typically run down the middle of the frame and provide additional stability.
4. **Insert Slats:** Place the metal slats into the designated slots on the frame. Ensure they are evenly spaced and firmly seated.
5. **Final Tightening:** Once all frame components and slats are in place, go back and securely tighten all bolts. This ensures maximum stability and prevents squeaking.
6. **Apply Fabric Cover:** Drape the fabric cover over the assembled metal frame. The elastic band and corner design will help it fit snugly and prevent slipping.



Image: The metal frame with the fabric cover partially applied, demonstrating the assembly process.

## 5. USAGE

The SHLAND 9 Inch High Profile Full Box Spring is designed to provide robust support for various mattress types, including innerspring, memory foam, and latex mattresses. Its 9-inch height elevates your mattress to a comfortable level.

- **Mattress Compatibility:** Suitable for full bed frames and a wide range of mattress types.
- **Weight Capacity:** Engineered to support up to 3000 lbs, ensuring long-lasting durability.
- **Placement:** Position the box spring on a compatible bed frame. The fabric cover helps prevent the mattress from slipping.



Image: An illustration demonstrating the correct layering of a mattress on top of the box spring, which then rests on a bed frame.

## 6. MAINTENANCE

- **Fabric Cover Care:** The included fabric cover is removable for spot cleaning. For deeper cleaning, follow the care instructions on the cover's label.
- **Frame Inspection:** Periodically check all bolts and connections to ensure they remain tight. Re-tighten if

necessary to maintain stability and prevent noise.

- **Cleaning the Frame:** Wipe the metal frame with a damp cloth as needed. Avoid harsh chemicals that may damage the finish.

## 7. TROUBLESHOOTING

- **Squeaking Noise:** If the box spring makes noise, check all bolts and ensure they are fully tightened. Loose connections are a common cause of squeaking.
- **Instability/Wobbling:** Ensure the box spring is placed on a flat, even surface. Verify that all frame sections are correctly assembled and all bolts are tight.
- **Mattress Slipping:** The fabric cover is designed to minimize mattress movement. Ensure the cover is properly fitted and snug around the frame.

## 8. SPECIFICATIONS

Feature	Detail
Item Weight	28 pounds
Product Dimensions	74.6 x 53.6 x 9 inches
Size	Full
Color	9 Inch
Brand	SHLAND
Assembly Required	Yes
Max Weight Capacity	3000 lbs

## Full Box Spring

Please Note: Please check measurements of third-party brand Full Size Bed before pairing with this 9 inch box spring full, as it is important to ensure compatibility

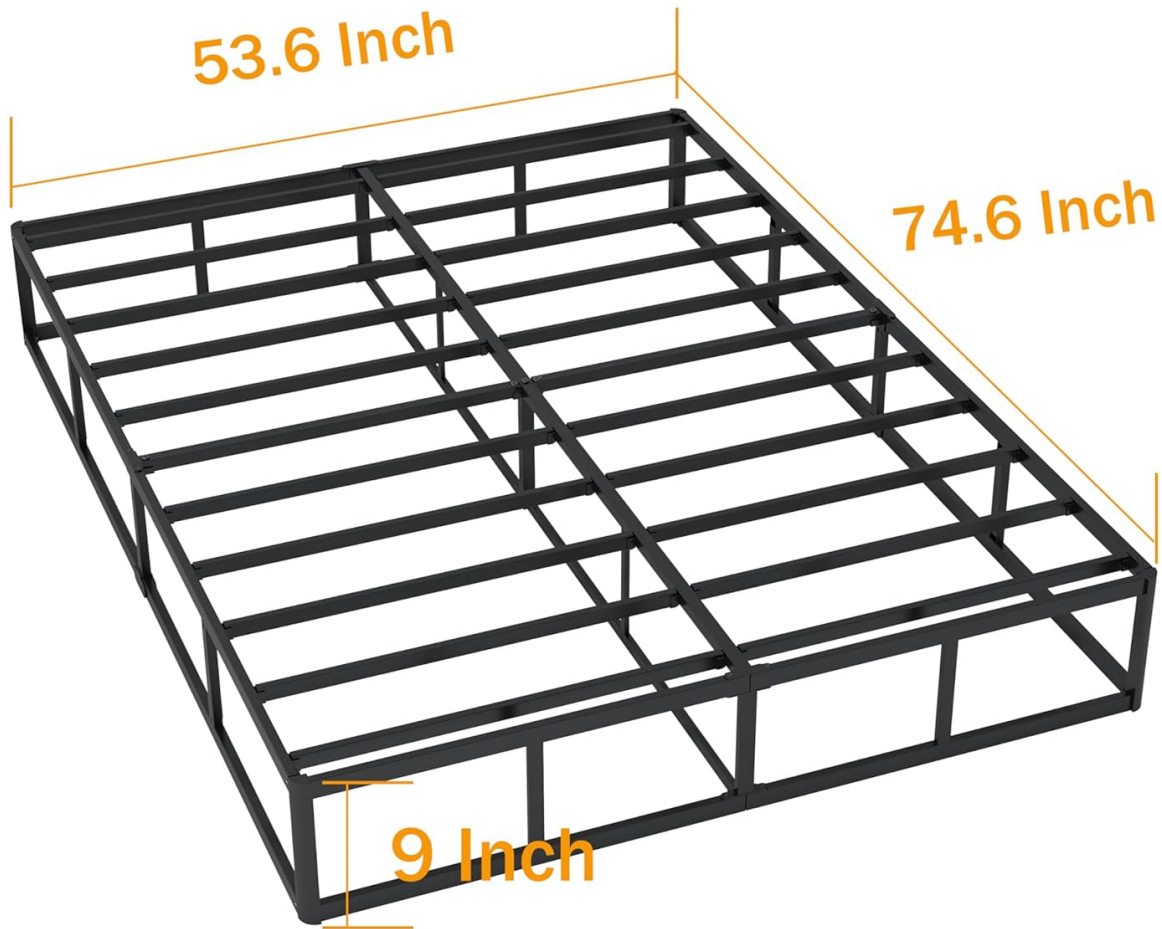


Image: A visual representation of the box spring frame with its key dimensions (length, width, height) labeled.

## 9. WARRANTY AND SUPPORT

For specific warranty details and customer support, please refer to the information provided with your purchase or contact SHLAND directly through their official channels.